



PRESBYTERIAN HIGH SCHOOL

2023 END-OF-YEAR EXAMINATION
SECONDARY THREE EXPRESS
HUMANITIES (GEOGRAPHY)
(2260/2)

Name: _____ ()

Duration: 1 hour 45 minutes

Class: Sec 3 _____

Date: 6 October 2023

Additional material: Insert

READ THESE INSTRUCTIONS FIRST:

Write in dark blue or black pen in the spaces provided.
You may use a pencil for any diagrams and graphs.
Do not use staples, paper clips, glue or correction fluid.

Answer Question 1 **and** Question 2.

Candidates should support their answers with the use of relevant examples.
Sketch maps and diagrams should be drawn whenever they serve to illustrate an answer.

The Insert contains additional resources referred to in the questions.

The number of marks is given in the brackets [] at the end of each question or part question.

For Examiner's Use	
Question 1	20
Question 2	30
Total	50

Setter: Ms Michelle Tang

Vetter: Mdm Filzah

This document consists of **14** printed pages and **1** Insert.

Answer Question 1

1 Geography in Everyday Life

- (a) Study Fig. 1.1 (Insert), which shows a poster of some animals that commonly cross the Eco-Link@BKE, an ecological bridge that spans the Bukit Timah Expressway. The bridge connects Bukit Timah Nature Reserve to the Central Catchment Nature Reserve.

With reference to Fig. 1.1, explain how this bridge will mutually benefit people and wildlife. **[4]**

- (b) Study Fig. 1.2 (Insert), showing a dragon playground in Toa Payoh, Singapore.

With reference to Fig. 1.2, describe how residents acquire a sense of place in this neighbourhood. **[2]**

- (c) Study Fig. 1.3, which shows an extract about a social enterprise, Edible Garden City, in Singapore.



sharing our expertise with fellow passionate individuals.

Our farm in Queenstown is the perfect playground for outdoor exploration and learning, for everyone from young to adults and elderly!

Fig. 1.3

With reference to Fig. 1.3, describe how Edible Garden City is a form of [3]
environmental stewardship.

- (d) Study Fig. 1.4 (Insert), which shows a poster of an Emergency

Preparedness Day in Macpherson organized by the People's Association in Singapore.

With reference to Fig. 1.4, explain how community resilience is developed through an Emergency Preparedness Day. **[3]**

- (e)** A group of Singapore students was investigating the popularity of neighbourhood parks in Singapore. As part of their investigation, they decided to find out how frequently visitors visit Bishan-Ang Mo Kio Park.

They decided to interview 20 visitors using a questionnaire survey on a Sunday evening. Study Fig. 1.5 (Insert), which shows the site where the students collected their data.

- (i)** Suggest a suitable closed-ended question for their questionnaire survey. **[1]**

- (ii)** Identify the type of data collected in **(e)(i)**. **[1]**

- (iii)** The students used a dice to select the respondents for the questionnaire survey. Identify this sampling method. **[1]**

- (iv)** State an advantage of the sampling method identified in **(e)(iii)**. **[1]**

)

- (v) With reference to Fig. 1.5, describe the potential risks in this fieldwork. [2]

- (vi) Suggest measures that can be implemented to mitigate the risks mentioned in (e)(v). [2]

[Total: 20]

Answer Question 2

2 Climate

Study Fig. 2.1, which shows a climograph for Kolkata, India.

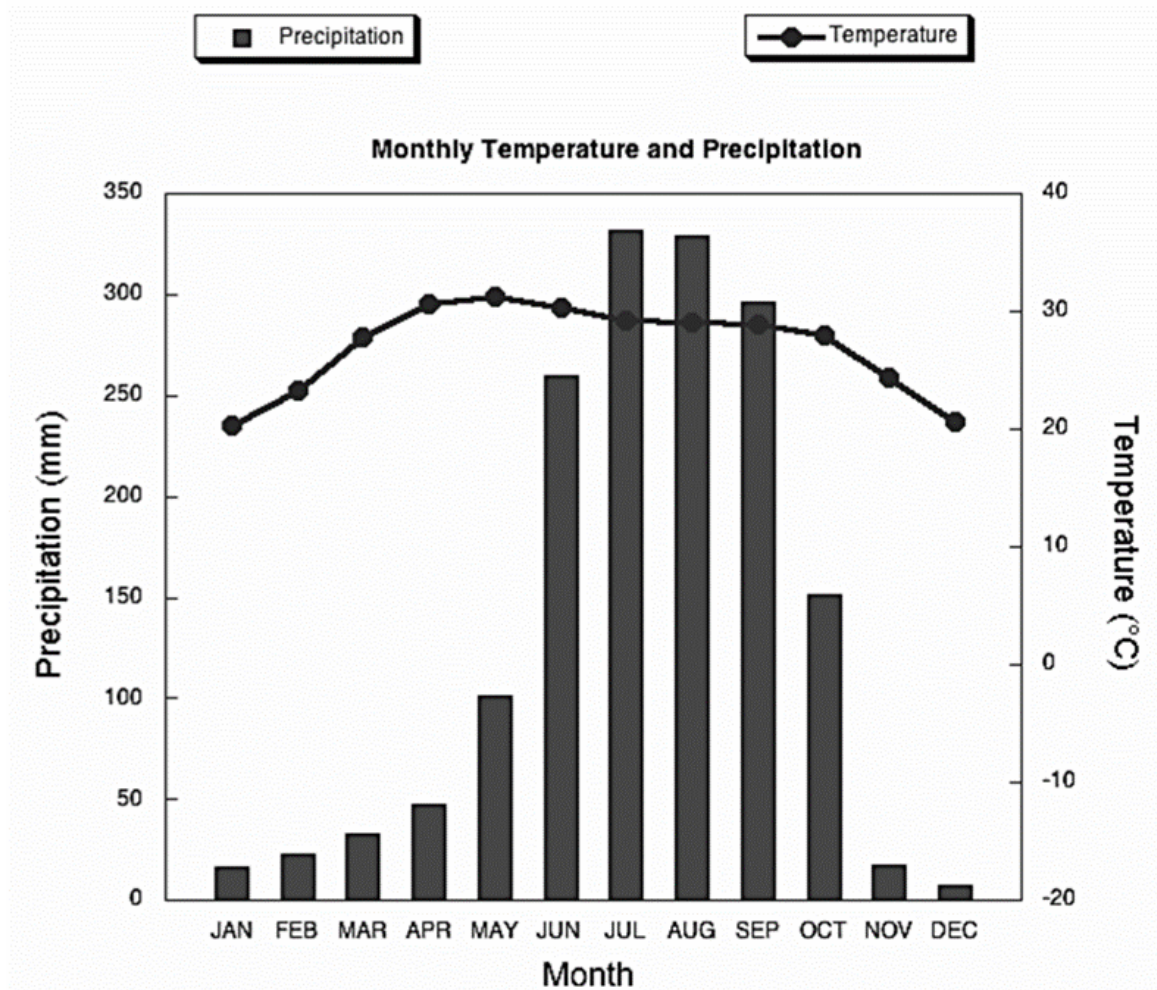


Fig. 2.1

- (a) (i) Using Fig. 2.1, describe the climate of Kolkata, India.

[4]

(ii) Explain Kolkata's rainfall pattern from June to September. [4]

(b) Annotate Fig. 2.2 to explain how relief rain is formed. [5]

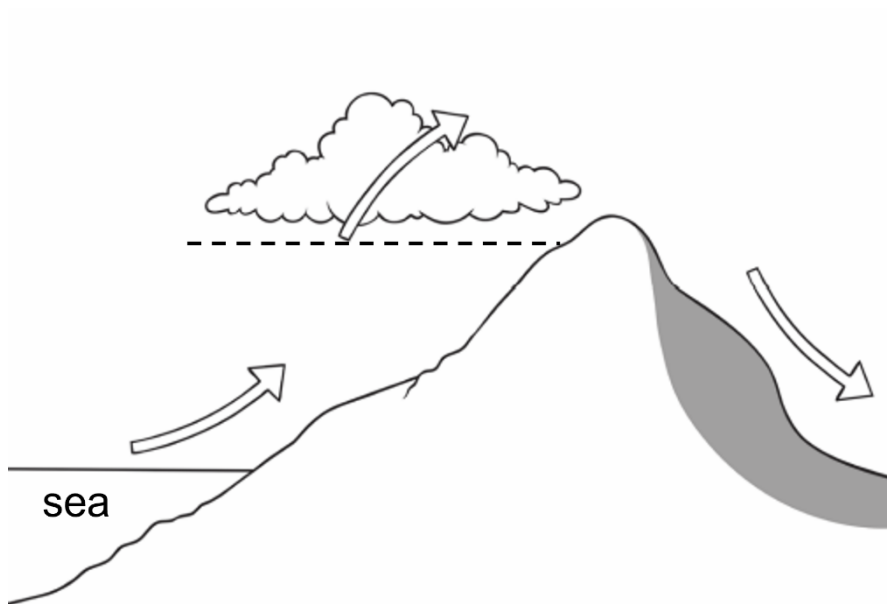


Fig. 2.2

(c) Study Fig. 2.3 (Insert), which shows the changes in the average global temperature and atmospheric carbon dioxide concentration from 1880 to 2014.

(i) Using Fig. 2.3, describe the general changes in the average global temperature and atmospheric carbon dioxide concentration from 1880 to 2014. **[4]**

(ii) Suggest one anthropogenic factor that has led to the general change in carbon dioxide concentration. **[1]**

- (d) Study Fig. 2.4, which shows how wind directions in a coastal area change between day and night.

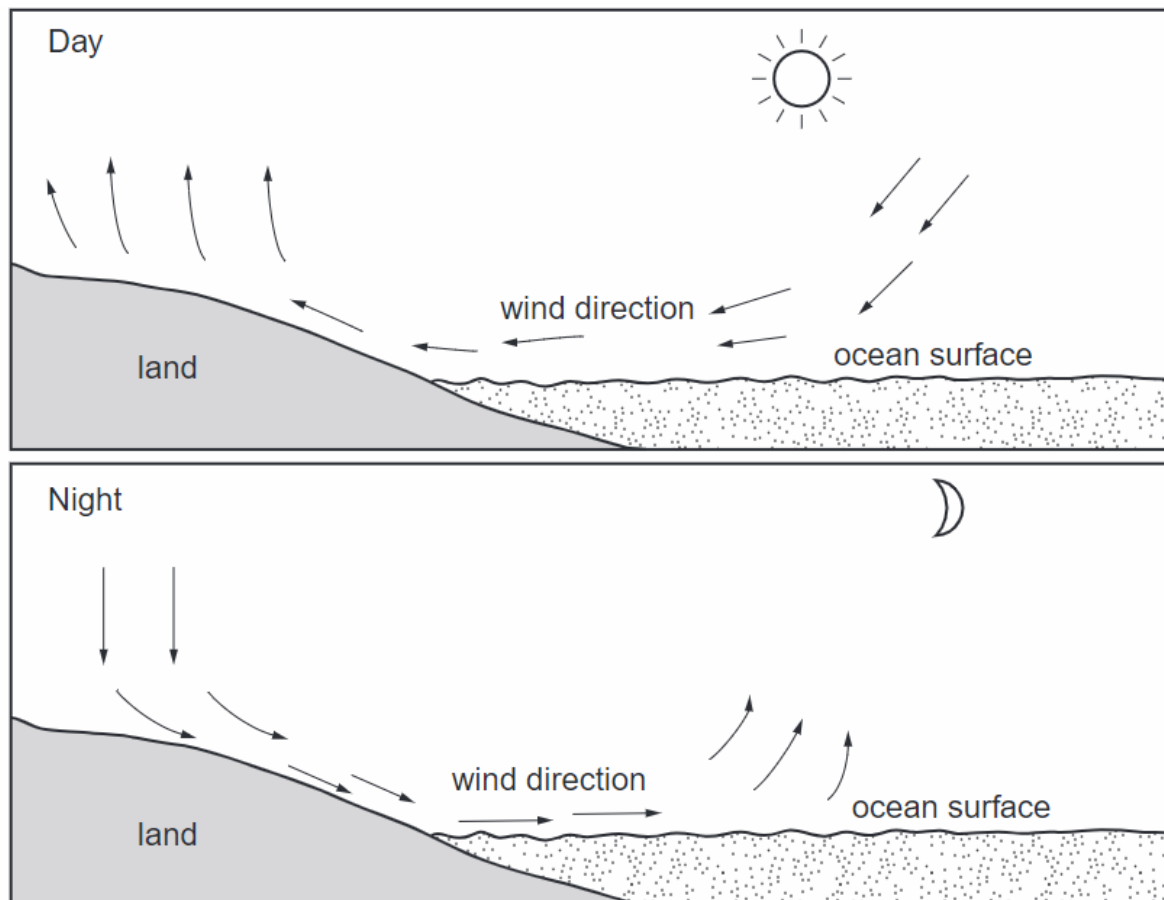


Fig. 2.4

- (i) Identify the types of winds in A and B. [1]

A: _____

B: _____

- (ii) Outline the reasons for the changes in wind direction between day and night as shown in Fig. 2.4. [2]

- (e) 'Latitude is a more significant factor than altitude in causing air temperature variations across Earth's surface.' [9]

To what extent do you agree with this statement? Explain your answer.

[illegible]

[illegible]

[illegible]

[Total: 30]

Additional Pages

[illegible]

This image shows a blank sheet of white paper with horizontal ruling lines. The lines are evenly spaced and run across the width of the page. There are no margins, text, or other markings on the paper.

Additional Pages

If you use the following lined pages to complete the answer(s) to any question(s), the question numbers(s) must be clearly shown.

[illegible]

[illegible]

END OF PAPER