

**TAMPINES JUNIOR COLLEGE
JC2 PRELIMINARY EXAMINATIONS 2008**

**GEOGRAPHY
Higher 2
19 August 2008**

9730/02



READ THESE INSTRUCTIONS

Section A

Answer all questions

Section B

Answer two questions , each from different topic

At the end of the examination, fasten all your work securely together.

The number of marks is given in brackets () at the en of each question or part question.

The Inserts contain all the Figures/Diagrams to in the question paper in Section A.

Diagrams and sketch maps should be drawn whenever they serve to illustrate an answer.

You are reminded of the need for good English and clear presentation in your answers.

Write all questions attempted on the cover page provided.

Do not forget to write your name and class on the cover page.

Fasten all your answer scripts securely.

Section A

Answer all the questions in this section.

Questions 1, 2 and 3 carry 12 marks and Question 4 carries 14 marks.

You should allocate your time accordingly.

The Globalization of Economic Activity

1. Study the cartoon shown in Figure 1 and answer the followings:

- (a) What does the picture in the cartoon in Figure 1 implies? (2)
- (b) Suggest reasons for such situation as depicted in Figure 1. (4).
- (c) Discuss the impact of globalization on the world economy. (6)

Population Issues and Challenges.

2. Figure 2 describe the total number of foreign migrants in European Union.

- (a) Describe the volume of foreign migrants in EU as shown. (2)
- (b) Account for the influx of foreign migrants to EU as shown in the Figure. (4)
- (c) Discuss the results of such migratory flow both to the receiving and sending regions (6)

Urban Issues and Challenges

3. Figure 3 shows the trends of proportion of urban and rural population in EMDCs and LEDCS over the years.

- (a) Describe the relative growth of urban and rural population in both contrasting regions as shown in Figure 3. (2)
- (b) What do you understand by the term urban growth and urbanization? (4)
- (c) Assess for the rapid increase in urban population in the Third World Regions. (6)

The Globalization of Economic Activity/Population Issues and Challenges

4. Figure 4 shows the volume of trade in UK and other regions.

- (a) Describe the volume of trade as shown in Figure 4. (2)
- (b) Name a diagrammatic techniques used in the Figure. (1)
- (c) Suggest reasons why such diagrammatic techniques is used in Figure 4. (3)
- (d) Discuss the roles of EU and NAFTA in regional trade blocks. (8)

Section B

Answer two questions, each from a different topic. All questions carry 25 marks.

The Globalization of Economic Activity

5 EITHER

(a) With reference to examples, explain what you understand by the 'globalization of economic activity' (9)

(b) Discuss the causes and impact of the emergence of the new international division of labor on the global economic activities. (16)

OR

(a) Analyze the impact of Transnational Companies to the economies of country or regions in which they operate. (9)

(b) Globalization of the world economy has led to the uneven development in many parts of the world. Assess this statement with reference to examples that you have studied. (16)

Population Issues and Challenges

6 EITHER

(a) Discuss the values and limitations of population pyramids in predicting population change. (9)

(b) With reference to specific examples, assess the economic and social implications of changes in the population structure of a country. (16)

OR

(a) Discuss the relationship between population growth and resource utilization (9)

(b) Discuss the links between Demographic Transition Theory and age Structure (16)

Urban Issues and Challenges

7 EITHER

(a) Evaluate the economic, social and environmental consequences of decentralization. (9)

(b) With reference to examples from any cities, assess to what extent historical factors determine urban structure of cities. (16)

OR

(a) Discuss the nature and causes of inner city decline (9)

(b) With reference to examples that you have studied, assess the success of the re-imagining of cities. (16)

INSERTS FOR DATA RESPONSE QUESTIONS

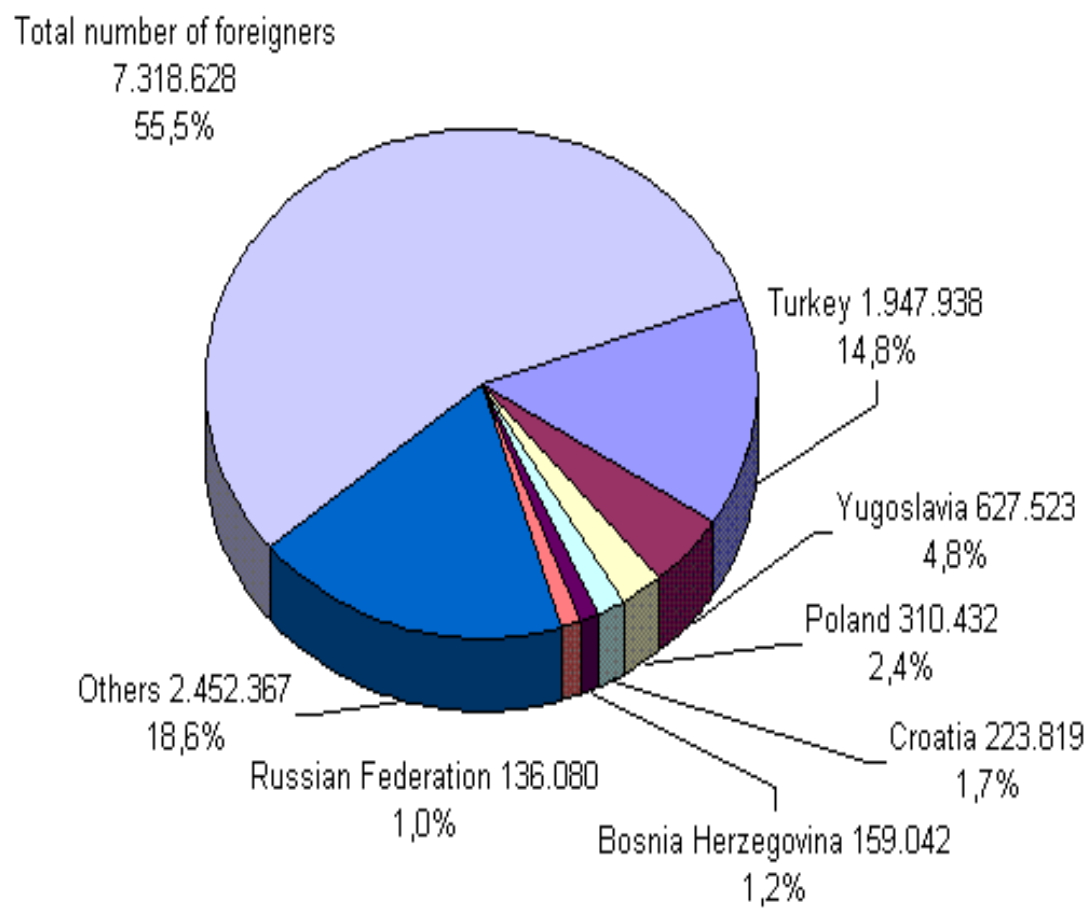
INSERT 1.

Figure 1 shows the effects of globalization to the world economy.



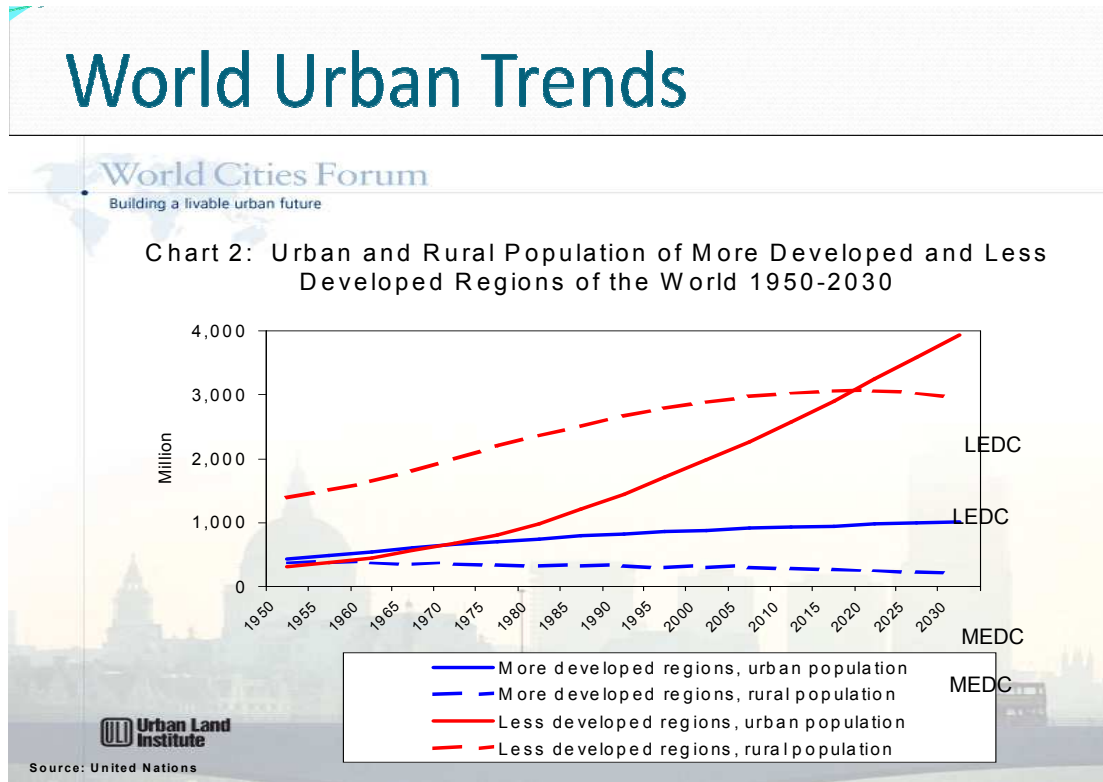
INSERT 2

Figure 2: Showing the volume of foreign migrants to European Union



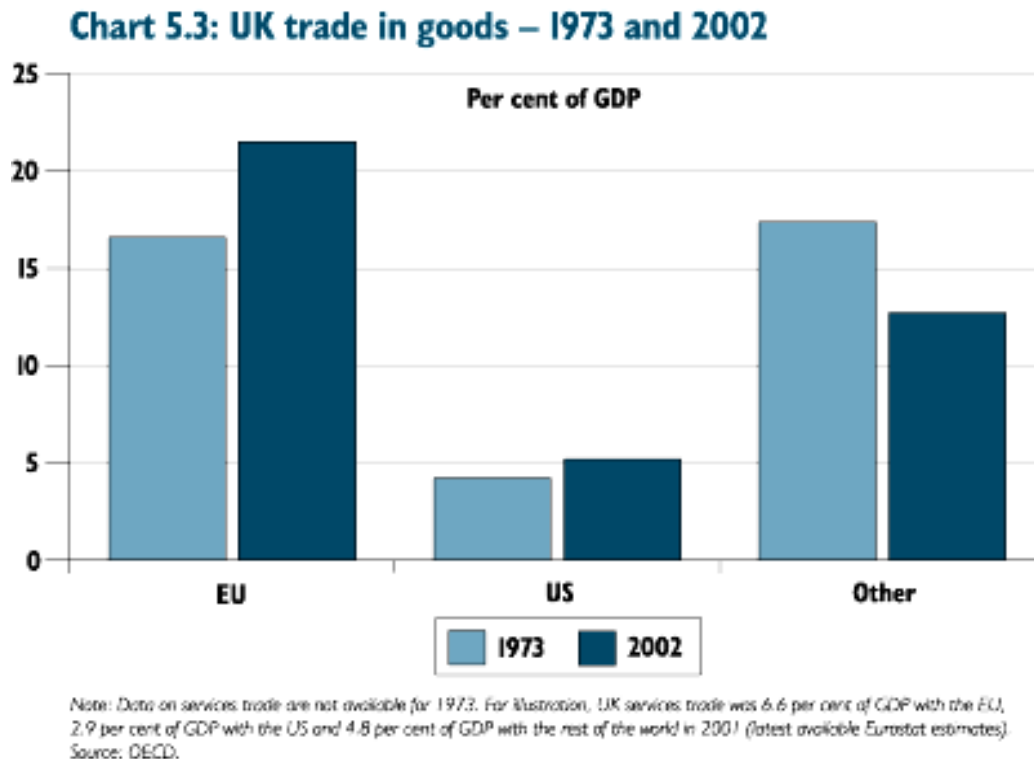
INSERT 3

Figure 3: Urban Trends – rural versus urban population between LEDCs and MEDCs.



INSERT 4

Figure 4: UK trade as compared with other regions



TAMPINES JUNIOR COLLEGE
PRELIMINARY EXAMINATION 2008
GEOGRAPHY 9730/02
19 August 2008



COVER PAGE

Attached the cover page with the answer scripts together.

NAME:

CLASS:

No	Questions	Marks obtained
1	DR1	
2	DR2	
3	DR3	
4	DR4	
Total		/50
5	Q5	
6	Q6	
7	Q7	
Total		/50
Grand Total		/100