



**Catholic Junior College**  
**JC2 Preliminary Examination**  
**Higher 2**

---

**GEOGRAPHY**

**9173/01**

**INSERT**

**23 August 2024**

**3 hours**

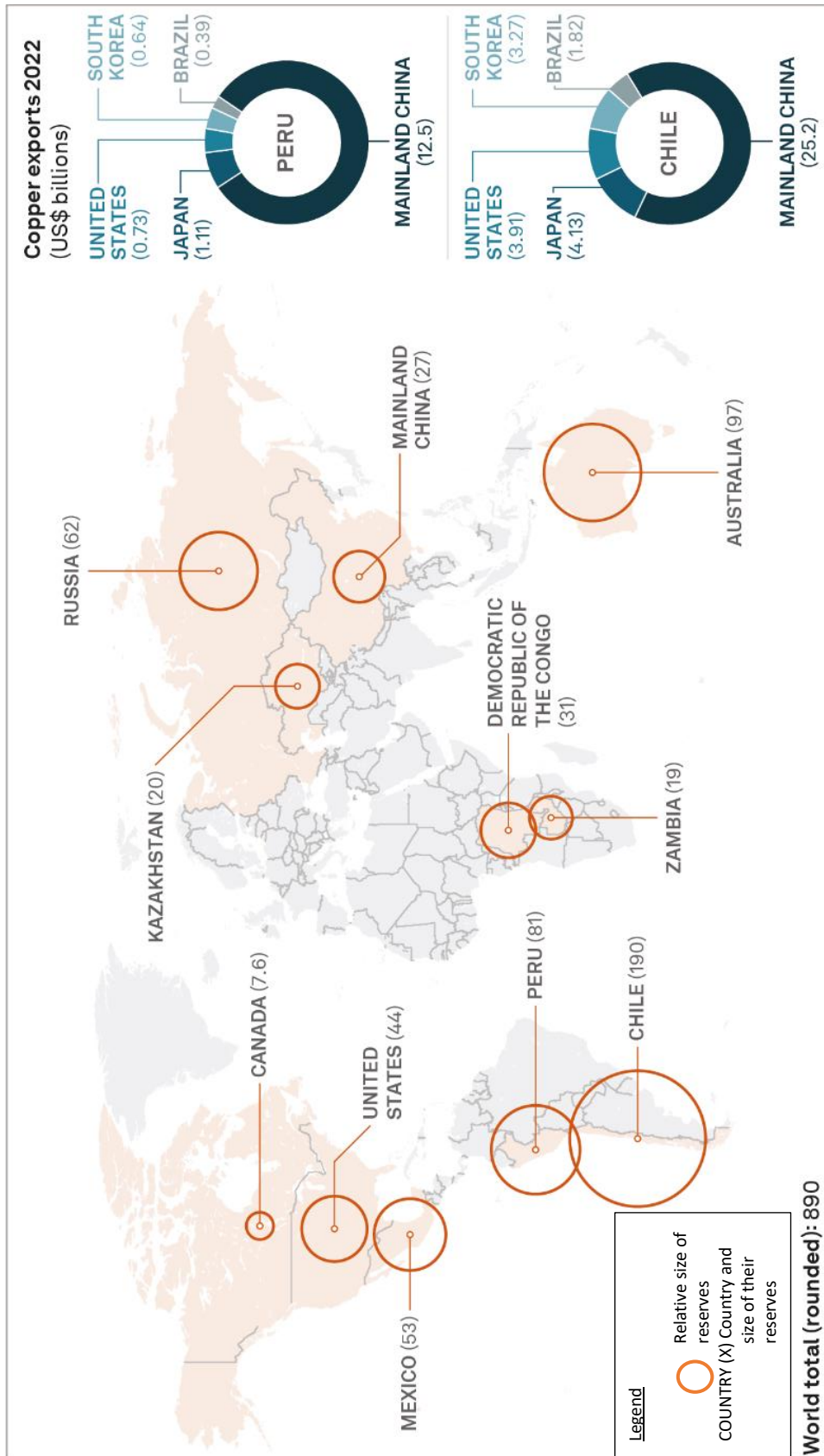
---

**READ THESE INSTRUCTIONS FIRST**

This Insert contains all Photographs, Tables and Figures referred to in the questions.

## Resource 1 for Question 1

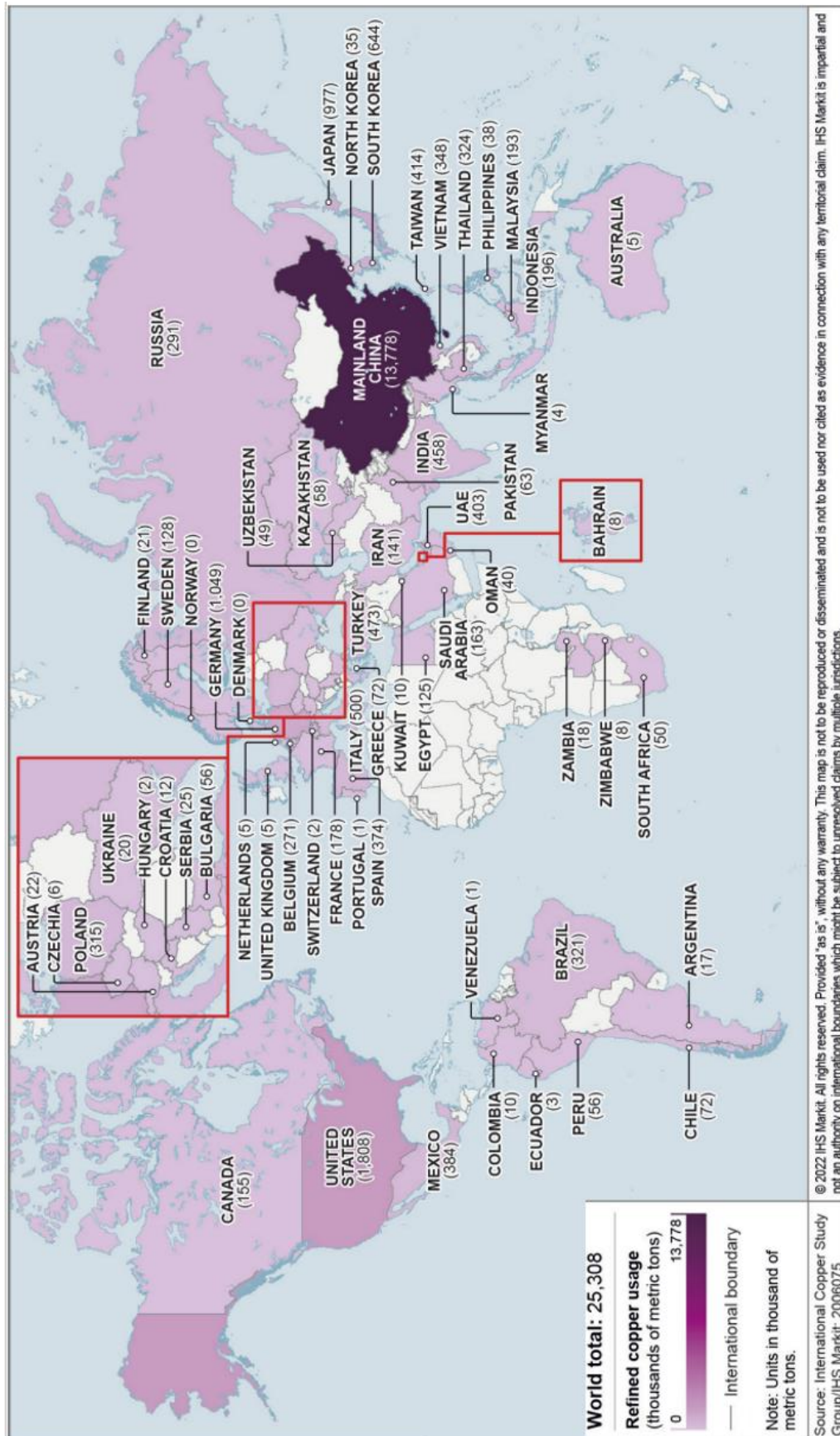
Copper world reserves (millions of metric tonnes), and copper exports of Peru and Chile, 2022



Data compiled June 2, 2023.  
 Source: United States Geological Survey (USGS), January 2023; S&P Global Market Intelligence (Global Trade Atlas); 2009699.  
 © 2023 S&P Global. All rights reserved. Provided "as is" without any warranty. This map is not to be reproduced or disseminated and is not to be used for cited as evidence in connection with any territorial claim.  
 S&P Global is impartial and not an authority on international boundaries which might be subject to unresolved claims by multiple jurisdictions.

## Resource 2 for Question 1

### Global Copper Consumption in 2021



**Resource 3 for Question 1**

**Price of copper between 2013 and 2017, and when a labour strike at Escondida mine occurred**

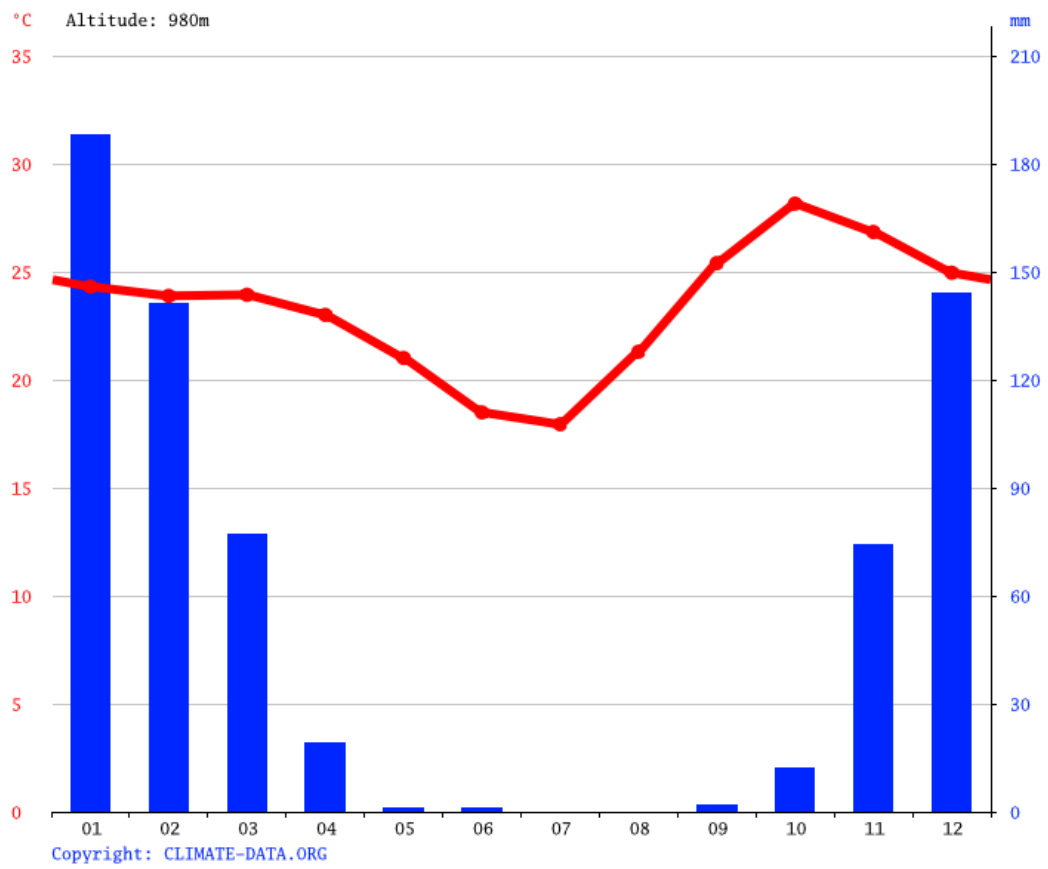
**Resource 4 for Question 1**

**Photo of Escondida mine, the world's largest producer of copper, located in Chile**



## Resource 5 for Question 2

## Climograph for a region in North-West Botswana





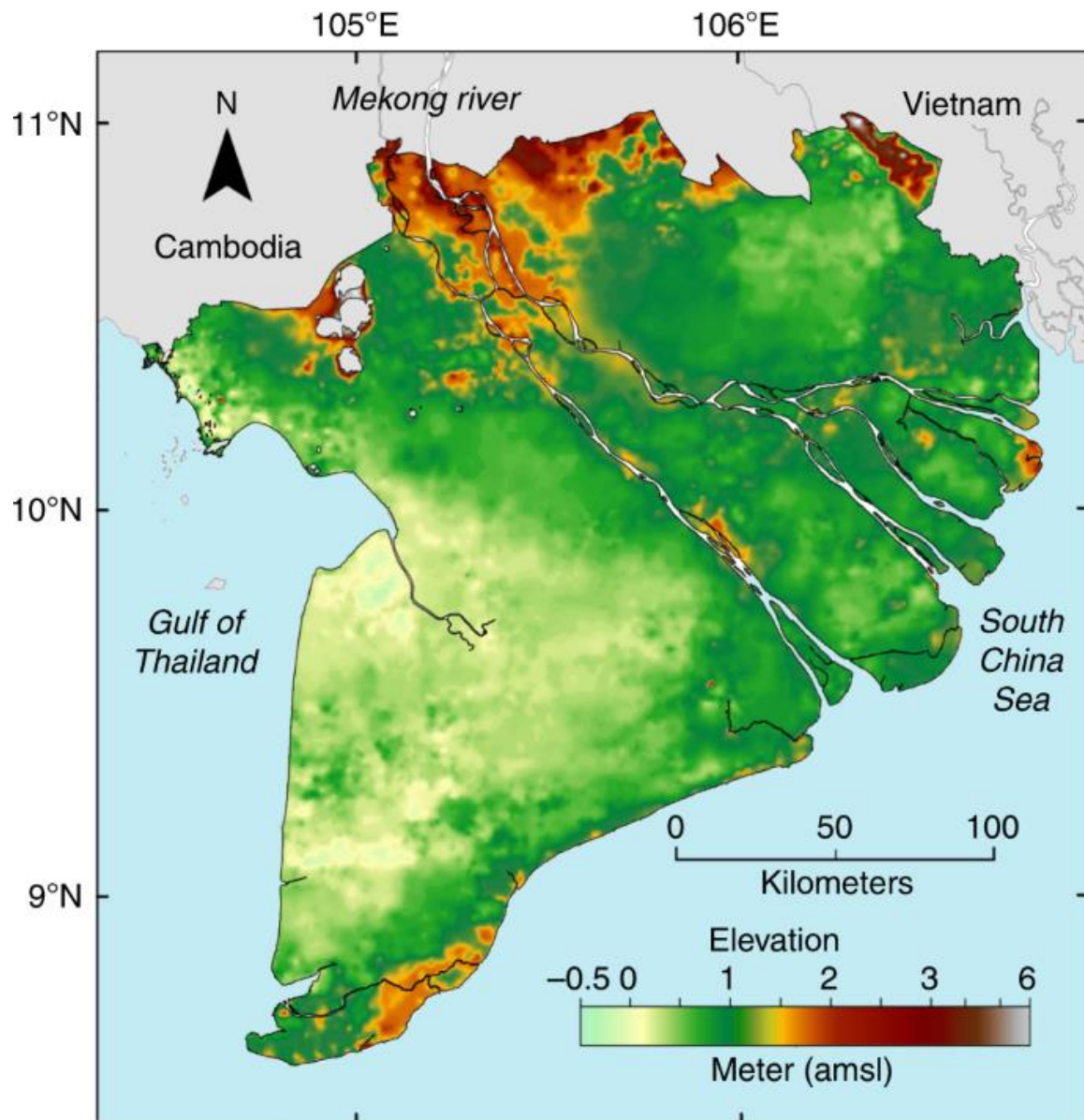
## Resource 6 for Question 2

## Map of Botswana



## Resource 7 for Question 2

## Elevation of the Mekong River delta



**BLANK**