



ST ANDREW'S JUNIOR COLLEGE
J2 Prelims
Higher 2

GEOGRAPHY

Paper 2 Data Response Questions
INSERT

9751/02
13 September 2017

3 hours

READ THESE INSTRUCTIONS FIRST

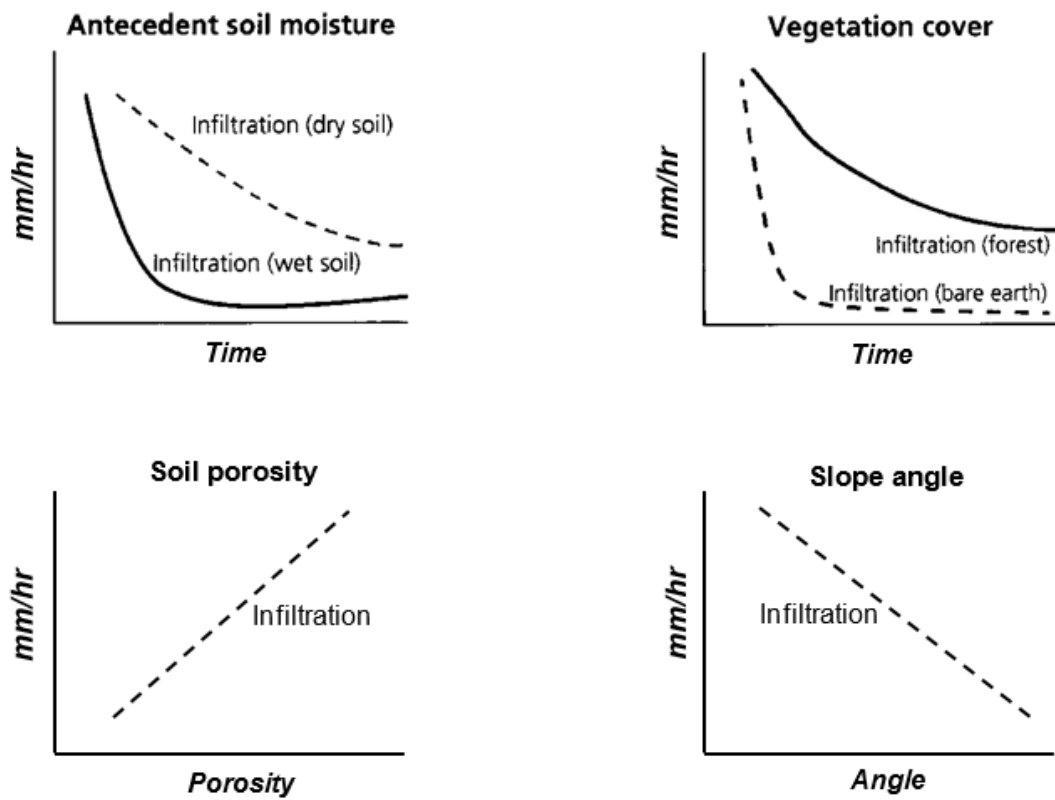
This Insert contains all the Resources referred to in the questions.

This document consists of 9 printed pages.

[Turn Over]

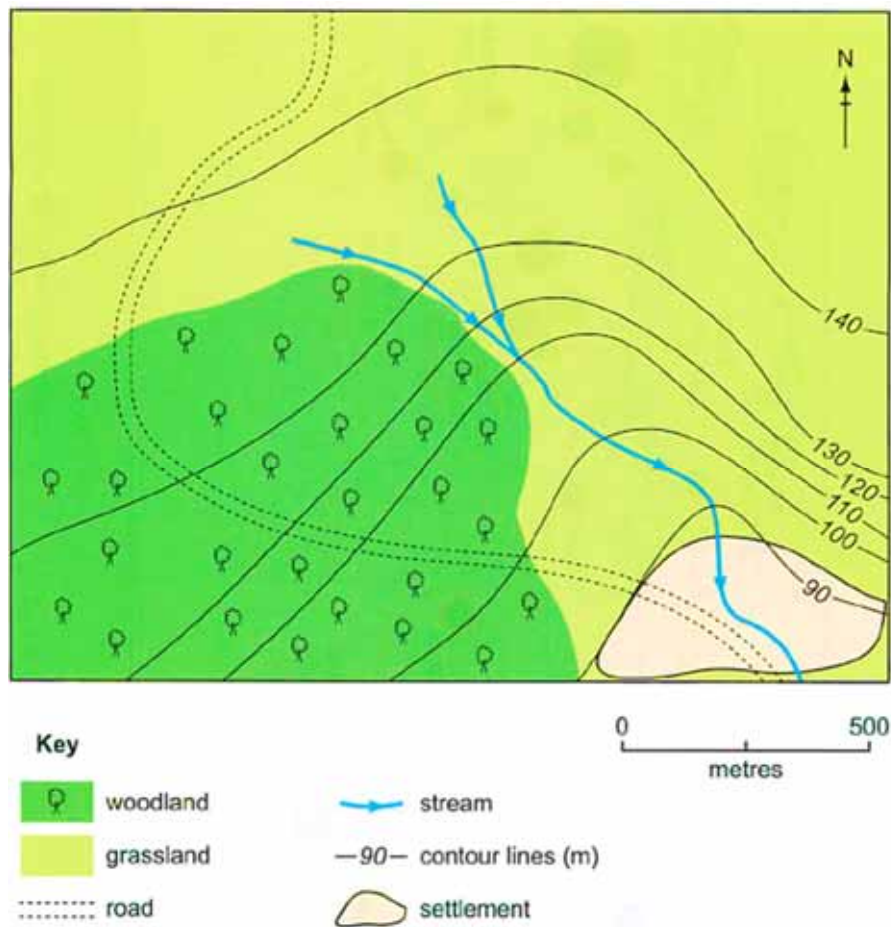
Resource 1 for Question 1

Factors that influence infiltration



Resource 2 for Question 1

A small drainage basin in the UK



Resource 3 for Question 1

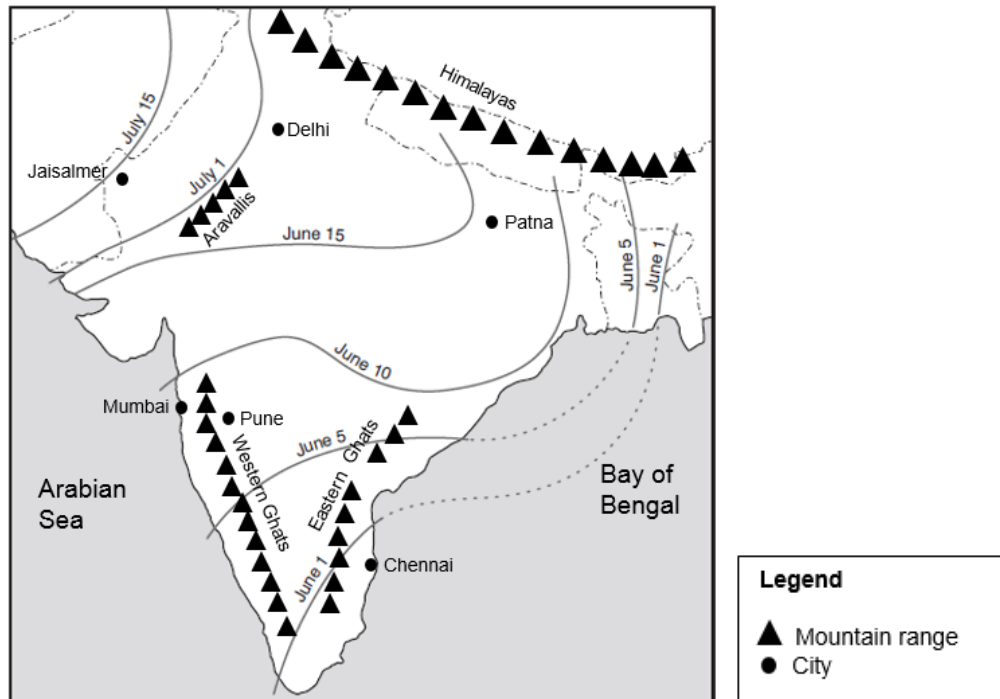
Recording sheet for the measurement of infiltration rates

Description of Selected Site: _____

	Attempt 1	Attempt 2	Attempt 3	
Change in water level observed after ____ min (in mm)				Average infiltration rate
Infiltration rate (mm/hr)				

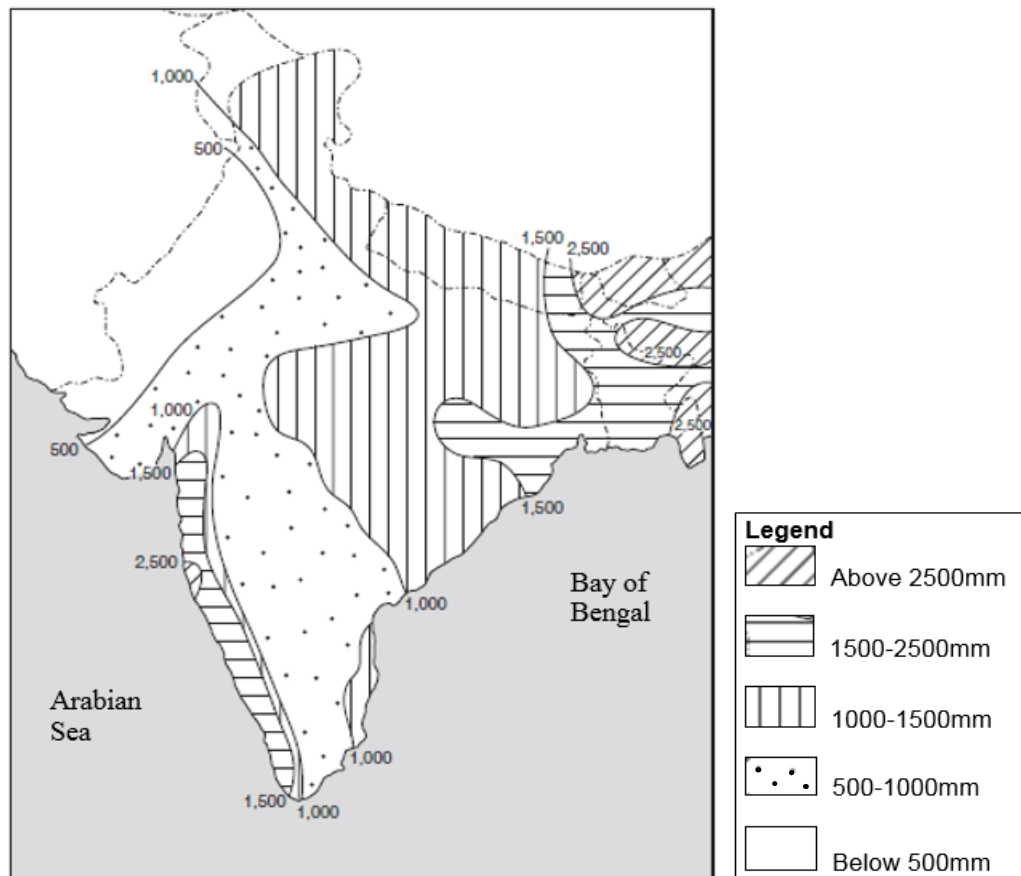
Resource 4 for Question 2

Average dates of onset of the summer monsoon across India and its main mountain ranges



Resource 5 for Question 2

Average annual rainfall in India



Resource 6 for Question 2

Cyclone Vardah as featured in a news coverage, December 2016



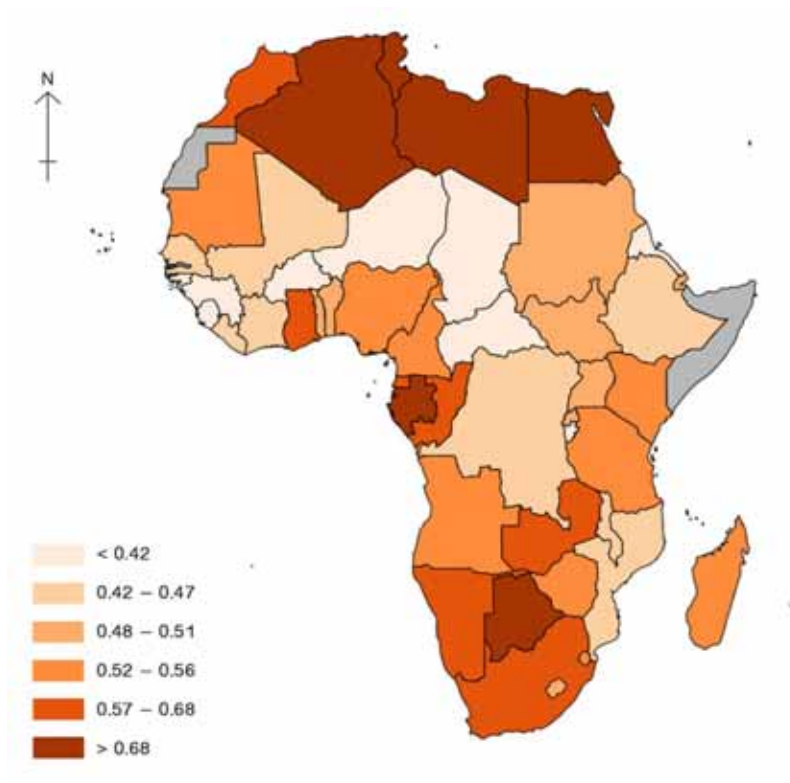
Resource 7 for Question 2

A flooded part of Chennai after Cyclone Vardah



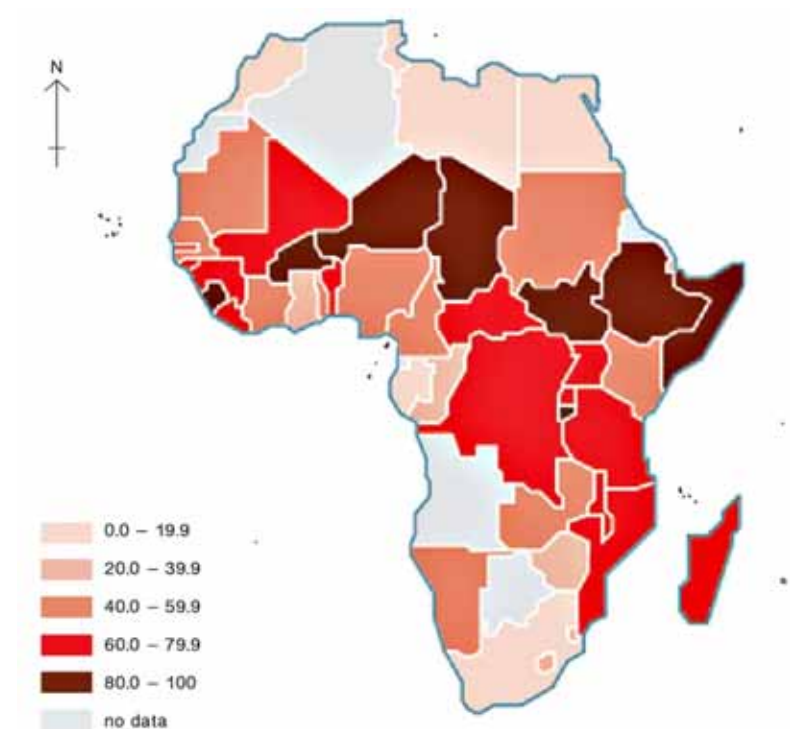
Resource 8 for Question 3

Human Development Index of countries in Africa in 2014



Resource 9 for Question 3

Multidimensional Poverty Index of countries in Africa in 2015



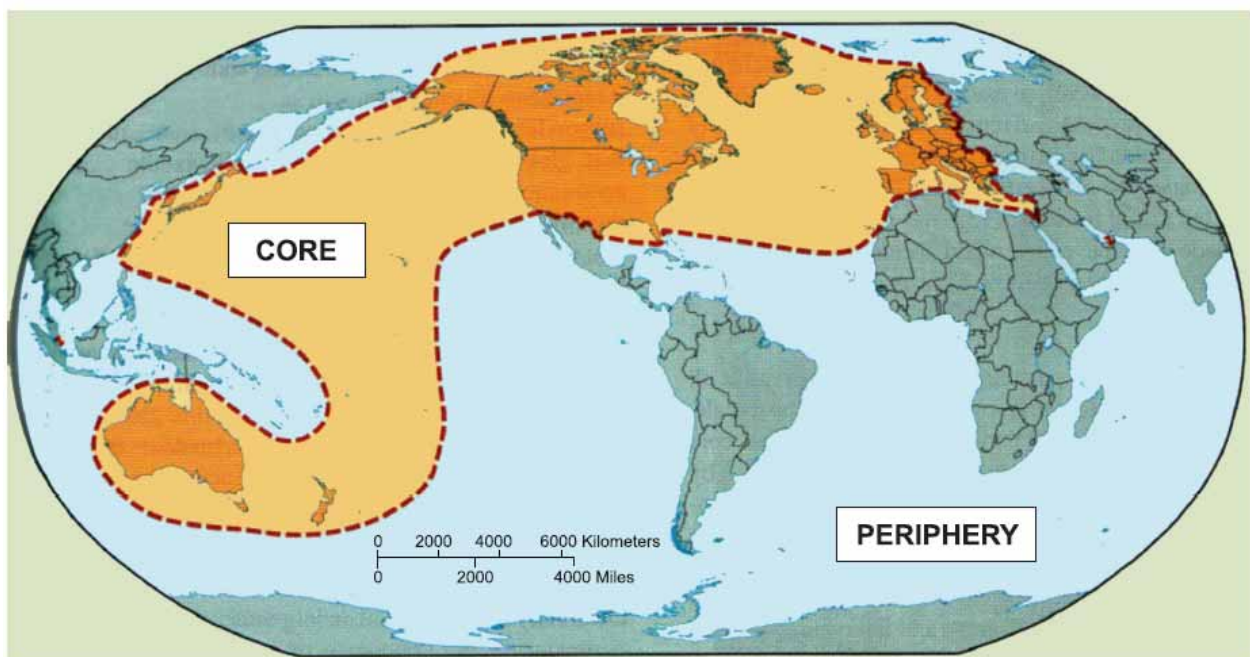
Resource 10 for Question 3

The countries of Africa



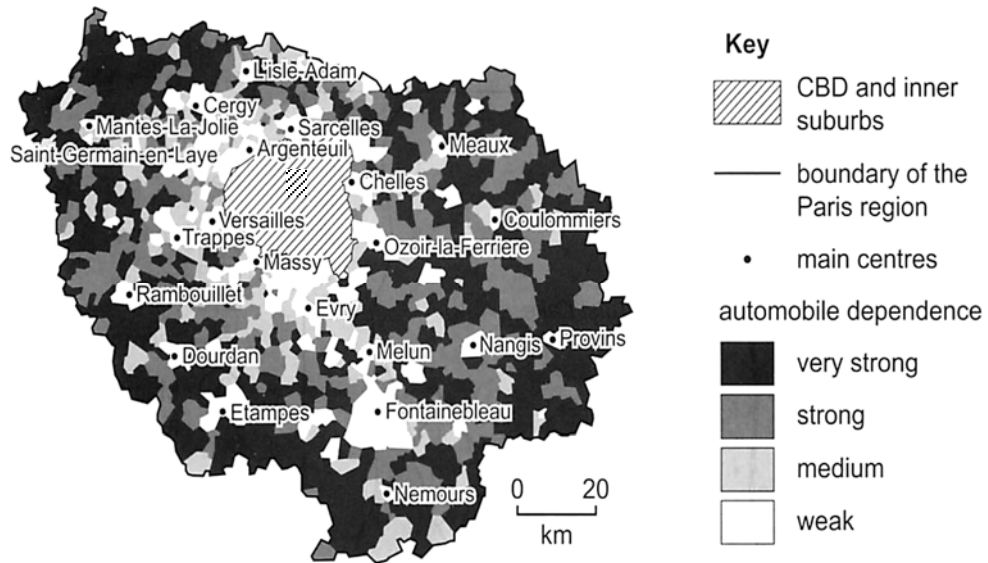
Resource 11 for Question 3

The core-periphery of the global economy



Resource 12 for Question 4

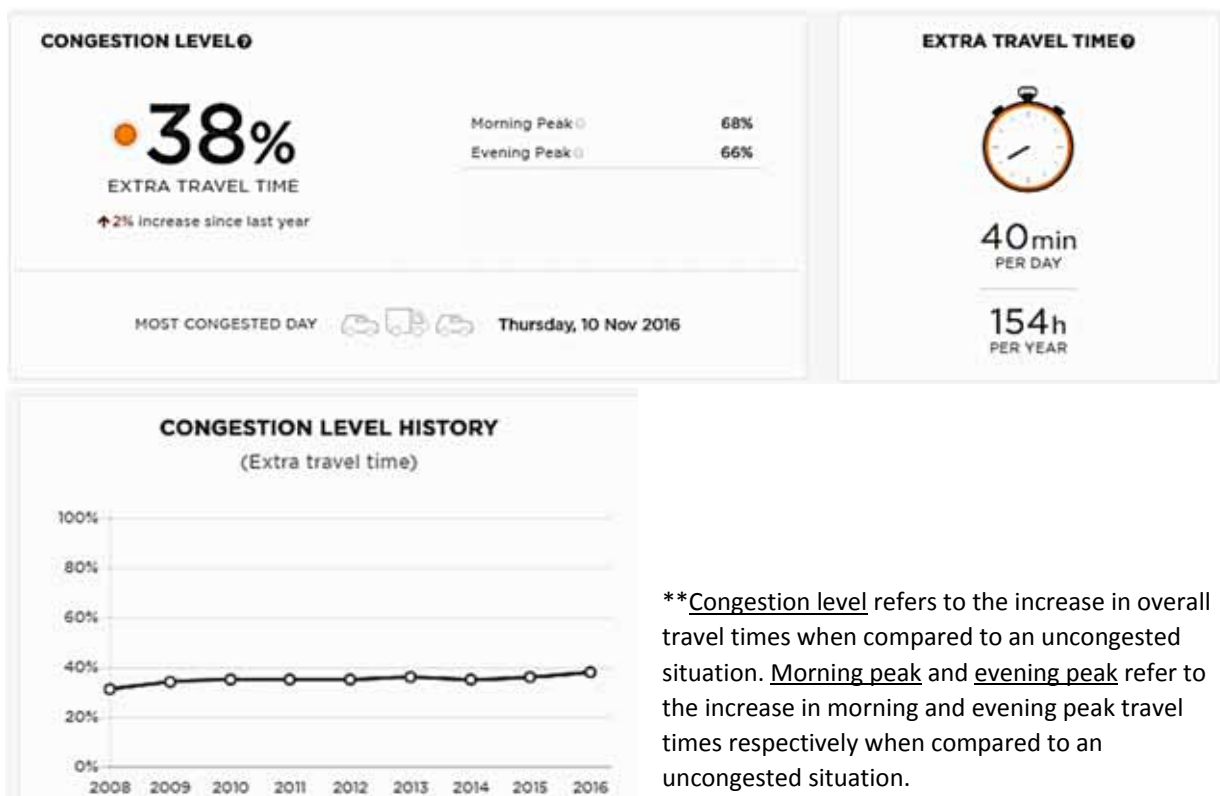
Car dependence* in the Paris region of France, 2001



*Car dependence is defined as the need for the use of a car to travel to work, shop and see friends and family.

Resource 13 for Question 4

Statistics** related to traffic congestion in Paris



Resource 14 for Question 4**A station of *Vélib'*, the public bicycle-sharing scheme in Paris**

The *Vélib'* consists of a network of 1,800 stations, which are available 24 hours a day all year round, and located every 300 meters in Paris. Each station consists of a central terminal (at which payment for rental can be made) and bicycle posts for the docking of bicycles. The first 30 minutes of each trip are always free of charge. Subsequently, the first half-hour costs 1€, second half-hour 2€, and 4€ for every half-hour thereafter.