



ANDERSON JUNIOR COLLEGE

JC2 H2 Geography Preliminary Examination 2013

H2 Geography

9730/02

Paper 2

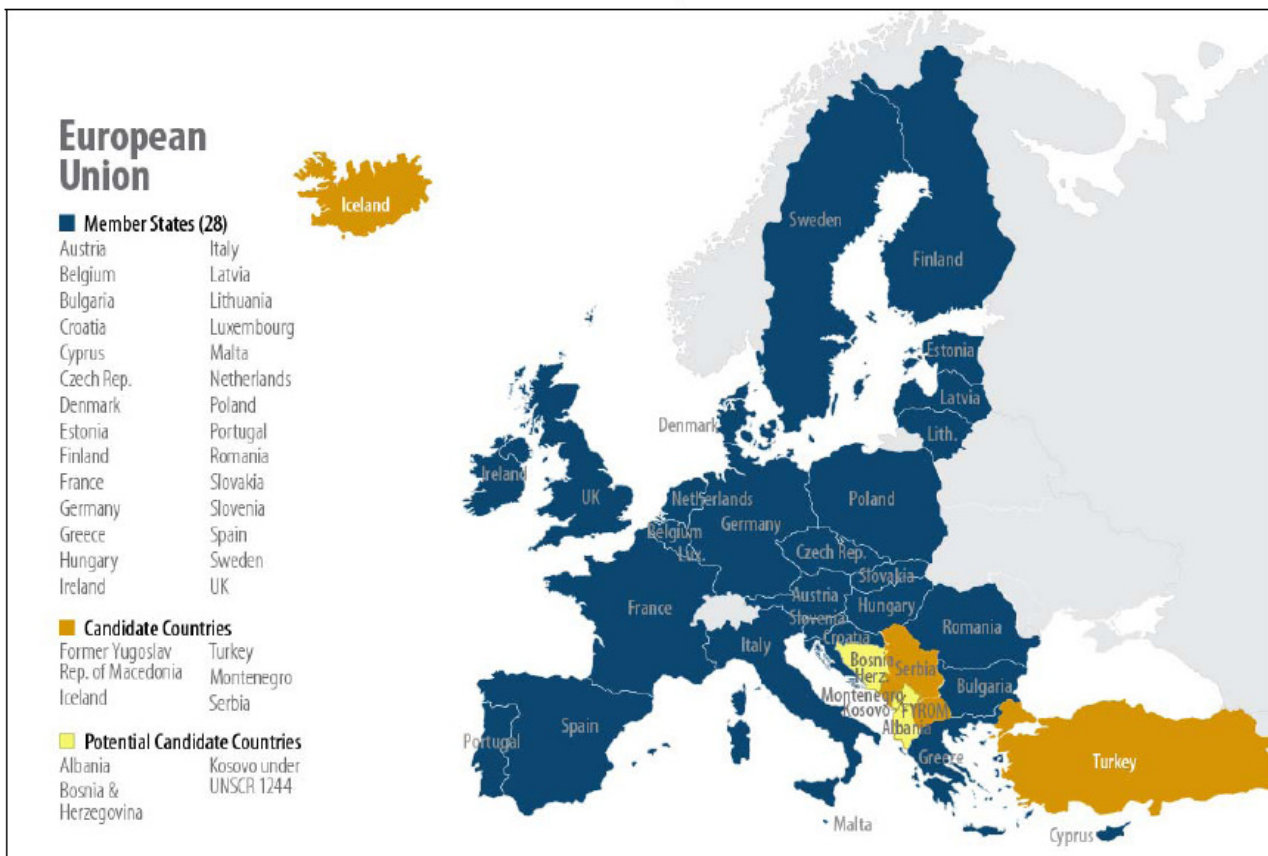
INSERT

Wednesday 4 September 2013 8.00 am – 11.00 am 3 hours

INSTRUCTIONS TO CANDIDATES

This insert contains all the Figures referred to in the question paper.

Fig. 1A for Question 1



Note: The EU has been enlarged to comprise 28 countries, with Croatia becoming the newest member on 1 July 2013.

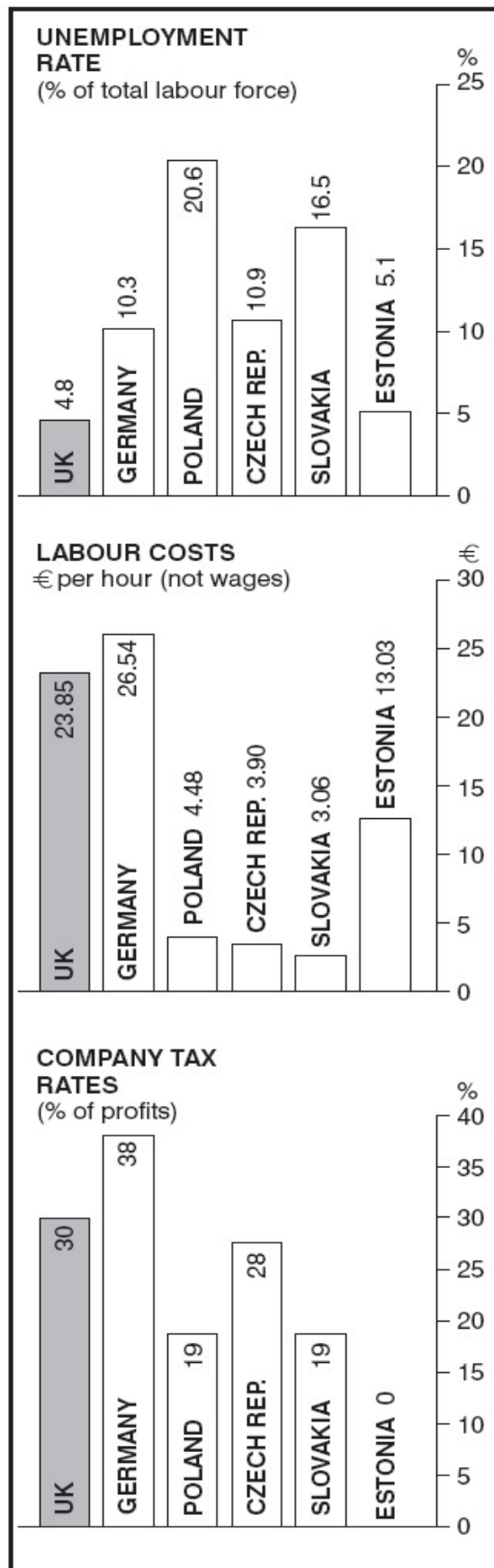
Source: Delegation of the European Union to the United States, "On the Path to EU Membership: The EU Enlargement Process," *EU Insight*, December 2010; Adapted and updated by CRS.

Fig. 1B for Question 1

	GDP per capita at PPP (\$)
Germany	24,140
UK	23,160
Czech Republic	13,280
Slovakia	11,060
Estonia	9,800
Poland	9,210

Source: Extracted from Guinness, P. (2005), *Geofile 505: The New EU: The Movement of Industry from Western Europe to Eastern Europe*

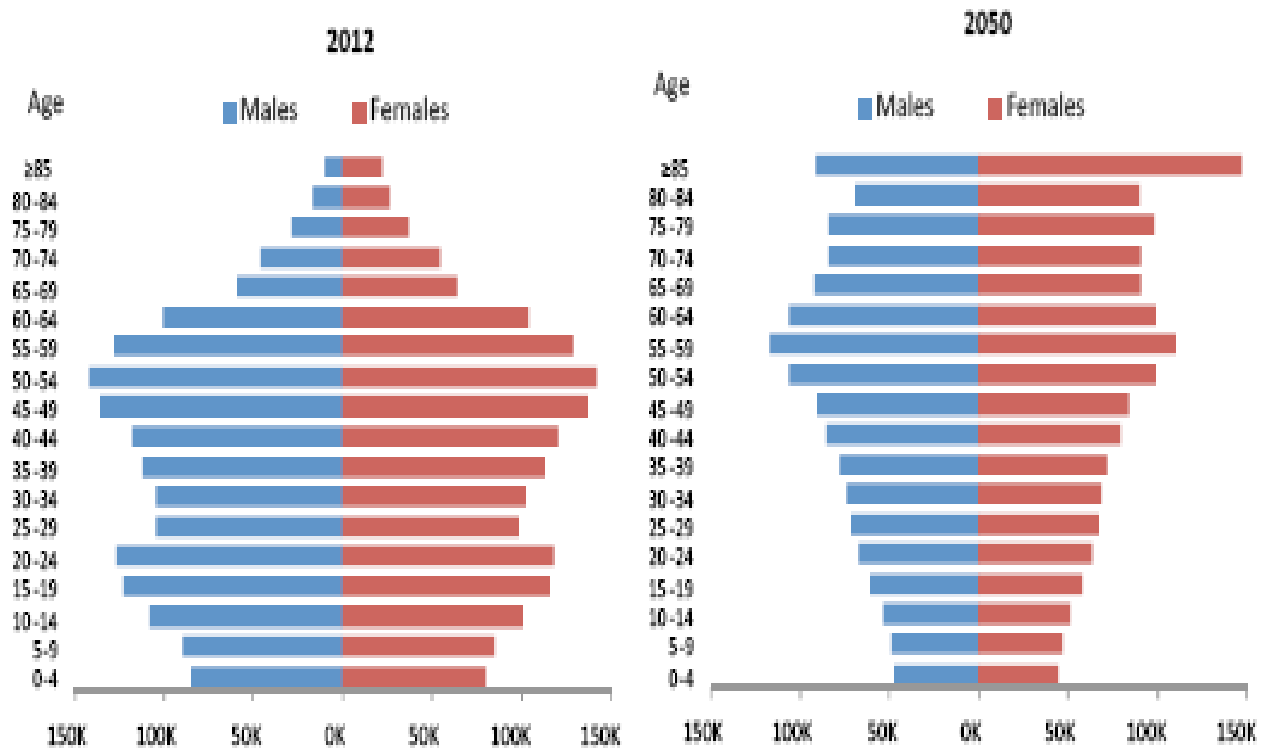
Fig. 1C for Question 1



Note: The figures for labour costs go beyond wages to include employer pensions costs and other benefits, i.e. total labour costs.

Source: The Times, 26 April 2004, extracted from Guinness, P. (2005), Geofile 505: The New EU: The Movement of Industry from Western Europe to Eastern Europe

Fig. 2 for Question 2



Assuming current birth rates and no immigration from 2013 onwards

Source: Department of Statistics, extracted from Singapore's Population White Paper 2013

Fig. 3A for Question 3

Swansea docks before urban renewal

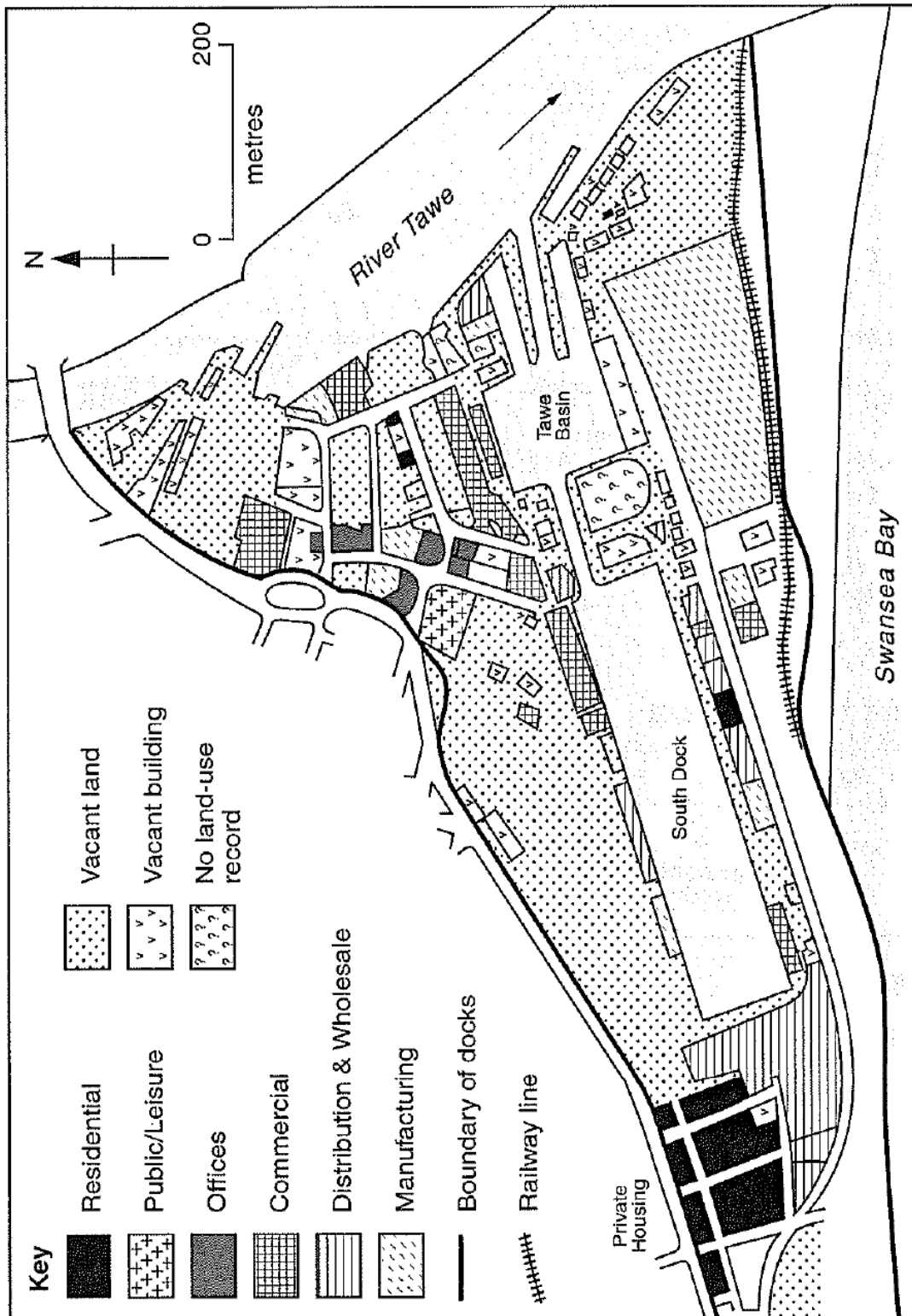
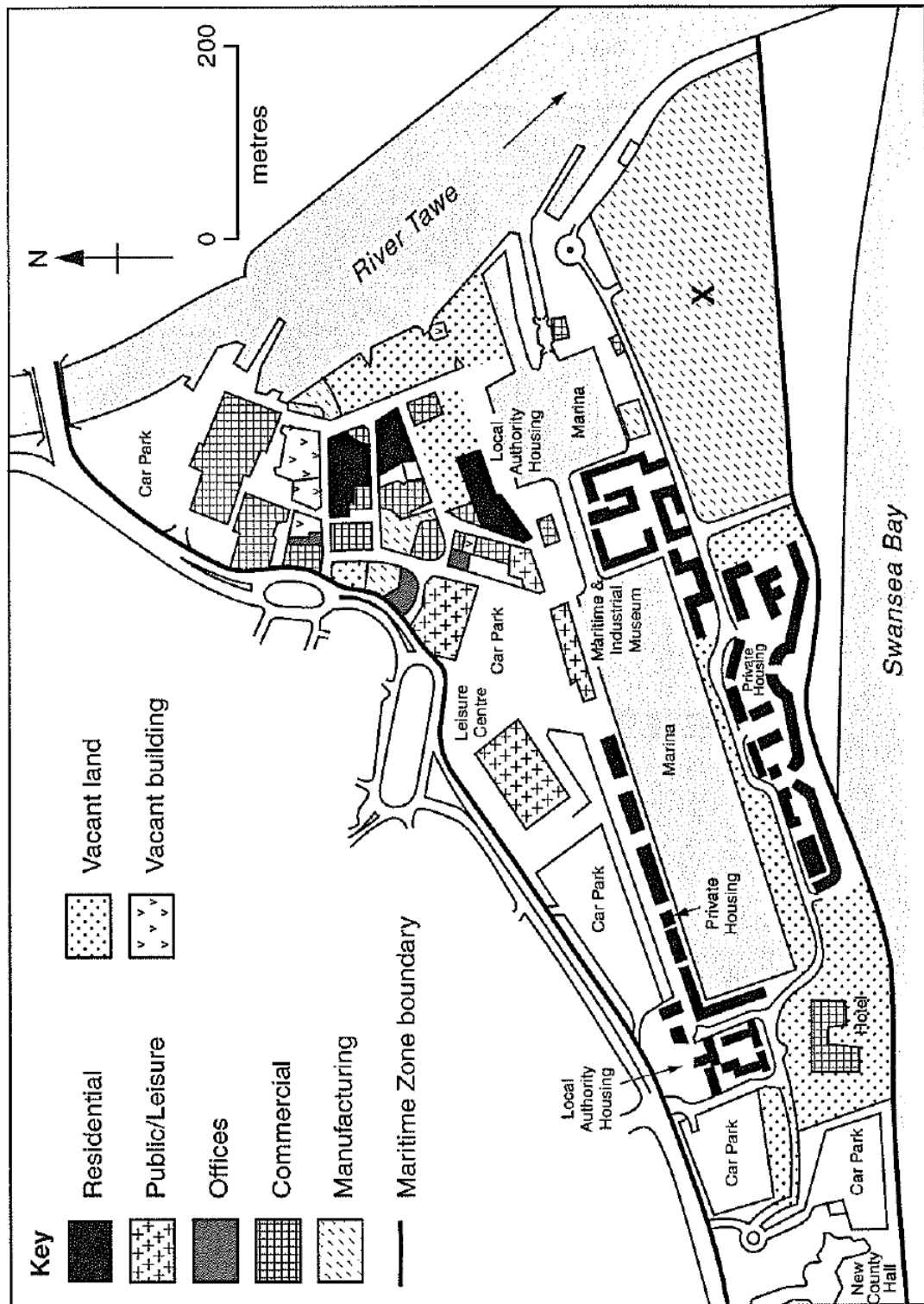


Fig. 3B for Question 3

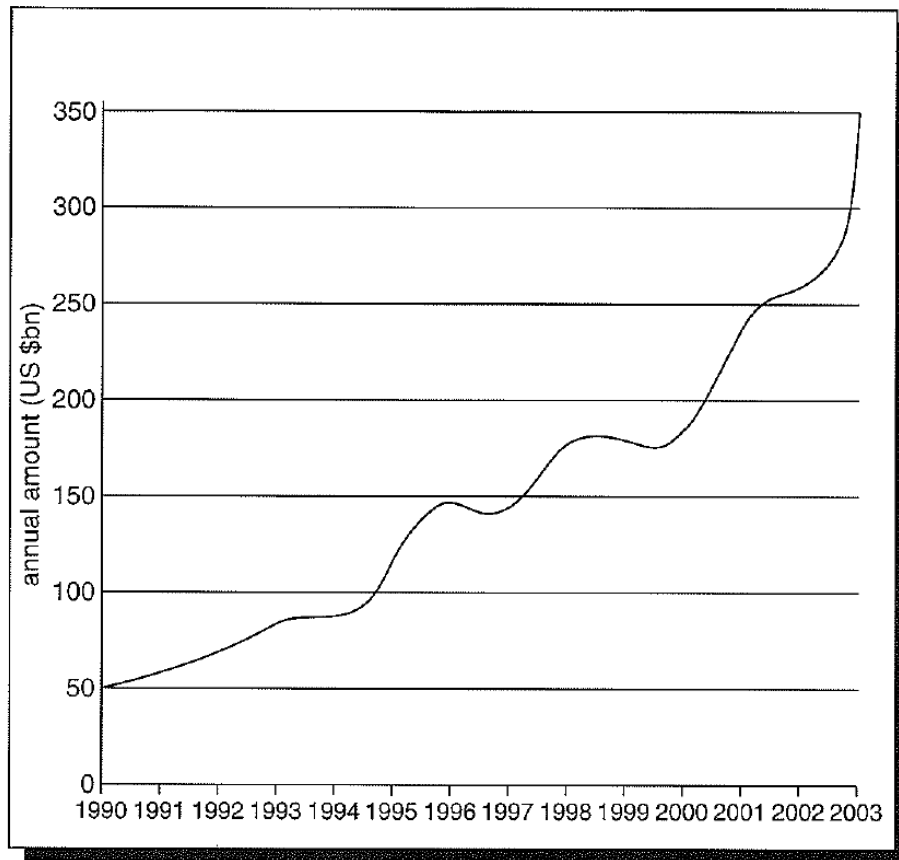
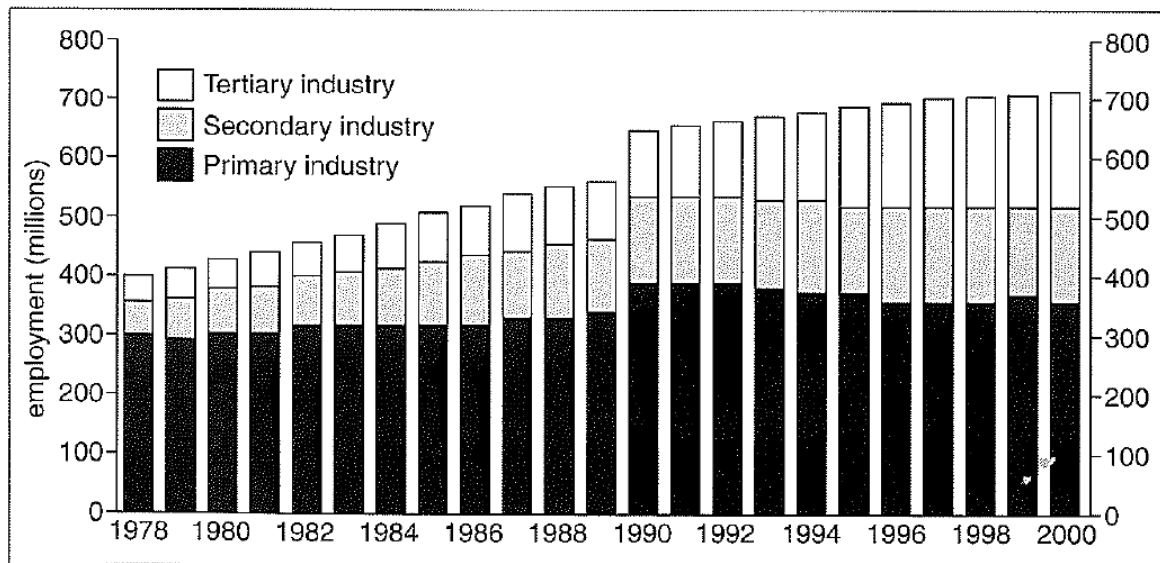
Swansea Maritime Zone after urban renewal



Source: 9730/02/INSERT/O/N/07

Fig. 4A for Question 4

Growth in Chinese exports between 1990 and 2003

**Fig. 4B for Question 4**

Source: 8812/01/INSERT/O/N/07