



National Junior College
SH2 Preliminary Examination 2016

GEOGRAPHY

9730/01

Paper 1 Physical Geography
Higher 2

3 hours
24 August 2016

INSERT

READ THESE INSTRUCTIONS FIRST

This insert contains the figures referred to in the questions as well as the World Outline Maps.

Figs. 1A Question 1

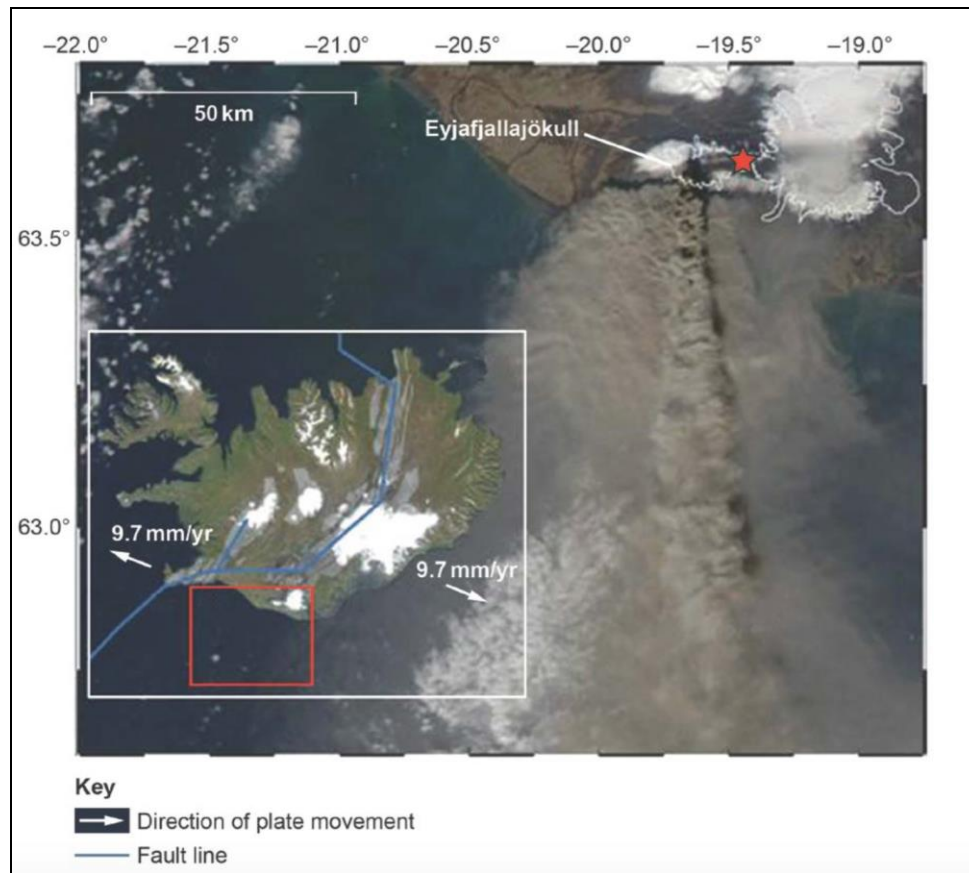


Fig. 1B Question 1

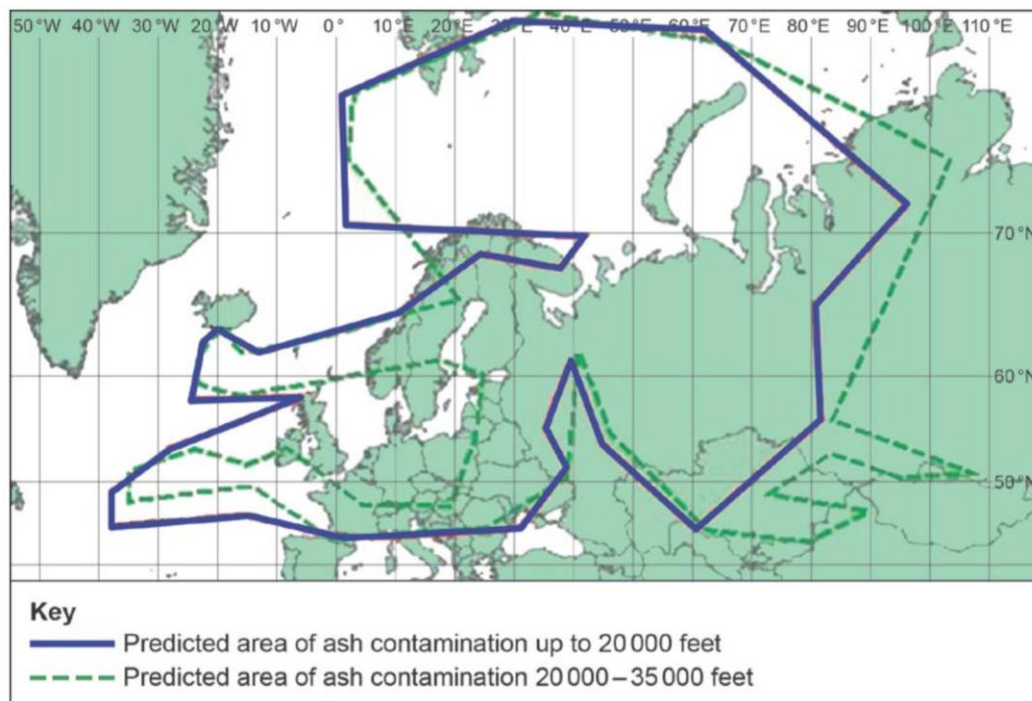


Fig. 2A for Question 2

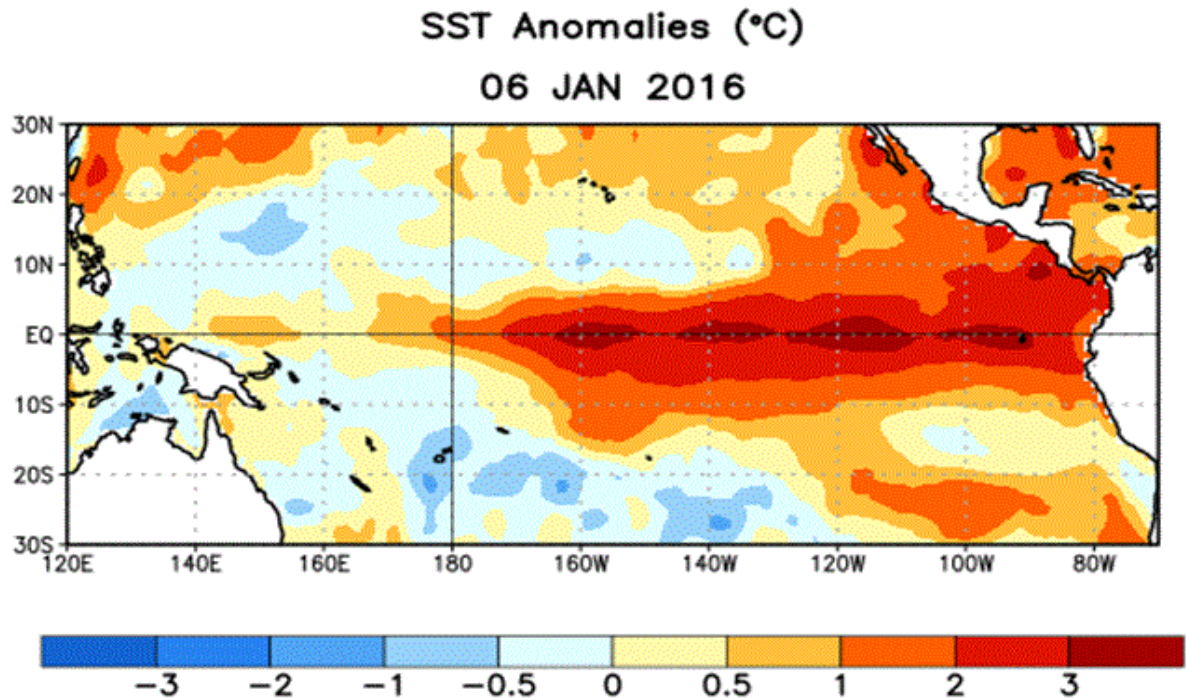


Figure 1. Average sea surface temperature (SST) anomalies (°C) for the week centered on 6 January 2016. Anomalies are computed with respect to the 1981-2010 base period weekly means.

Fig. 2B for Question 2

El Niño could bring drought and famine in West Africa, scientists warn

1 May 2015

A global weather phenomenon could cause a famine in the Sahel this year by combining with already dry conditions.

Professor Adam Scaife, a long term forecaster at the UK Met Office Hadley Centre, said models now agreed an El Niño event was likely and the first impacts may be felt as early as June.

"[A] place that's really important to stress is west Africa, where there is increased risk of drought during El Niño," he said.

Met Office predictions of a drought as early as June were deeply concerning for people awaiting crop-growing rain in the sub-Saharan areas of northern Nigeria, Niger, Chad, Mali, northern Senegal and Mauritania.

Fig. 3A

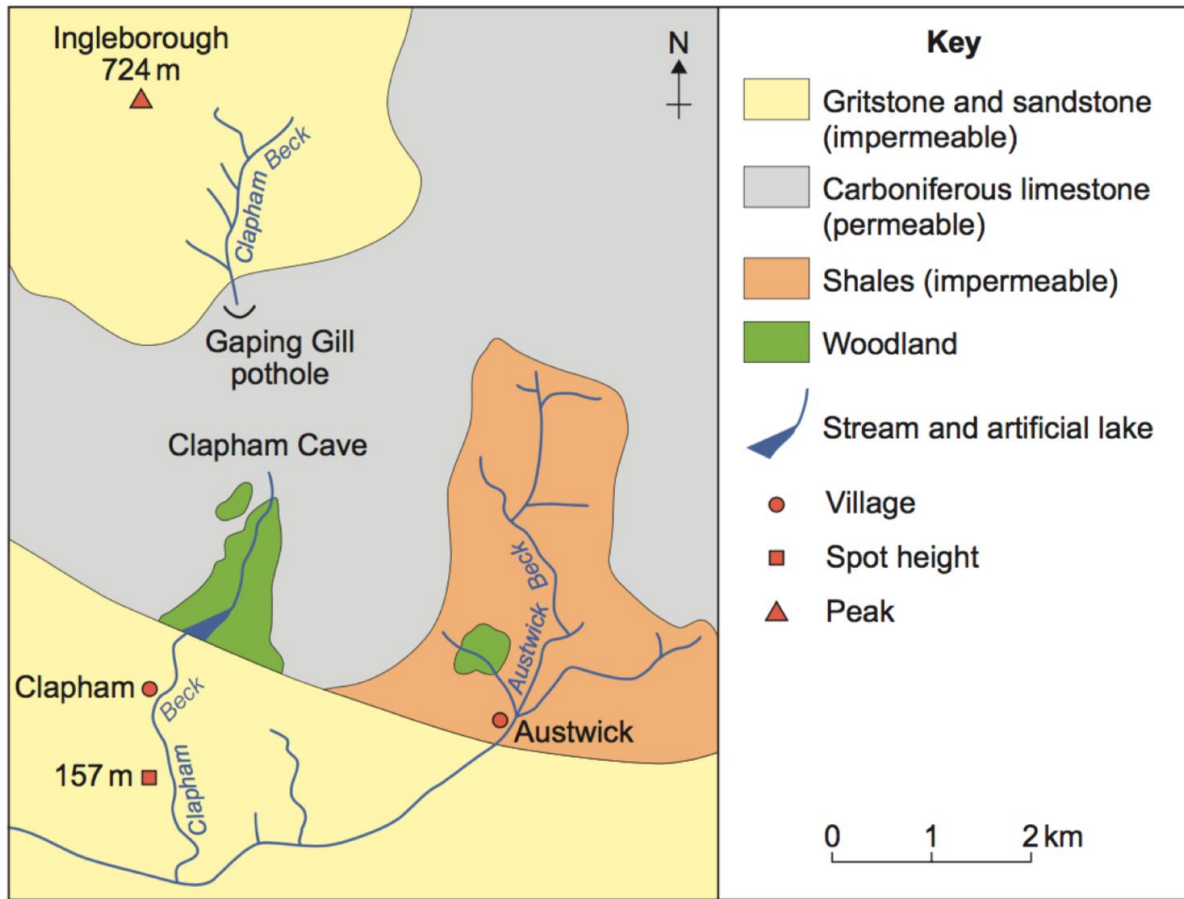


Fig. 3B for Question 3

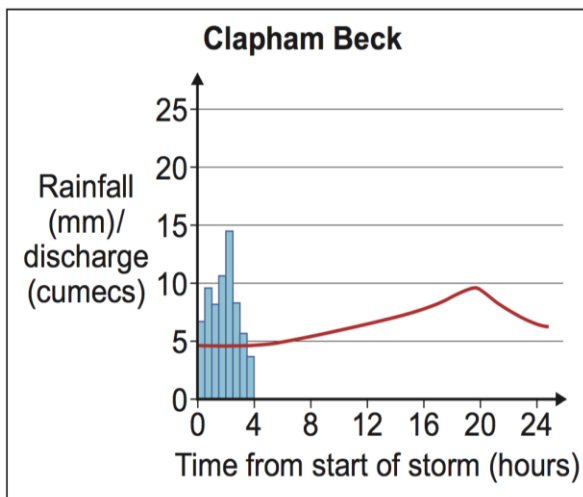


Fig. 3C for Question 3

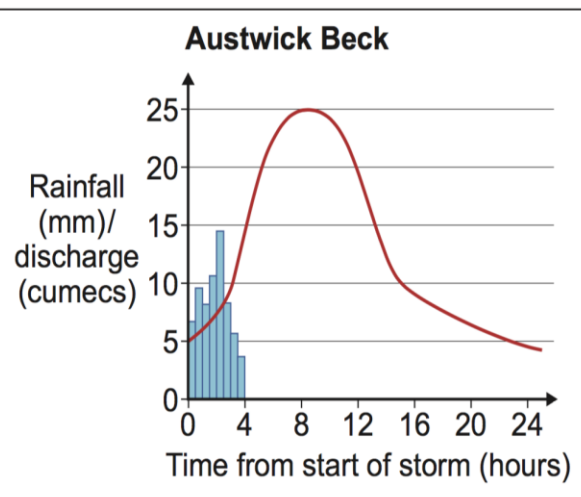
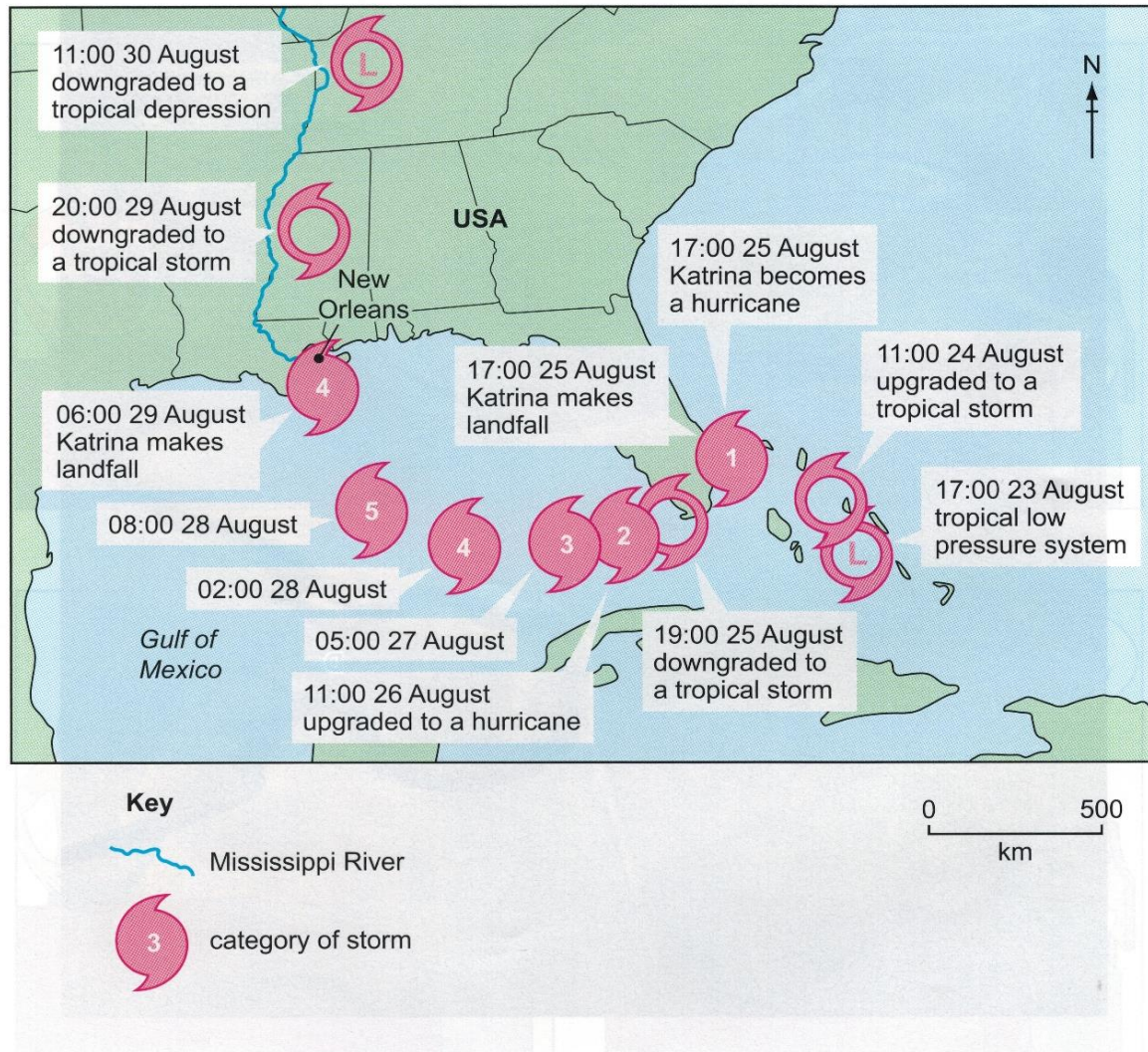


Fig. 4A for Question 4

A converse The track and development of Hurricane Katrina, August 2005



* 'Carbon footprint' means the amount of greenhouse gas emissions caused by a person or

Fig. 4B for Question 4

in collaboration with
UNIVERSITY OF
General Certificate of Education Advanced Level
Higher 2

Areas of flooding brought about by Katrina in New Orleans

