

Class:	Register No:	Name:
---------------	---------------------	--------------



CRESCENT GIRLS' SCHOOL
SECONDARY FOUR
PRELIMINARY EXAMINATION 2024

GEOGRAPHY

2279/01

Paper 1
INSERT

20 August 2024
1 hour 45 minutes

READ THESE INSTRUCTIONS FIRST

Write your name, register number and class on all the work you hand in.

The Insert contains additional resources referred to in the questions.

Fig. 1.1 for Question 1

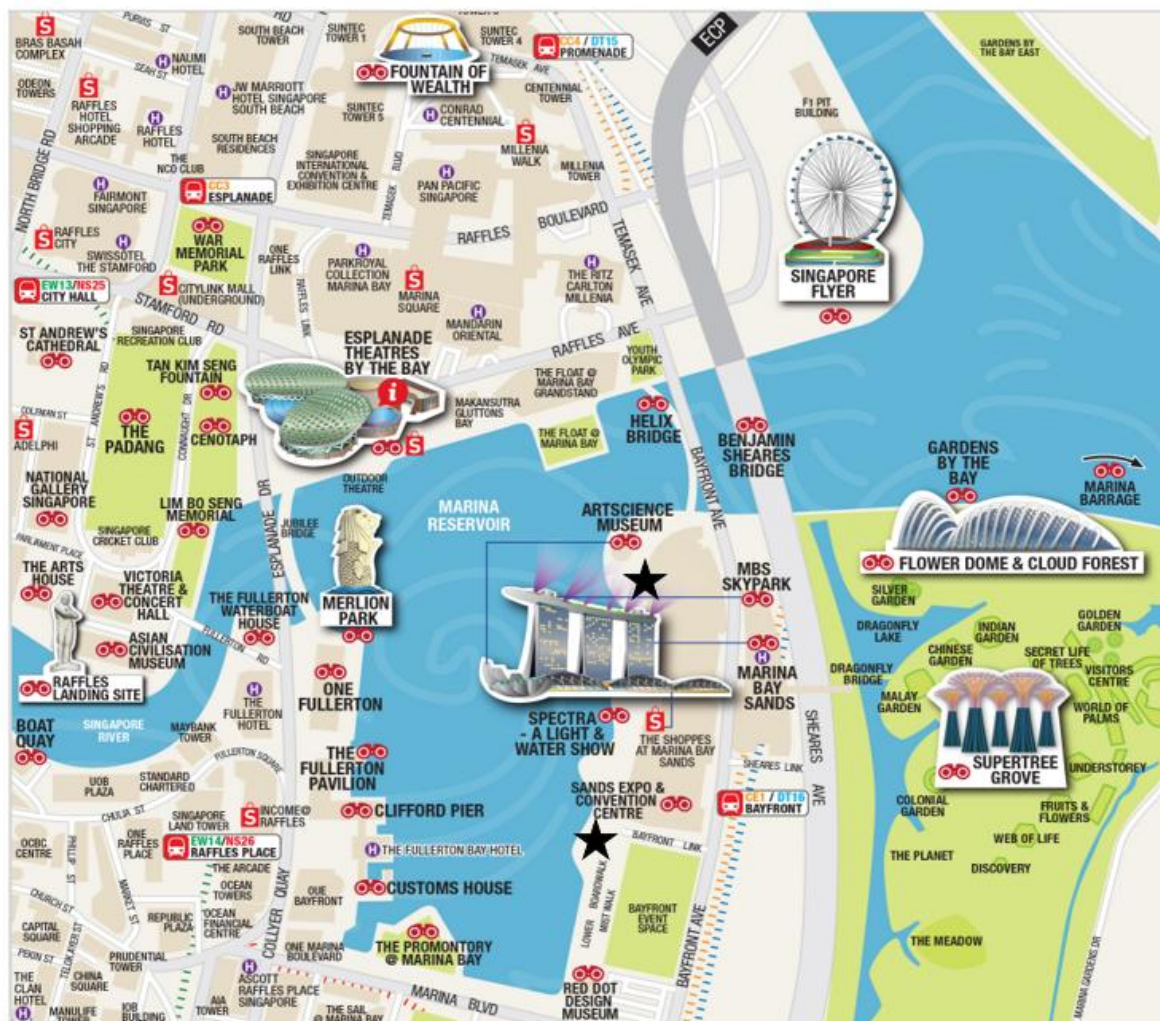
Information about Marina Bay

Marina Bay – Centrepiece of Singapore’s Urban Transformation Efforts

An iconic spot that has represented Singapore globally, Marina Bay was meticulously designed by the Urban Redevelopment Authority as a vibrant must-visit destination for Singaporeans and tourists alike. Marina Bay has grown into a leading financial centre, a civic space, and a community playground for all. An array of architectural masterpieces dot the waterfront, such as Esplanade–Theatres on the Bay and Marina Bay Sands, alongside open spaces such as the Promontory and Merlion Park. Next to it is Gardens by the Bay, filled with flourishing greenery and unique structures such as the Supertree Grove, Flower Dome and Cloud Forest. Marina Bay is also where a variety of large-scale local and international events (such as the National Day Parade, Marina Bay Singapore Countdown, i Light Marina Bay light art festival and Singapore F1 Grand Prix) are held, injecting buzz and vibrancy into the area for the community.

Fig. 1.2 for Question 1

Map of Marina Bay



★ Data Collection Location

Fig. 2.1 for Question 2

International Tourist Arrivals to Japan (Country/Region), May 2019 versus May 2024

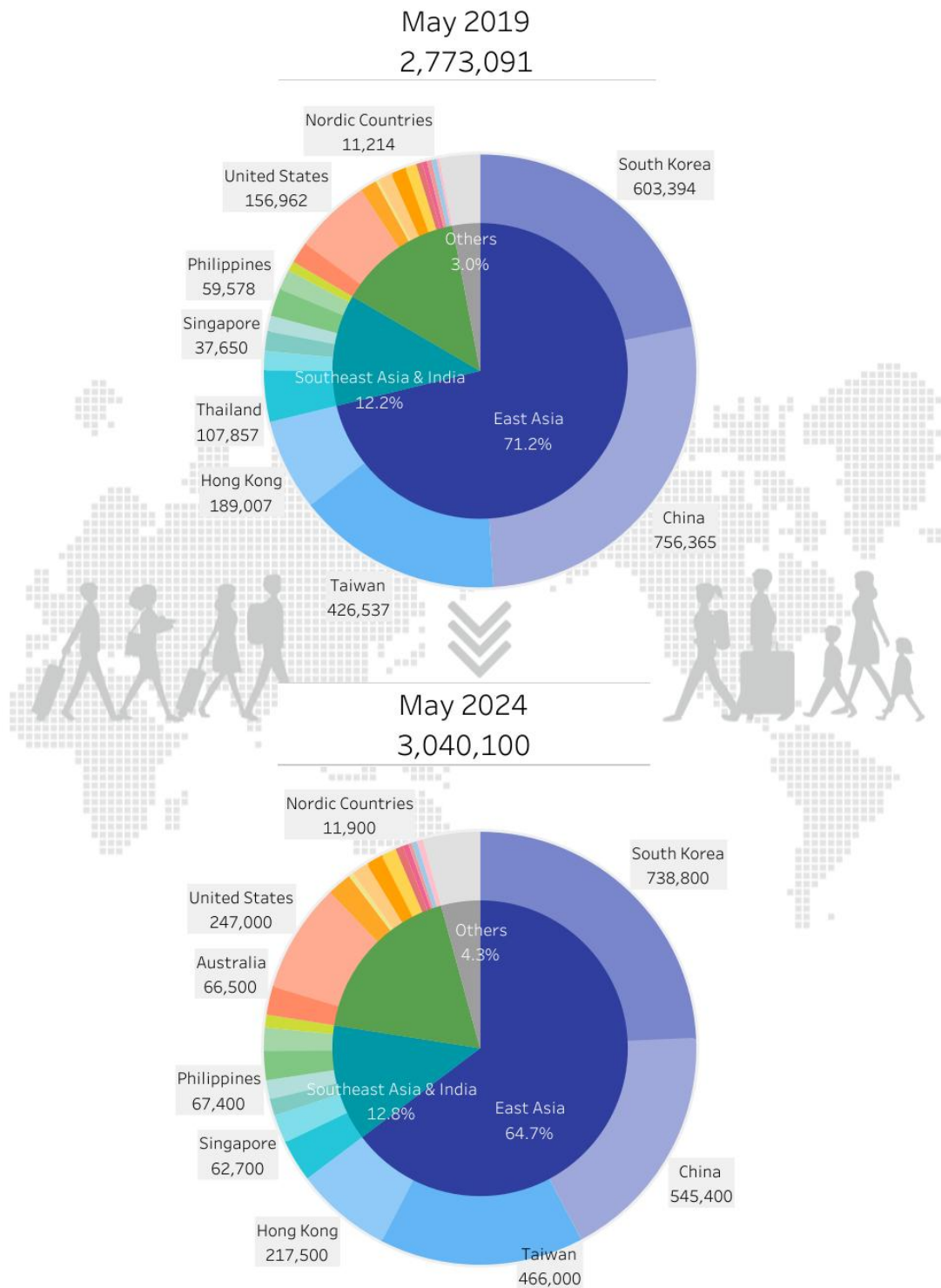


Fig. 2.3 for Question 2

Photograph of View of Mount Agung from Lempuyang Temple in Bali





Fig. 2.5 for Question 2

Travel Checklist for Responsible Travelling

MAKE TRAVEL MATTER[®]

TRAVEL CHECKLIST

Our **TreadRight Foundation** has created this checklist as a simple way to become a more responsible traveler.

1 DO YOUR RESEARCH

- ☐ Choose companies that have a commitment to responsible travel and to minimizing the footprint of their offices and operations.
→ The Travel Corporation's 5-year sustainability strategy **How We Tread Right** addresses our collective impact on our planet, its people, and wildlife through 11 goals tied to the UN Global Goals. **Learn how** you can get involved.
- ☐ Request your travel documents be sent to you electronically rather than printed and mailed to reduce paper waste
- ☐ Consider traveling during shoulder seasons, or to less popular areas
- ☐ Fly direct; take-off and landing are the most fuel intensive portions of the flight
- ☐ Consider airlines that are investing in sustainable aviation fuels

2 BE PREPARED

<input type="checkbox"/> Pack reusables such as a water bottle or personal water filter and reusable shopping bag	<input type="checkbox"/> Pack light; the heavier the airplane, the more greenhouse gases it emits
<input type="checkbox"/> Bring toiletries in reusable bottles	<input type="checkbox"/> Learn local greetings and customs before you go!

3 TREAD RIGHT WHILE TRAVELING

<input type="checkbox"/> Refuse single-use plastic and recycle when this cannot be avoided	<input type="checkbox"/> Walk, bike, or use public transportation when possible
<input type="checkbox"/> Shop and eat locally to support the community	<input type="checkbox"/> Take shorter showers (avoid baths)
<input type="checkbox"/> Purchase locally made souvenirs and pay a fair price	<input type="checkbox"/> Turn off all lights, heat/AC, and TV when you leave your room
<input type="checkbox"/> Avoid any purchase of wildlife products such as ivory	<input type="checkbox"/> When in use, keep AC at a moderate temperature
<input type="checkbox"/> Do not ride animals that ought not be ridden	<input type="checkbox"/> Adhere to hotel linen reuse programs to reduce water and energy consumption
<input type="checkbox"/> Research wildlife venues and be sure they adhere to reputable animal welfare guidelines	<input type="checkbox"/> Visit a local farmer's market and meet the growers of your food, or try a farm-to-table meal
<input type="checkbox"/> Honor local customs, immerse yourself in the local culture and listen intentionally to local community members	<input type="checkbox"/> Seek out experiences that are owned by or employ underrepresented communities

4 UPON RETURN

- ☐ Share your experiences with friends and family

Fig. 3.1 for Question 3

Climograph of India

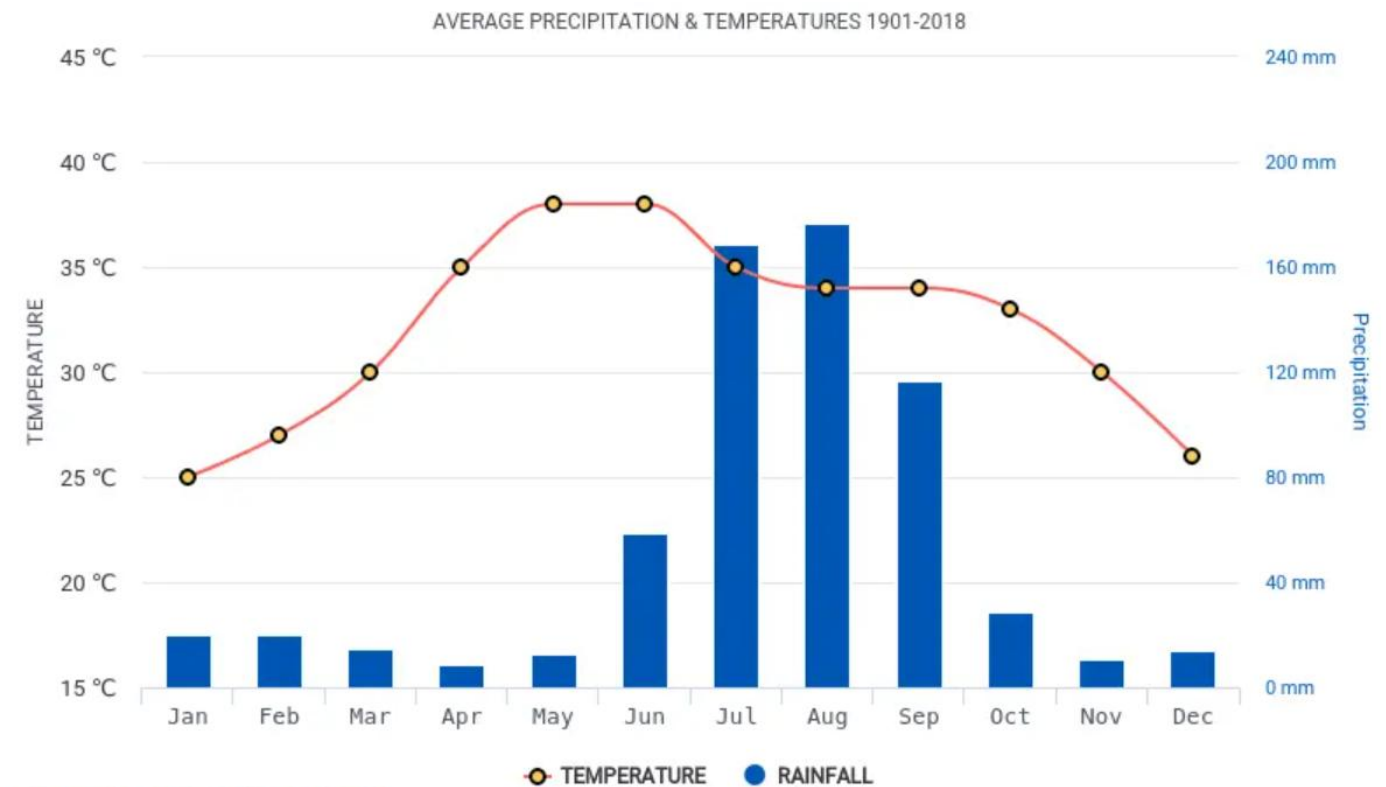


Fig. 3.2 for Question 3

Monsoon wind system in India between June and September

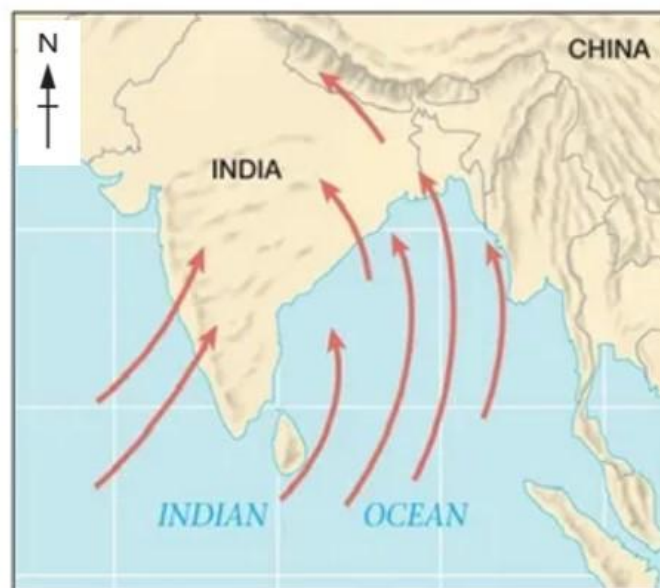
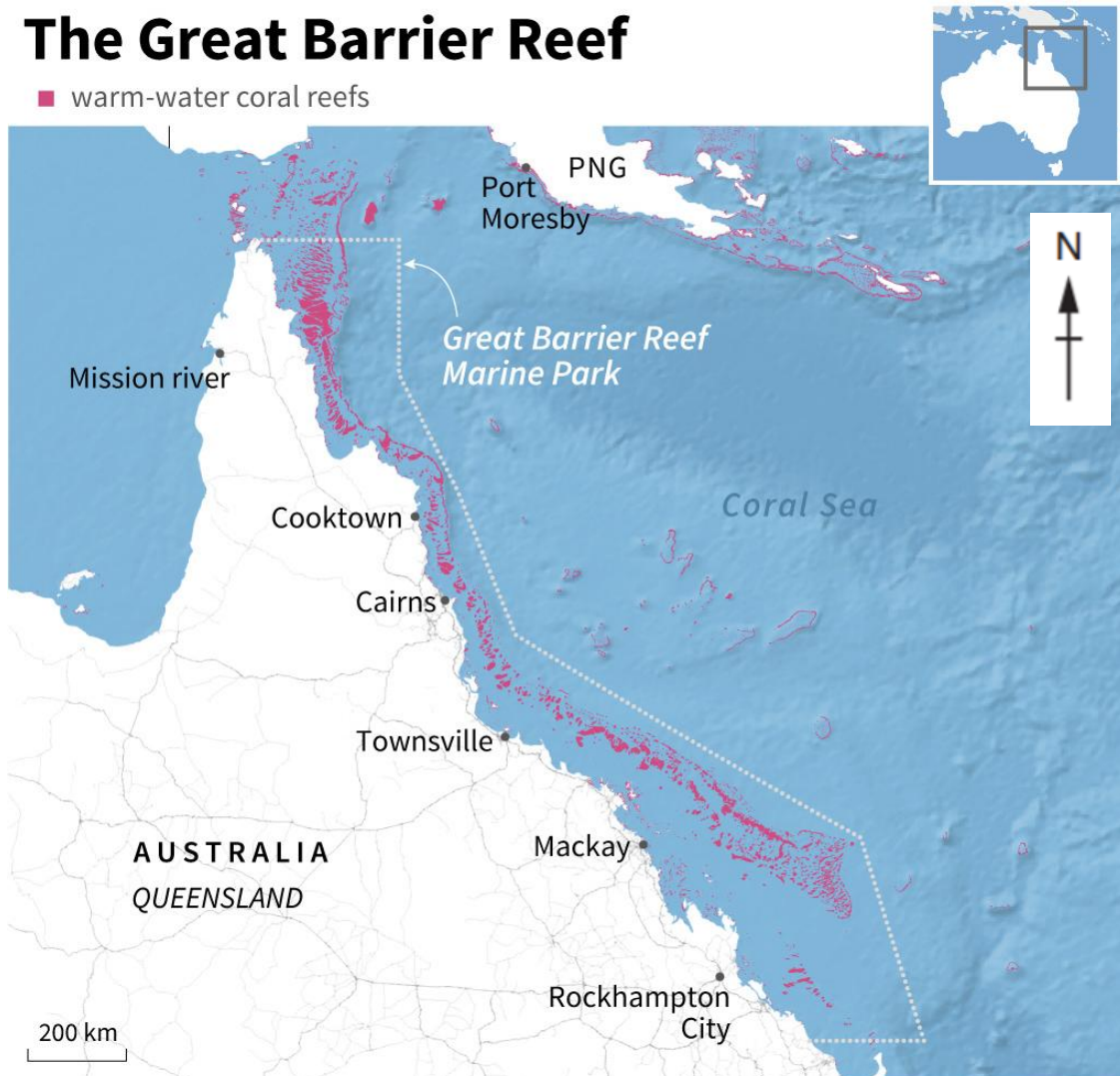


Fig. 3.3 for Question 3

Distribution of Coral Reefs in the Great Barrier Reef Marine Park

The Great Barrier Reef

■ warm-water coral reefs

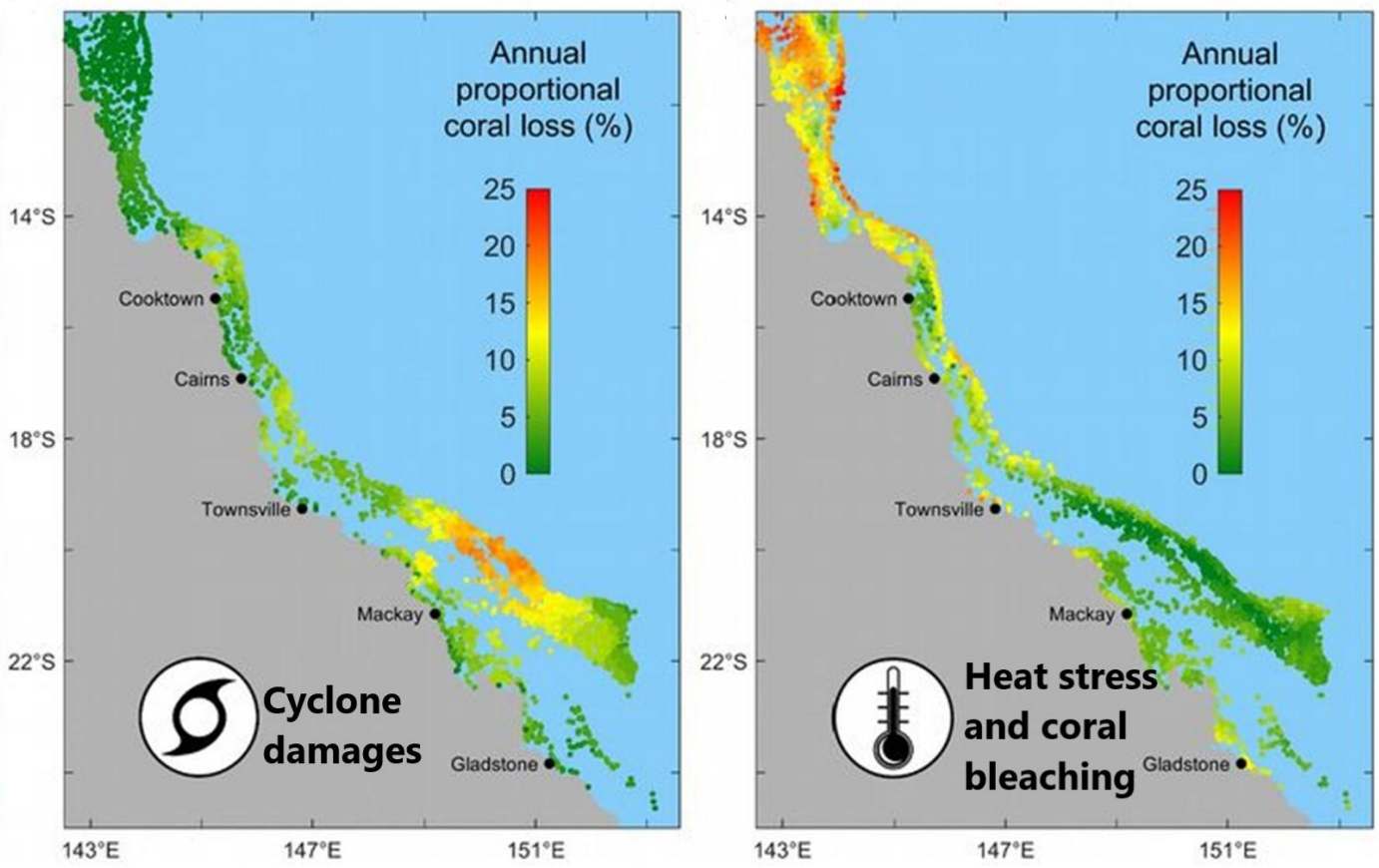


Map data: Global distribution of coral reefs, compiled by UNEP World Conservation Monitoring Centre

Source: gbrmpa.gov.au



Fig. 3.4 for Question 3



Copyright Acknowledgements:

Question 1	Fig. 1.1	© modified from https://www.ura.gov.sg/
	Fig. 1.2	© modified from https://tinyurl.com/2024-2279prelim-p1-fig1-2
	Table 1.1	© original source
	Fig. 1.3	© original source
	Table 1.2	© original source
	Fig. 1.4	© original source
Question 2	Fig. 2.1	© https://tinyurl.com/2024-2260gy-prelim-fig2-1
	Fig. 2.2	© https://tinyurl.com/2024-2279prelim-p1-fig2-2
	Fig. 2.3	© https://tinyurl.com/2024-2279prelim-p1-fig2-3
	Fig. 2.4	© original source
	Fig. 2.5	© https://tinyurl.com/2024-2279prelim-p1-fig2-5
Question 3	Fig. 3.1	© https://tinyurl.com/2024-2279prelim-p1-fig3-1
	Fig. 3.2	© modified from https://tinyurl.com/2024-2279prelim-p1-fig3-2
	Fig. 3.3	© modified from https://tinyurl.com/2024-2279prelim-p1-fig3-3
	Fig. 3.4	© modified from https://tinyurl.com/2024-2279prelim-p1-fig3-4