



CEDAR GIRLS' SECONDARY SCHOOL
Preliminary Examination 2024
Secondary Four

CANDIDATE
NAME

CLASS

INDEX
NUMBER

GEOGRAPHY

2279/01

Paper 1

21 August 2024

INSERT

1 hour 45 minutes

READ THESE INSTRUCTIONS FIRST

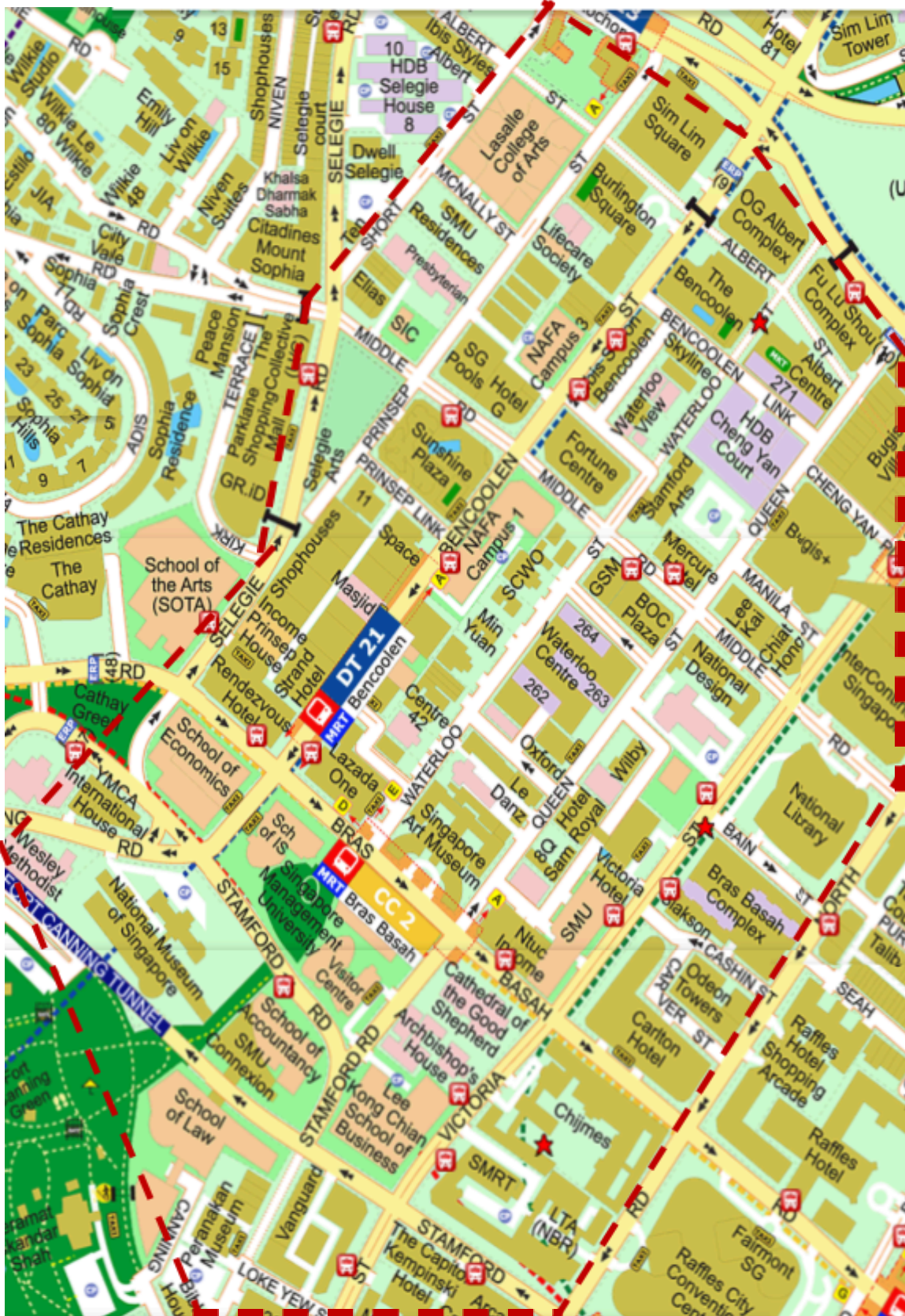
This Insert contains additional resources referred to in the questions.

[Turn over

This document consists of **7** printed pages and **1** blank page.

Fig. 1.1 for Question 1

Street map of Bras Basah, Bugis precinct (BBB)



■ ■ Bras Basah, Bugis precinct

Fig. 1.2 for Question 1

Tourist map of Bras Basah, Bugis precinct (BBB)



Fig. 1.3 for Question 1

Questionnaire

1. Gender:
 - ☐ Male
 - ☐ Female
2. Age group:
 - ☐ 21 – 30 years
 - ☐ 31 – 40 years
 - ☐ 41 – 50 years
 - ☐ 51 – 60 years
 - ☐ 61 years and above
3. Country of origin: _____
4. Type of accommodation for this trip:
 - ☐ Backpackers' hostel
 - ☐ 1 – 2 ☆ hotel
 - ☐ 3 – 4 ☆ hotel
 - ☐ 5 ☆ hotel
 - ☐ Others: (pls specify) _____
5. How many persons came with you on this trip?
 - ☐ 0
 - ☐ 1 – 2
 - ☐ 3 – 4
 - ☐ 5 or more (pls specify): _____
6. How did you make travel arrangements for this trip?
(You can ✓ more than one option.)
 - ☐ I bought the air ticket myself.
 - ☐ I booked accommodations myself.
 - ☐ I researched and planned the itinerary myself.
 - ☐ I followed recommendations from others* to plan my itinerary.

* Recommendations from others include friends, family, travel websites, travel gurus, travel guides, social media influencers, TV programmes

- ☐ I engaged services of a travel agent to make travel bookings and arrangements.
- ☐ I followed a pre-prepared travel itinerary prepared by others.

7. Here are 2 maps of Bras Basah, Bugis.

(To show respondents Figs. 1.1 and 1.2)

Which map do you find more useful for your exploration of the area?

- ☐ Street map
- ☐ Tourist map
- ☐ No maps. I prefer to walk around and discover for myself.

8. Why did you choose that option for Question 7?

~ Thank you & have a great time in Singapore! ~

Fig. 1.4 for Question 1

Collated results from 100 respondents

1. Gender:	
Male	Female
50	50

2. Age group (years):				
21 – 30	31 – 40	41 – 50	51 – 60	61 and above
20	20	20	20	20

3. Country of origin				
Indonesia	20		Japan	6
China	11		Philippines	5
Malaysia	8		Hong Kong	4
Australia	7		Rest of the world	33
India	6			

4. Type of accommodation for this trip:			
Backpackers' hostel	1 – 2 ☆ hotel	3 – 4 ☆ hotel	5 ☆ hotel
17	20	24	13
Others:	Airbnb (3), Staying in relative/ friend's house (14), cruise ship (9)		

5. How many persons came with you on this trip?			
0	1 – 2	3 – 4	5 or more
24	38	31	7

6. How did you make travel arrangements for this trip?	Total ✓
I bought the air ticket myself.	78
I booked accommodations myself.	66
I researched and planned the itinerary myself.	47
I followed recommendations from others to plan my itinerary.	93
I engaged services of a travel agent to make travel bookings and arrangements.	22
I followed a pre-planned travel itinerary prepared by others.	11

7. Which map do you find more useful for your exploration of the area?	Total ✓
Street map	29
Tourist map	38
No maps. I prefer to walk around and discover for myself.	33

8. Why did you choose that option for Question 7?	
I like to explore the place freely.	
Friend/ family who is Singaporean/ works/ studies here is bringing me around.	
Singapore is very safe.	
Hard to get lost in Singapore.	
Easy to find my way around Singapore.	
Easy to ask for directions as I can find people I can communicate with.	
The tourist map shows the attractions more clearly.	
Don't want to miss anything interesting.	

Fig. 3.1 for Question 3

Average annual precipitation for Washington, USA

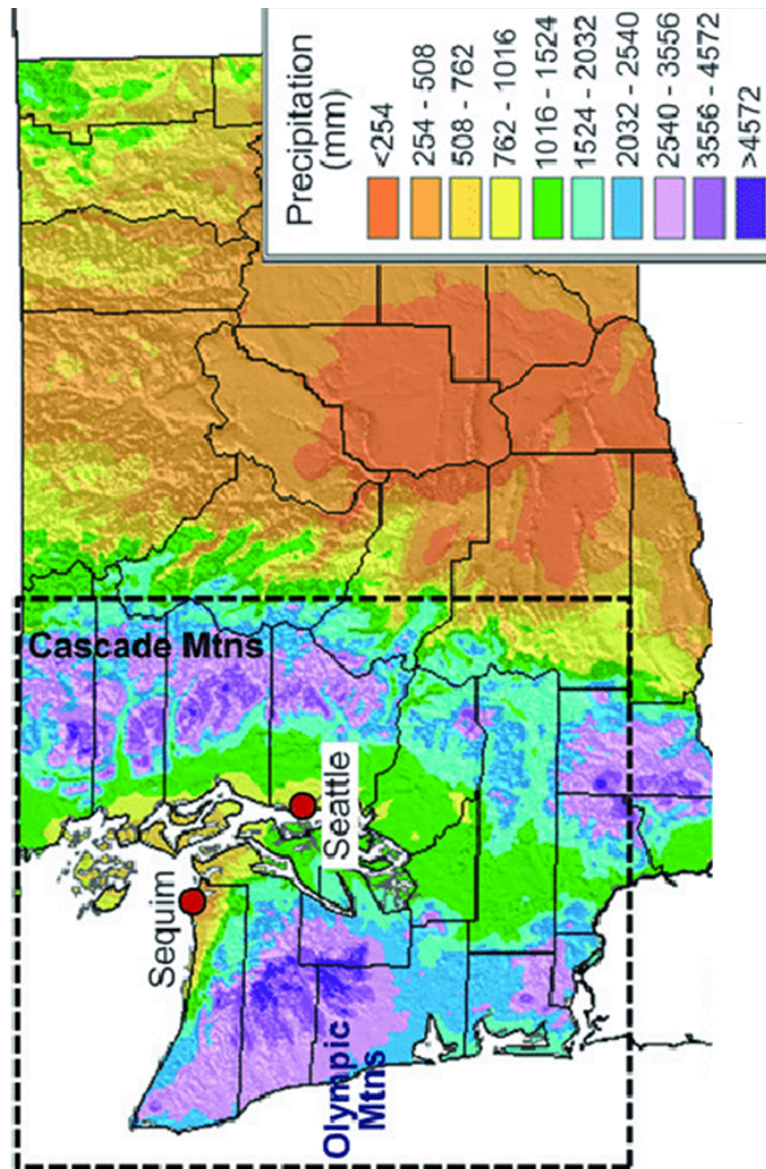
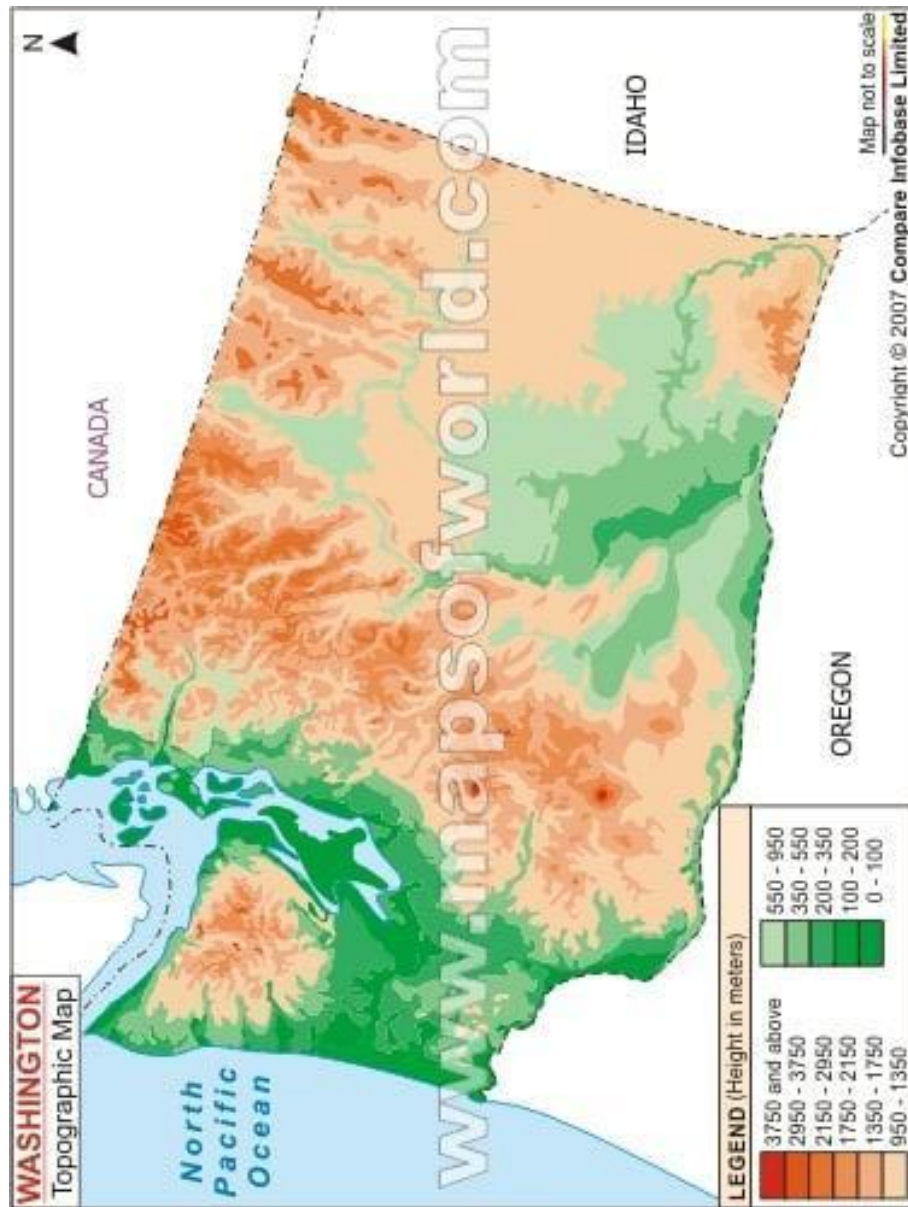


Fig. 3.2 for Question 3

Topographic map of Washington, USA



BLANK PAGE

Copyright Acknowledgements:

Question 1	Figure 1.1	© https://www.streetdirectory.com/sg/bras-basah-complex-victoria-street-b01019/23134_1.html
	Figure 1.2	© https://www.nhb.gov.sg/brasbasahbugis/-/media/bbb/bras-basahbugis-pocket-guide-2017.pdf?la=en
Question 2	Table 2.1	© https://www.semanticscholar.org/paper/Impact-of-direct-flights-on-tourist-volume%3A-Case-of-Cetin-Akova/50f1436d6dbac12d9132ce7245ed8dd9b50d2de7
	Figure 2.1	© https://interfacetourism.fr/en/2017/12/06/impact-direct-flights-tourism/
Question 3	Figure 3.1	© https://www.researchgate.net/figure/Average-annual-precipitation-mm-see-color-key-for-Washington-from-1971-to-2000-using_fig1_257920561
	Figure 3.2	© https://www.mapsofworld.com/usa/states/washington/washington-topo-map.html
	Figure 3.3	© https://www.researchgate.net/publication/291797677_Astronomical_theory_and_orbital_forcing

[Turn over



Fig. 1.2 for Question 1

Thematic tourist map of BBB based on
'Racial and Religious Harmony'



