

Name	Class	Register Number

GEOGRAPHY (2279/02)

24/S4PRE/GE2

Paper 2

Monday

26 August 2024

1 hour 45 minutes

VICTORIA SCHOOL VICTORIA SCHOOL VICTORIA SCHOOL VICTORIA SCHOOL VICTORIA SCHOOL VICTORIA SCHOOL VICTORIA SCHOOL VICTORIA SCHOOL VICTORIA SCHOOL VICTORIA SCHOOL VICTORIA SCHOOL VICTORIA SCHOOL VICTORIA SCHOOL VICTORIA SCHOOL
VICTORIA SCHOOL VICTORIA SCHOOL VICTORIA SCHOOL VICTORIA SCHOOL VICTORIA SCHOOL VICTORIA SCHOOL VICTORIA SCHOOL VICTORIA SCHOOL VICTORIA SCHOOL VICTORIA SCHOOL VICTORIA SCHOOL VICTORIA SCHOOL VICTORIA SCHOOL VICTORIA SCHOOL
VICTORIA SCHOOL VICTORIA SCHOOL VICTORIA SCHOOL VICTORIA SCHOOL VICTORIA SCHOOL VICTORIA SCHOOL VICTORIA SCHOOL VICTORIA SCHOOL VICTORIA SCHOOL VICTORIA SCHOOL VICTORIA SCHOOL VICTORIA SCHOOL VICTORIA SCHOOL VICTORIA SCHOOL
VICTORIA SCHOOL VICTORIA SCHOOL VICTORIA SCHOOL VICTORIA SCHOOL VICTORIA SCHOOL VICTORIA SCHOOL VICTORIA SCHOOL VICTORIA SCHOOL VICTORIA SCHOOL VICTORIA SCHOOL VICTORIA SCHOOL VICTORIA SCHOOL VICTORIA SCHOOL VICTORIA SCHOOL



VICTORIA SCHOOL

**PRELIMINARY EXAMINATION
SECONDARY FOUR**

Insert

READ THESE INSTRUCTIONS FIRST

This insert contains references referred to in the questions.

Setter: Mr Heng Yan Kai and Mr Kelvin Koh

Fig 1.2 for Question 1

Map of Industrial Estates, Business Nodes, Institutes of Higher Learning, Airports and Ports in Singapore

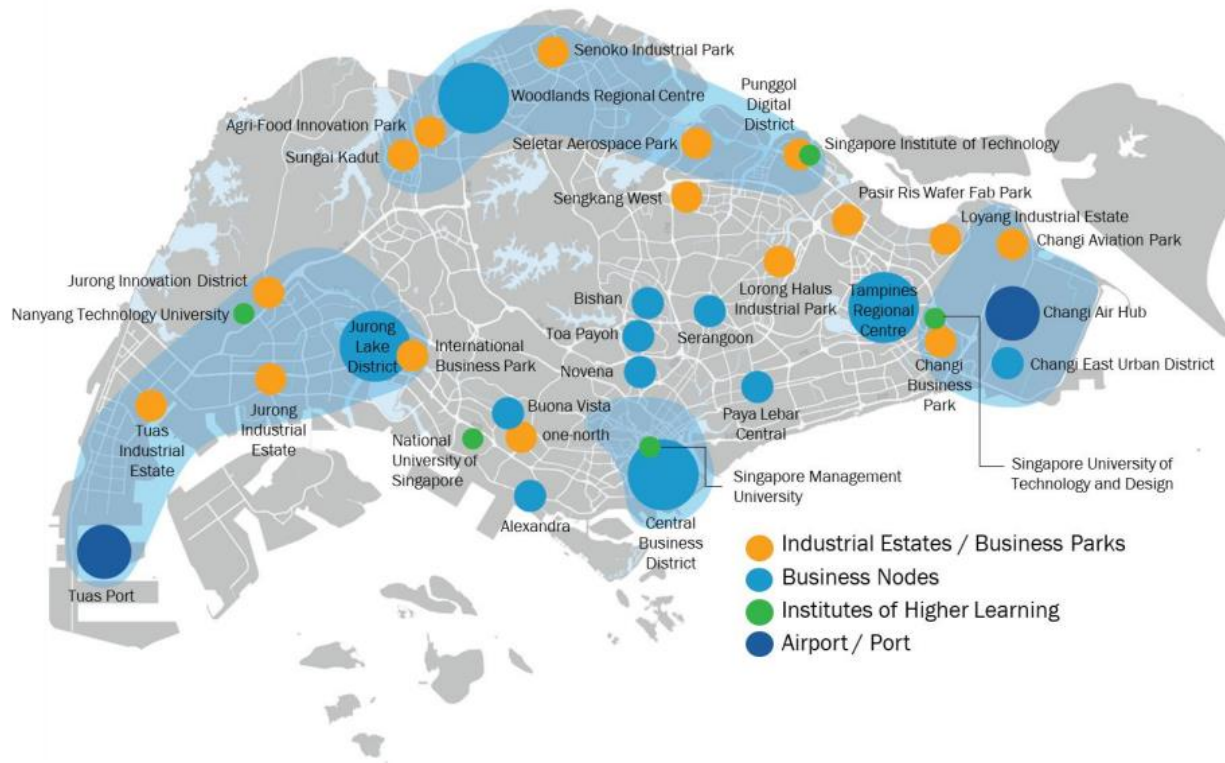
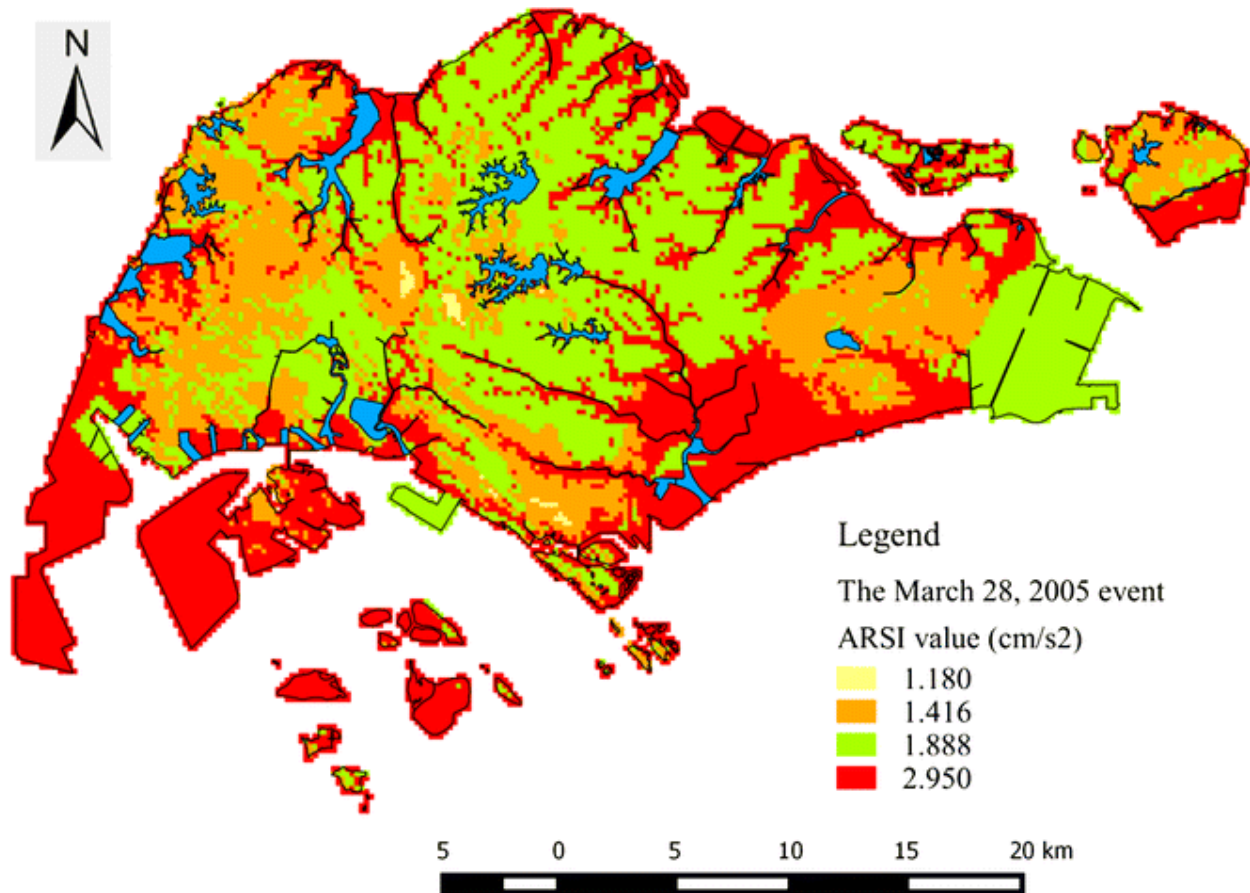


Fig 3.1 for Question 3

ARSI map of Singapore



*Average Response Spectrum Intensity (ARSI) is a way of communicating general level of shaking a structure might face during an earthquake. The higher the value, the stronger the shaking of a structure built in the area in the event of an earthquake.

Copyright acknowledgements

- Fig 1.1 <https://www.propertyguru.com.sg/property-management-news/2019/12/185330/hdb-raises-solar-target-for-2030-to-540mwp>
- Fig 1.2 https://lkyspp.nus.edu.sg/docs/default-source/ips/forum-2_lim-eng-hwee.pdf
- Fig 1.3 <https://www.todayonline.com/singapore/improved-flood-prevention-measures-around-orchard-road-month>;
<https://www.theonlinecitizen.com/2021/08/30/over-s2-billion-already-spent-has-it-paid-off/>
- Fig 2.1 <https://www.nps.gov/subjects/geology/plate-tectonics-evidence-of-plate-motions.htm>
- Fig 2.2 https://www.researchgate.net/figure/Tsunamis-that-caused-more-than-100-deaths-by-year-in-Japan_fig6_259172075
- Fig 3.1 https://www.researchgate.net/figure/The-ARSI-map-of-Singapore-for-the-March-28-2005-earthquake-event-N-S-direction-based_fig3_311394397
- Fig 3.2 <https://redcross.sg/component/content/article/166-clare.html?catid=34:local-services&Itemid=207>
- Fig 3.3 <https://rosa.smu.edu.sg/sites/rosa.smu.edu.sg/files/Briefs/Singapore%20Resilience%20Study.pdf>