



ANDERSON JUNIOR COLLEGE

JC2 H2 Geography Preliminary Examination (2016)

H2 GEOGRAPHY

9730/ 01

Paper 1 Physical Geography

14 September 2016

INSERT

3 hours

READ THESE INSTRUCTIONS FIRST

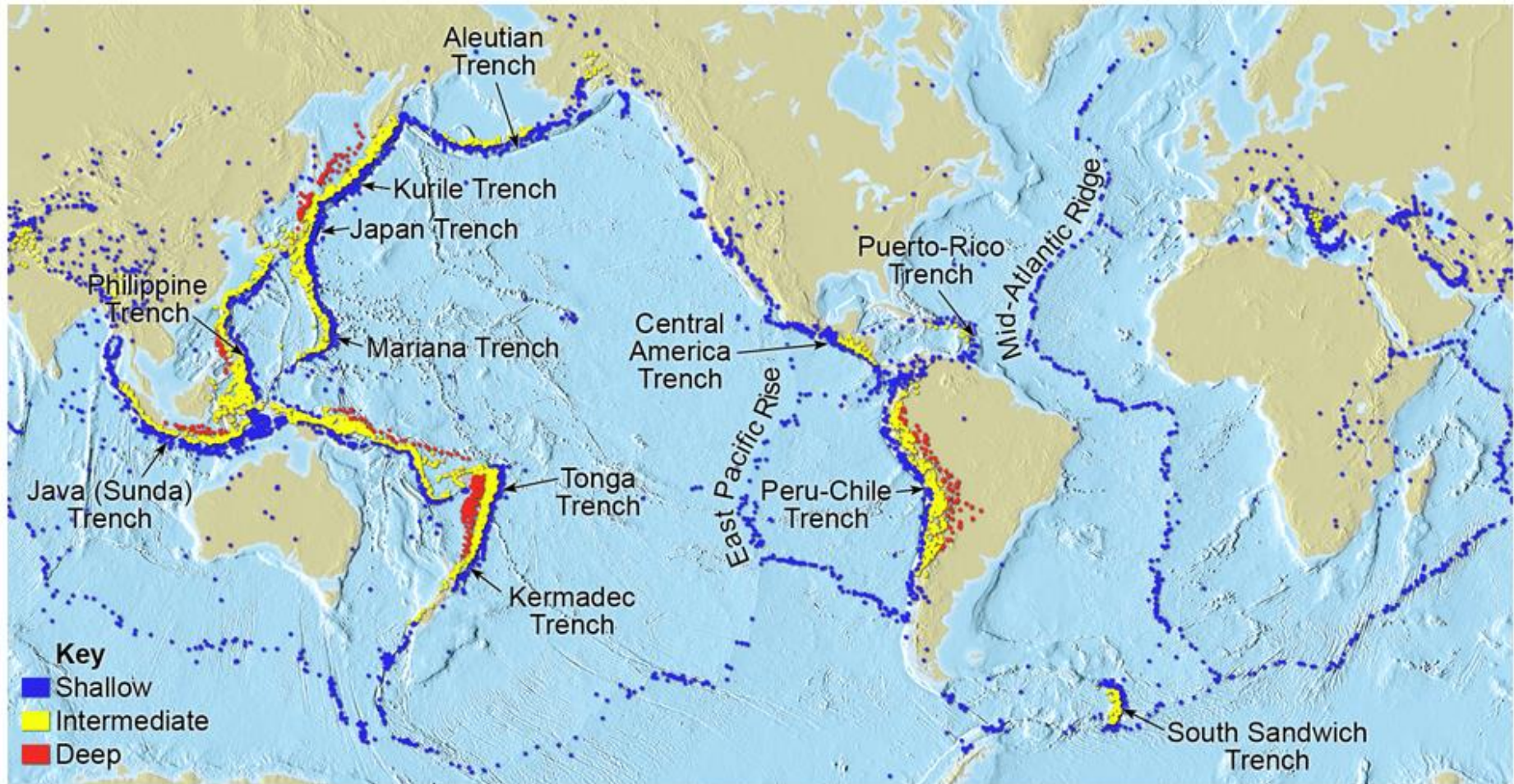
The Insert contains all the Figures referred to in the questions.

This question paper consists of 6 printed pages.

[Turn Over]

Fig. 1A for Question 1

Global Distribution of Earthquakes



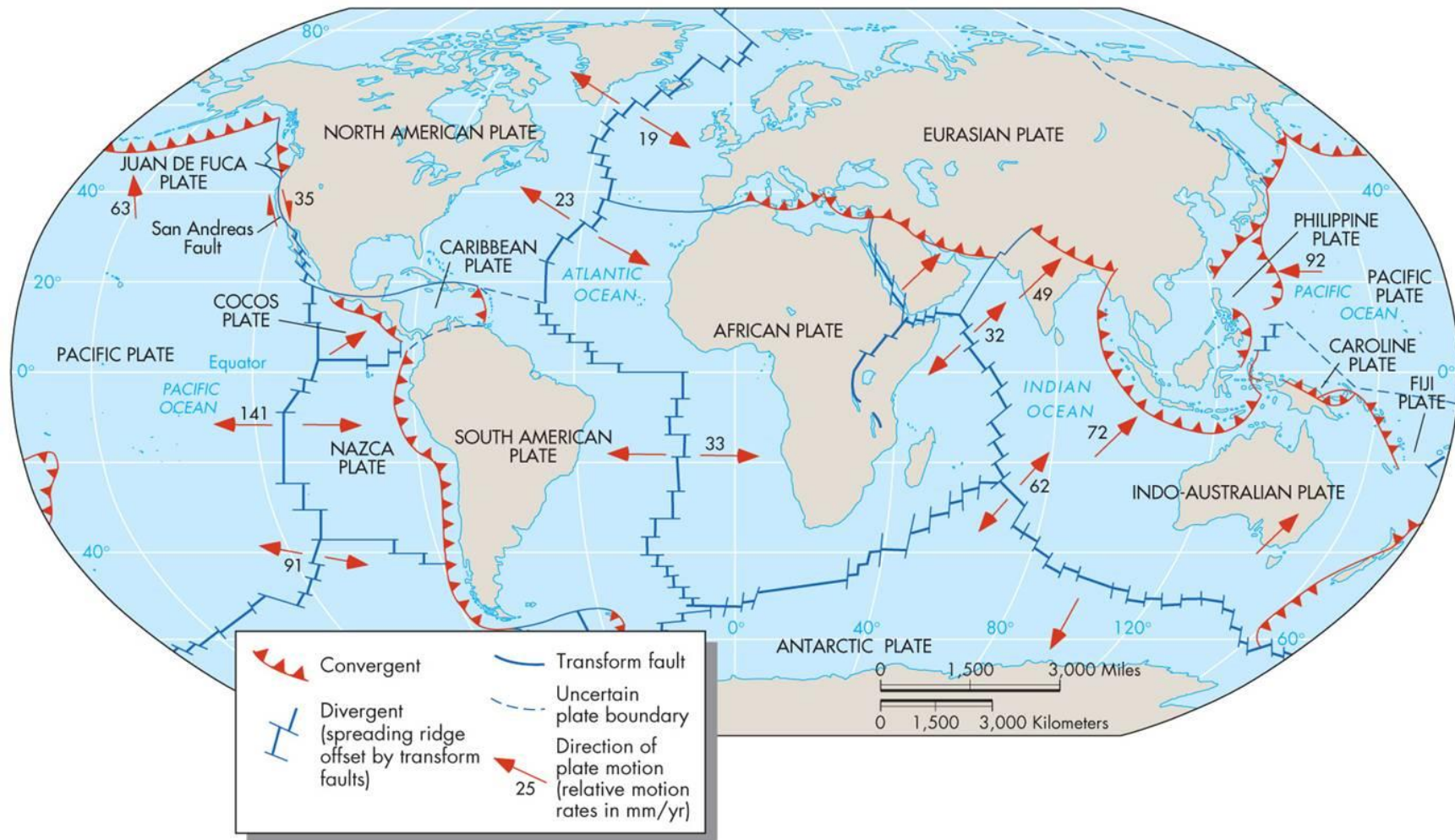
Distribution of shallow-, intermediate-, and deep-focus earthquakes. (Data from NOAA)

© 2009 Tasa Graphic Arts, Inc.

Source: http://4.bp.blogspot.com/-xadG1zjn5Oo/UTl2plBDYnI/AAAAAAAAARE/MIGl8qld1O4/s1600/Earthquake_Depths.jpg

Fig. 1B for Question 1

Tectonic Plate Boundaries

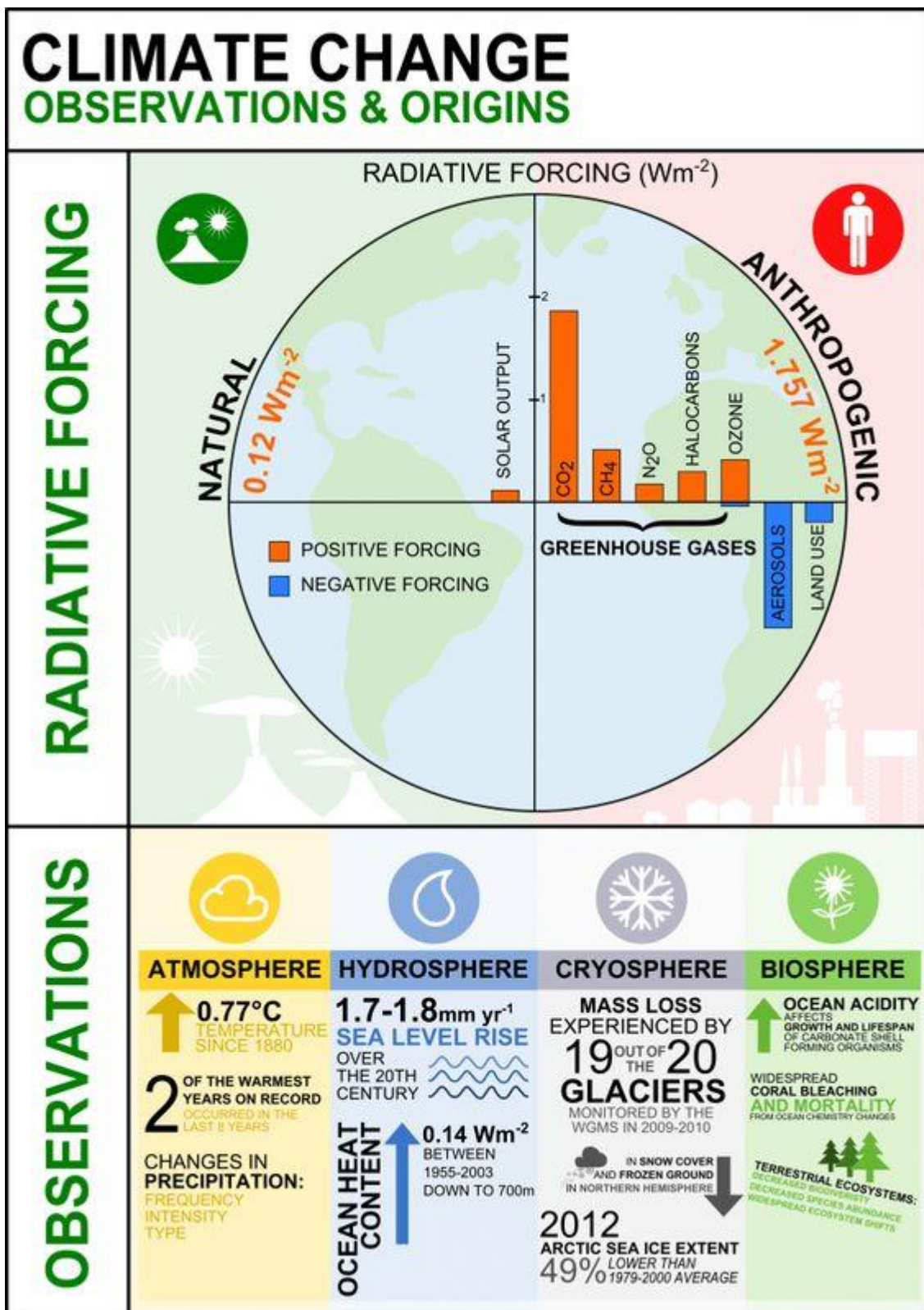


Copyright © 2008 Pearson Prentice Hall, Inc.

Source: http://www2.sunysuffolk.edu/hornj/ESC102_PlatesAssgntmt_Fig2.jpg

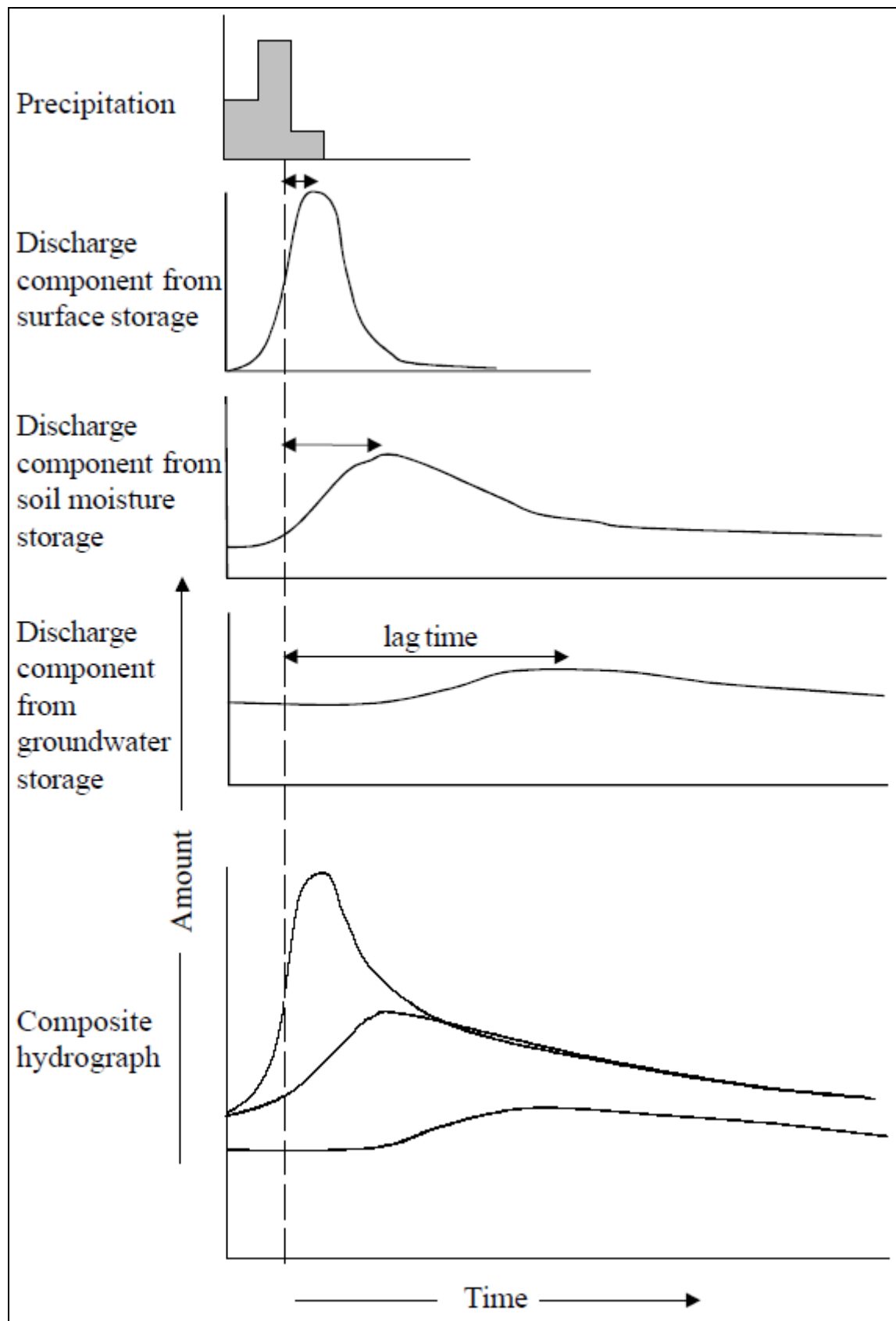
Fig. 2 for Question 2

Infographic on observations of origins and effects of climate change



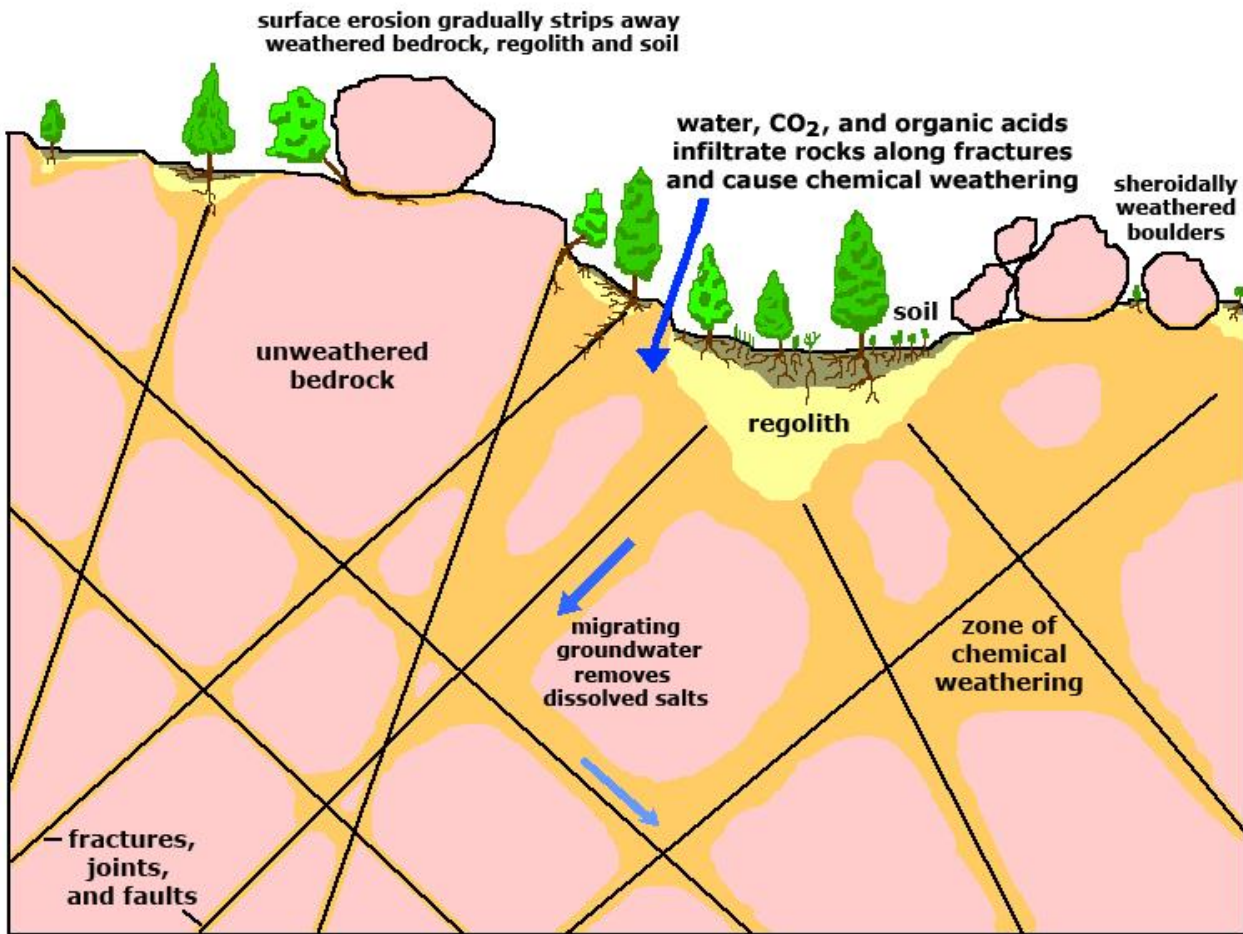
Source: <http://1.wp.com/herohealthroom.com/wp-content/uploads/2013/10/key-graphic-final.png?resize=723%2C1024>

Fig. 3 for Question 3



Source: Geo Factsheet, Number 83, January 2000

Fig. 4 for Question 4



Source: <http://geologycafe.com/images/weathering2.jpg>