



**National Junior College**  
**SH2 Preliminary Examination 2016**

**GEOGRAPHY**

**9730/02**

**Higher 2**  
**INSERT**

**3 Hours**  
**30 August 2016**

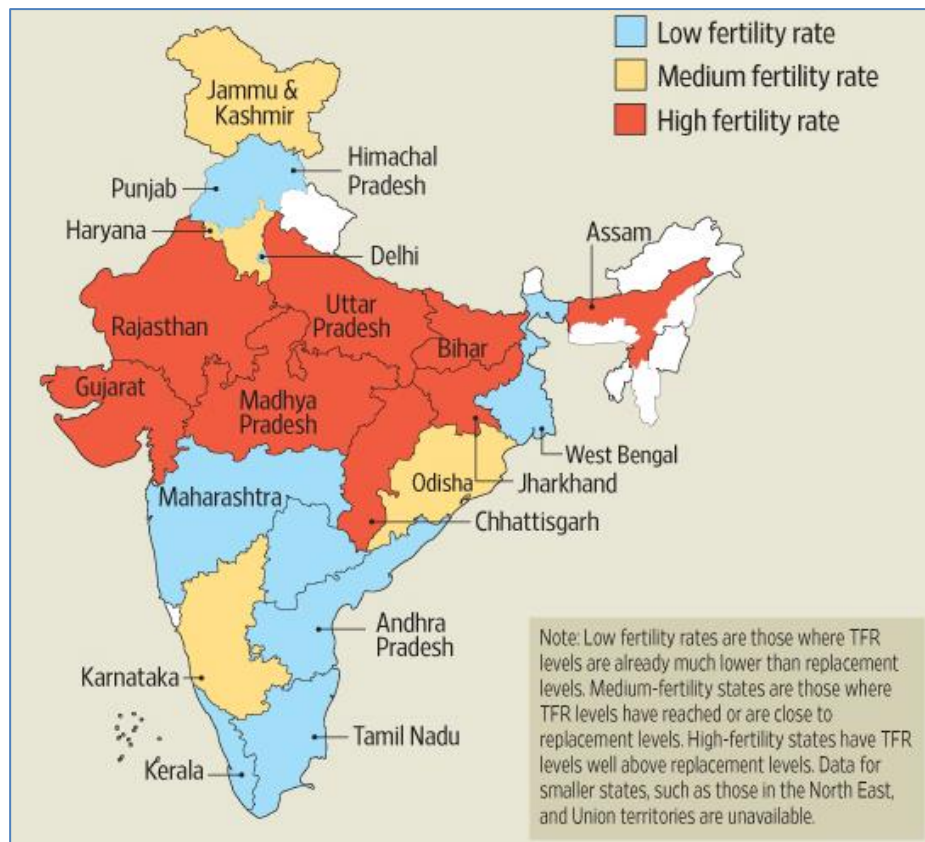
This insert contains all the Tables, Figures and Photographs referred to in the question paper.

This document consists of **6** printed pages, including this cover page.

**Fig. 1 for Question 1**  
**Self-Reported Happiness and Human Development Index (as of 2013)**



**Fig. 2 for Question 2**  
**Fertility rates across major Indian states (as of 2013)**



**Table. 1 for Question 2**  
**Female literacy rates across selected Indian states (as of 2013)**

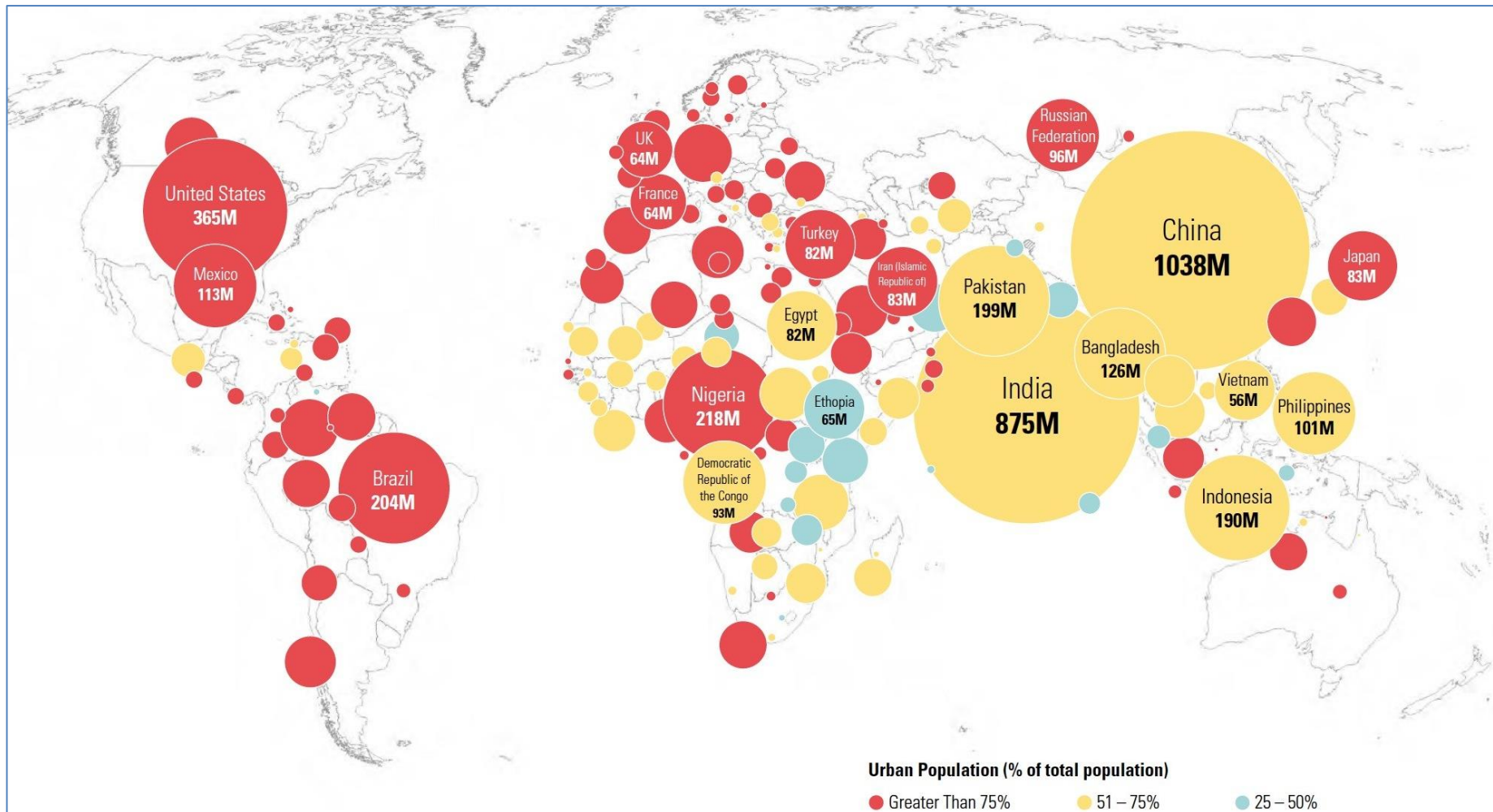
State	Female literacy rate (%)
Assam	67.27
Delhi	80.93
Gujarat	70.73
Himachal Pradesh	76.6
Jammu & Kashmir	58.01
Jharkhand	56.21
Karnataka	68.13
Kerala	91.98
Punjab	71.34
Uttar Pradesh	59.26

**Photograph A for Question 3**  
**Slum neighbourhood of La Cava and gated suburban community in Buenos Aire, Argentina (2003)**





**Fig. 4 for Question 4**  
**Projected urban populations of selected countries in 2050**



**Table 2 for Question 4**  
**Projected Gross Domestic Product (GDP) in Purchasing Power Parity (PPP)**  
**terms for selected countries in 2050**

<b>Country</b>	<b>Projected GDP at PPP (US\$ billion)</b>
China	61,079
India	42,205
United States of America	41,384
Indonesia	12,210
Brazil	9,164
United Kingdom	5,744
France	5,207
Pakistan	4,253
Philippines	3,516
Bangladesh	3,367