

Name	Form Class	Index No.
------	------------	-----------



**ANG MO KIO SECONDARY SCHOOL
END-OF-YEAR EXAMINATION 2023
SECONDARY 3 EXPRESS**

2279

GEOGRAPHY

4 October 2023

1 hour 45 minutes

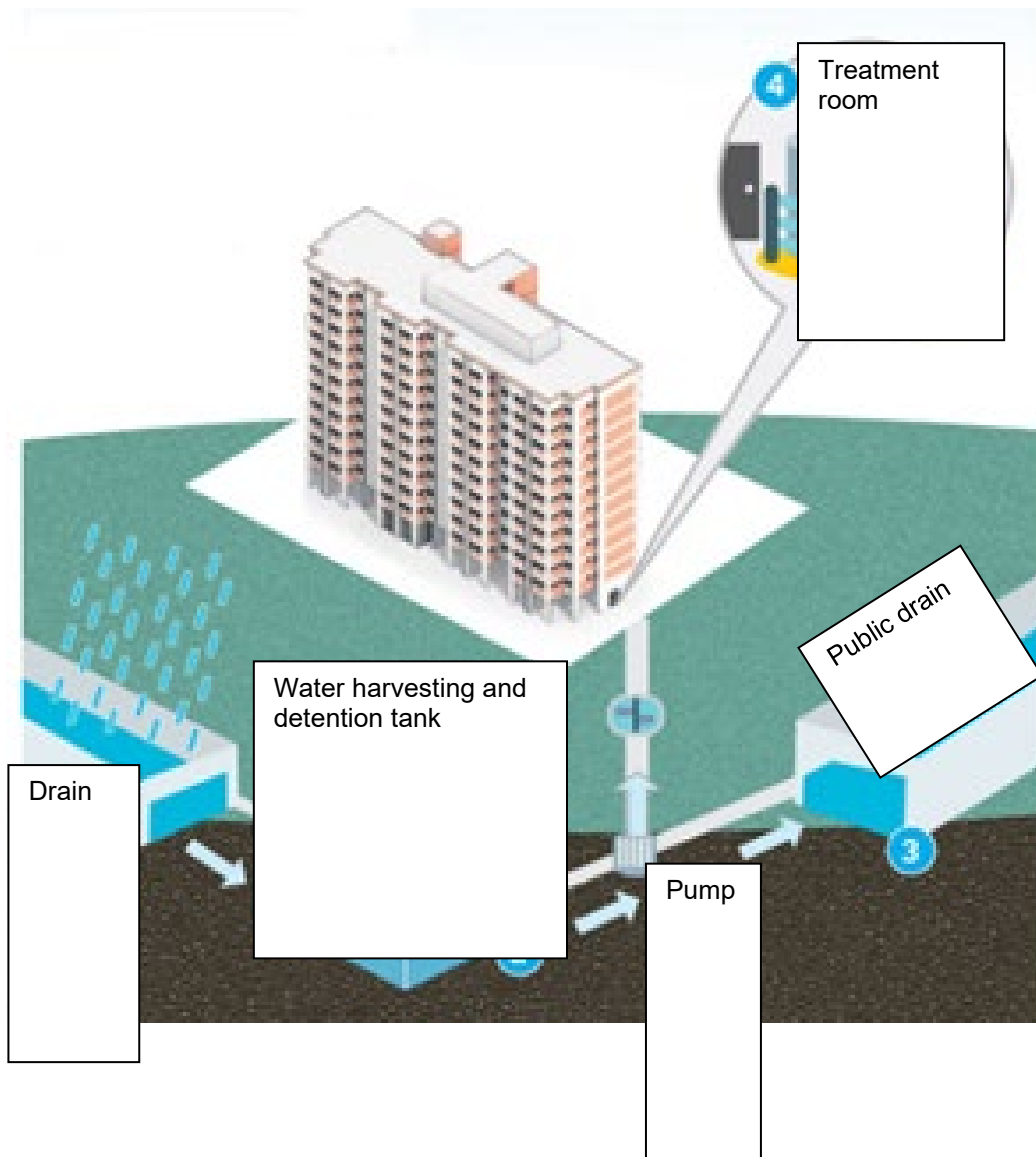
Insert

READ THESE INSTRUCTIONS FIRST

The Insert contains Fig. 1, Fig. 2 and Fig. 3 for Question 1, Fig. 4A, 4B and Photograph A for Question 2.

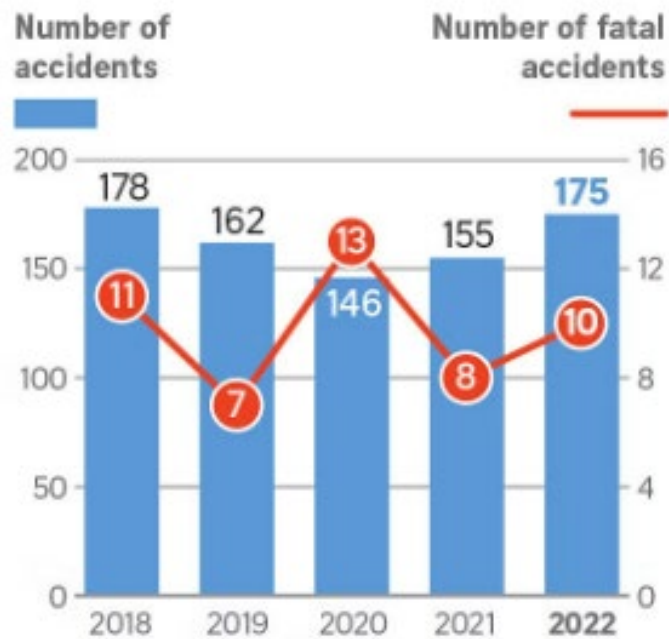
This document consists of 5 printed pages and 1 blank page.

[Turn Over

Water harvesting at a HDB block**Fig. 1 for Question 1**

Drink Driving in Singapore

Fig. 2 for Question 1



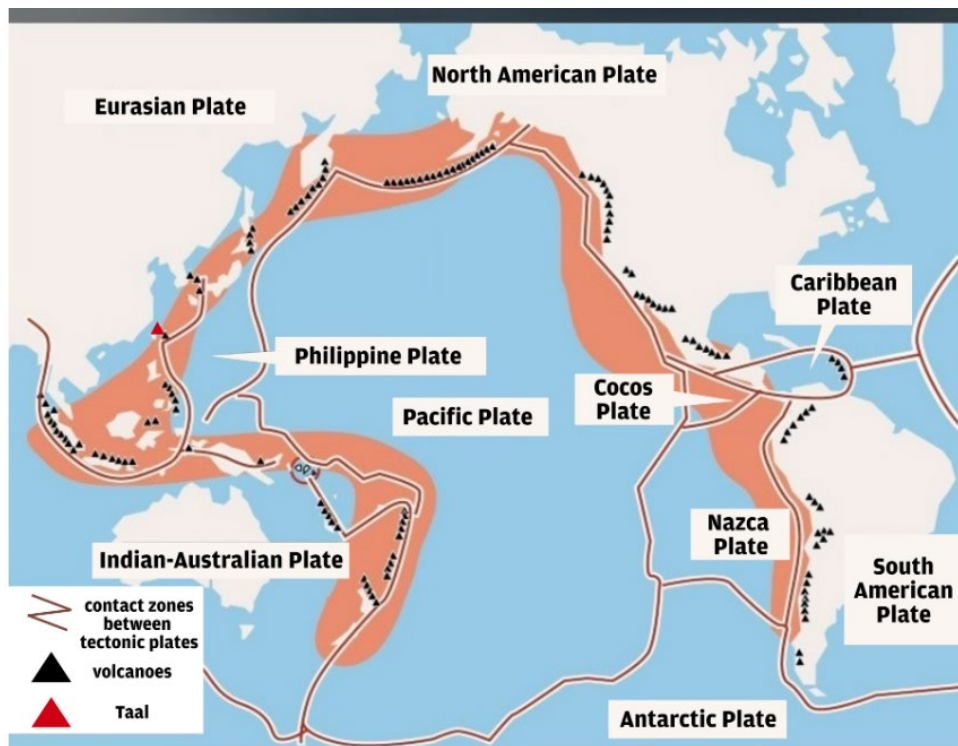
NEA poster on recycling

Fig. 3 for Question 1



Location of Taal Volcano, Philippines.

Fig. 4A for Question 2



Adapted information on an earlier Taal Volcanic Eruption in 1965

Fig. 4B for Question 2

A moderately violent explosive eruption of Taal Volcano, Philippines, occurred from 28 to 30 September, 1965. The main phreatic explosions, which were preceded by ejection of basaltic lava, opened a new crater 1.5 km long and 0.3 km wide on the southwest side of Volcano Island in Lake Taal. The clouds that formed during the explosive eruption rose to heights of 15 to 20 km and deposited fine ash as far as 80 km west of the vent.

Houses near Taal volcano's crater from the volcano's eruption.

Photograph A



END OF INSERT

BLANK PAGE