



Catholic Junior College
JC1 Mid-Year Examination
Higher 1

GEOGRAPHY

8834/01

Paper 1
Insert

18 May 2023
1 Hour 15 Mins

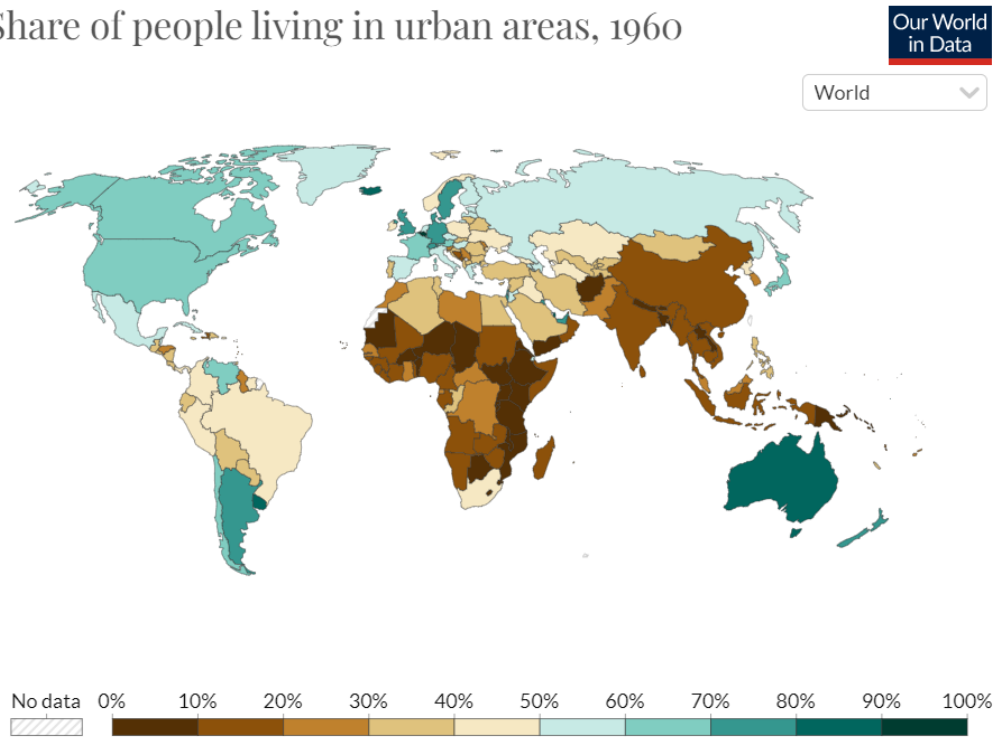
READ THESE INSTRUCTIONS FIRST

This Insert contains all the Resources referred to in the questions.

Resource 1 for Question 1

Share of People Living in Urban Areas (1960 and 2020)

Share of people living in urban areas, 1960

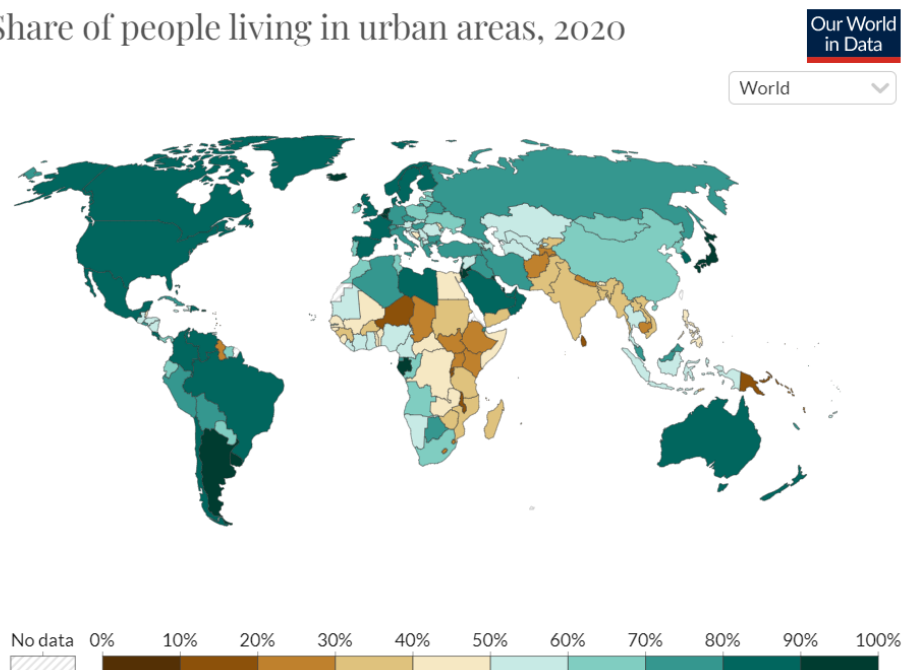


Source: UN Population Division (via World Bank)

OurWorldInData.org/urbanization • CC BY

Note: Urban populations are defined based on the definition of urban areas by national statistical offices.

Share of people living in urban areas, 2020



Source: UN Population Division (via World Bank)

OurWorldInData.org/urbanization • CC BY

Note: Urban populations are defined based on the definition of urban areas by national statistical offices.

Resource 2 for Question 1

Photograph of Kibera Slum in Nairobi, Kenya



Resource 3 for Question 1

Excerpt from an article 'Why residents of Kibera Slum are rejecting new housing plans'

The flagship of the new apartments built for the slum dwellers rises up behind Kibera, a multi-storied concrete building called The Promised Land by local residents. The apartments inside are heavily subsidised and provide the formalised services that slums lack like water, sanitation and electricity.

But from the launch of the project in 2003, there has been a nagging problem. Residents of the Kibera slums who were relocated to The Promised Land began leaving their new homes and moving back into Kibera. Nairobi's middle class swooped in, searching for affordable housing in a city with skyrocketing rents. Many secured apartments in the new buildings through the informal systems of bribery.

And many Kibera residents who were given apartments through the programme saw a business opportunity and rented their flats to middle class tenants at four and five times the subsidised rate. Then they moved back to the slum with extra money in their pocket.

Other residents said they were frustrated by the unreliable services in the new apartments and flat out left. In an interview with a resident living in The Promised Land, she raised that she hasn't had water in her house for three weeks. Ironically, some are moving back into the slum for better water and sanitation.

Excerpt taken from: <https://www.one.org/international/blog/why-residents-of-kibera-slum-are-rejecting-new-housing-plans/>