



ST. MARGARET'S SCHOOL (SECONDARY)

End-of-Year Examinations 2023

CANDIDATE NAME

CLASS

--	--	--

REGISTER NUMBER

--	--

COMBINED HUMANITIES

2260/02

Paper 2 Geography

5 October 2023

Secondary 3 Express

1 hour 45 minutes

INSERT

READ THESE INSTRUCTIONS FIRST

This insert contains additional resources referred to in the questions.

[Turn over

This document consists of 8 printed pages.
Fig. 1.1 for Question 2

Difference in distance, travel time and project cost between the two proposed alignments of the Cross Island MRT Line

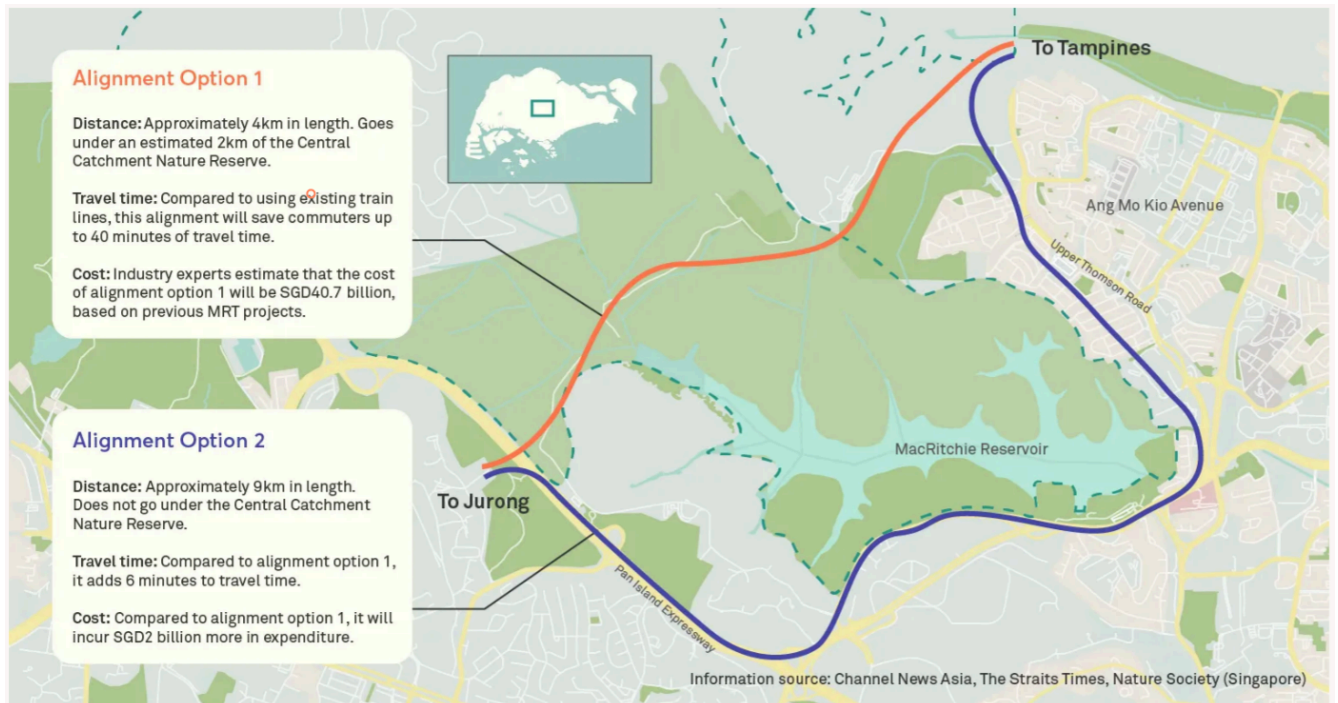


Fig. 1.2 for Question 2

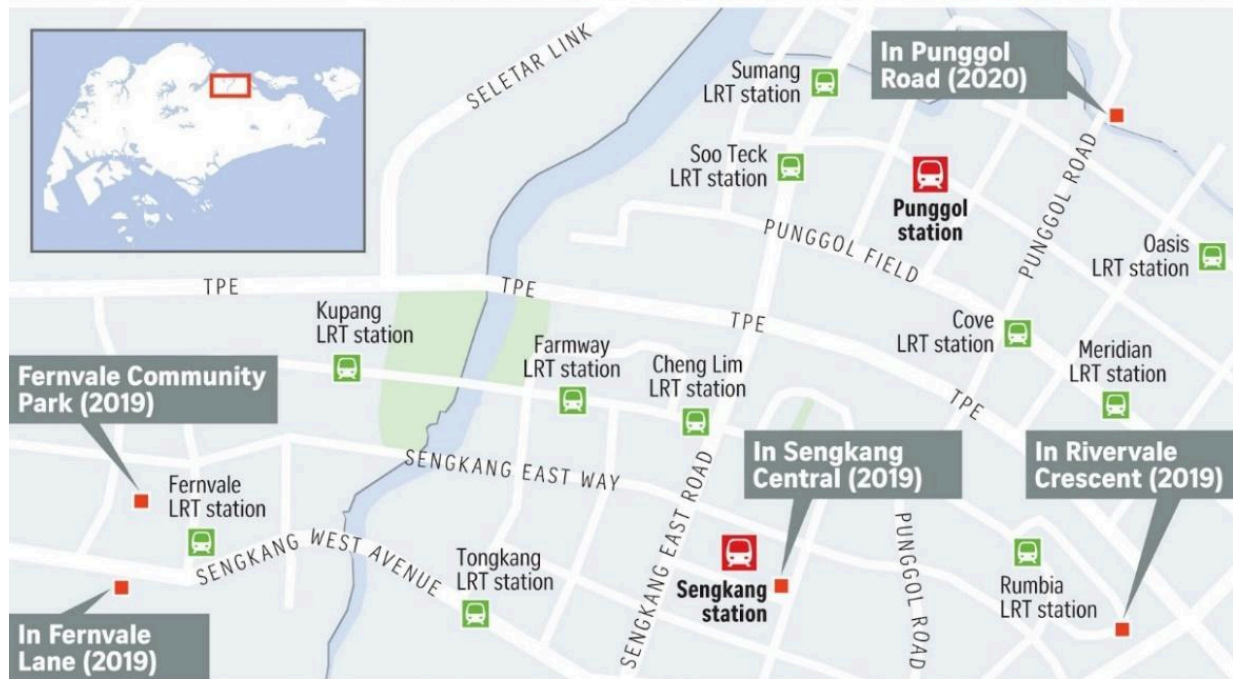
Sign put up by National Parks Board, Singapore



Fig. 1.3 for Question 2

Location of 5 large childcare centres in two housing estates, Sengkang and Punggol

Upcoming large childcare centres



Source: Early Childhood Development Agency STRAITS TIMES GRAPHICS

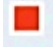



Legend	
	Large childcare centre
	MRT station
	LRT station
	Roads

Fig. 1.4 for Question 2
Bishan-Ang Mo Kio Park



Fig. 1.6 for Question 2

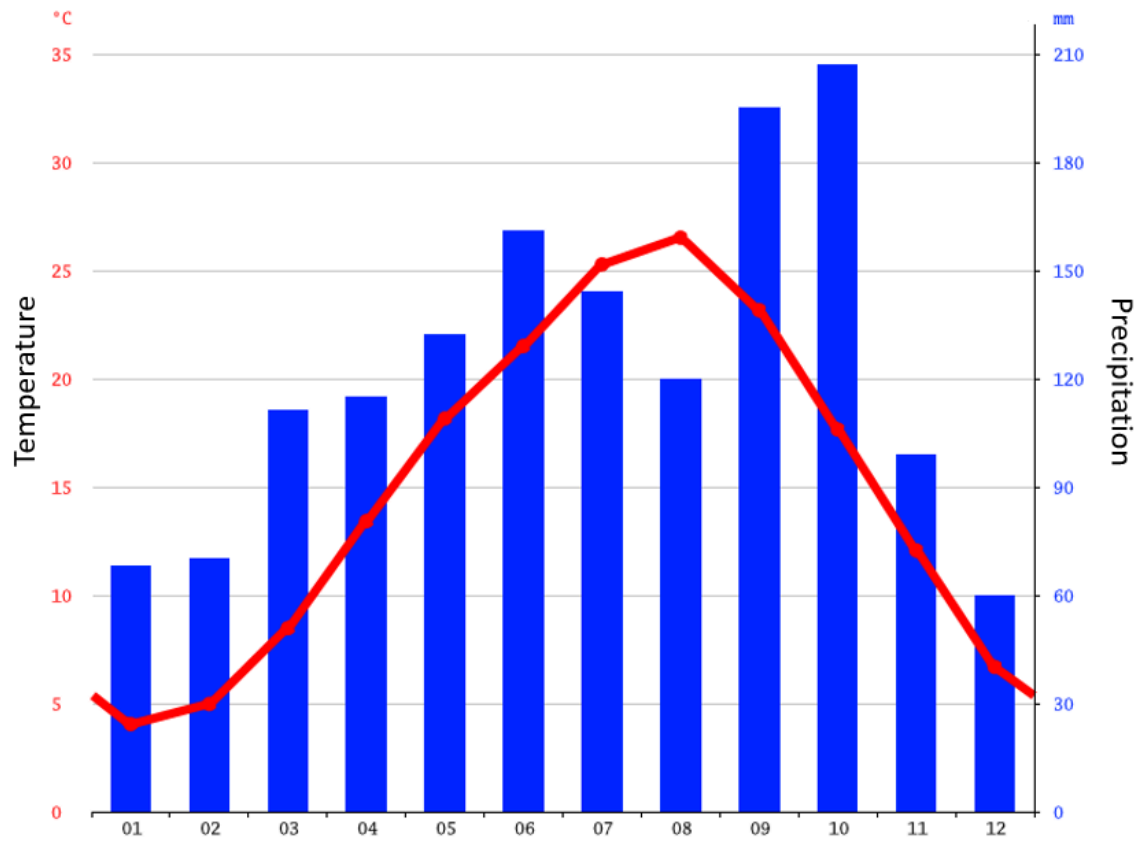


Fig. 1.7 for Question 2



Fig. 1.8 for Question 3

Climograph of Tokyo, Japan



Month	Jan	Feb	Mar	Apr	May	Jun	Jul	Aug	Sep	Oct	Nov	Dec
Average temperature (°C)	4	5	8.5	13.4	18.2	21.5	25.3	26.5	23.2	17.7	12.1	6.7
Precipitation (mm)	68	70	111	115	132	161	144	120	195	207	99	60