



RAFFLES INSTITUTION
Preliminary Examinations 2016

H2 GEOGRAPHY

9730/01

Paper 1 Physical Geography

Duration: 3 hours

INSERT 1

READ THESE INSTRUCTIONS FIRST

This Insert contains all the tables and figures referred to in the question paper.

INSERT

Fig. 1 for Question 1

Activities occurring along the tectonic plate margins

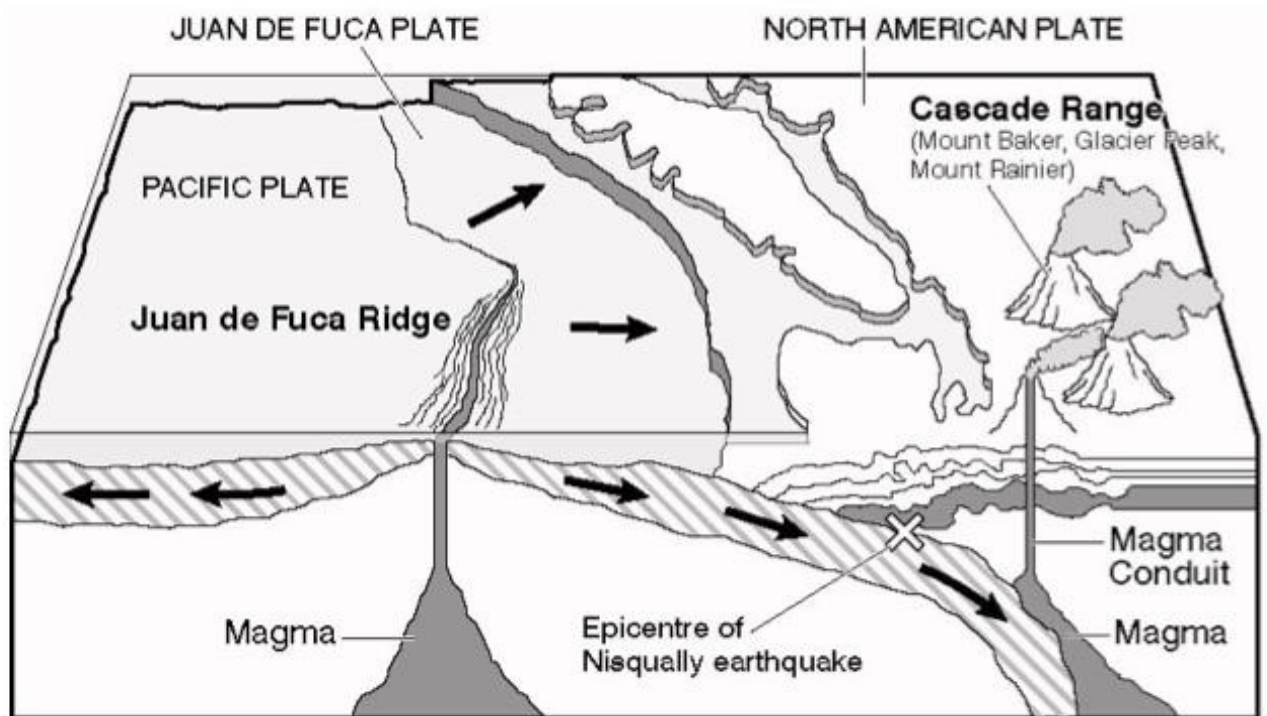


Fig. 2A for Question 2

Earth's radiation balance for one year

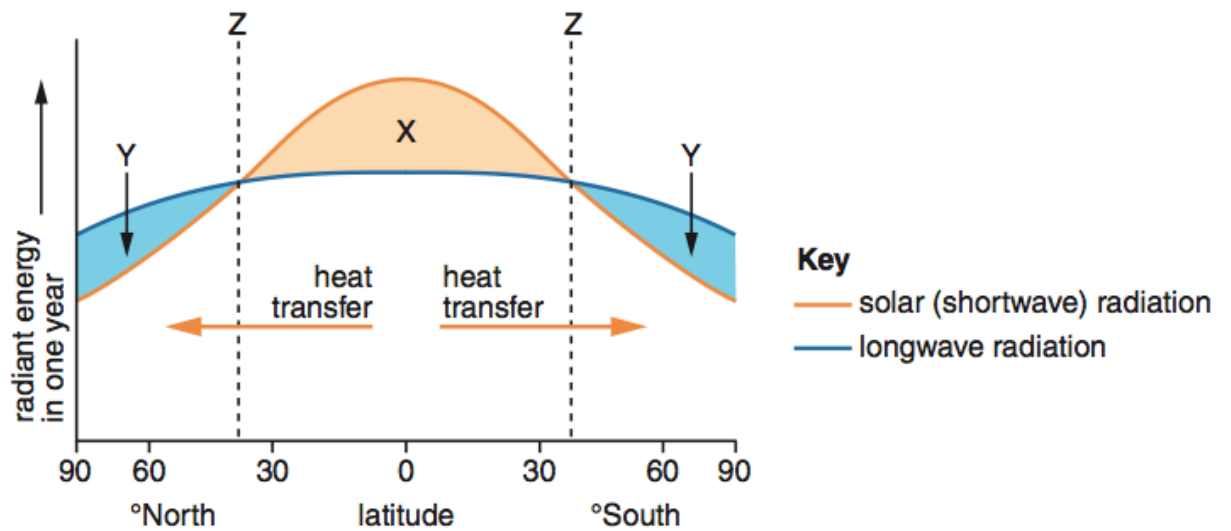


Fig. 2B for Question 2

Model of atmospheric circulation

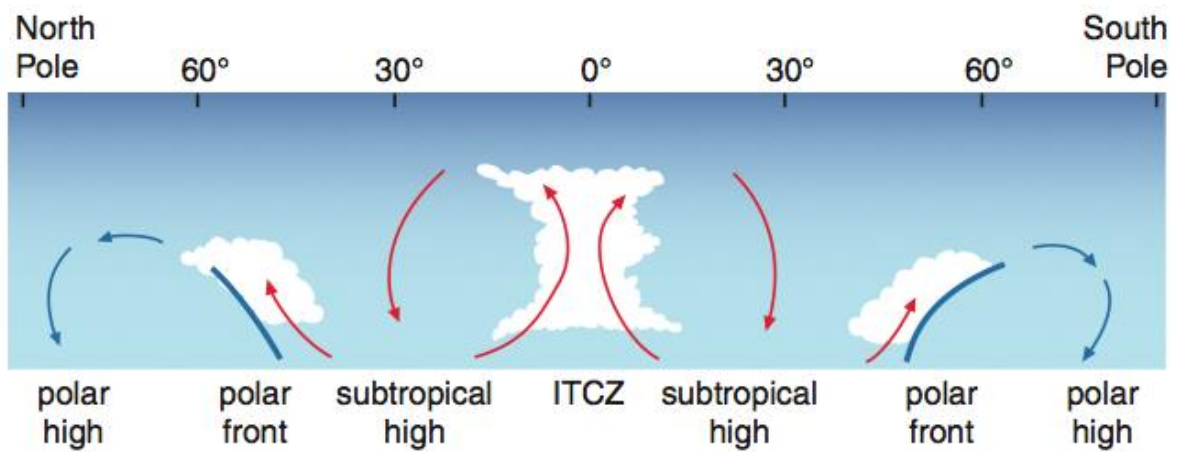


Fig. 3A Question 3

Changes to the surface area of water in the Aral Sea basin, 1960 to 2009

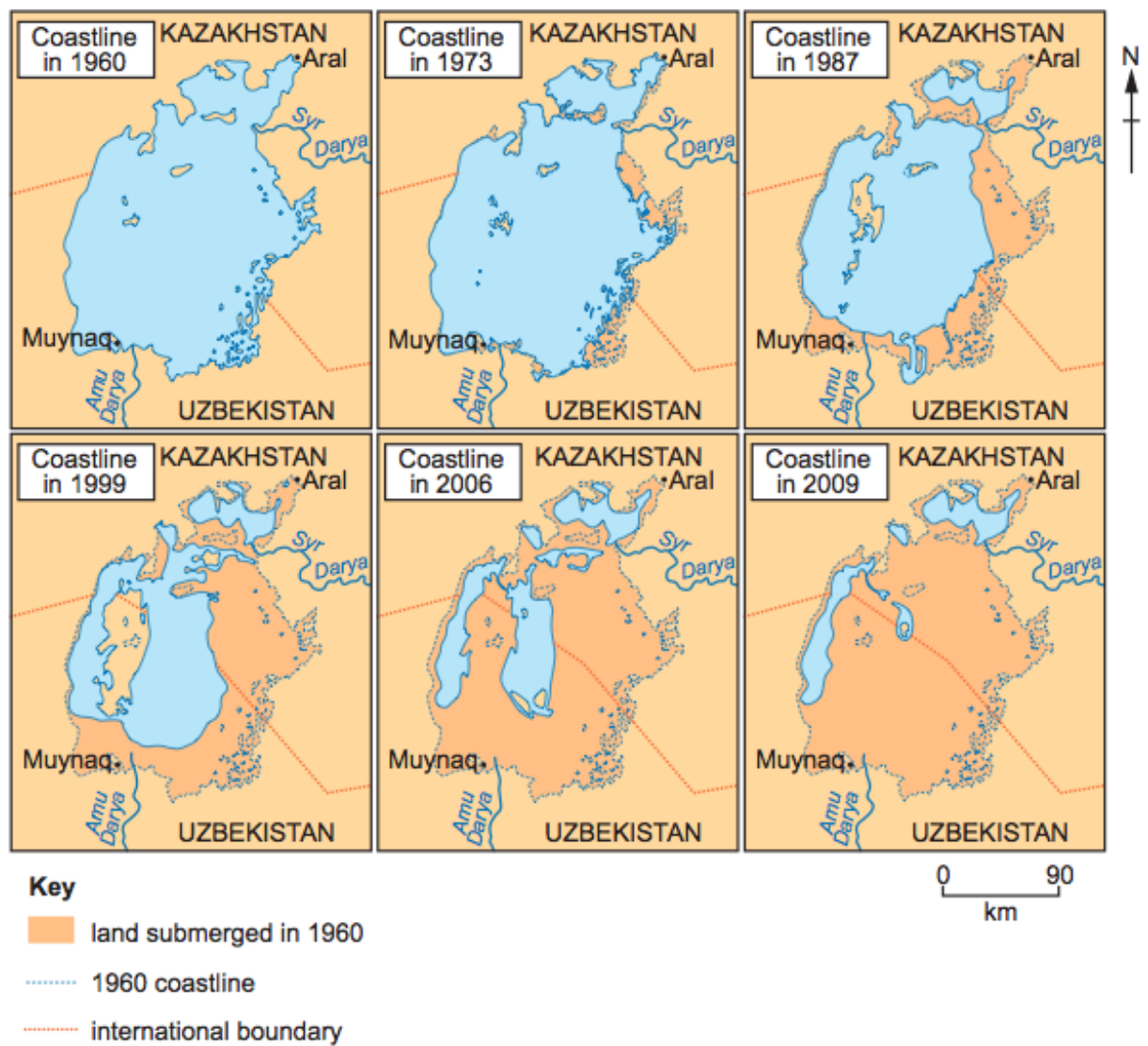


Fig. 3B for Question 3
Surrounding area in Central Asia

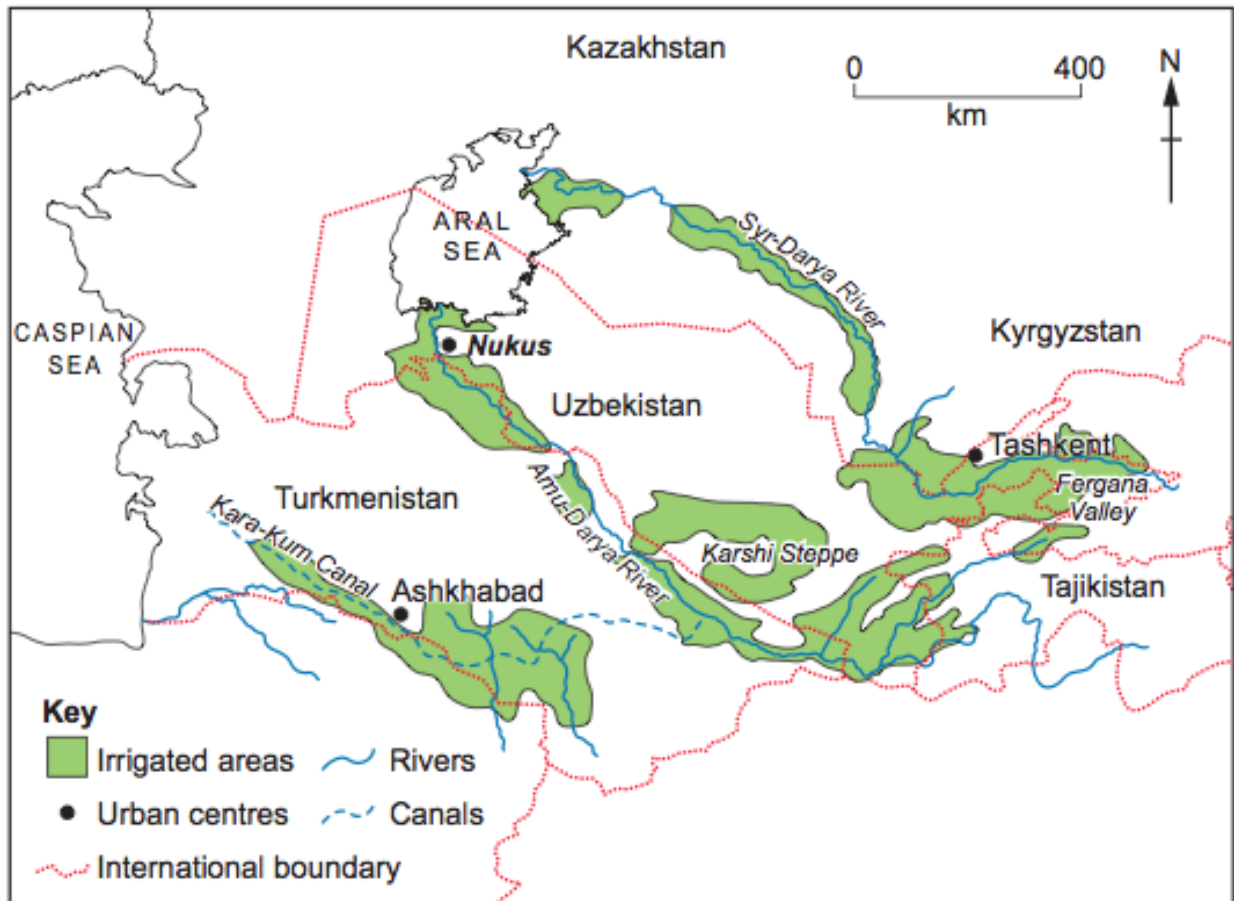


Fig. 4A for Question 4

Monsoons of South-east Asia and Australia

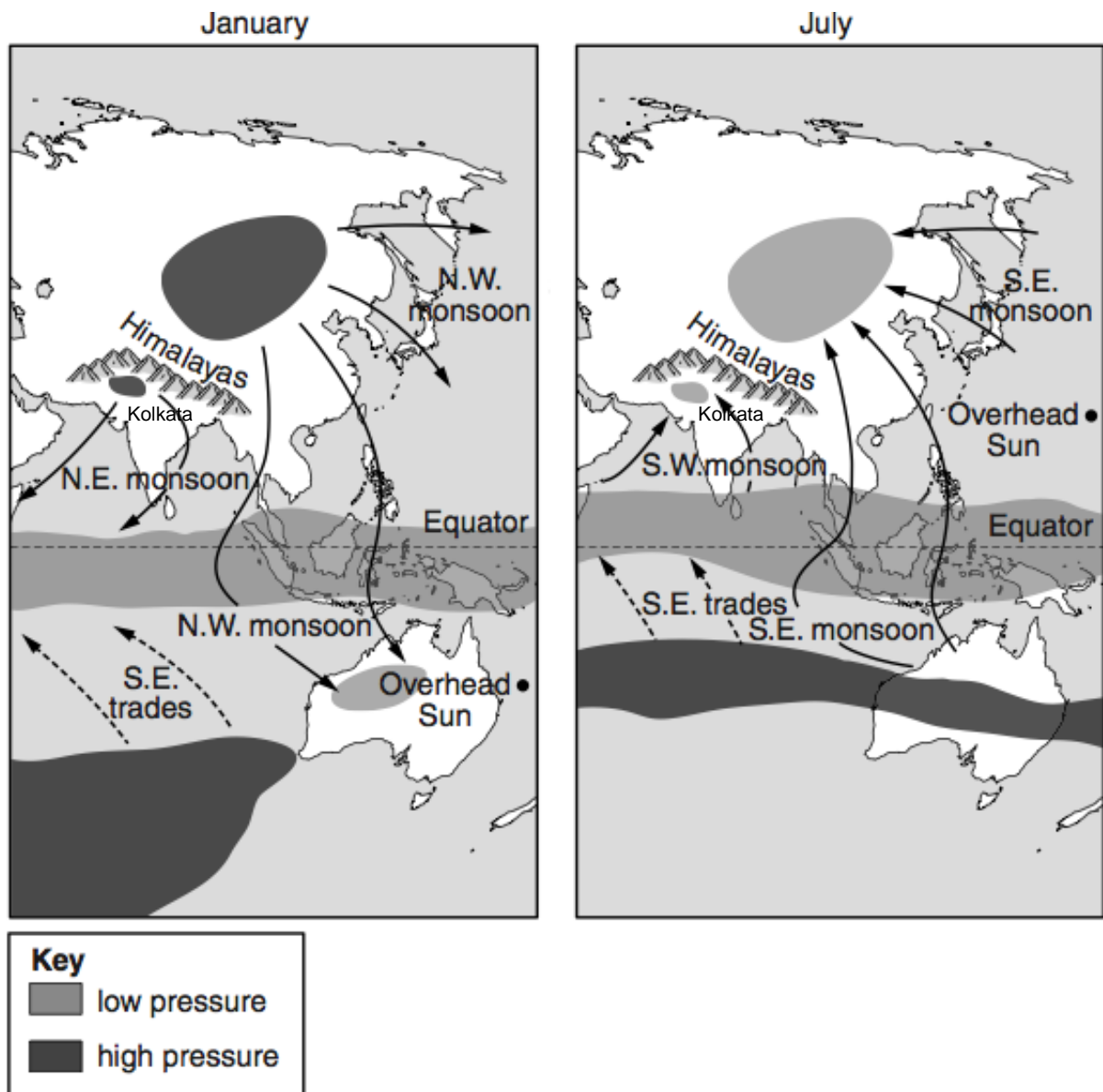


Fig. 4B for Question 4**Temperature and rainfall of Kolkata in 2015**

Month	Average Temperature (°C)	Days of Rain
Jan	20.1	1
Feb	23.0	2
Mar	27.6	3
Apr	30.2	4
May	30.7	8
Jun	30.3	16
July	29.2	21
Aug	29.1	20
Sept	29.1	15
Oct	28.2	8
Nov	24.9	1
Dec	20.8	0

Photograph A for Question 4**Waterlogged area in Kolkata on 2nd August 2015**

-----END-----