



# ANGLO-CHINESE JUNIOR COLLEGE

## JC 2 Preliminary Examinations 2017

---

**GEOGRAPHY**  
**Higher 1**

**8813/01**

**INSERT**

**Time: 3 hours**

**15 August 2017**  
**(Tuesday)**

**READ THESE INSTRUCTIONS FIRST**

This Insert contains all the Resources referred to in the questions.

**This Insert consists of 6 printed pages.**

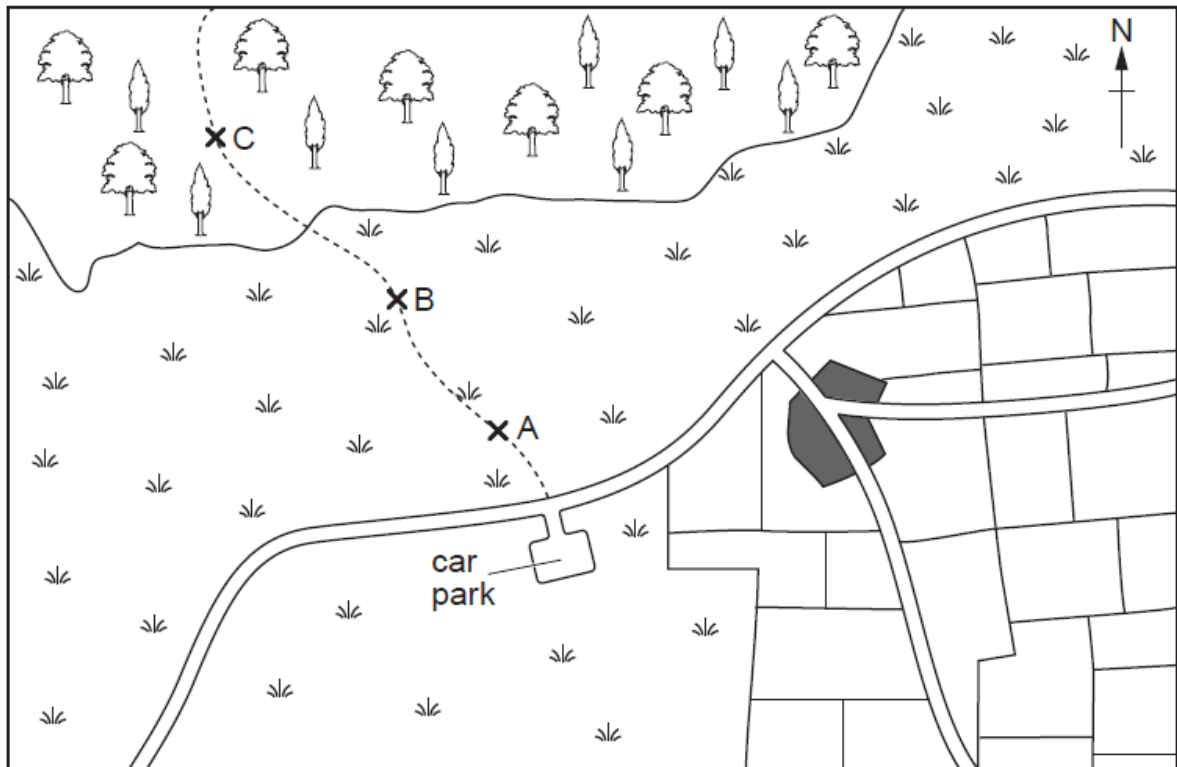


Department of Geography  
Anglo-Chinese Junior College  
25 Dover Close East Singapore 139745

**[Turn Over**

## Resource 1 for Question 1

### Location of investigation sites



#### Key

- x Investigation site
- road
- transect
- building

0 1 2 3 4  
km

- mixed woodland
- open grassland
- other built-up areas

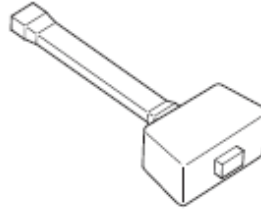
[Turn Over

## Resource 2 for Question 1

### Equipment used to measure infiltration



piece of  
drainpipe



hammer or  
mallet



water



measuring jug

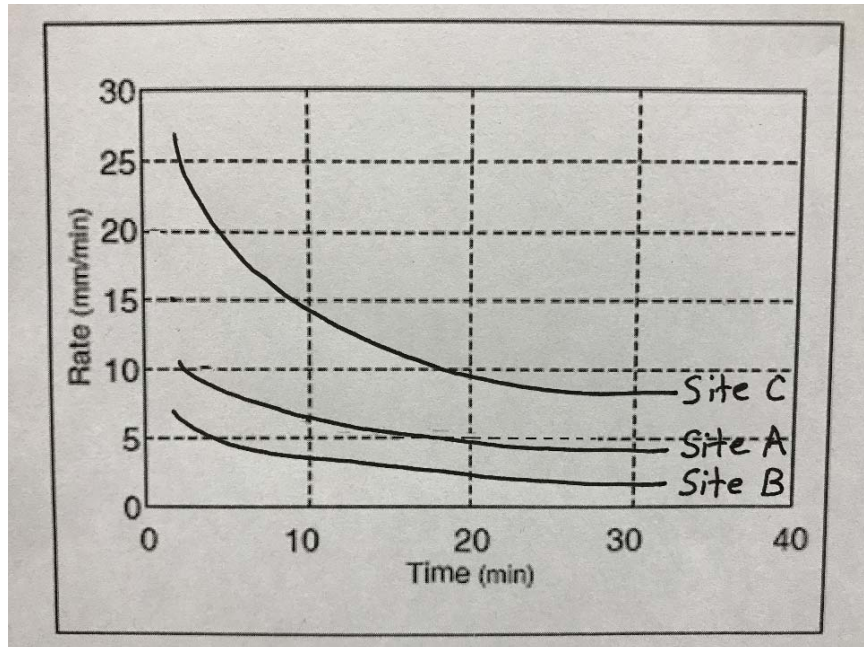


stopwatch

[Turn Over

Resource 3 for Question 1

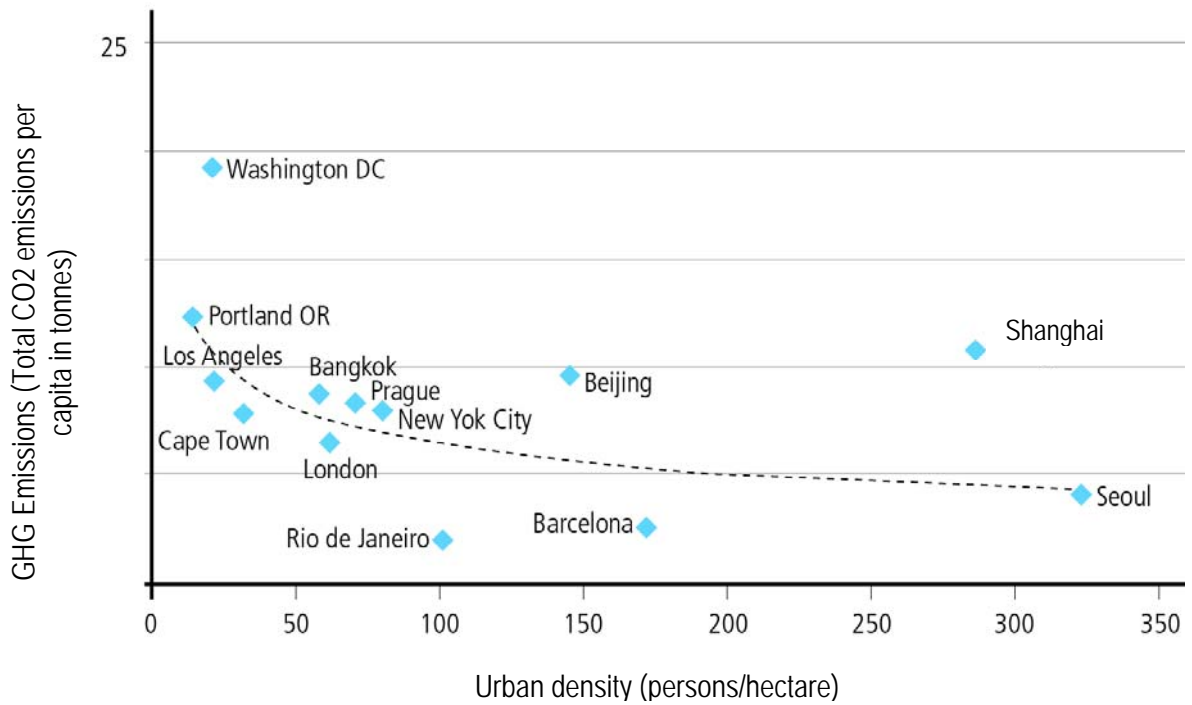
Data representation by investigation team



[Turn Over

## Resource 4 for Question 2

### Relationship between urban density and greenhouse gas emissions



## Resource 6 for Question 2

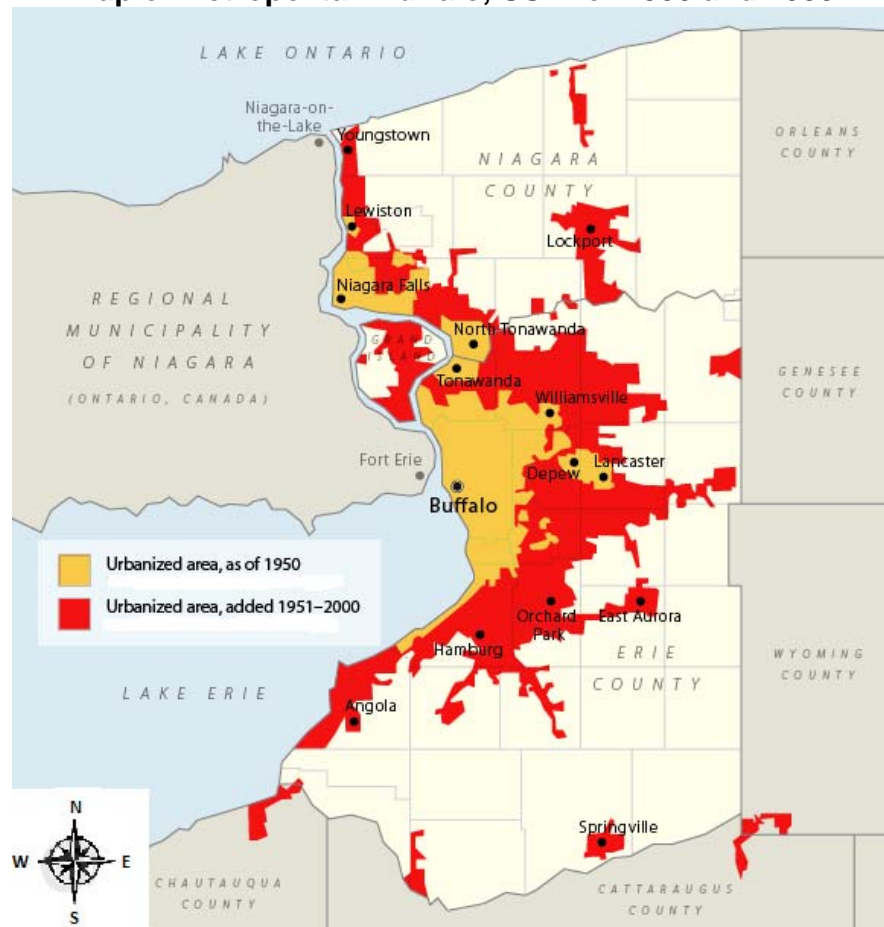
### Advertisement for Suburban Living



[Turn Over

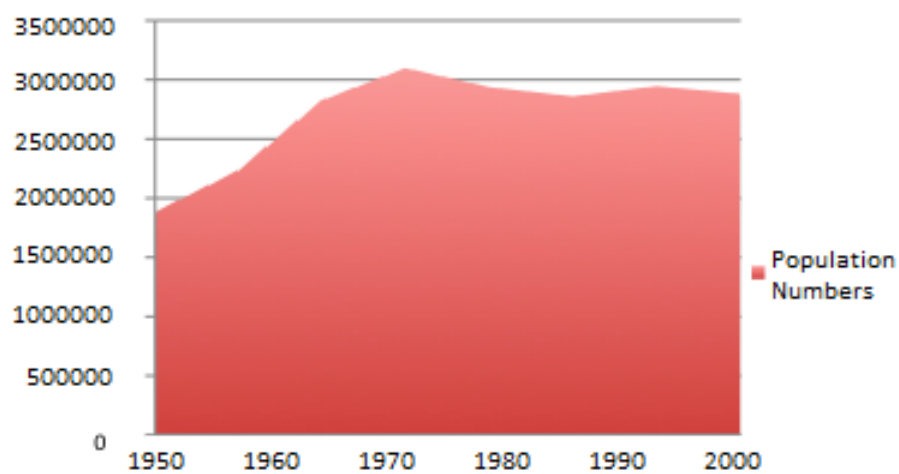
## Resource 7 for Question 2

**Map of Metropolitan Buffalo, USA for 1950 and 2000**



## Resource 8 for Question 2

**Population size of Metropolitan Buffalo between 1950 and 2000**



[End