

Answer **all** questions.

**1 Cluster 1: Geography in Everyday Life**

- (a) To celebrate diversity in the Siglap East estate, residents were invited to bring personal items representing the various ethnic backgrounds, like musical instruments and childhood games, to a workshop where their neighbours sketched these items. The community's sketches were then incorporated into the wall design.

Study Fig. 1.1 (Insert), which shows the community of people coming together to create the wall design.

With reference to Fig. 1.1, suggest how the wall design initiative could affect the residents' sense of place within their neighbourhood.

.....

.....

.....

.....

.....

.....

.....[3]

**(b)** Describe how urban neighbourhoods can achieve environmental sustainability.

.....

.....

.....

.....

.....

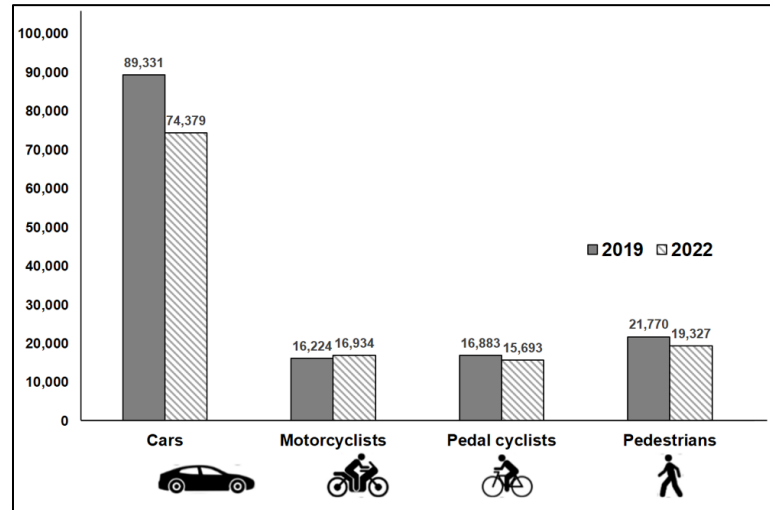
.....

.....

.....[4]

- (c) Study Fig. 1.2, which shows the reported road casualties by road user type in Great Britain in 2019 and 2022.

**Reported road casualties by road user type in Great Britain in 2019 and 2020**



**Fig. 1.2**

- (i) Compare the number of road casualties by road user type in Great Britain between 2019 and 2022.

.....

.....

.....

.....

.....

.....[3]

- (ii) Describe **one** health impact caused by traffic hazards.

.....

.....

.....[1]

- (d)** Study Fig. 1.3 (Insert), which shows the benefits provided by the coral reef ecosystem.

With reference to Fig. 1.3, suggest how coral reefs may provide ecosystem services for a community.

.....

.....

.....

.....

.....

.....

.....

.....

.....

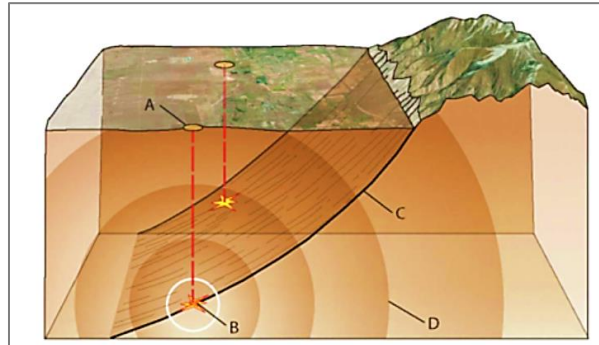
.....

.....[4]

[Total: 15]

## 2 Cluster 4: Tectonics

(a) Study Fig. 2.1, which shows a section of the earth's crust.



**Fig. 2.1**

Using Fig. 2.1, identify the letter (A, B, C or D) which represents the focus of the earthquake.

..... [1]

(b) Study Figs. 2.2A (Insert), which shows the distribution of shallow (0-60km), intermediate-depth (60-300km) and deep-focus (300-700km) earthquakes around the world that are above 5.5 magnitude in 2023, and Fig. 2.2B (Insert) which shows the total number of earthquakes in each depth category.

Using Figs. 2.2A and Fig.2.2B, describe the frequency and pattern of earthquakes around the world.

.....

.....

.....

.....

.....

.....

.....

.....

.....[4]

- (c) Study Figs. 2.3A (Insert) which shows the land use zoning map for areas around Mt. Usu in Japan after its eruption in 2000 and Fig. 2.3B which shows the response measures in the same area.

**Response measures after Mt. Usu eruption in 2000**

Zone	A	B	X	C
<b>Description</b>	Areas where craters are located or are nearby. Heavily damaged by hot rocks and mudflow.	Neighbouring areas of zone A. Damaged by hot rocks.	Areas not damaged by eruption, but at high risk of mudflow.	Areas that are not included in the zones A, B and X.
<b>Development plan</b>	All types of structures are prohibited.	All types of structures are prohibited.	All types of structures are prohibited. Existing structures to be moved to an appropriate zone.	Residential structures to be moved to safer areas. Limited development.
<b>Land use</b>	Disaster prevention facilities, green space, nature park.	Disaster prevention facilities.	Open space, park.	Agriculture, and low-density industrial buildings

**Fig. 2.3B**

Using Figs. 2.3A and 2.3B, explain how land use planning can help to reduce people's exposure to tectonic hazards.

.....

.....

.....

.....

.....

.....

.....

.....

.....[4]

City of Türkiye	Population Density (per sq km)	% of earthquake resistant buildings in the city	Risk of soil liquefaction
Ankara	237	45%	Low
Istanbul	3013	30%	High

With reference to Figs. 2.4A and 2.4B, compare the factors influencing earthquake disaster risks in Ankara and Istanbul.

.....[6]

© Anglican High School Humanities Department 2024  
2279/02/S4 Preliminary Examinations

### 3 Cluster 5: Singapore

(a) Explain how climate change can lead to water insecurity in Singapore.

.....

.....

.....

.....

.....[2]

(b) Study Fig. 3.1 (Insert), which shows the citizen population by broad age bands.

(i) Using Fig. 3.1, describe the changes in the citizen population across broad age bands from 2012 to the 2030 projection.

.....

.....

.....

.....

.....

.....[3]

(ii) With reference to Fig. 3.1, explain how a change in the demographics of Singapore could affect its vulnerability.

.....

.....

.....

.....

.....

.....[3]



- (c) Study Fig. 3.2, which shows three ways Singapore adapts to food security issues.



Fig. 3.2

With reference to Fig. 3.2, explain how Singapore addresses food security issues.

.....

.....

.....

.....

.....

.....

.....[3]

- (d) Study Fig. 3.3, which outlines the 5 Pillars of the Singapore Green Plan 2030, and Fig. 3.4, an extract from the Economic Development Board (EDB) on Singapore's position as Asia's technology capital.

### The 5 Pillars of Singapore Green Plan 2023

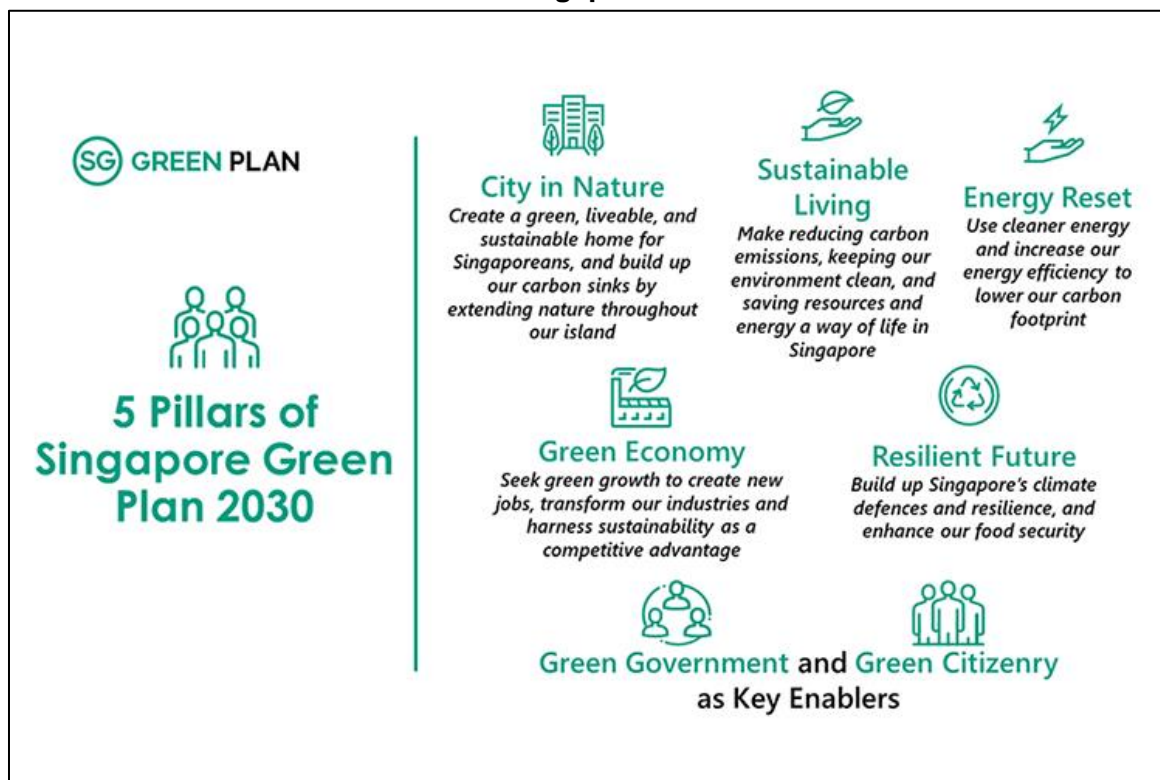


Fig. 3.3

### Extract from EDB on Singapore's position as Asia's technology capital.

#### WHERE SINGAPORE STANDS — AND WHERE IT SOARS

Berlin. Stockholm. San Francisco. These cities are widely regarded as among the hottest places in the world to launch a new business. But on the 2017 list of Best Cities for Startups compiled by Berlin-based research firm Nestpick, Singapore beat them all (as well as 80 other contenders, including Seoul, Shanghai and Beijing).

The factors that make Singapore so appealing to startups make it equally attractive to enterprise leaders looking to establish an Asian base of operations for their companies: A sophisticated information technology (IT) infrastructure and pro-business ecosystem geared toward fostering innovation. A rich, readily available pool of young, highly educated tech talent and advanced software engineers. And, last but not at all least, an invaluable geographical proximity to the region's thriving tech markets.

Fig. 3.4

'Ensuring a competitive economy is the main goal of Singapore's sustainable development plans.'

With reference to Figs. 3.3 and 3.4, to what extent do you agree with this statement? Explain your answer.

.....[9

**[Turn over**

© Anglican High School Humanities Department 2024  
2279/02/S4 Preliminary Examinations