

Name: \_\_\_\_\_ Register Number: \_\_\_\_\_ Class: \_\_\_\_\_



南橋中學

**NAN CHIAU HIGH SCHOOL**  
**END-OF-YEAR EXAMINATION 2023**  
**SECONDARY THREE EXPRESS**

For Marker's Use

Parent's Signature: \_\_\_\_\_

**HUMANITIES**  
Paper 2 Geography

**5 October 2023, Thursday**

**2260/02**

**1 hour 45 minutes**

Candidates answer on the Question Paper

Write your name, class and index number in the spaces provided on the question paper.  
Write in dark blue or black pen.  
Do not use staples, paper clips, highlighters, glue or correction fluid.

Answer **all** questions

If working is needed for any question it must be shown with the answer.  
Omission of essential working will result in loss of marks.  
Calculators should be used where appropriate.

The number of marks is given in brackets [ ] at the end of each question or question part.  
The total marks for this paper is 50.

Setter: Mdm Tan Pek Cheng & Ms Periya Sundaram

This paper consists of **13** printed pages including the cover page.

---

## 1 Cluster 1: Geography in Everyday Life

- (a) With the help of an example, describe how a sense of place can be represented.

-----

-----

-----

-----[2]

- (b) Define the term sustainable development.

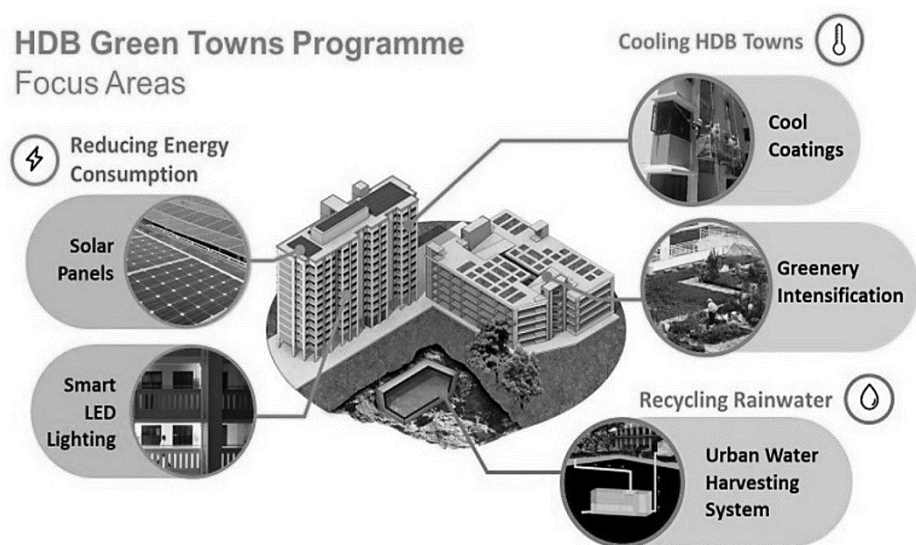
-----

-----

-----

-----[2]

- (c) Fig.1 shows plans by the Housing Development Board (HDB) to implement green features in neighbourhoods.



**Fig.1**

With reference to Fig.1, suggest how the features shown contribute to environmentally sustainable neighbourhoods.

-----

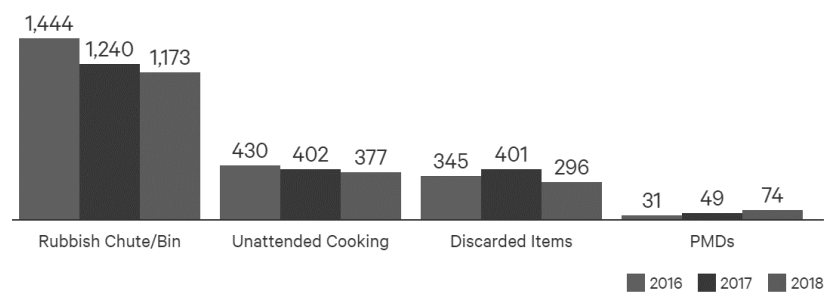
-----

-----

-----[4]

- (d) Fig. 2 shows data on the causes of residential fires in Singapore households between 2016 and 2018.

**Residential Fires in Singapore by Cause (2016-2018)**



**Fig.2**

Describe the trends observed in Fig. 2 between 2016 and 2018.

-----[3]

- (e) A group of students wanted to carry out an investigation to understand the factors that contributed to residents' sense of identity in Seng Kang New Town.

They decided to interview residents across various age group categories on a Sunday morning at the entrance of Seletar Mall located at Fernvale. Fig. 3 shows a map of Seng Kang New Town and Table 1 below shows the results of one of the survey questions.



**Fig.3**

Amenities that contribute to a sense of belonging	No. of respondents
Seletar Mall	3
Fernvale Community Club	4
Eateries at Jalan Kayu	2
Seng Kang Riverside Park	6

**Table 1**

With reference to Table 1 and Fig.3, evaluate the reliability of the data collection method and suggest improvements that can be made to the investigation.

---

---

---

---

---

---

---

---

---

---

-----

-----

-----

-----

-----

-----

-----[6]

(a) Explain one motivation factor that has led to the growth of tourism.

-----

-----

-----

-----

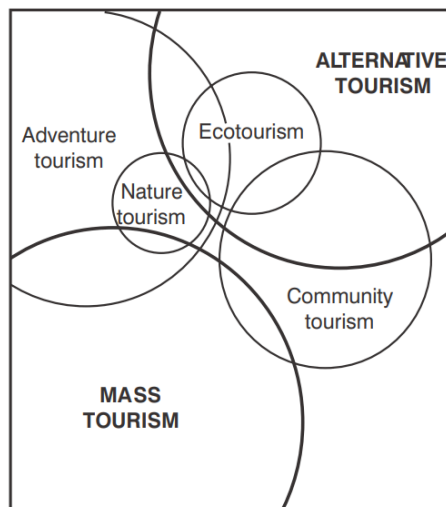
-----

-----

-----

-----[4]

(b) Study Fig. 4, which shows a Venn diagram of the different types of tourism.



Source: Sue Warn, *Recreation and Tourism* (Nelson Thornes, ISBN 0-7487-4418-5: p. 8, Fig. 1.4)

**Fig. 4**

Using an example, compare the characteristics between adventure tourism and ecotourism.

-----

-----

-----

-----

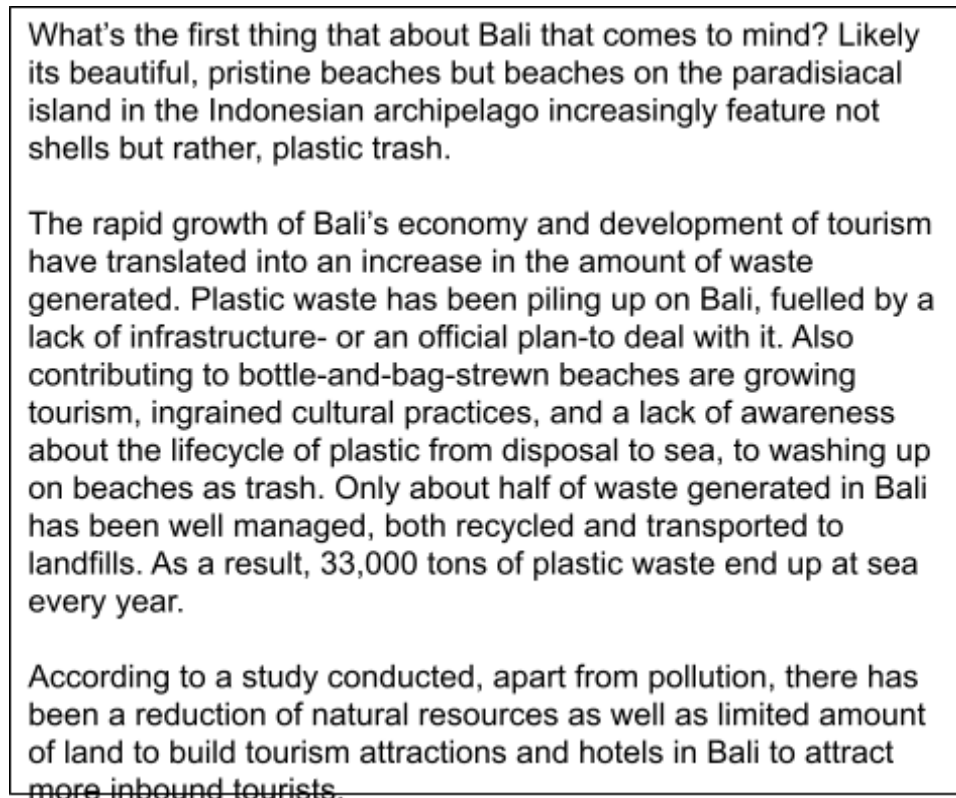
-----

-----

-----

-----[4]

(c) Study Fig.5, which shows information on tourism in Bali.



**Fig.5**

(i) With reference to Fig.5, which stage of tourism development is Bali at? Give reasons to support your answer.

-----

-----

-----

-----

-----[3]

- (ii) Suggest how Bali can improve itself to reach the next stage of tourism development.

-----

-----

-----

-----[2]

- (d) Describe the travel patterns of the Dependable-type travellers.

-----

-----

-----

-----

-----[3]

- (e) Fig. 6 shows information on ways social media influences American tourists' travel choices.

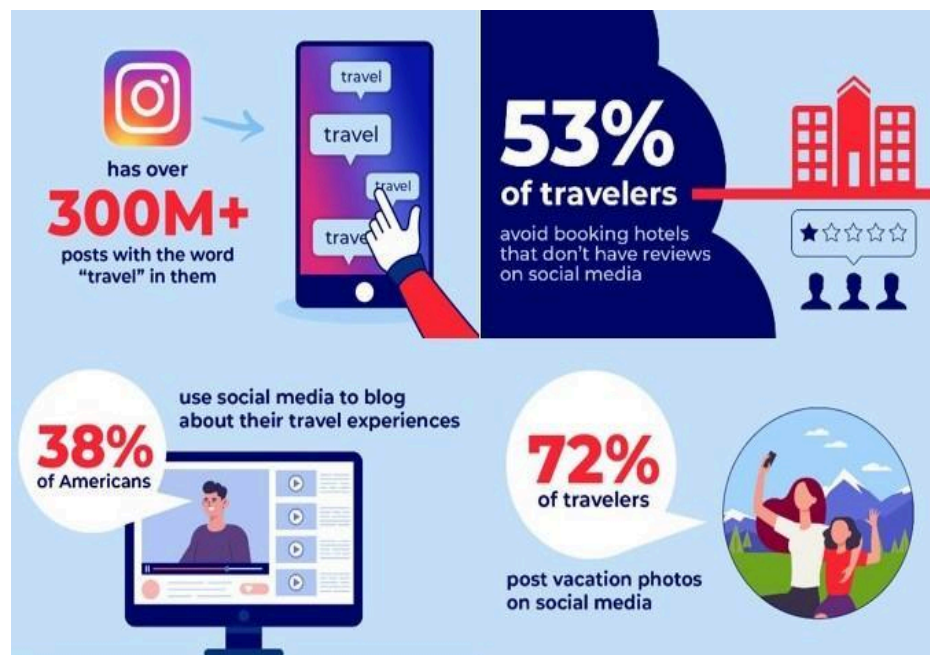


Fig.6

With the help of Fig.6 and your own knowledge, explain how globalisation contributes to increasing trends in tourism.



-----  
-----  
-----  
-----  
-----  
-----  
-----  
-----[4]

(f) Evaluate the effectiveness of country governments in ensuring sustainable tourism development.

-----  
-----  
-----  
-----  
-----  
-----  
-----  
-----[4]

(g) ‘Tourism brings only advantages to the economy of countries.’

To what extent do you agree with this statement? Explain your answer.

-----  
-----  
-----  
-----  
-----

Handwriting practice lines consisting of 20 horizontal dashed lines.

---

---

---

---

---

---

---

---

---

---

---

[9]

**-End of Paper-**

### Copyright Acknowledgements

Figure 1	©	<a href="https://www.mnd.gov.sg/newsroom/press-releases/view/rejuvenating-and-greening-hdb-towns-for-sustainable-living">https://www.mnd.gov.sg/newsroom/press-releases/view/rejuvenating-and-greening-hdb-towns-for-sustainable-living</a>
Figure 2	©	<a href="https://www.valuechampion.sg/e-scooters-are-they-really-big-risk-residential-fires">https://www.valuechampion.sg/e-scooters-are-they-really-big-risk-residential-fires</a>
Figure 3	©	<a href="https://www.handymansingapore.net/sengkang/">https://www.handymansingapore.net/sengkang/</a>
Figure 4	©	Warn, S. (1999, July 1). <i>Recreation and Tourism: A Changing Industry</i> .
Figure 5	©	<a href="https://www.nationalgeographic.com/science/article/bali-fights-for-its-beautiful-beaches-by-rethinking-waste-plastic-trash">https://www.nationalgeographic.com/science/article/bali-fights-for-its-beautiful-beaches-by-rethinking-waste-plastic-trash</a> <a href="https://www.academia.edu/49278693/The_Butler_Tourism_Area_Life_Cycle_applied_to_Bali">https://www.academia.edu/49278693/The Butler Tourism Area Life Cycle applied to Bali</a>
Figure 6	©	<a href="https://passport-photo.online/blog/social-media-vs-travel/#gref">https://passport-photo.online/blog/social-media-vs-travel/#gref</a>

**ADDITIONAL PAGE**

If you use the following lined pages to complete the answer(s) to any question(s), the question number(s) must be clearly shown.

This image shows a full page of white paper with horizontal dashed lines, typical of primary-ruled notebook paper. The lines are evenly spaced and run across the width of the page. There are no margins, text, or other markings on the paper.

**ADDITIONAL PAGE**

If you use the following lined pages to complete the answer(s) to any question(s), the question number(s) must be clearly shown.

[illegible]

-----