



ANDERSON SERANGOON JUNIOR COLLEGE

JC2 H2 Geography Preliminary Exam (2024)

H2 GEOGRAPHY

9173/ 01

26 August 2024

INSERT

3 hours

READ THESE INSTRUCTIONS FIRST

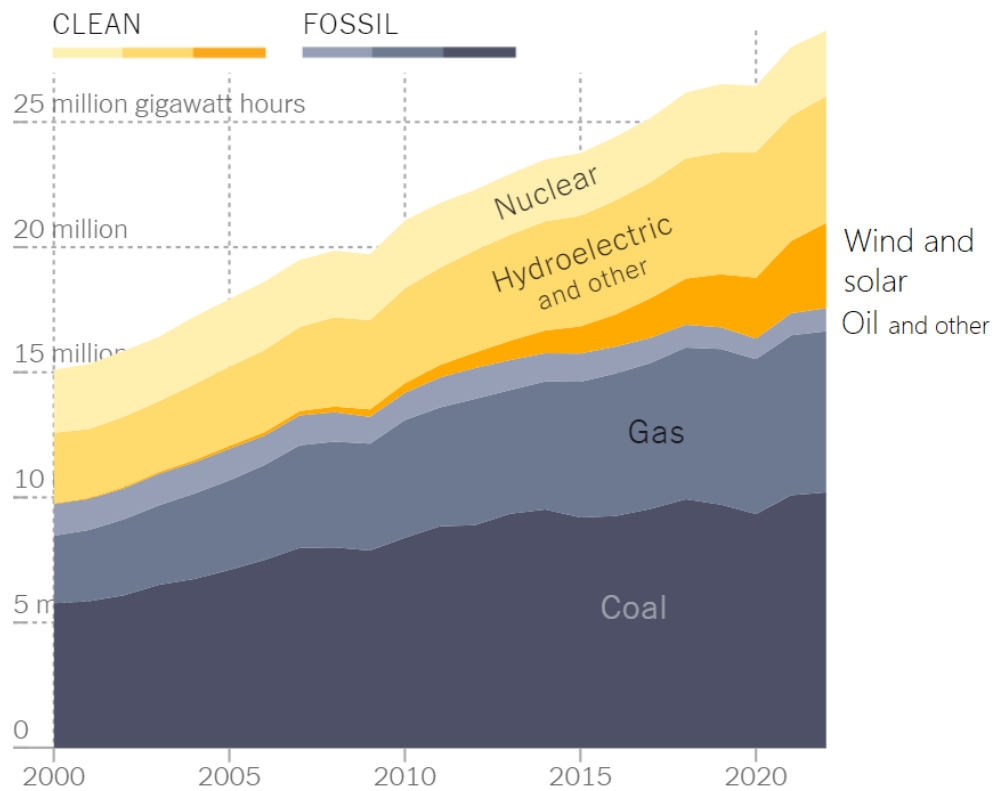
The Insert contains all the Resources referred to in the questions.

This question paper consists of 7 printed pages.

[Turn Over]

Resource 1 for Question 1

World electricity generation from 2000 to 2020



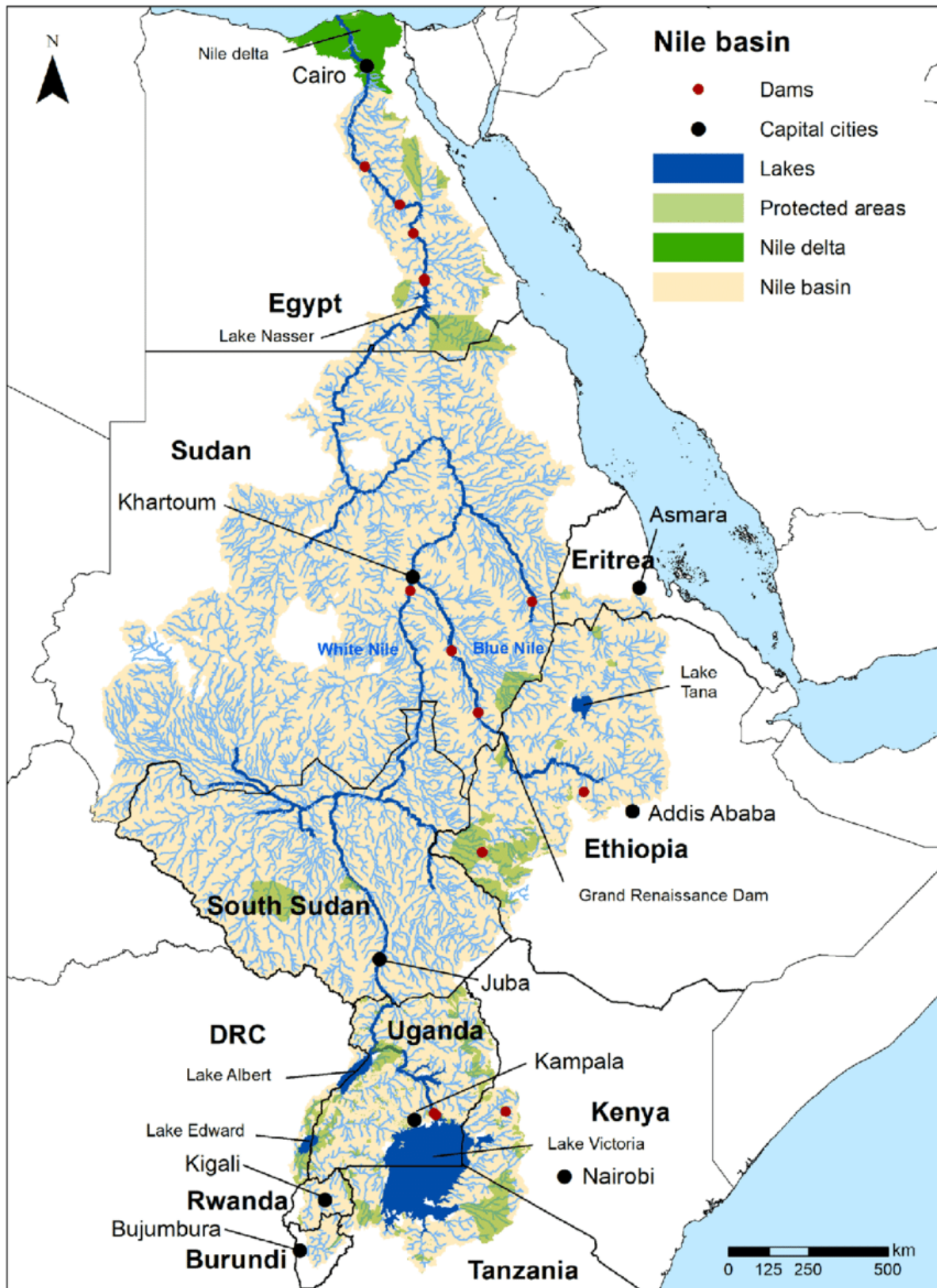
Resource 2 for Question 1

Distribution of water from the Nile River Basin (%) and rate of dependence on the water flow of the Nile River Basin (%) by country



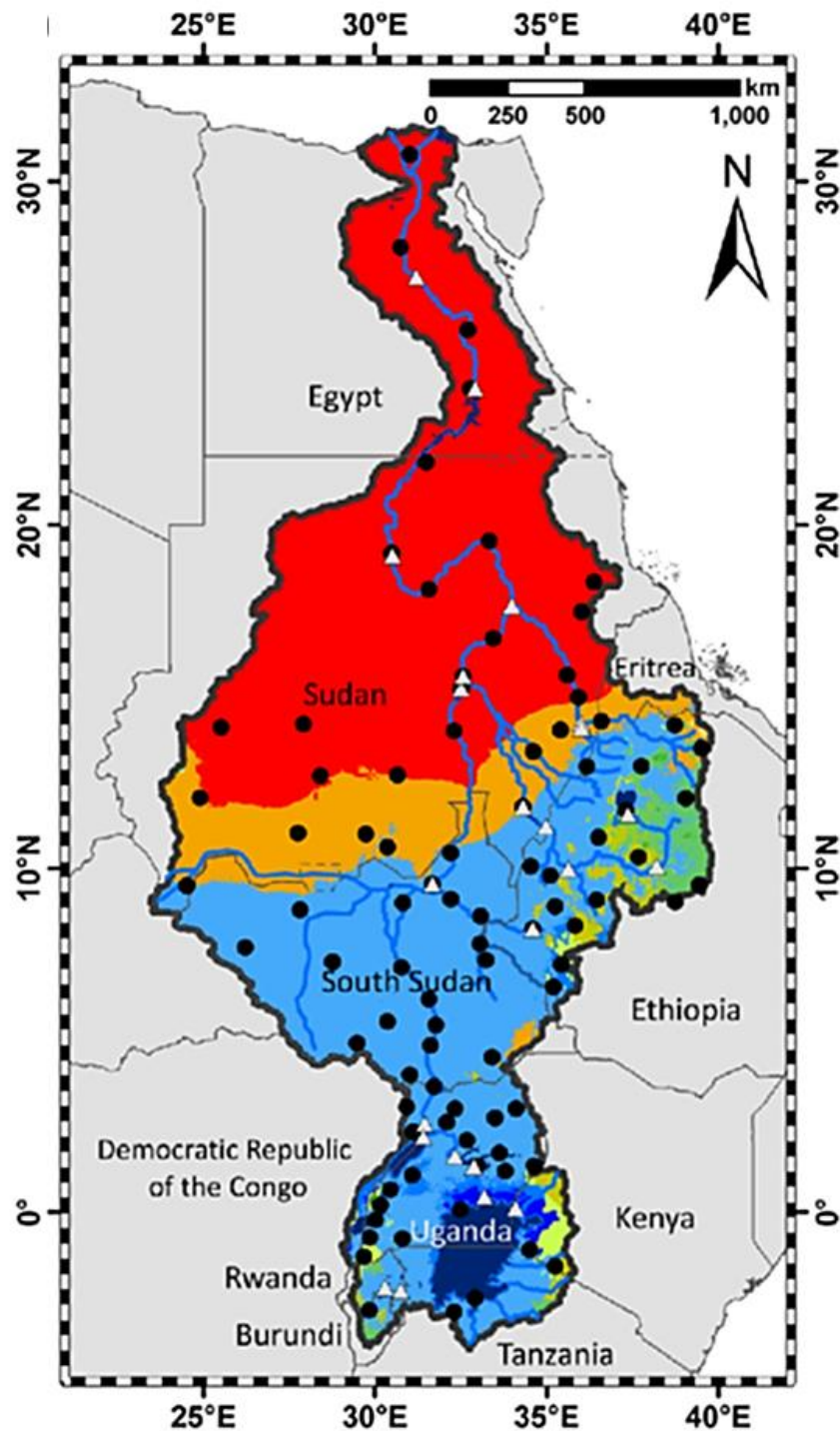
Resource 3 for Question 1

Map of the Nile River Basin and its riparian states



Resource 4 for Question 1

Climate classification of countries in the Nile River Basin



Köppen-Geiger climate classification

■ Af: Tropical, rainforest	■ Cfb: Temperate, no dry season, warm summer
■ Am: Tropical, monsoon	■ Csa: Temperate, dry summer, hot summer
■ Aw: Tropical, savanna	■ Csb: Temperate, dry summer, warm summer
■ BSh: Arid, steppe, hot	■ Cwa: Temperate, dry winter, hot summer
■ BSk: Arid, steppe, cold	■ Cwb: Temperate, dry winter, warm summer
■ BWh: Arid, desert, hot	

Resource 5 for Question 1**Article about the usage of the Nile River water by Ethiopia and Egypt**

The Grand Ethiopian Renaissance Dam (GERD) is on the Blue Nile tributary in the northern Ethiopia highlands, from where 85% of the Nile's waters flow. While it is not quite complete yet, it has already involved 12 years of construction. Ethiopia wants the dam to produce electricity for the 60% of its population who currently have no supply. It is hoped this will eventually double Ethiopia's electricity output, provide businesses with constant electricity supplies and boost development.

Egypt also heavily relies on the River Nile for nearly all of its freshwater. 86% of Egypt's freshwater withdrawals are consumed by the agricultural sector. Egypt's agriculture sector accounts for only 11% of GDP, but it employs about a quarter of the population and supports the livelihoods of nearly a quarter more. Water from the Nile is also used to fill Lake Nasser, the reservoir for Egypt's own hydro-electric power plant, the Aswan High Dam.

Resource 6 for Question 2

Weathered rock which contains iron



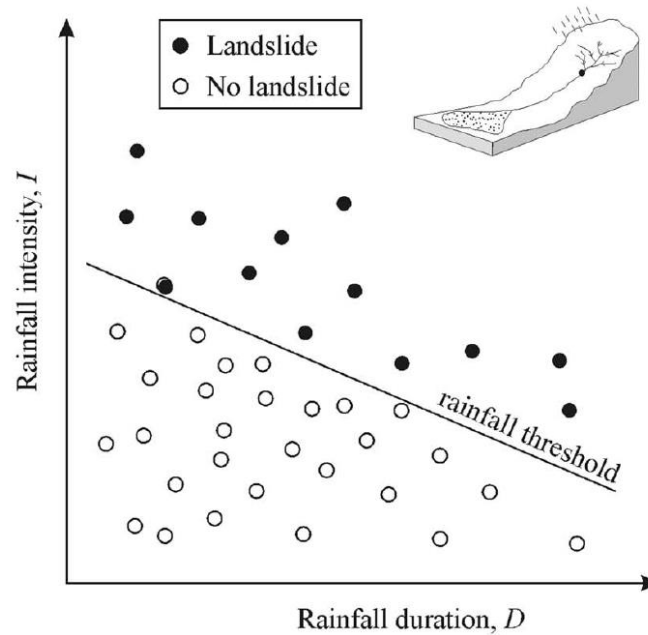
Resource 7 for Question 2

Limestone region in Jamaica



Resource 8 for Question 2

Relationship between rainfall characteristics and the occurrence of debris flows



Resource 9 for Question 2

Schematic diagram of factors leading to the development of a mass movement

