



Catholic Junior College
JC2 Preliminary Examinations
Higher 2

GEOGRAPHY

9751/02

Paper 2

27 August 2018

3 hours

READ THESE INSTRUCTIONS FIRST

This Insert contains all the Photographs, Table and Figures referred to in the questions.

This document consists of **12** printed pages and **1** blank page.

[Turn over]

BLANK PAGE

Resource 1 for Question 1



Legend:

Site for Geographical Investigation 

Resource 2A for Question 1 Site A (Nature Reserve)



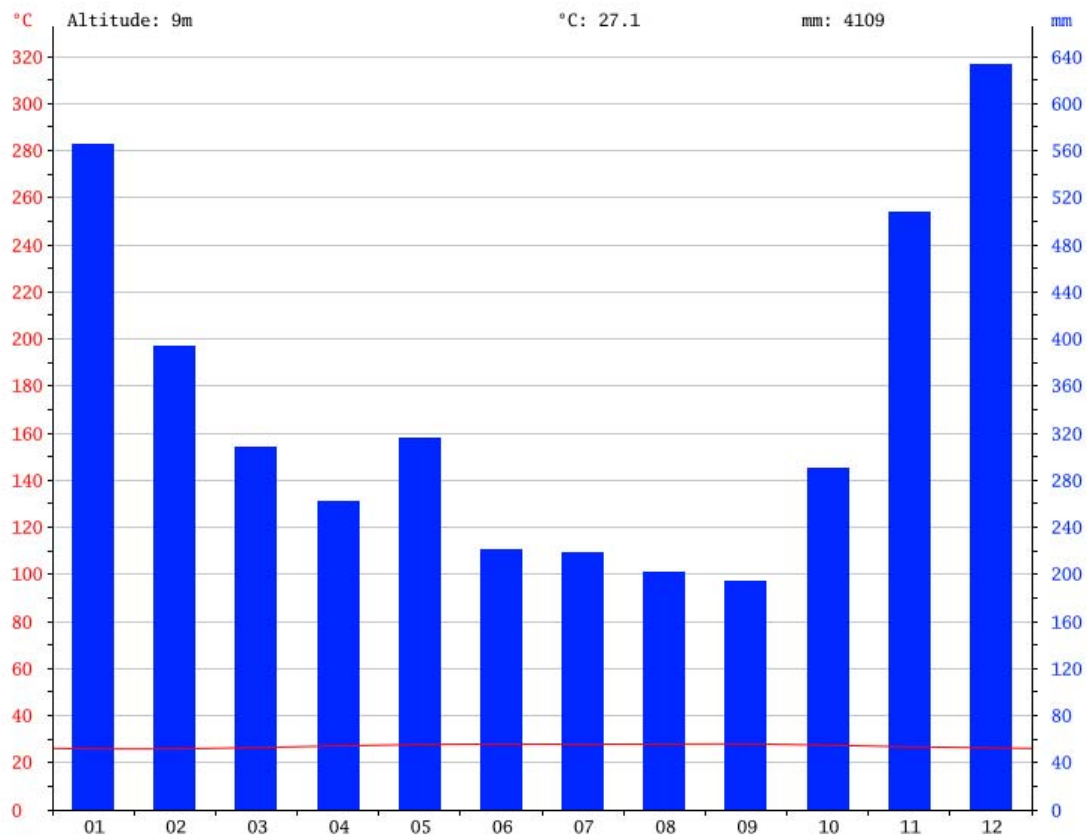
Resource 2B for Question 1
Site B (Residential – The Dairy Farm Estate)



Resource 3 for Question 1
Data collected from Sites A (Nature Park) and B (Residential)

Site A			Site B		
Land use	Nature park		Land use	Residential	
Fall Unit / Cm	Time/Sec	Infiltration Rate (cm/min)	Fall Unit / Cm	Time/Sec	Infiltration Rate (cm/min)
1	2	30	1	25	2.40
2	5	12	2	63	0.95
3	8	7.5	3	134	0.45
4	12	5	4	323	0.19
5	16	3.75	5	431	0.14
6	22	2.73	6	548	0.11
7	30	2	7	683	0.09
8	39	1.54	8	818	0.07
9	48	1.25	9	952	0.06
10	58	1.03	10	1088	0.06
11	70	0.86	11	1221	0.05
12	84	0.71	Average Infiltration Rate (cm/min)		0.42
13	100	0.6			
14	120	0.5			
15	145	0.41			
16	170	0.35			
17	195	0.31			
18	220	0.27			
19	246	0.24			
20	272	0.22			
Average Infiltration Rate (cm/min)		3.56			

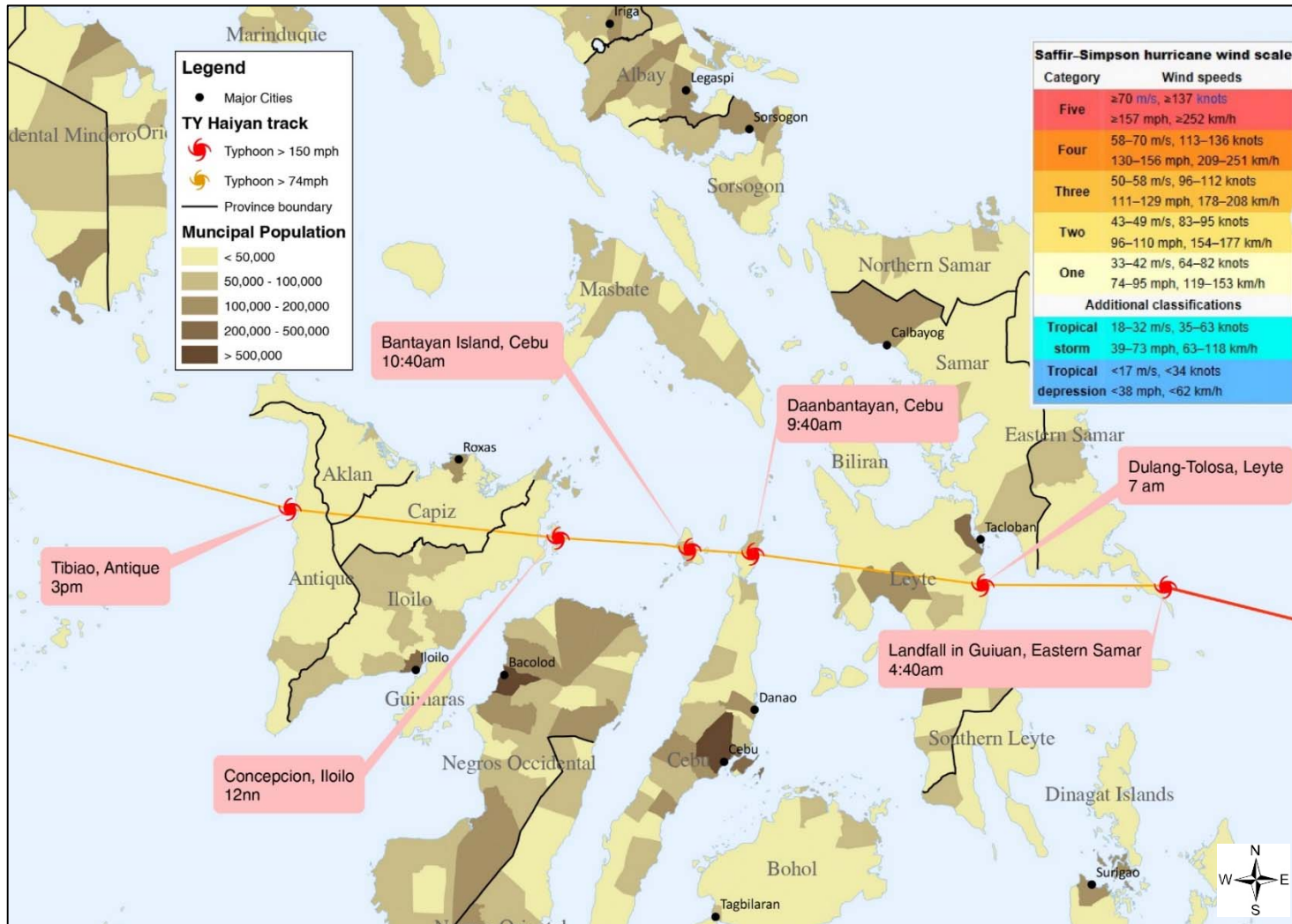
Resource 4 for Question 2
Climograph of Guiuan, Eastern Samar



Resource 5 for Question 2
Photograph of the devastation in Tacloban City, Eastern Samar

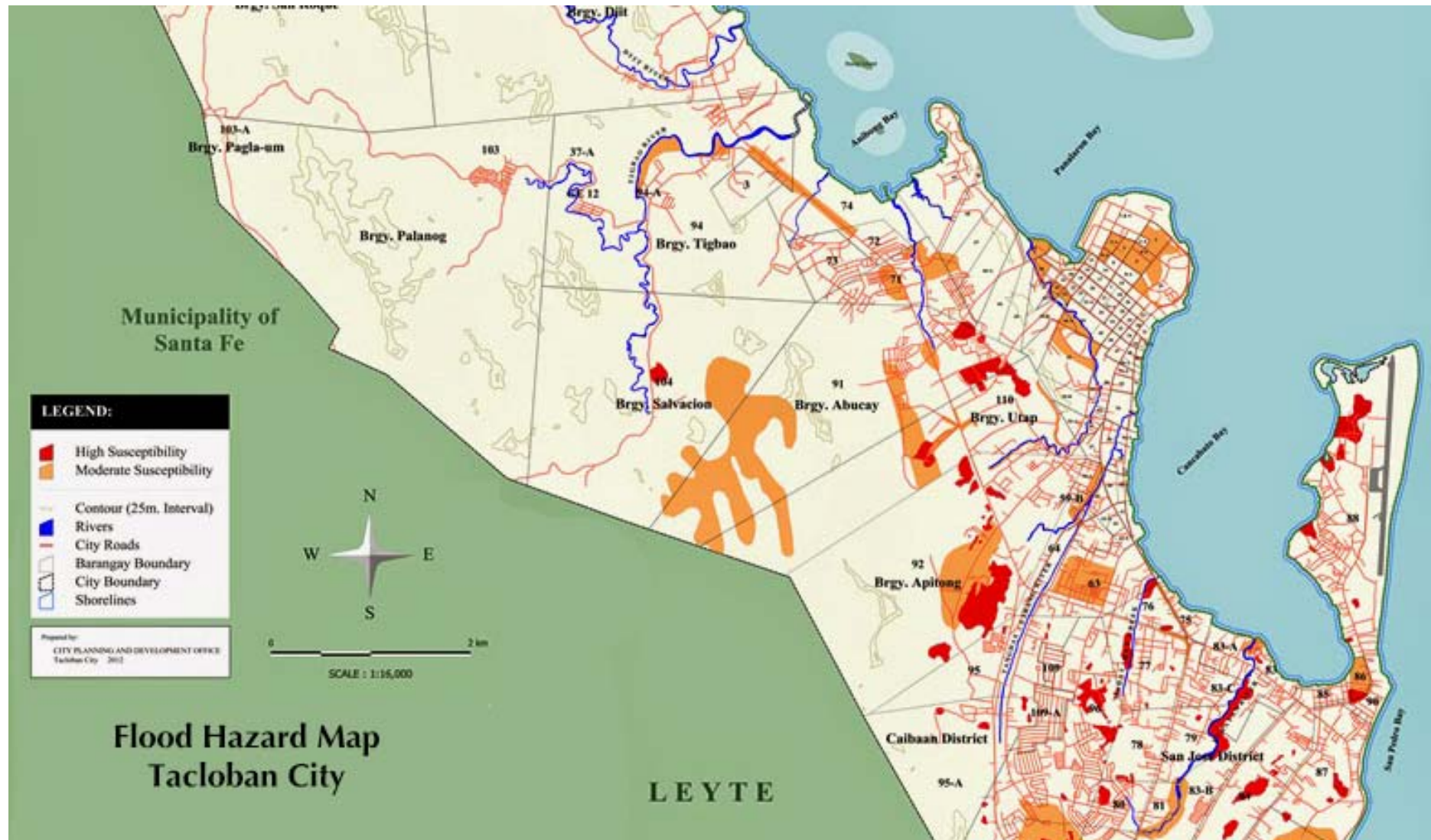


Resource 6 for Question 2
Map showing development of Typhoon Haiyan across The Philippines on November 8, 2013

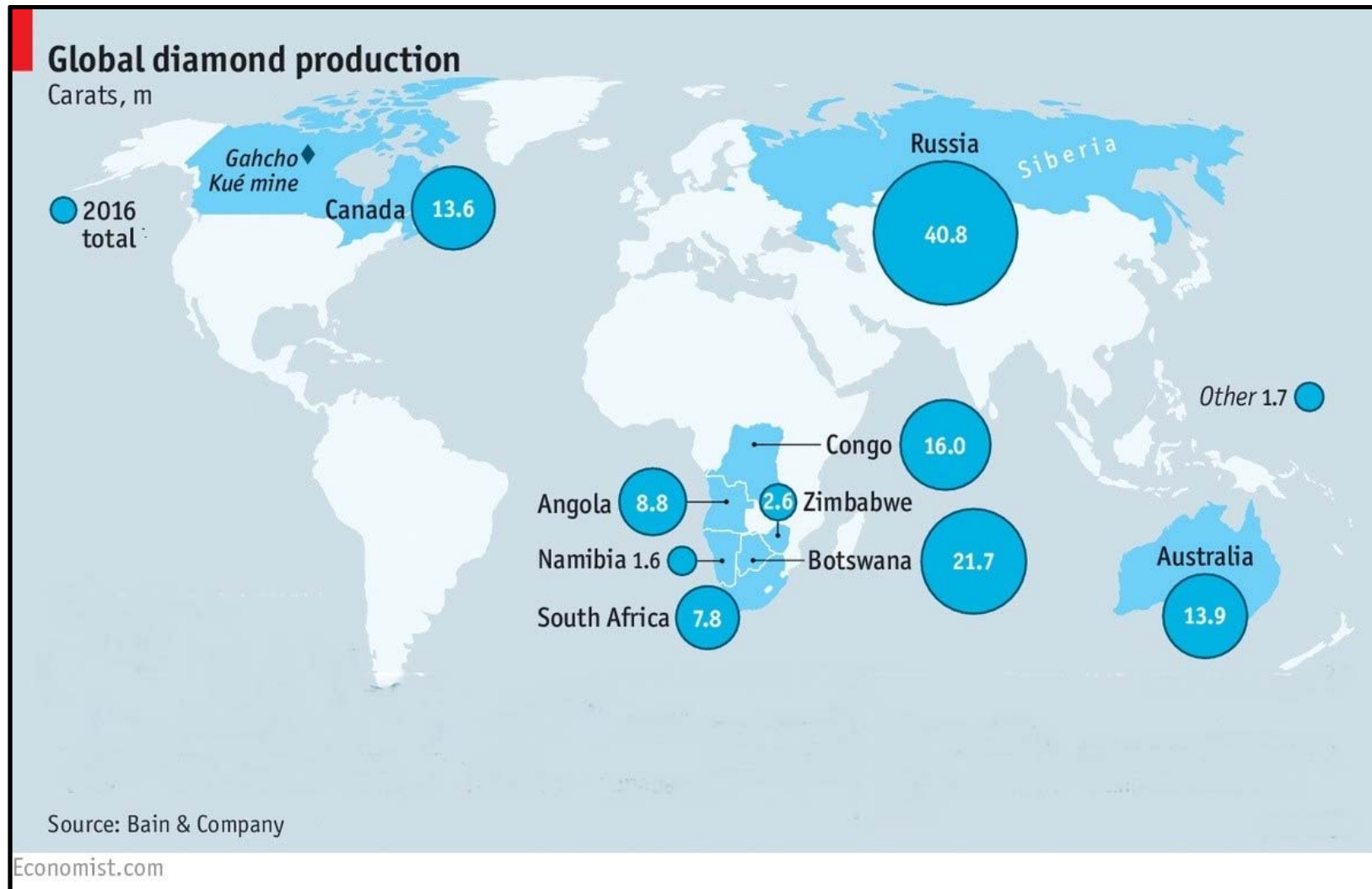


Note: A **municipality** is a local government unit (LGU) in the Philippines. Municipalities are also usually called *towns*.

Resource 7 for Question 2
Flood Hazard Map of a Section of Tacloban City



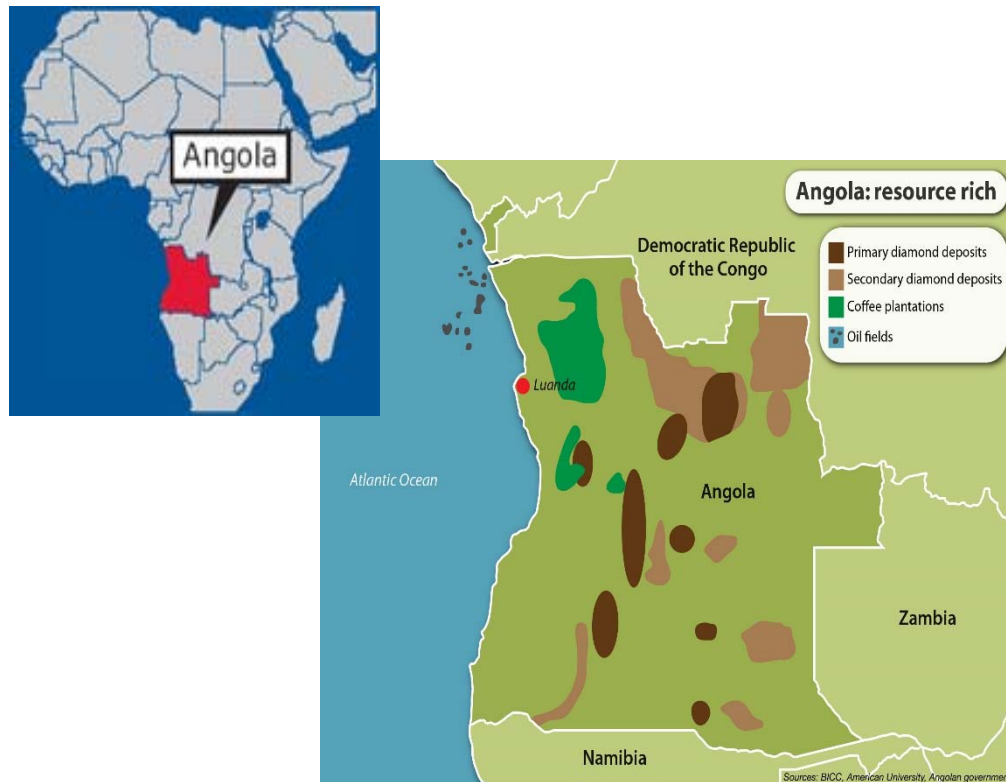
Resource 8 for Question 3



Source: <https://www.economist.com/international/2017/02/25/a-report-from-de-beerss-new-diamond-mine>

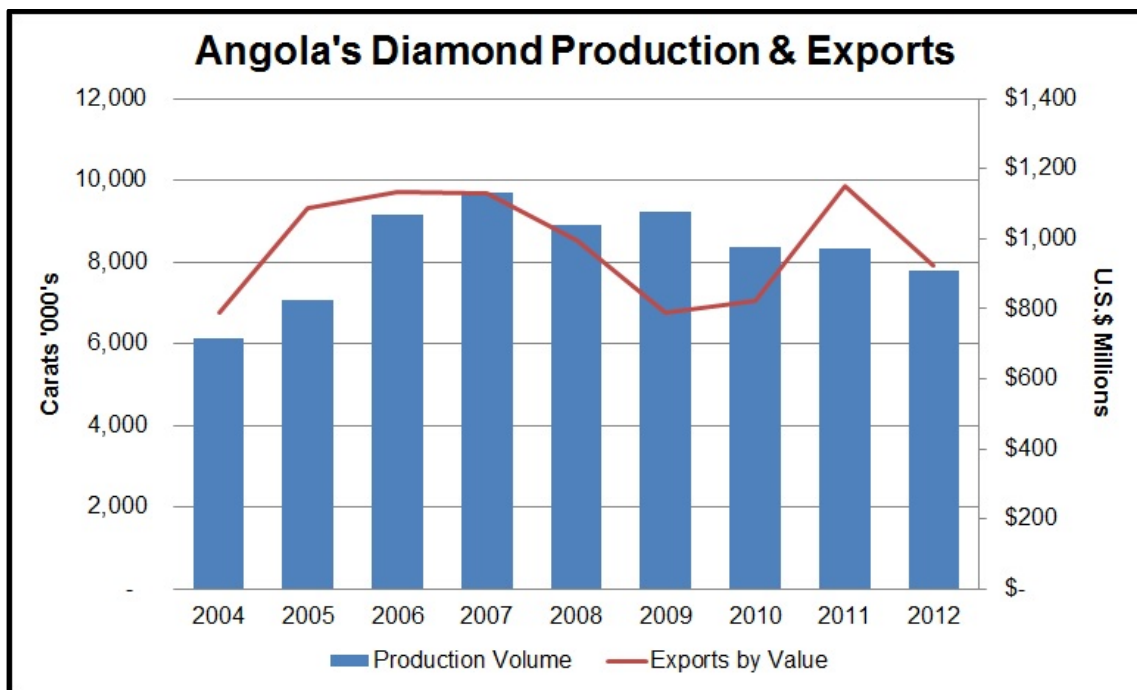
Resource 9

Distribution of Natural Resources in Angola



Source: <https://www.sahistory.org.za/place/angola>

Resource 10



Source:

<https://www.diamonds.net/News/NewsItem.aspx?ArticleID=43603&ArticleTitle=Angola%2C+100+Years+Later>

Resource 11

Angola eases controls over diamond sector, to double output in four years

Cecilia Jamasmie (<http://www.mining.com/author/cecilia/>) | Jun. 6, 2018, 3:42 AM |



Russia's Alrosa is the only major diamond company currently producing in Angola via its stake in the Catoca mine (pictured) - one of the world's largest. (Image courtesy of Wenco. (<https://www.wencomine.com/our-press/wenco-systems-run-catoca-fourth-largest-diamond-mine-world/>))

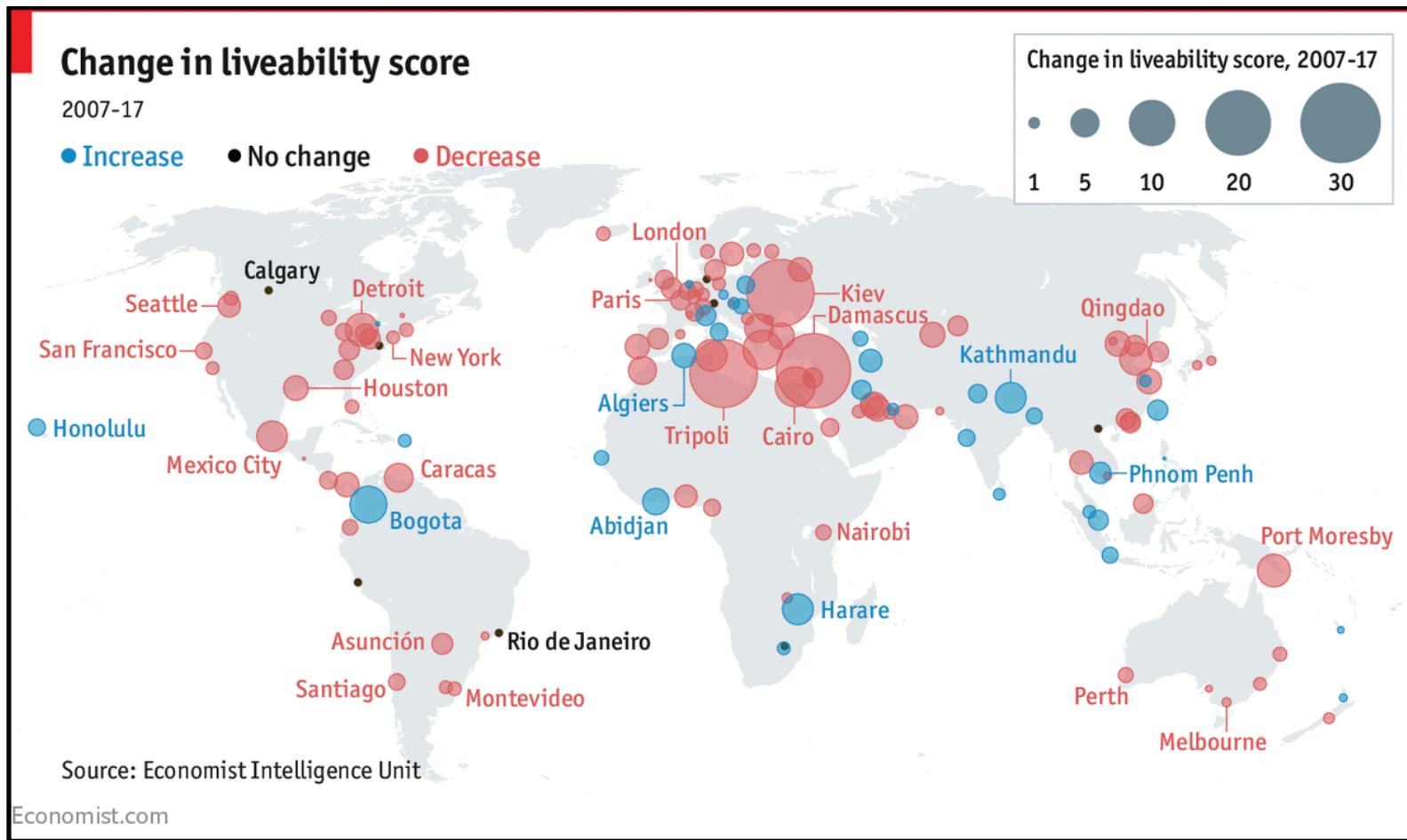
Angola, the world's fifth-largest diamond producer, is working on easing up its restrictive legislation over the industry in order to attract more foreign investment, up production and secure higher government revenue.

The country has historically had in place limiting rules over diamond operations, including not allowing foreigners to hold a majority stake and a requirement to sell all precious stones mined there through a central state-owned government agency.

Newly elected President, Joao Lourenço, wants to change all of that and so allow the second-largest oil producing country to diversify its economy, which has been hit by a sustained fall crude prices.

Source: <http://www.mining.com/angola-eases-controls-over-diamond-sector-to-double-output-in-four-years/>

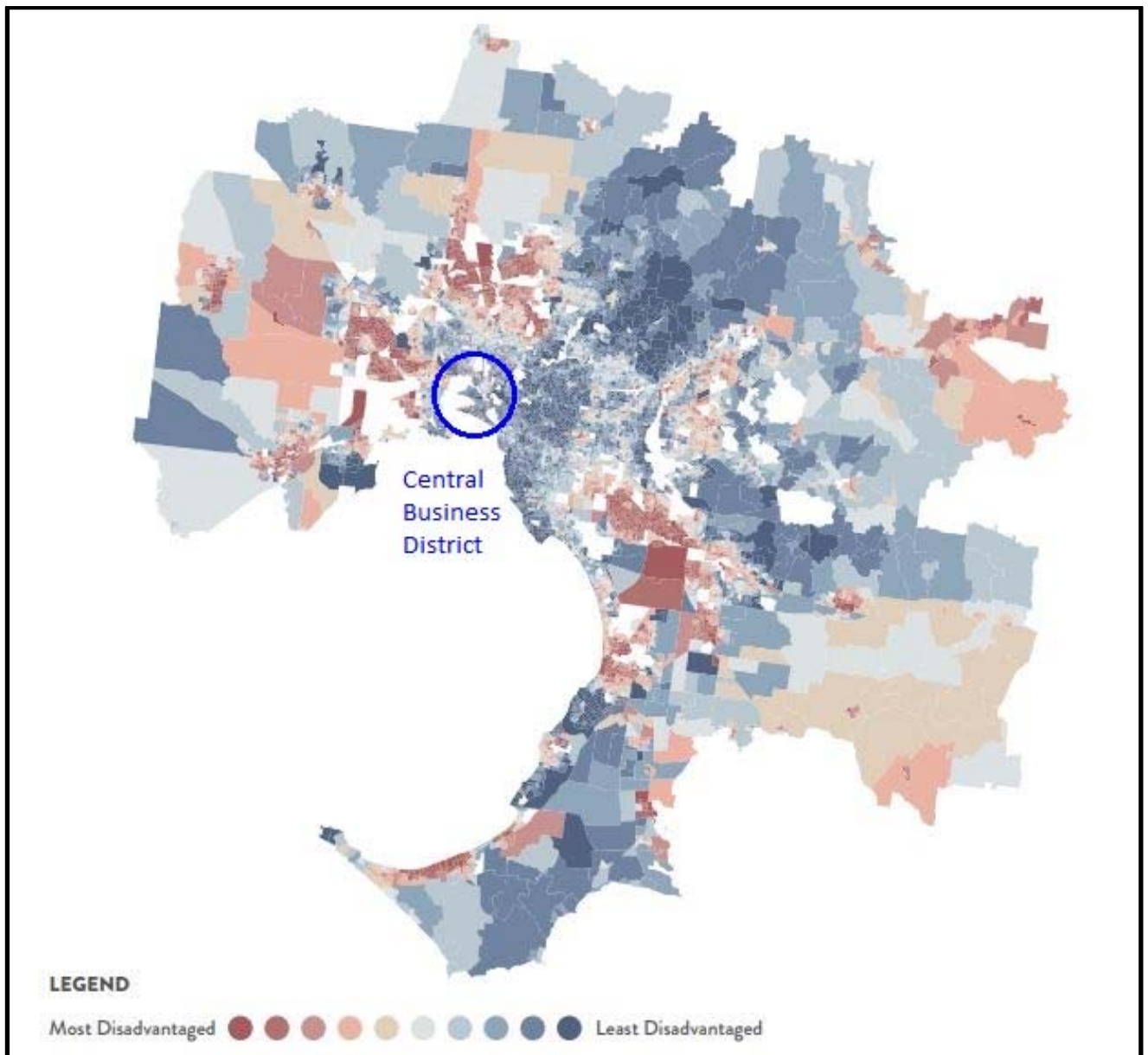
Resource 12



<https://www.economist.com/graphic-detail/2017/08/16/global-liveability-has-improved-for-the-first-time-in-a-decade>

Note: The Liveability index is weighted as follows: 25% for stability (e.g., crime, terrorism, war); 20% for healthcare (availability and quality); 25% for culture and environment (which includes a grab-bag of various metrics, such as temperature, level of corruption, and cultural attractions); 10% for education (availability and quality); and 20% for infrastructure quality.

Resource 13



High disadvantage is defined as low access to 'material and social resources and ability to participate in society', which include factors such as employment, English-speaking proficiency and household income.

Source: Resilient Melbourne Report.

<https://www.melbourne.vic.gov.au/SiteCollectionDocuments/resilient-melbourne-strategy.pdf>

Resource 14



Resilient Melbourne Report.

<https://www.melbourne.vic.gov.au/SiteCollectionDocuments/resilient-melbourne-strategy.pdf>

