



YISHUN INNOVA JUNIOR COLLEGE
JC 1 PROMOTIONAL EXAMINATION
Higher 1

CANDIDATE
NAME

CG

INDEX NO

GEOGRAPHY

8834/01

Paper 1

27th September 2023

2 hours

Additional Materials: Answer Booklet

READ THESE INSTRUCTIONS FIRST

Write your name and class in the spaces at the top of this page.

Write in dark blue or black pen.

You may use an HB pencil for any diagrams or graphs.

Do not use staples, paper clips, highlighters, glue or correction fluid/tape.

The use of an approved scientific calculator is expected, where appropriate.

Answer **ALL** questions.

The Insert contains all the Resources referred to in the questions.

You should make reference to appropriate examples studied in the field or the classroom, even where such examples are not specifically requested by the question.

Diagrams and sketch maps should be drawn whenever they serve to illustrate an answer.

The world outline map may be annotated and handed in with relevant answers.

You are reminded of the need for good English and clear presentation in your answers.

At the end of the exam, insert the extra booklet(s) used within the main booklet.

The number of marks is given in brackets [] at the end of each question or part question.

Section A

Cluster 2 : Fieldwork

Needs analysis of the elderly in the Yishun Neighbourhood

- 1 As part of a Geography fieldwork study to analyse the liveability of the Yishun neighbourhood for the elderly, a group of seven 18 year-old students from Yishun Innova Junior College were tasked to investigate whether the neighbourhood surrounding their College is considered 'healthy' for the elderly.

According to the World Health Organization (WHO), a 'healthy' city is one that "improves its physical and social environments in order for its residents to perform all the functions of life and develop to their maximum potential." It includes promoting walking and cycling for short-distance travel, encouraging green practices within the city and its residents and creating a more inclusive community.

The students' research question was "Does the design of the neighbourhood encourage physical activities to support healthy communities?" To explore this, they carried out a survey of seven locations within Yishun Avenue 2 to look for urban design features which, based on their secondary research, were found to have promoted healthy living in several Australian neighbourhoods.

As the students need to preset their findings to their classmates, the students had only 3 days during the National Day's break in in August 2023 to carry out the investigation, they decided to split up and work individually at each location selected.

Resource 1 shows the map of the neighbourhood surrounding Yishun Innova Junior College. Resource 2 shows the list of selected urban design features found to promote healthy living in Australia. Resource 3 is a sample of the recording sheet the students used while Resource 4 shows a screen capture of selected results of their investigation which the group presented to their classmates.

- (a) With reference to Resource 1, evaluate the suitability of the students' [3]
research question.
- (b) Using Resource 2 and your own knowledge, explain the strengths and [6]
limitations of the data collected using the recording sheet shown in Resource
3.
- (c) Identify one challenge that the students may face when conducting the [3]
investigation and suggest how it can be overcome.

- (d) During the class presentation, some classmates reflected that they found the data shown in Resource 4 'confusing'. Explain how the data in Resource 4 could be 'confusing' and how it might be better represented. [5]
- (e) Using all available information, evaluate the usefulness of the students' investigation in understanding the 'health' of the neighbourhood for elderly. [6]

Section B

Cluster 1 Sustainable Future and Climate Change

Housing Development in Thailand

- 2** In Thailand, 27% of the urban population is living in slums. Social (public) housing is government-owned housing dedicated to low-income population. Several organisations help run social housing projects in Thailand, such as the National Housing Authority (NHA), the Government Housing Bank (GHB) and the Government Saving Bank (GSB). Habitat for Humanity also provides assistance through volunteering programs to build affordable housing.

Resource 5 shows the changes in liveability scores for cities based on the Employment Conditions Abroad's (ECA) Global Liveability Index. Resources 6 shows slums in Thailand and 7 show social public housing developments in Thailand.

- (a) Describe the changes in liveability score as shown in Resource 5. [3]
- (b) Using Resource 5, suggest reasons for why study on liveability may be unreliable. [4]
- (c) With reference to Resource 6, explain the possible tensions between slums and sustainable urban development. [5]
- (d) Describe and explain the features with evidence from Resource 7 which are designed to increase the liveability of the residential neighbourhood. [5]
- (e) Using Resources 6 and 7, and your own knowledge, explain why public housing development might be considered unsustainable for less developed cities. [5]

Section C

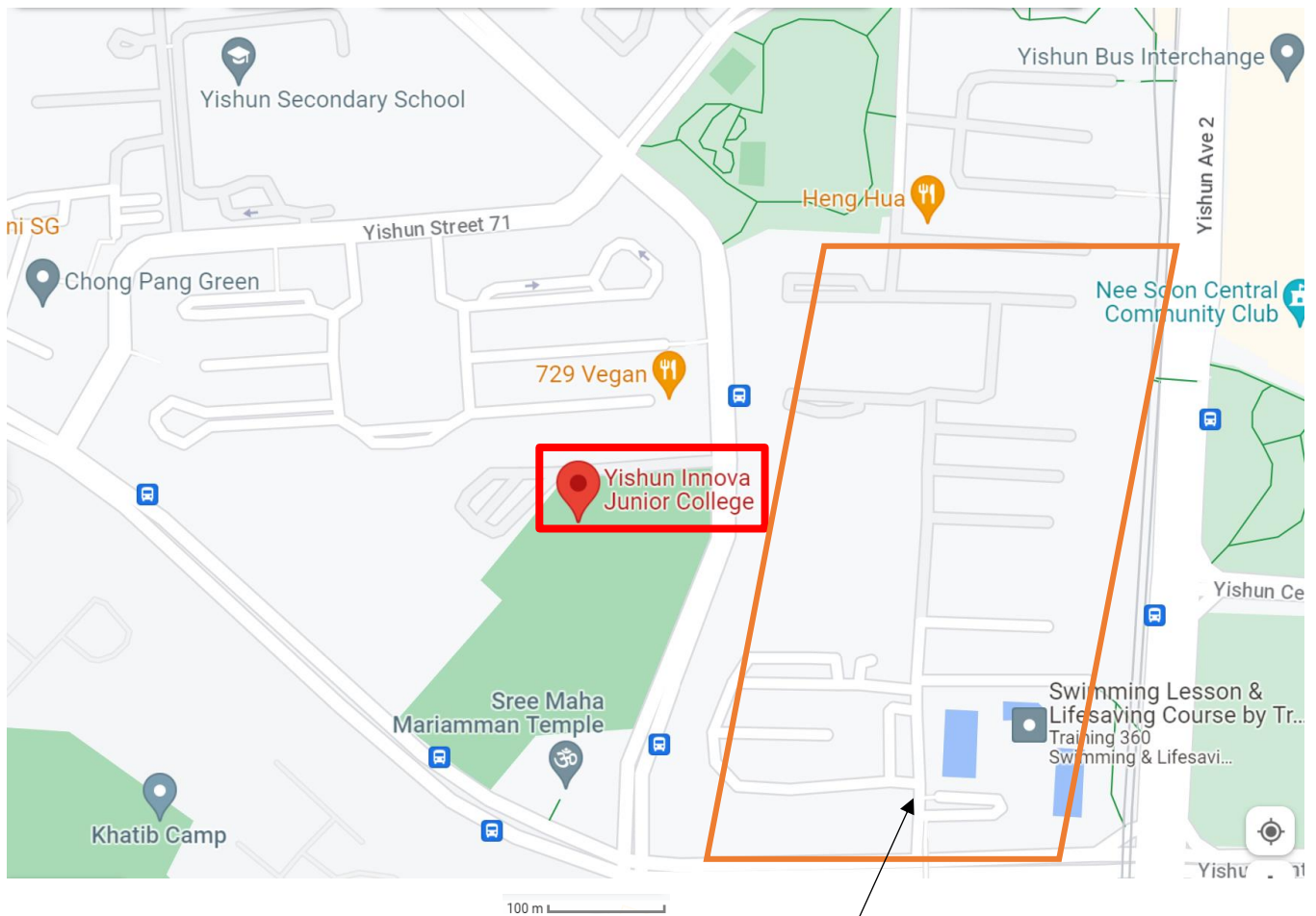
Cluster 1 Sustainable Future and Climate Change

Answer Question 3

- 3** Assess the effectiveness of the reimaging strategies in improving the well-being of the city dwellers. [13]

[Total : 58 marks]

INSERT

Resource 1 for Question 1**Map of the neighbourhood surrounding Yishun Innova Junior College**

Research area
comprising locations
A to G

Resource 2 for Question 1

Urban design features (in no particular order) found to have promoted healthy living within Australian cities

- 1. Mixed land uses**
- 2. Dedicated pedestrian infrastructure; e.g. walkways**
- 3. Cycling infrastructure; e.g. bike lanes, bike boulevards for bike parking**
- 4. Public parks and other green spaces**
- 5. Public plazas and community facilities**
- 6. Presence of key nodes of public transport (e.g. bus interchanges, train stops)**

Resource 3 for Question 1
Recording sheet

Researcher: _____

Date: _____

Location: _____

Time (start): _____ Time (end): _____

	Urban design features	Observed Yes/No	If yes, details
<i>Promoting community activities within the neighbourhood</i>			
1.	Presence of open green spaces		- Size? - Without obstructions? - Sheltered?
2	Presence of void decks		- Size? - Without obstructions?
<i>Promoting walking within the neighborhood</i>			
3.	Presence of dedicated pedestrian walkways from blocks to central shopping area (e.g., Northpoint)		- Width? - Without obstructions? - Sheltered?
4.	Presence of dedicated pedestrian walkways from blocks to other recreational facilities		- Width? - Without obstructions? - Sheltered?
5.	Presence of dedicated pedestrian walkways from blocks to public transportation (to pre-identified bus stops)		- Width? - Without obstructions? - Sheltered?
6.	Presence of dedicated pedestrian walkways from blocks to public transportation (to train station)		- Width? - Without obstructions? - Sheltered?
<i>Promoting cycling within the neighborhood</i>			
7	Presence of dedicated cycling paths from blocks to central shopping area (e.g., Northpoint)		- Width? - Without obstructions? - Sheltered?
8.	Presence of dedicated pedestrian walkways from blocks to other recreational facilities		- Width? - Without obstructions? - Sheltered?
9.	Presence of dedicated pedestrian walkways from blocks to public transportation (to pre-identified bus stops)		- Width? - Without obstructions? - Sheltered?
10.	Presence of dedicated pedestrian walkways from blocks to public transportation (to train station)		- Width? - Without obstructions? - Sheltered?
11.	Presence of dedicated cycling infrastructure (e.g. parking areas)		- What type of infrastructure?

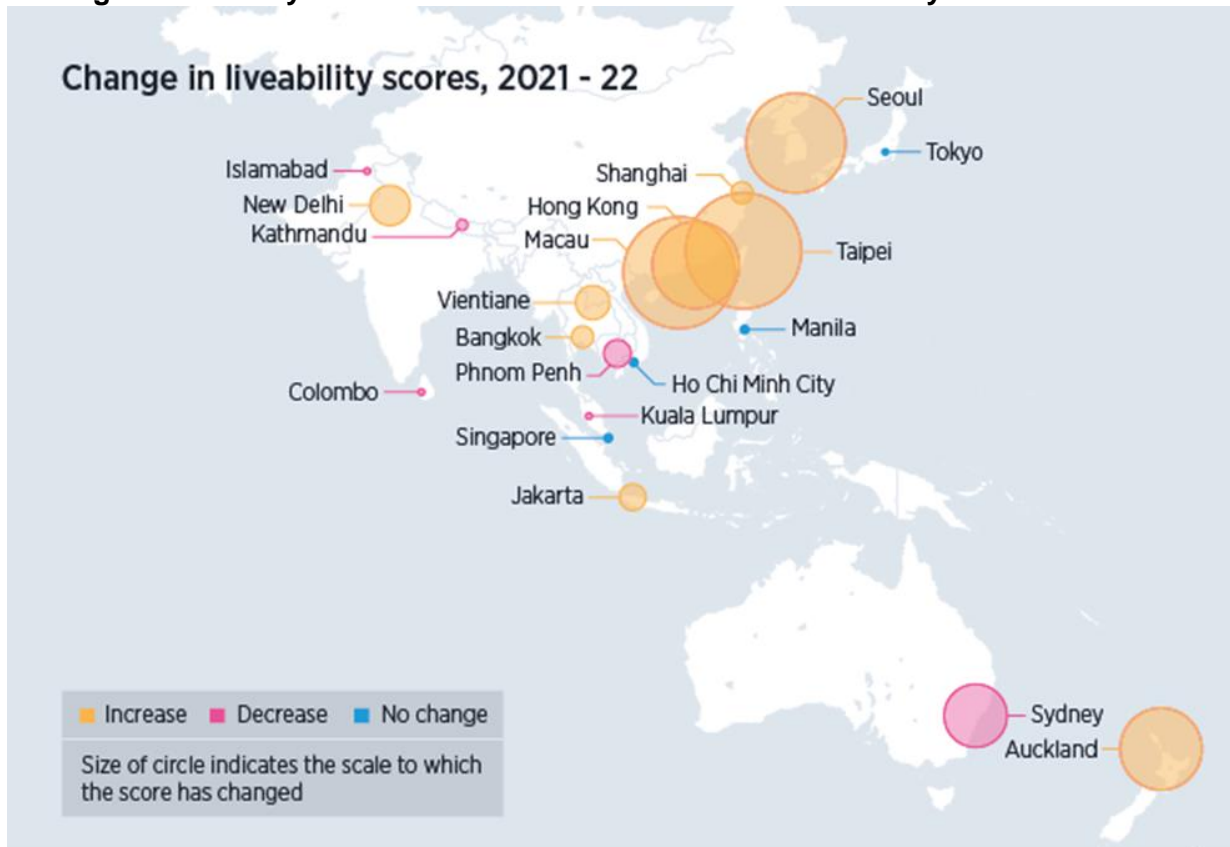
Resource 4 for Question 1

Selected results of the survey

Location	A	B	C	D	E	F	G
Presence of dedicated pedestrian walkways							
From blocks to central shopping area	YES	NO	YES	YES	NO	NO	NO
From blocks to other recreational facilities	NO	NO	NO	YES	YES	YES	YES
From blocks to public transportation (to pre-identified bus stops)	NO	YES	YES	YES	YES	NO	NO
From blocks to public transportation (to train station)	YES	NO	NO	YES	YES	YES	YES

Resource 5 for Question 2

Change in liveability score from 2021 to 2022 for selected cities by ECA International



Source : Employment Conditions Abroad International (ECA). The ECA develops and provides solutions for the management and assignment of employees worldwide.

Resource 6 for Question 2

Khlong Toei slums in Bangkok, Thailand



Source : <https://www.istockphoto.com/photo/slum-shacks-in-central-bangkok-gm636897790-113279691?phrase=bangkok+slum>

Resource 7 for Question 2

Affordable housing development in Thailand



End of document

Blank Page