



Humanities Department  
H2 Geography (9173)

Name: \_\_\_\_\_ Class: \_\_\_\_\_

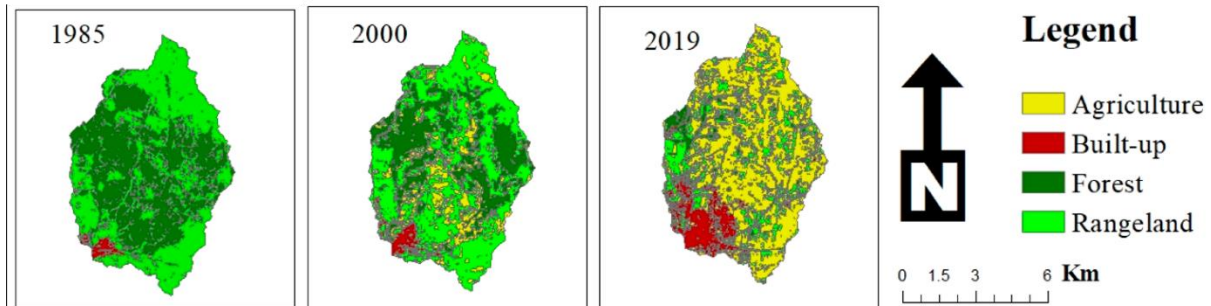
Duration: 1 h 30 mins

**2023 Senior High 1 H2 Geography Seminar Test 1 - INSERT**

**INSTRUCTIONS**

This Insert contains all the Resources referred to in the questions.

**Resource 1 for Question 1**  
**Land use changes within the Enkare Narok drainage basin**



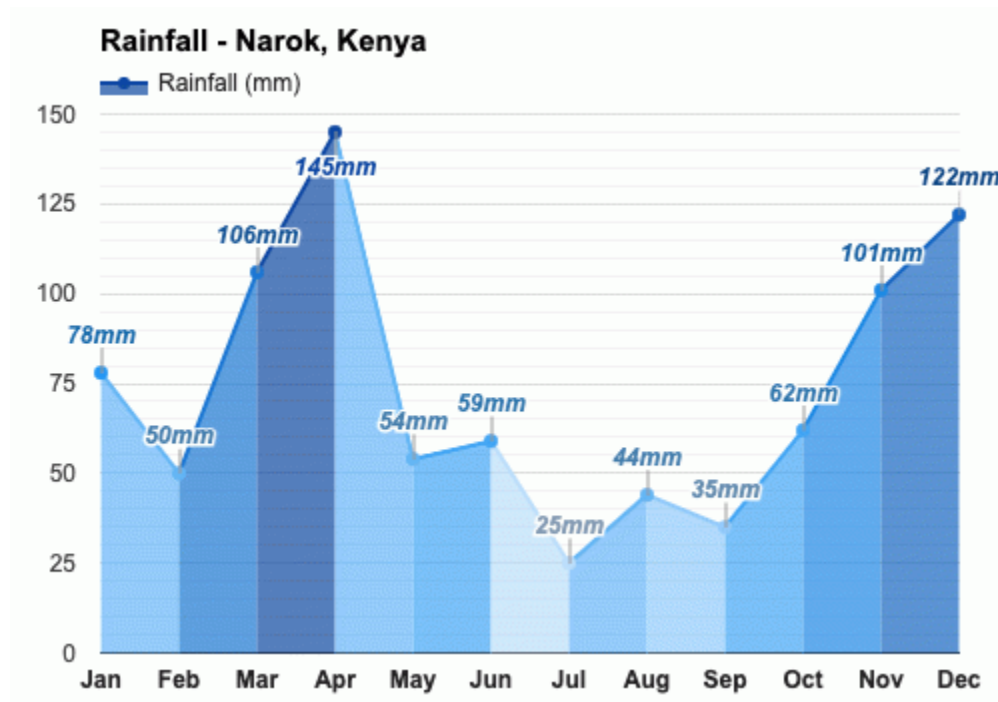
Percentage of land use cover of the Enkare Narok drainage basin between 1985 and 2019

Land Use	Description	1985	2000	2019	Changes in land use (1985-2019)
Agriculture	Lands covered with temporary crops. Crop fields and pastures	0	15.6	55.4	55.4
Build-up areas	Land covered by buildings, industrial area, and roads	1.9	3.0	12.5	10.6
Forest	Lands dominated by trees (height of at least 2 metres) with more than 60% cover	46.5	28.3	6.2	-40.3
Rangeland	Land covered by grasslands that are grazed by domestic livestock or animals	51.6	53.1	25.9	-25.7

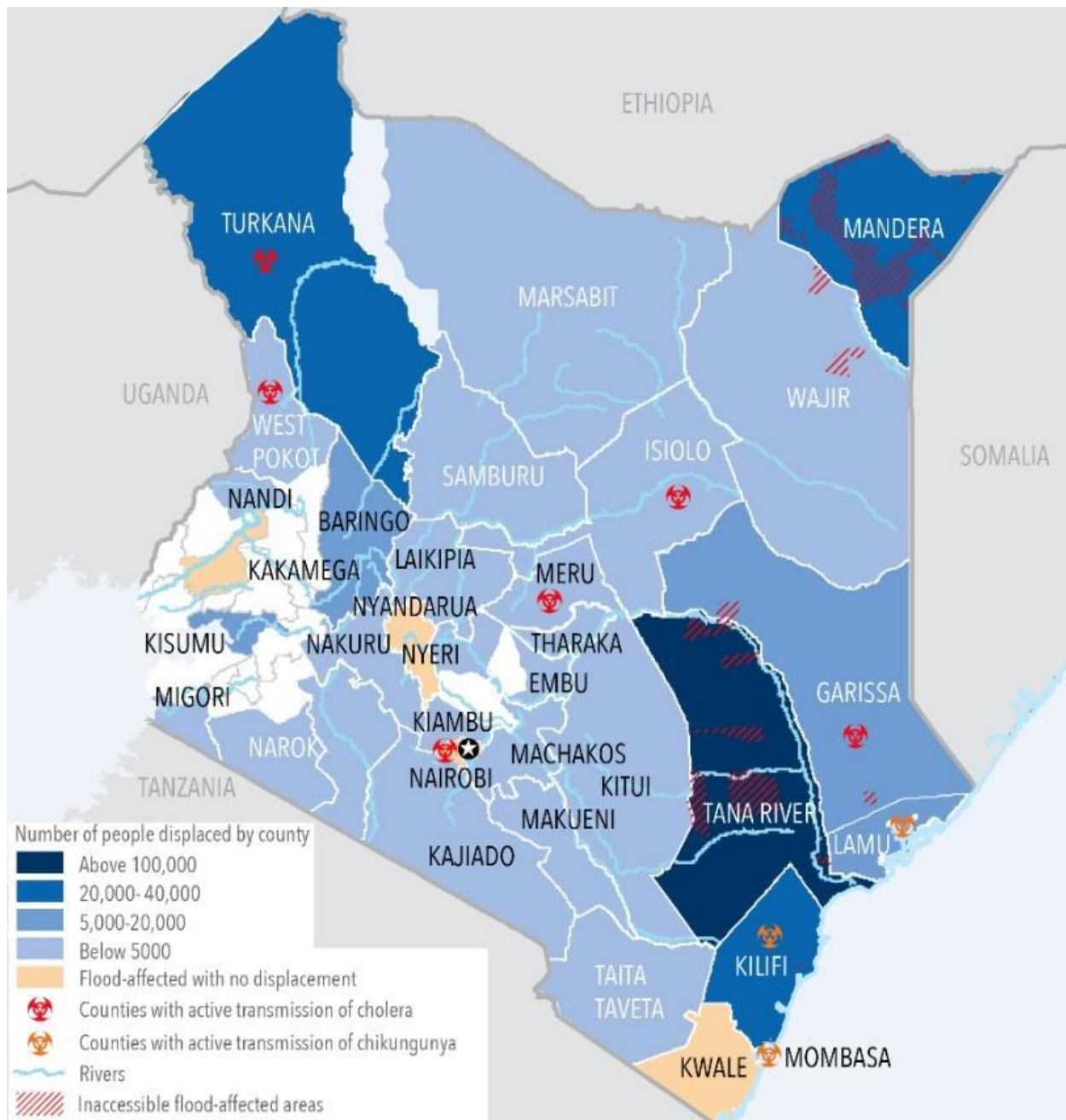
**Resource 2 for Question 1**  
**Aerial view of a section of the Enkare Narok River**



**Resource 3 for Question 1**  
**Monthly average rainfall of Narok County**



### Resource 4 for Question 1 Flood risk map of Kenya



Resource 1 for Question 1

Resource 2 for Question 1

Resource 3 for Question 1

Resource 4 for Question 1

© adapted: Marie Mireille, N., M. Mwangi, H.; K. Mwangi, J.; Mwangi Gathenya, J. (2019) Analysis of land use change and its impact on the hydrology of Kakia and Esamburmbur sub-watersheds of Narok County, Kenya. *Hydrology*, 6(4). <https://doi.org/10.3390/hydrology6040086>

© Google Earth (last accessed 14 March 2023)

<https://www.weather-atlas.com/en/kenya/narok-climate> (last accessed 14 March 2023)

<https://jftacademy.com/flood-risk-maps/> (last accessed 14 March 2023)