

Anglo-Chinese School

(Independent)



PRELIMINARY EXAMINATION 2024 YEAR FOUR EXPRESS

Candidate Name

Index Number

HUMANITIES

Paper 2 Geography

2260/02

Wednesday

7 August 2024

1 hour 45 minutes

Candidates answer on the Question Paper.

Additional Materials: Insert

READ THESE INSTRUCTIONS FIRST.

Write your name and index number on all the work you hand in.

Write in dark blue or black pen.

You may use a 2B pencil for any diagrams or graphs.

Do not use staples, paper clips, glue or correction fluid.

Answer **three** questions in total:

Section A

Answer Question 1 **and** Question 2.

Section B

Answer either Question 3 **or** Question 4.

Marks	50
--------------	-----------

The Insert contains additional resources referred to in the questions.

The number of marks is given in brackets [] at the end of each question or part question.

This document consists of **17** printed pages, **1** blank page and **1** Insert.

[Turn Over

Section A

Answer Question 1 **and** Question 2.

1 Cluster 1: Geography in Everyday Life

- (a) Study Fig. 1.1 (Insert), which shows a type of hazard.

Describe the hazard and explain its impacts on the residents staying close by.

.....

.....

.....

.....[2]

- (b) Study Fig. 1.2 (Insert), which shows the number of residential fires and number of deaths and injuries to civilians in an area between 1977 to 2017.

- (i) Compare the trend in the number of residential fires and deaths to civilians between 1977 to 2017.

.....

.....

.....

.....[2]

- (ii) Explain how building community resilience might reduce the risk of residential fires.

.....

.....

.....

.....[2]

- (c) A group of students wanted to investigate the relationship between the number of amenities and elderly visitors at nature parks. They divided themselves into groups and selected three nature parks to conduct their questionnaire surveys to 20 visitors on a weekend.

They decided to test the hypothesis:

‘Nature parks with more amenities attract more elderly visitors’.

- (i) Identify the sampling method they could use for the investigation and describe how it can be conducted.

.....

.....

.....

.....

.....

.....

.....

.....

[3]

(ii) Fig. 1.3 shows their survey results.

	Park A	Park B	Park C
Number of amenities at the park (carparks, toilets, sheltered benches, vending machines)	4	2	6
Age of visitors (in years)	<i>Below 20 – 4 21 to 40 - 6 41 to 60 - 5 Above 60 - 5</i>	<i>Below 20 - 8 21 to 40 - 4 41 to 60 - 6 Above 60 - 2</i>	<i>Below 20 - 2 21 to 40 - 3 41 to 60 - 5 Above 60 - 10</i>

Fig. 1.3

Describe how the students collected the data shown in Fig. 1.3.

.....

.....

.....

.....

.....

.....[3]

(iii) Explain how the students could ensure that the data collected was reliable.

.....

.....

.....

.....[2]

[Total: 14]

2 Cluster 2: Tourism

- (a) Study Fig. 2.1 (Insert), which shows some activities at a beach resort at Sibu Island in Malaysia.

- (i) With reference to Fig. 2.1, explain why adventure tourists might be attracted to visit Sibu Island.

.....

.....

.....

.....

.....

.....[3]

- (ii) Explain how tourists' motivation to travel led to the growth of tourism in Sibu Island.

.....

.....

.....

.....[2]

- (iii) Explain why conservationists are concerned with the large number of tourists at Sibu Island.

.....

.....

.....

.....[2]

- (iv) Explain **two** unexpected events that can cause the economic benefits from tourism at Sibu Island to fluctuate.

.....

.....

.....

.....[2]

- (v) Explain how tourism development in Sibu Island contributes to social and environmental sustainability.

.....

.....

.....

.....

.....

.....

.....

.....[4]

- (b) (i)** Using named examples, compare between community-based tourism and ecotourism.

[illegible]

- (ii) Explain the limitations of community-based tourism.**

.....

.....

.....

.....

[Total: 18]

3 Cluster 3: Climate

- (a)** Study Fig. 3.1 (Insert), which shows a climate graph of Mangalore in India.

Account for the rainfall pattern shown in Fig. 3.1.

.....

.....

.....

.....

.....

.....[3]

- (b)** Study Fig. 3.2 (Insert), which shows the top carbon emitting countries in 2022.

Using information from Fig. 3.2, explain why some countries produced high carbon dioxide emissions.

.....

.....

.....

.....

.....

.....[3]

- (c) Study Figs. 3.3 to 3.5 (Insert), which shows three mitigation strategies adopted by Singapore to reduce greenhouse gas emissions.

Identify and describe the mitigation strategies shown.

.....

.....

.....

.....

.....

.....[3]

- (d) "Latitude is the most important factor affecting temperature at a location."

To what extent do you consider this statement to be true? Use examples to support your answer.

.....

.....

.....

.....

.....

.....

.....

.....

.....

.....

.....

.....

Cluster 4: Tectonics

- 4 (a) Study Fig. 4.1 (Insert), which shows the impact of the 2004 tsunami on a village in Indonesia.

Using information from Fig. 4.1 only, describe the impact of tsunamis on human systems.

.....

.....

.....

.....[2]

- (b) Study Fig. 4.2, which shows an article on the eruption of Mount Popocatepetl in Mexico in 2023.

For months now, the volcano has been spewing molten rock and shooting massive columns of ash into the sky. The eruptions have grown bigger and more frequent in recent weeks — rattling homes with wheezing exhalations that residents compare to steam escaping from a pressure cooker. Bone-gray ash blankets everything: cars, crops and even the dogs that beg for scraps in the streets.

The sheer quantity of ash — a mixture of rock, mineral and glass particles from deep inside the volcano — has prompted officials to ground thousands of flights at airports in nearby Mexico City and Puebla and to suspend school in nearly two dozen municipalities.

On Sunday, officials raised the volcano threat level to “Yellow Phase 3,” which calls for those who live nearest to the volcano — including the 2,000 residents of Santiago Xalitzintla — to prepare for possible evacuation.

It has been centuries since the volcano last expelled a significant flow of lava.

Fig. 4.2

- (i) What type of volcano is Mount Popocatepetl?

.....

.....[1]

- (ii) Using information from Fig. 4.2 only, describe the hazards associated with the eruption of Mount Popocatepetl.

.....

.....

.....

.....[2]

- (iii) Explain why some choose to stay near Mount Popocatepetl despite the risk.

.....

.....

.....

.....[2]

- (iv) Suggest some strategies that the Mexican government can implement to reduce the risks of volcanic eruptions.

.....

.....

.....

.....[2]

- (c)** “Short-term responses after an earthquake are more effective in saving lives than long-term responses.”

To what extent do you consider this statement to be true? Use examples to support your answer.

[illegible]

Additional page

Additional page

Copyright Acknowledgements:

- Question 1 Fig. 1.1 <https://i.pinimg.com/originals/9c/2a/b8/9c2ab878513d017ddd5e7943f0eb7afb.jpg>
- Question 1 Fig. 1.2 <https://www.bu.edu/sph/files/2017/06/lessons-from-fire-prevention-fig-1.png>
- Question 2 Fig. 2.1 <https://www.sgmytaxi.com/wp-content/uploads/Things-To-Do-in-Pulau-Sibu.jpg>
- Question 3 Fig. 3.1 https://www.thephysicalenvironment.com/Book/climate_systems/mangalore.jpg
- Question 3 Fig. 3.2 https://ichef.bbci.co.uk/news/1024/cpsprodpb/67D5/production/_121318562_qhqukkjs.png.webp
- Question 3 Fig. 3.3 <https://www.ukri.org/wp-content/uploads/2021/08/NERC-170821-MangroveForest-GettyImages-157442153-e1629209229983.jpg>
- Question 3 Fig. 3.4 <https://th.bing.com/th/id/OIP.2D9P-GSAPR7RulrVy6Pc7gAAAA?rs=1&pid=ImgDetMain>
- Question 3 Fig. 3.5 <https://juicingcity.com/wp-content/uploads/2020/10/canstockphoto82076886.jpg>
- Question 4 Fig. 4.1 https://images.hindustantimes.com/rf/image_size_630x354/HT/p2/2020/08/06/Pictures/topshot-indonesia-disaster-tsunami-volcano_510ed7e8-d7fd-11ea-8122d3bbe1b049d5.jpg
- Question 4 Fig. 4.2 <https://www.latimes.com/world-nation/story/2023-05-25/mexico-volcano-popocatepetl-erupts-threatening-millions>

BLANK PAGE

Anglo-Chinese School
(Independent)



PRELIMINARY EXAMINATION 2024
YEAR FOUR EXPRESS

HUMANITIES
Paper 2 Geography

2260/02

INSERT

Wednesday

7 August 2024

1 hour 45 minutes

READ THESE INSTRUCTIONS FIRST

This Insert contains additional resources referred to in the question.

This document consists of **6** printed pages.

[Turn Over

Fig. 1.1 for Question 1(a)



Fig. 1.2 for Question 1(b)

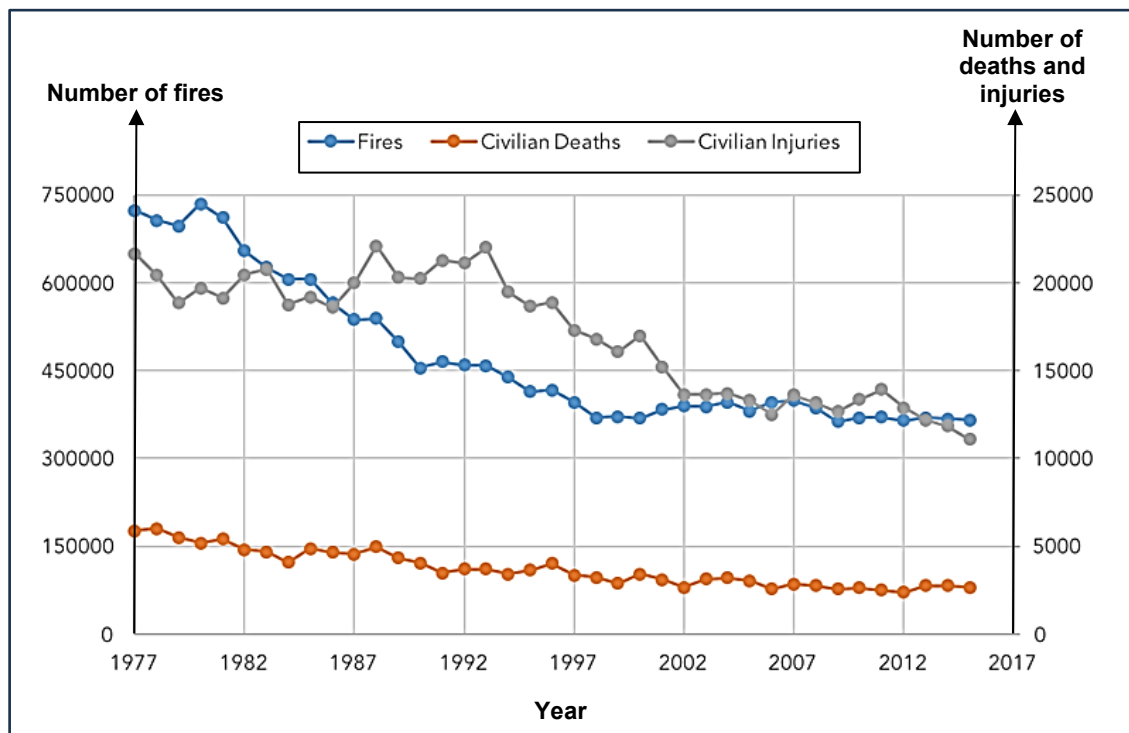


Fig. 2.1 for Question 2(a)

Activities in Sibu Island



Fig. 3.1 for Question 3(a)

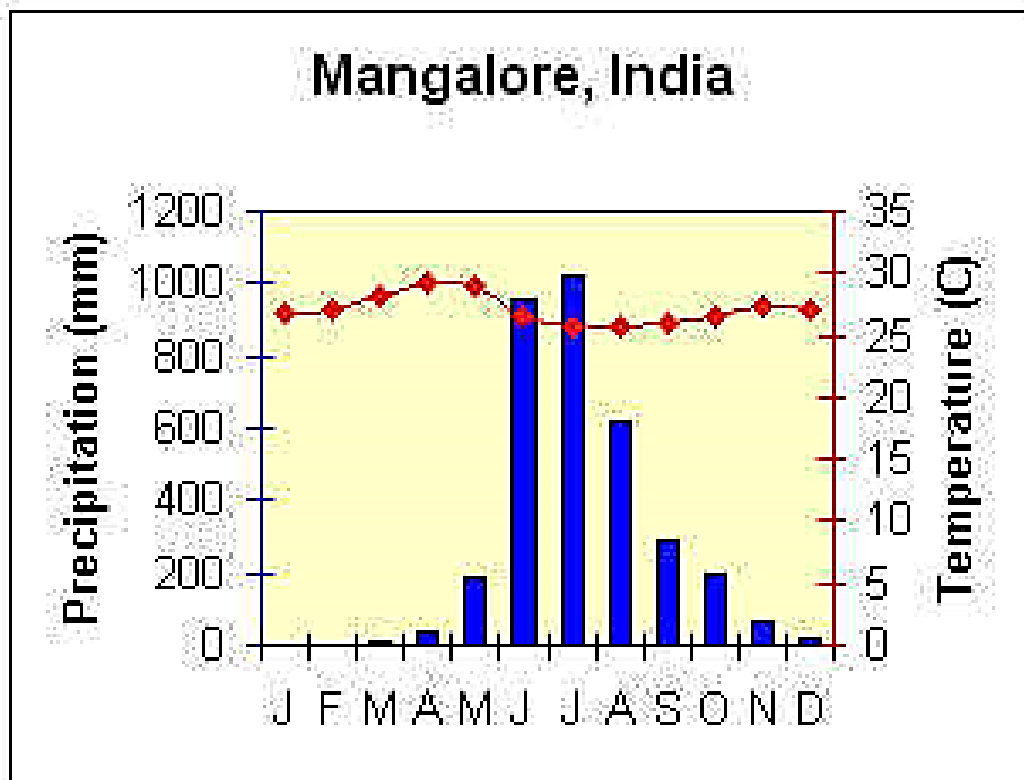


Fig. 3.2 for Question 3(b)

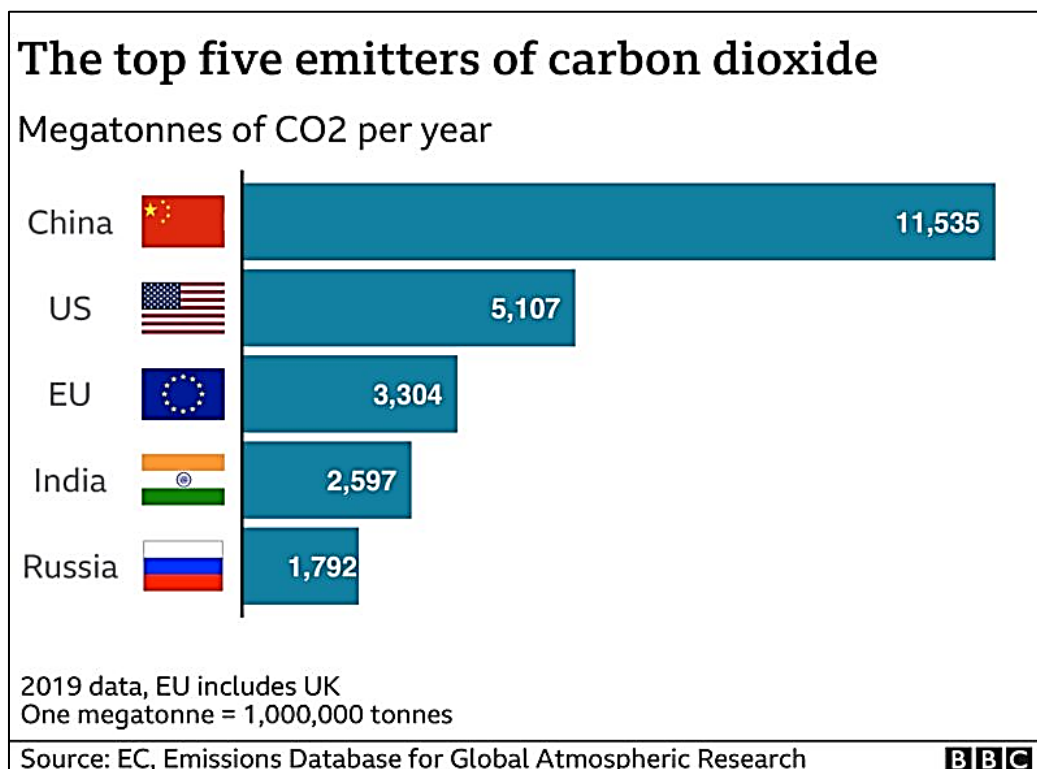


Fig. 3.3 to Fig. 3.5 for Question 3(c)



Fig. 3.3



Fig. 3.4



Fig. 3.5

Fig. 4.1 for Question 4(a)

