



SERANGOON JUNIOR COLLEGE
JC2 PRELIMINARY EXAMINATION 2018
Higher 2

GEOGRAPHY

9751/02

Paper 2 Data Response Questions

INSERT

Wednesday
19 Sept 2018
3 hours

READ THESE INSTRUCTIONS FIRST

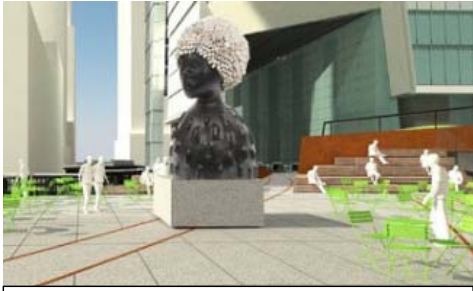
This insert contains all the Resources referred to in the questions.

This document consists of **13** printed pages and **1** blank page

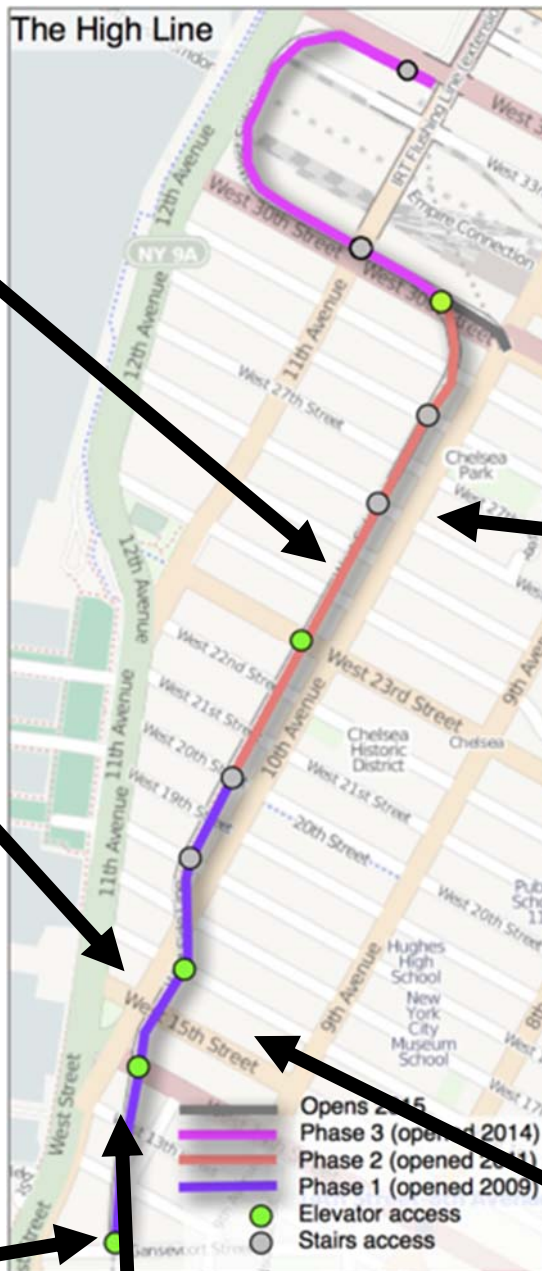
[Turn over

Resource 1 for Question 1

Map of the High Line, New York (USA)



The Plinth : Location for public art installations



Chelsea-Elliott public housing estate



Standard Hotel : 18 Floor hotel that is renowned for its distinctive architecture.



Whitney Museum of American Art : Features art pieces from famous artists such as Andy Warhol and Jackson Pollack.



Chelsea Market : Consists of 38 vendors which serve up a range of dining options that include sushi, lobster, cheese and breads.



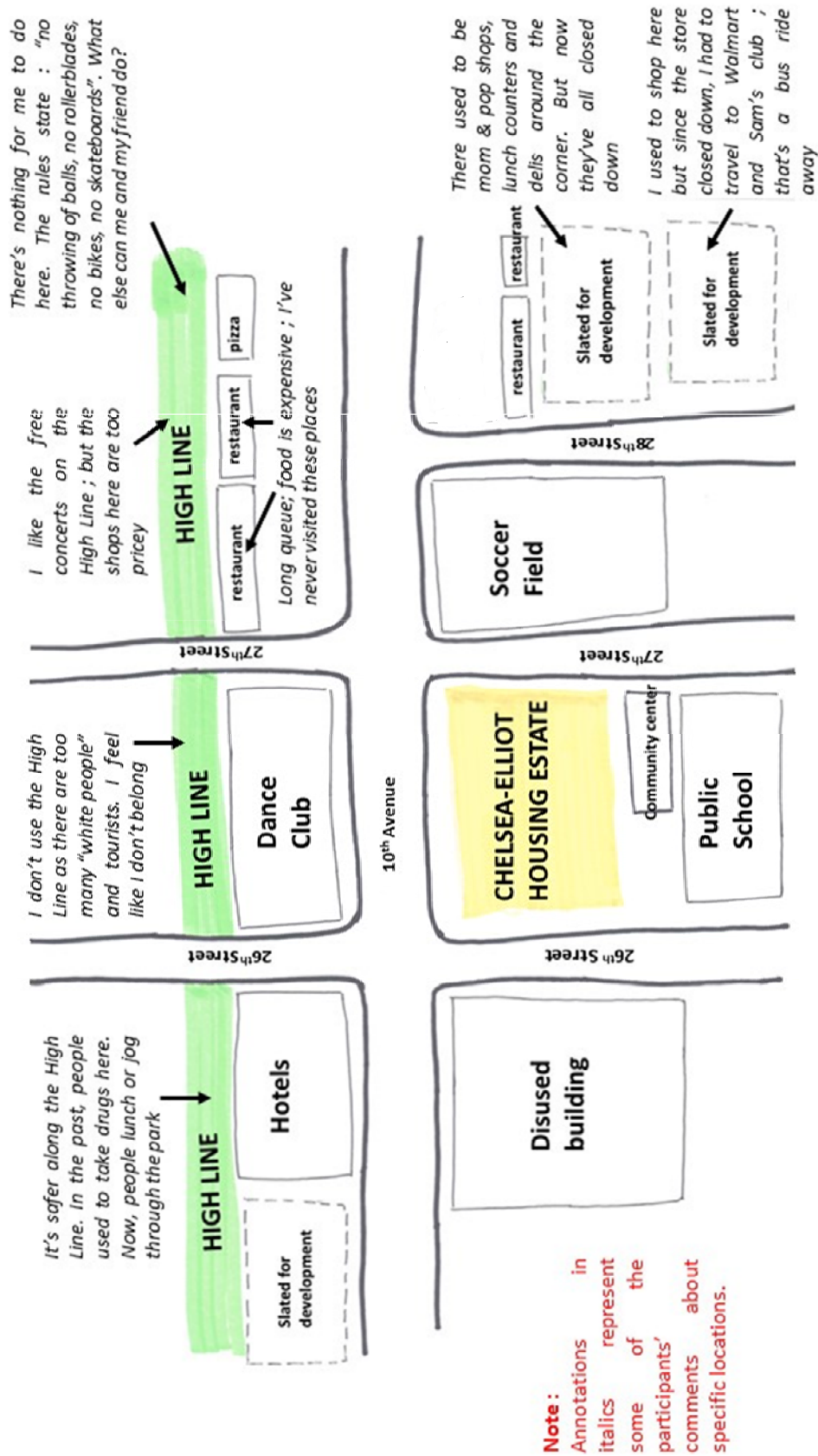
A section of the High Line

Resource 2 for Question 1**Breakdown of respondents by age and ethnicity**

	Focus Group 1	Focus Group 2	Focus Group 3
Ethnicity	African-American and Latino	African-American	White
Age range	40 - 60	19 - 30	20 – 50

Resource 3 for Question 1

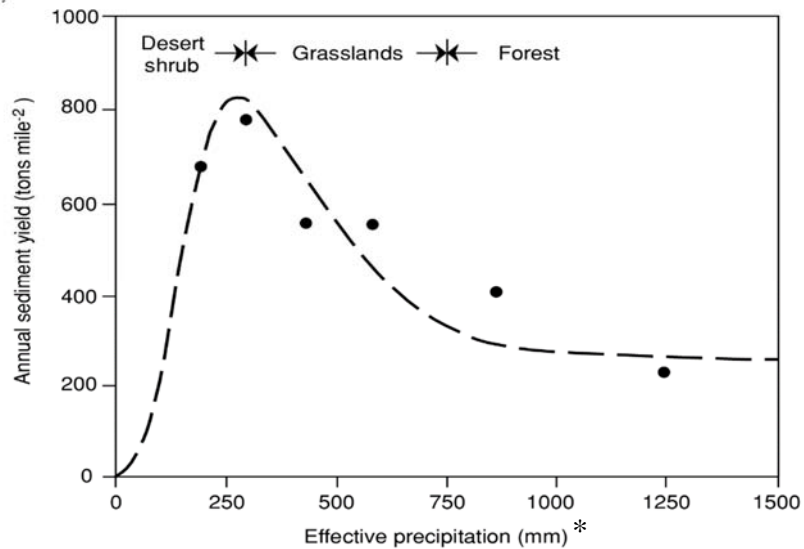
Sample of a mental map



Resource 4 for Question 2

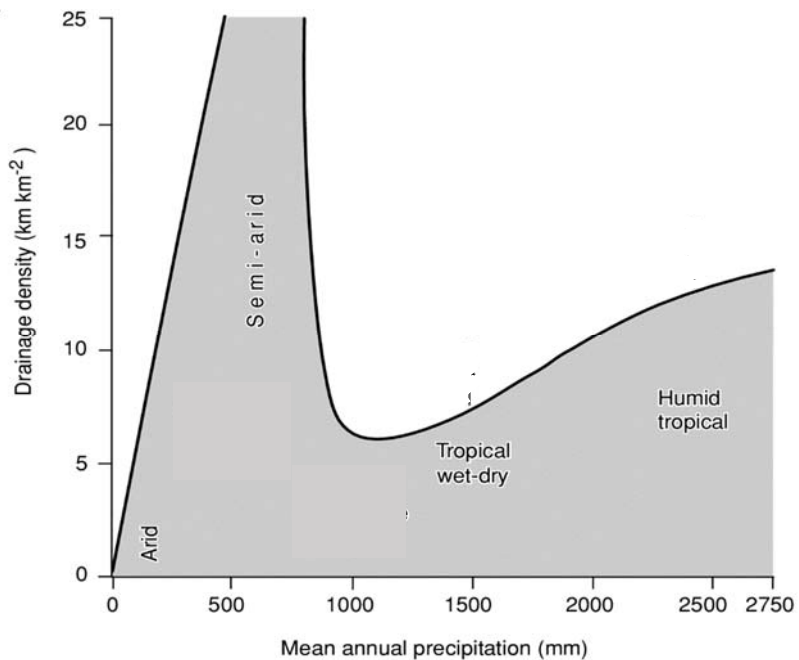
Sediment yield and drainage density in different tropical climates

Resource 4a
Sediment yield in different tropical climates



**Note : Effective precipitation is the amount of precipitation required to produce a known amount of surface runoff*

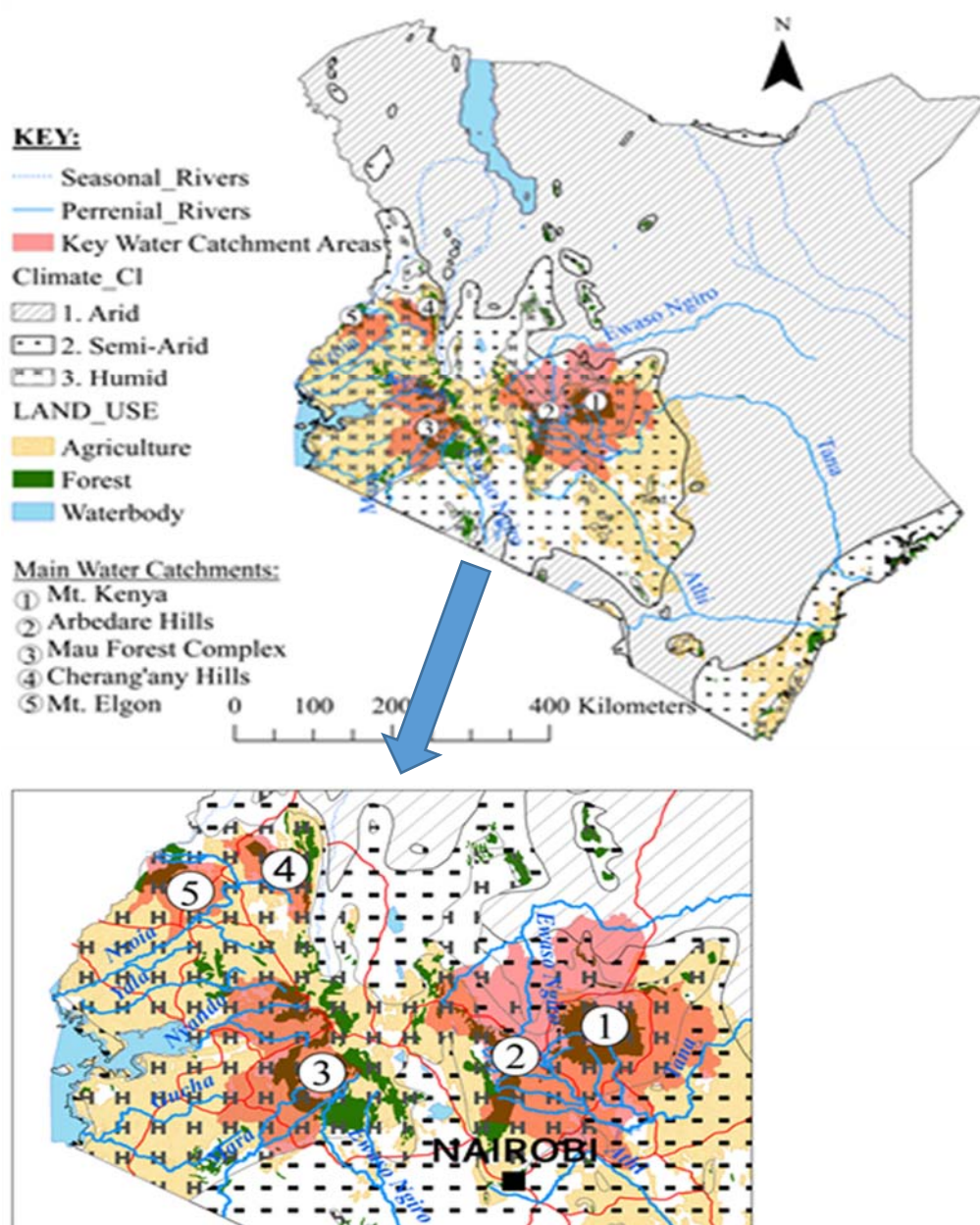
Resource 4b
Drainage density in different tropical climates



Resource 5 for Question 2**A river form in a tropical region**

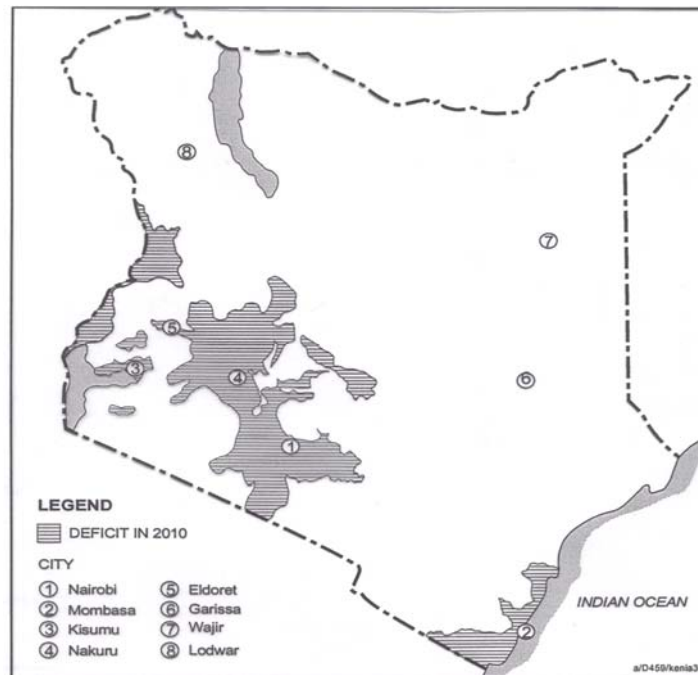
Resource 6 for Question 3

Main water catchments in Kenya



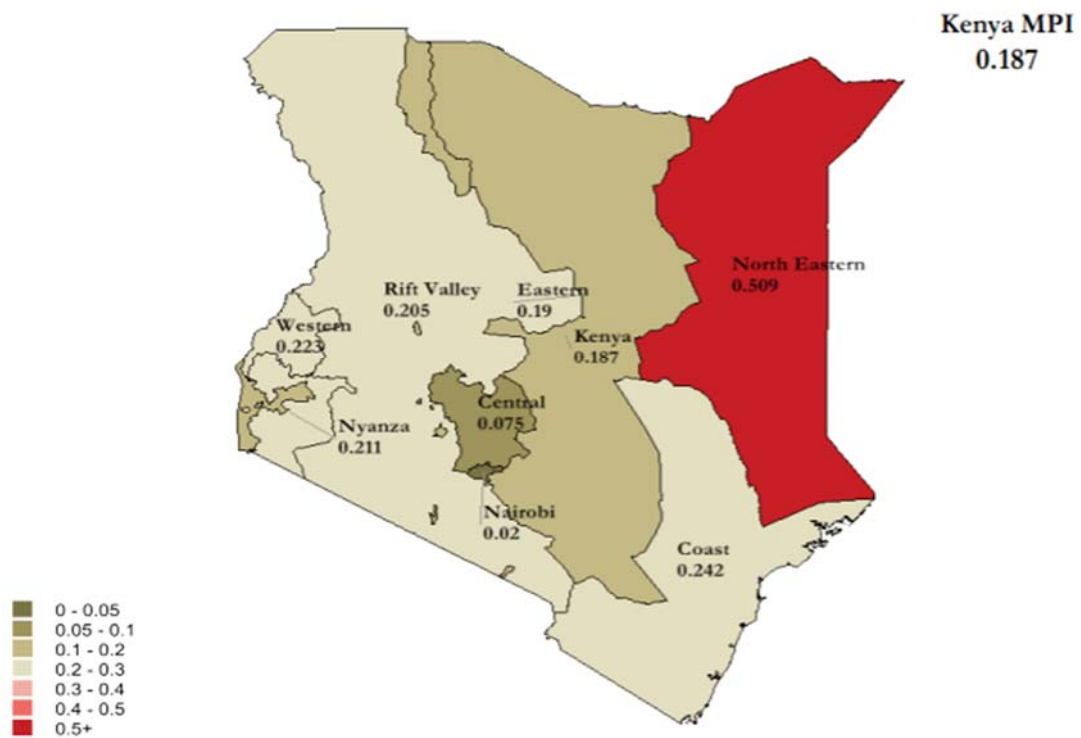
Resource 7 for Question 3

Regions of water deficit in Kenya



Resource 8 for Question 3

Multidimensional poverty index (MPI) in different regions of Kenya



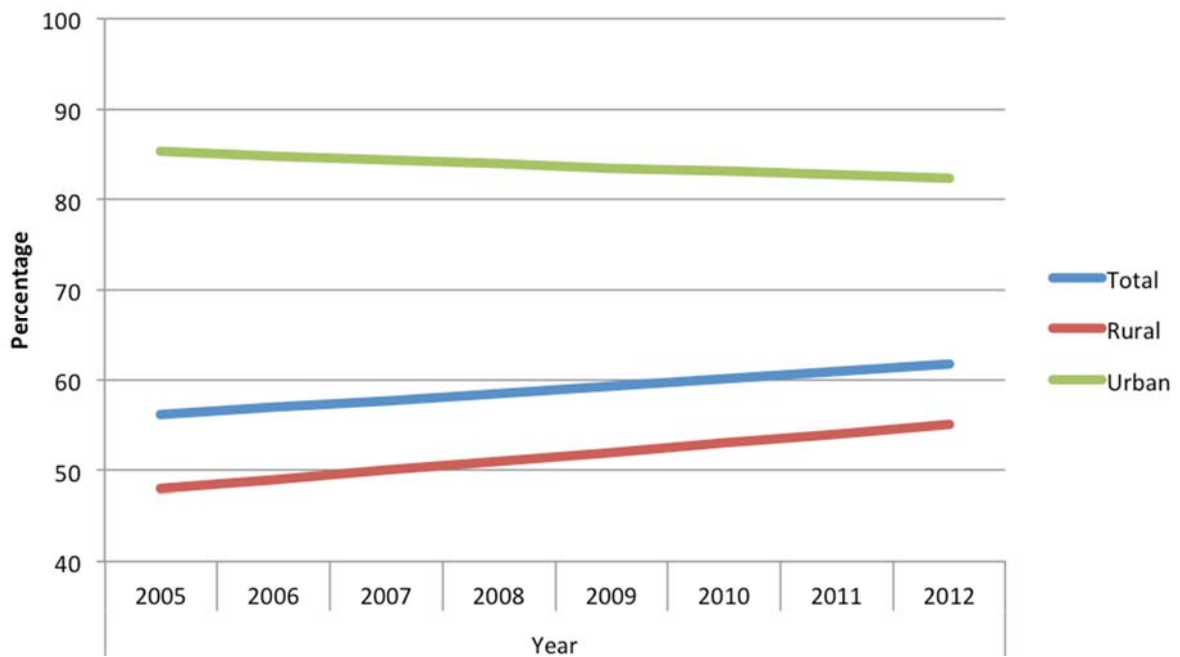
Resource 9 for Question 3

Sustainable Development Goals (SDG) 4, 5 and 6



Resource 10 for Question 3

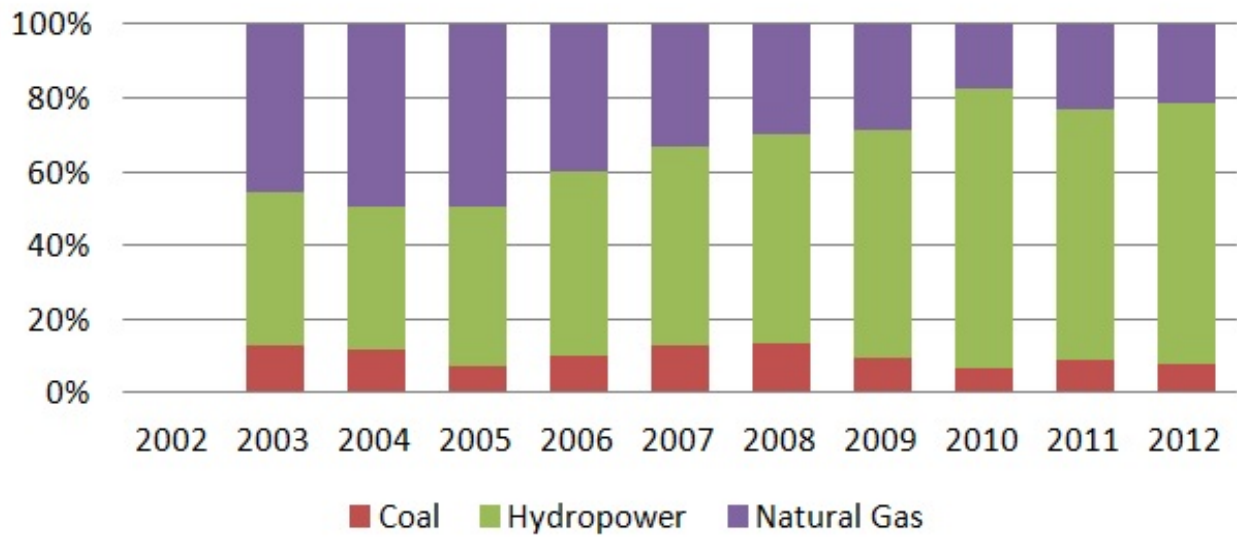
Percentage of population with access to improved water sources * in Kenya



**Improved water sources refer to potable water sources such as piped water, rain harvested water and water from protected wells*

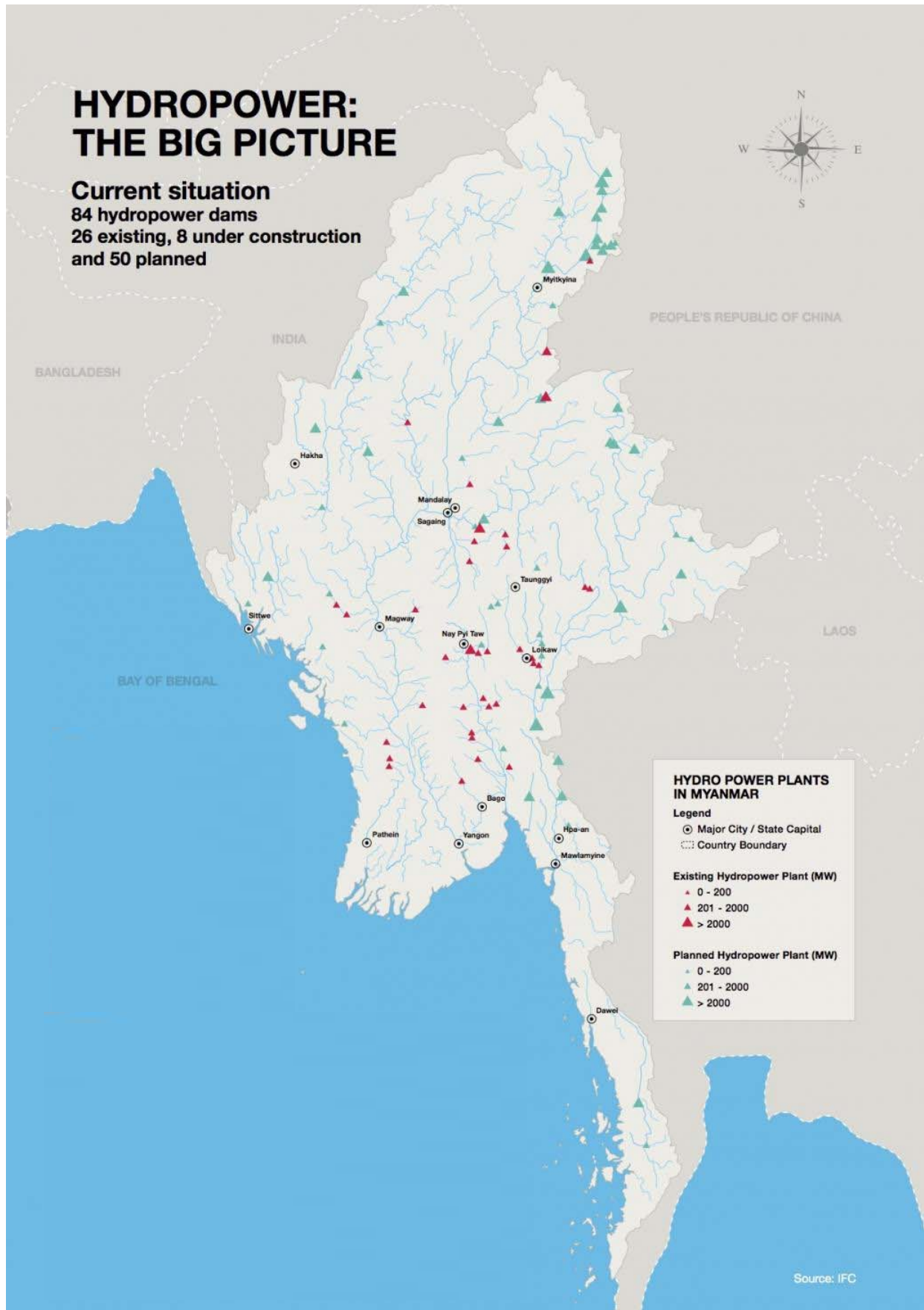
Resource 11 for Question 4

Myanmar's electricity production by source from 2003 to 2012



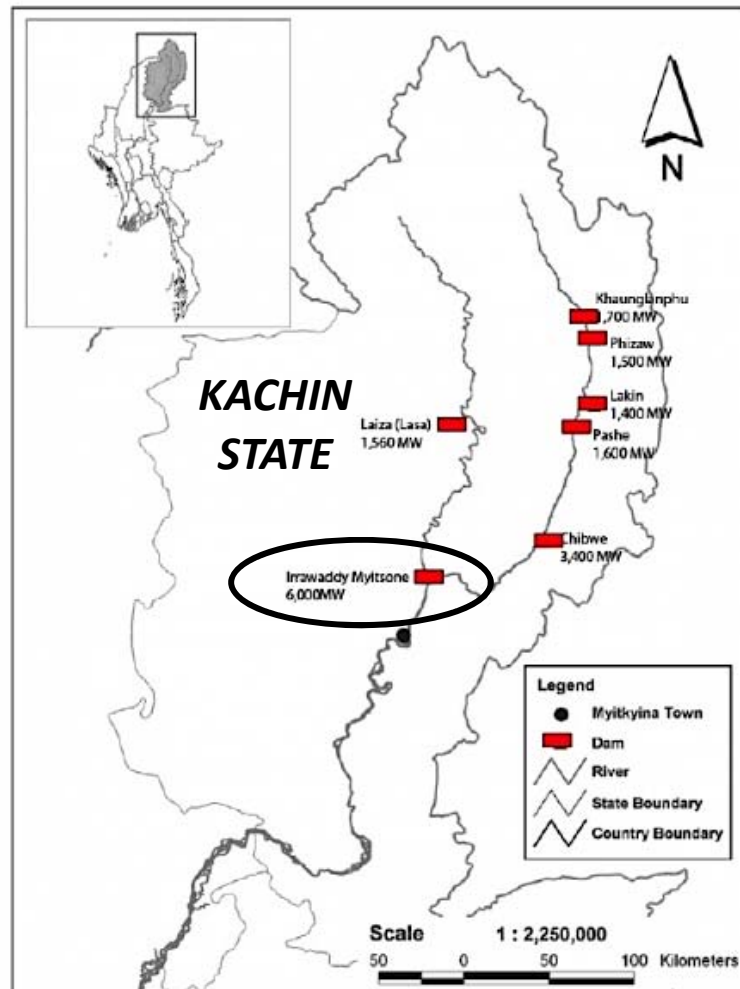
Resource 12 for Question 4

Distribution of existing and planned hydropower plants in Myanmar



Resource 13 for Question 4

Information on the Myitsone mega-dam project

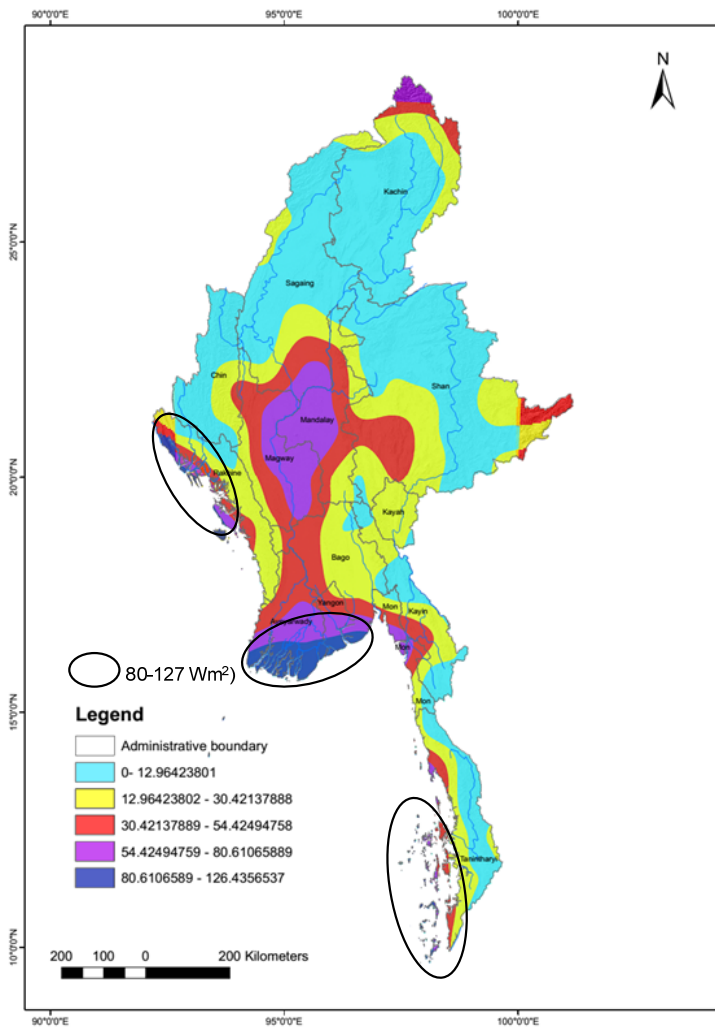


Insert : Myitsone Dam

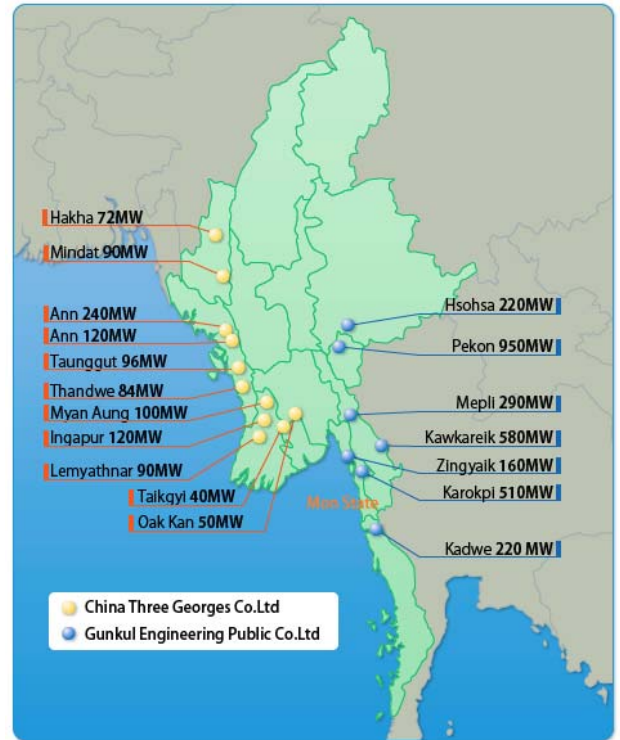
- The Myitsone Dam project (circled in Resource 13) was a major project funded by China Power Investment.
- The mega dam project was intended to be built a mile below the confluence of the Mali and N'Mai rivers in Kachin State, the source of the Irrawaddy River. Kachin State has been the site of political conflicts between various minority groups and the military government.
- There are significant historical and cultural sites at the Mali and N'mai Hka rivers. The dam is located in a region that is recognized as one of the world's top biodiversity hotspots. The region is also tectonically active.
- The mega-dam project once completed, would have exported 90% of its electricity to China.

Resource 14 for Question 4

Wind Power in Myanmar

Wind Power Potential (W/m^2)

Proposed wind sites



End of Insert

BLANK PAGE