



CHIJ ST. THERESA'S CONVENT
PRELIMINARY EXAMINATION 2019
SECONDARY 4 NORMAL (ACADEMIC)

HUMANITIES

2175/2176/2177

Paper 1 Social Studies

19 August 2019

1 hour 45 minutes

Additional Materials: Writing Paper

READ THESE INSTRUCTIONS FIRST

Write all answers on the Writing Paper.

Write in dark blue or black pen.

Do not use paper clips, highlighters, glue or correction fluid.

Section A

Answer **all parts** of Question 1.

Section B

Answer **both parts** of Question 2.

The number of marks is given in brackets [] at the end of each question or part question.

Section A (Source-Based Case Study)

Question 1 is **compulsory** for all candidates.

1 Exploring Citizenship and Governance

Study the Background Information and the sources carefully, and then answer all the questions.

You may use any of the sources to help you answer the questions, in addition to those sources you are told to use. In answering the questions, you should use your knowledge of the topic to help you interpret and evaluate the sources.

(a) Study Source A.

What is the message of this cartoon? Explain your answer, using details of the cartoon. [5]

(b) Study Source B.

Why do you think this infographic was published by the Land Transport Authority of Singapore? Explain your answer. [6]

(c) Study Sources C and D.

How far does Source C agree with Source D? Explain your answer. [7]

(d) Study Source E.

Are you surprised by what Source E says about the use of PMDs? Explain your answer. [7]

(e) How far do the sources in the case study show that the Singapore government is effective in ensuring the safe use of PMDs in Singapore? Explain your answer. [10]

Is the Singapore government effective in ensuring the safe use of PMDs in Singapore?

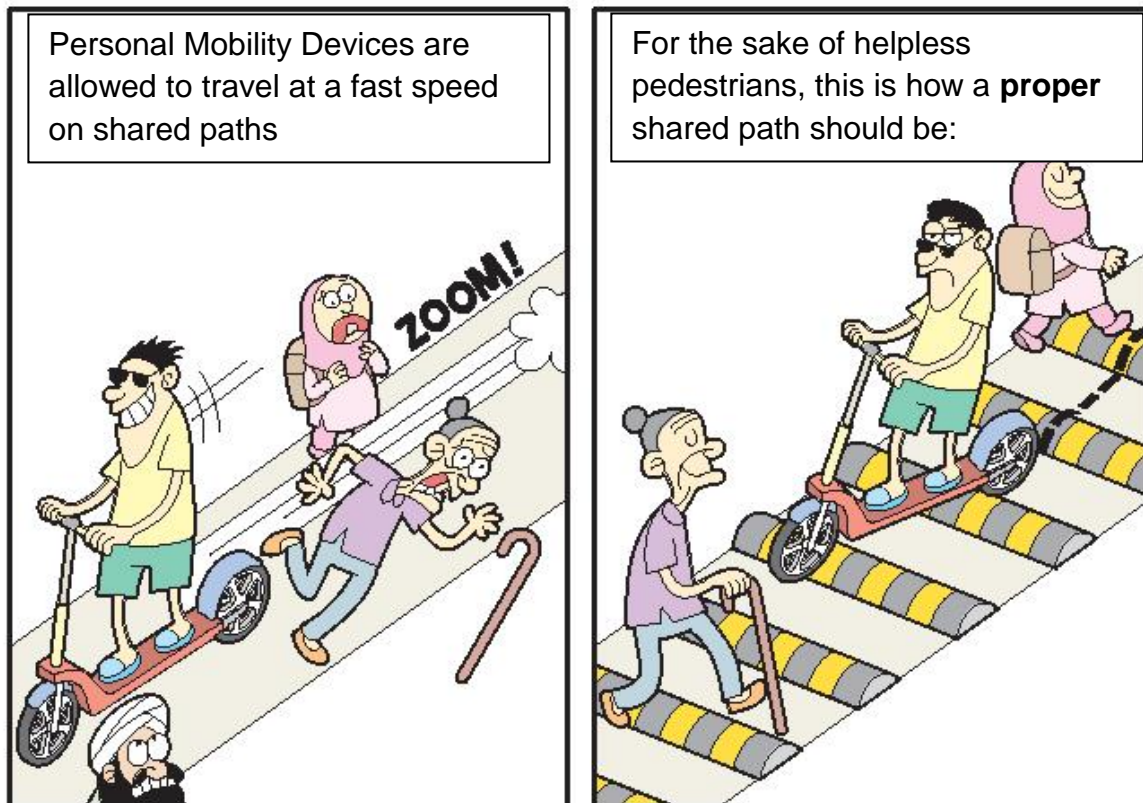
BACKGROUND INFORMATION

Read this carefully. It may help you to answer some of the questions.

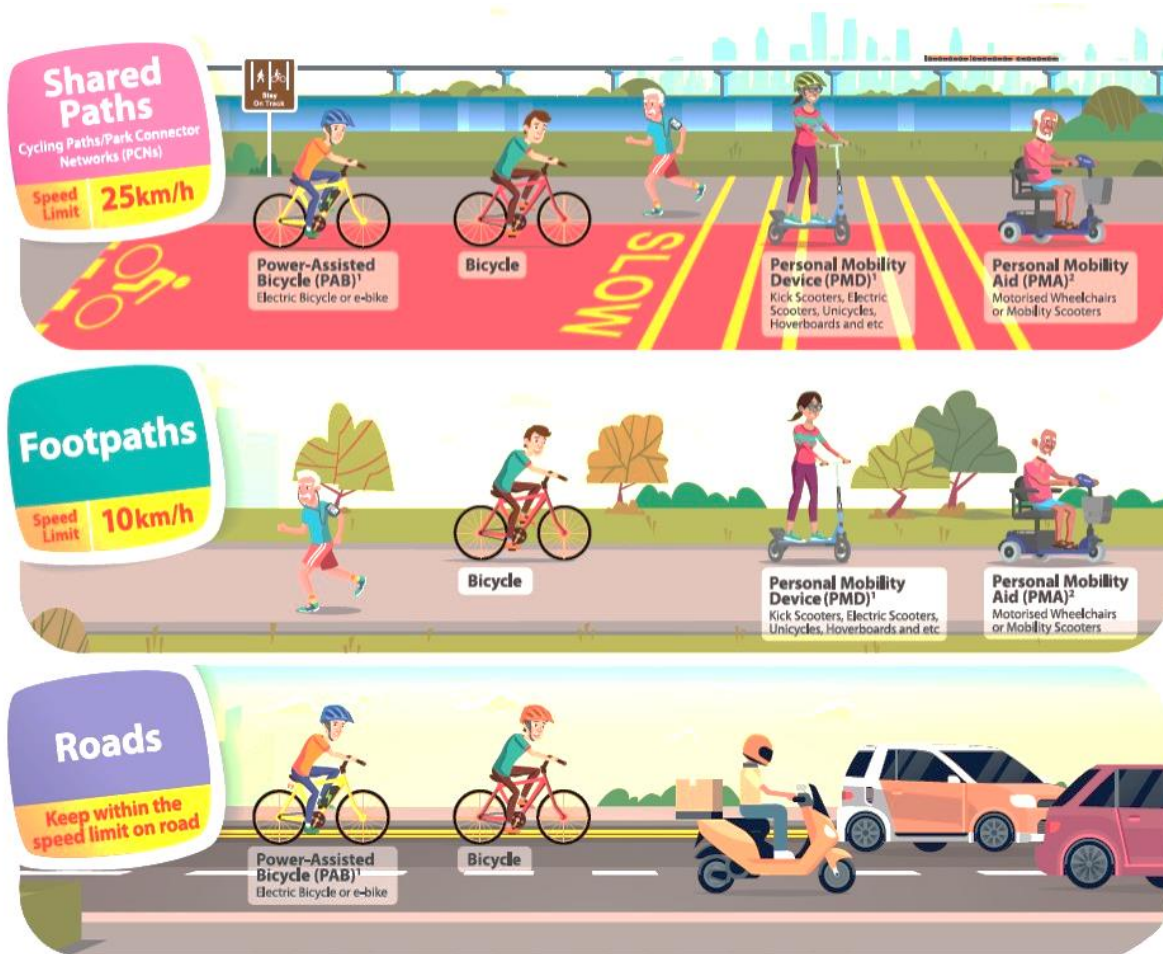
Personal Mobility Devices (PMDs) have recently been growing in popularity in Singapore. These devices can be especially helpful to those who have reduced mobility or who simply appreciate the added convenience of having an option of another mode of transport. Under the law, PMDs can only be used on footpaths and shared paths (shared paths are also known as cycling paths). PMDs are not allowed on roads. Recently, it has been observed that there are multiple incidents of pedestrians colliding with PMD riders on shared paths. This has sparked discussions regarding the use of PMDs and the safety of pedestrians.

Study the following sources to find out whether the Singapore government has been successful in ensuring the safe use of PMDs in Singapore.

Source A: *An edited cartoon on Personal Mobility Devices (PMDs) that was published in The Straits Times on 17 May 2019.*



Source B: *An infographic by the Land Transport Authority of Singapore on the safe use of the different paths in Singapore, published on 1 July 2019.*



Source C: *An extract adapted from a speech given by Ms Josephine Teo, Senior Minister of State for Transport on the use of PMDs in Singapore, published on 10 January 2017.*

Cycling and the use of PMDs are vital in Singapore's quest to go car-lite and provide an alternative to public transport. Cycling and the use of PMDs are gaining popularity with Singaporeans young and old, which indicates a positive development, as active mobility is a key pillar of our vision for transport in Singapore. These modes of transport are green, convenient and efficient for short distances. The law legalises the use of bicycles and PMDs on shared paths, where pedestrians and riders will be safe to travel and not worry about having to struggle with traffic.

Source D: *An extract adapted from The Business Times in Singapore on the use of PMDs in Singapore, published on April 2015.*

NOT a fan of driving in peak-hour traffic or being stuck in the Mass Rapid Transit (MRT) with other unhappy commuters? Personal Mobility Devices (PMDs) such as electric scooters have been growing in popularity since their introduction in Singapore about two years ago. Users of these electric scooters believe that this mode of transport is beneficial because it is convenient, environment-friendly and cost-effective for short distance travelling.

PMD users like Mr Einhaus agree that there is a strong need to re-evaluate current laws. He mentioned: "The current laws were written before electric scooters were even around. Accidents do happen to any of us along the path. More can be done to help ensure the safety of everyone."

Source E: *An extract adapted from an interview conducted about the dangers arising from the use of PMDs in Singapore, published in The Straits Times on 4 January 2018.*

In the first half of the year, there were 90 accidents involving electric bicycles and PMDs which resulted in four deaths and about 90 injuries. These figures indicate an extremely high chance of injury in accidents involving PMDs.

The crux of the matter: the necessary infrastructure was not in place before PMDs were popularised. Not only are walkways impossibly narrow in some places, they are also not always well paved, with many stretches pitted, broken and blocked - by trees, lamp posts, electrical boxes or curbs. Cycling paths are also not always well-lit or seamless. In promoting active mobility, proper infrastructure must be the starting point. Without it, we will be asking people to make an unreasonably big compromise on safety.

SECTION B (Structured-Response Question)

Question 2 is **compulsory** for all candidates.

2 Living in a Globalised World

Study the extracts carefully, and then answer the questions.

Extract 1

In 2017, the Singapore financial performance rankings for multinational corporations (MNCs) and small and medium enterprises (SMEs) unveiled that the gap between MNCs and SMEs continues to widen. MNCs' profits show solid growth while profits for SMEs tumbled.

Extract 2

There are many MNCs all over the world. These companies set up branches in different countries to develop and expand their operations in other developing markets in Asia. This has in turn helped the economies of these countries to grow.

Extract 3

In an interconnected and interdependent global economy, when one country faces an economic crisis, it may adversely affect the economies of other countries.

(a) Extract 1 shows how the SMEs are facing strong competition from MNCs. This has affected the profit margins of many SMEs.

In your opinion, how do you think SMEs can increase their profits in view of the competition from MNCs? Explain your answer using one recommendation. [7]

(b) Extracts 2 and 3 describe the positive and negative economic impacts of globalisation on countries.

Explain how globalisation can impact the economy of a country in a positive and negative way. [8]

End of Paper

Copyright Acknowledgements

Background Information: <https://singaporelegaladvice.com/law-articles/e-scooter-laws-singapore>

Source A: <http://chewonitcomics.blogspot.com/>

Source B: <https://www.lta.gov.sg/content/ltaweb/en/walk-cycle-ride/rules-and-code-of-conduct.html>

Source C: <https://www.straitstimes.com/singapore/parliament-cycling-and-personal-mobility-devices-essential-to-countrys-car-lite-drive-says>

Source D: <https://www.businesstimes.com.sg/lifestyle/motoring/scooting-with-the-times>

Source E: <https://www.straitstimes.com/singapore/transport/when-wheels-and-walkers-collide>

Extract 1: <https://www.straitstimes.com/business/big-firms-pull-further-ahead-of-smes>