



NANYANG JUNIOR COLLEGE

Year 1 End-of-Year Examination

H1 GEOGRAPHY

8834/01

25 Sept 2023

INSERT

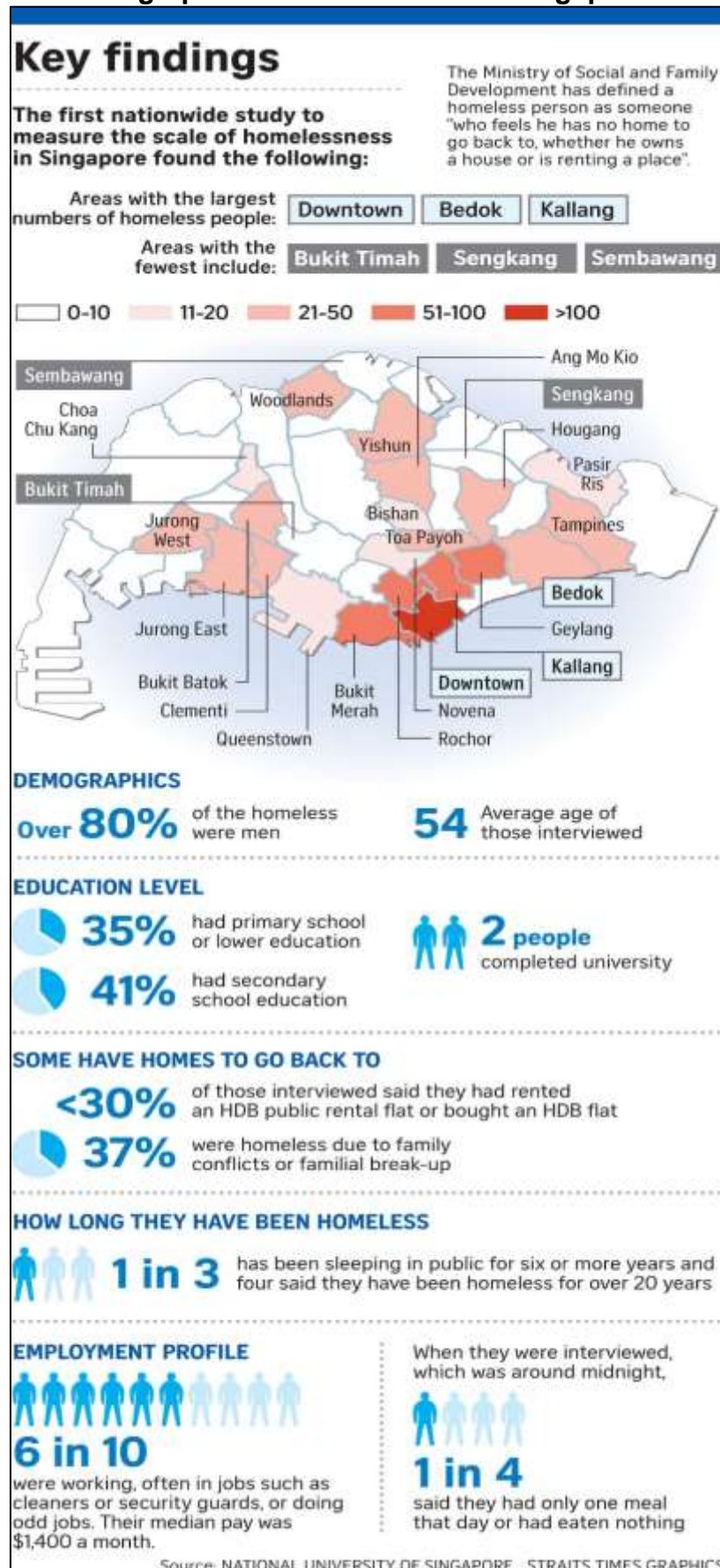
2 hours

READ THESE INSTRUCTIONS FIRST

This Insert contains all the Resources referred to in the questions.

Resource 1 for Question 1

Infographic on the homeless in Singapore



Resource 2A for Question 1

Questionnaire survey (English version) used by the students in their investigation

Age: _____

Gender: _____

Approximate Income level: _____

	Strongly Agree	Agree	Neutral	Disagree	Strongly Disagree
1) I stay out here because I have no choice					
2) I prefer to stay out here than stay with someone I don't know					
3) I think the government has provided enough housing for Singaporeans					
4) I do not have a steady income to pay for monthly rental					

[Turn over

Resource 2B for Question 1

Results of the questionnaire survey done on 24 elderly persons

Age:

- 49 and below: 2
- 50-60: 12
- 60 and above: 6
- **No data:** 4

Gender:

- Male: 20
- Female: 4

Approximate Income level:

- Below \$800 a month: 7
- \$800-1200 a month: 3
- **No data:** 14

	Strongly Agree	Agree	Neutral	Disagree	Strongly Disagree	No data
1) I stay out here because I have no choice	6	14	0	1	0	3
2) I prefer to stay out here than stay with someone I don't know	2	10	1	6	2	3
3) I think the government has provided enough housing for Singaporeans	0	2	2	12	0	8
4) I do not have a steady income to pay for monthly rental	6	15	1	1	0	1

Resource 3 for Question 1

How the Singapore government is helping the elderly population in terms of housing



[Turn over

Resource 4 for Question 2**Before and After Photos facing Third Street SE and the Yards Park, Washington DC**

Aug 6 2005



Sep 11 2011



May 19 2019



Source: <http://www.idland.com/dc/photobrowse-all.cfm?int=3owater&toward=00>

Resource 5 for Question 2

Selected census data of residents living in Capitol Riverfront

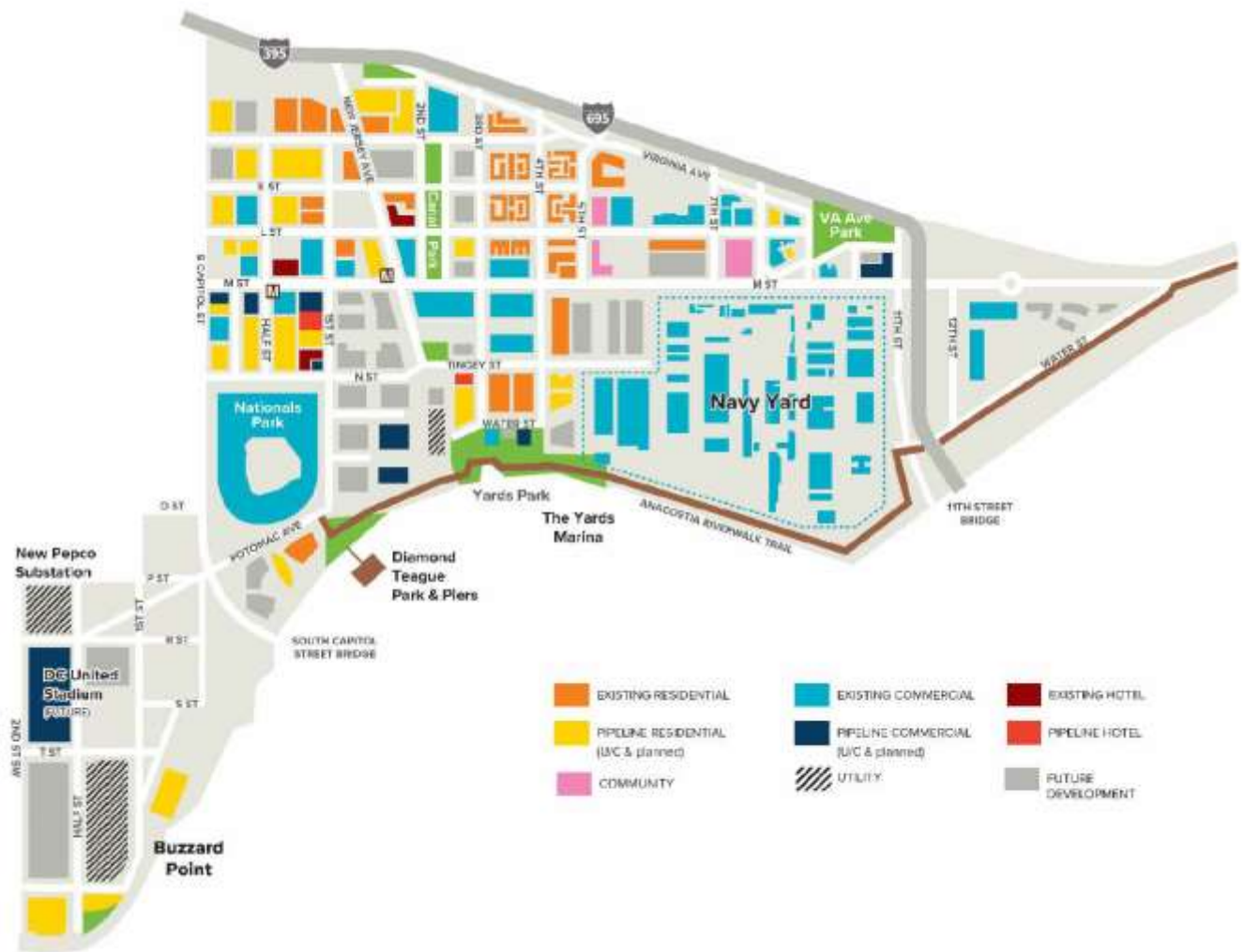
	2000	2017
Age		
Under 18	18.4%	10.4%
18-34	23.5%	40.8%
35-64	43.8%	35.1%
65 and over	14.3%	13.6%
Race Composition		
White	24.4%	51.7%
Black	67.6%	39.5%
Native American	0.3%	0.5%
Asian/Pacific Islander	2.0%	3.9%
Other	2.2%	0.8%
Multi-Racial	3.7%	3.6%

Source: https://planning.dc.gov/sites/default/files/dc/sites/op/publication/attachments/19_AW.pdf

[Turn over

Resource 6 for Question 2

Land-use Function Map of Capitol Riverfront Development, 2017



Note:

1. Nationals Park is a baseball stadium.
2. The Navy Yard is currently a ceremonial and administrative center for the U.S. Navy, home to the Chief of Naval Operations, and other more classified facilities.

Source: Chesapeake Bay & Water Resources Policy Committee, 2017

Resource 7 for Question 2**Goals for the environment set out by the Anacostia Waterfront Initiative (AWI)**

Source: 2018 Anacostia Waterfront 15 Year Progress Report

End of Paper