

INNOVA JUNIOR COLLEGE
JC2 PRELIMINARY EXAMINATIONS
in preparation for General Certificate of Education Advanced Level
Higher 2

GEOGRAPHY

9751/02

Paper 2 Data Response Questions

12 Sept 2018

INSERT

3 hours

READ THESE INSTRUCTIONS FIRST

This Insert contains all the Resources referred to in this questions.

INSERT

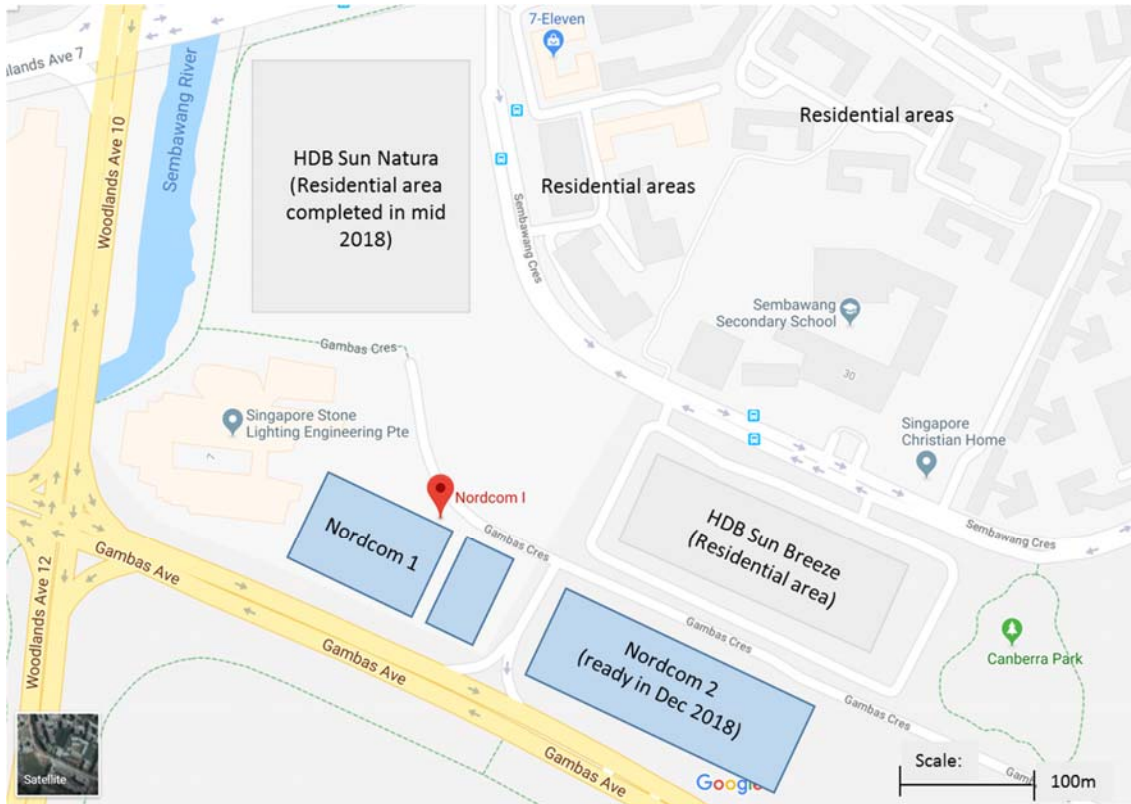
This document consists of **14** printed pages



Innova Junior College

9751/02/IJC/SEP18

[Turn over

Resource 1 for Question 1**Map of surrounding area of Nordcom 1 and Nordcom 2**

Source: Adapted from Google Maps

Resource 2 for Question 1

Profile of Nordcom 1 and Nordcom 2

Nordcom 1

Strategically positioned between Woodlands Regional Centre and Seletar Regional Centre, Nordcom 1 is set to benefit from the Urban Redevelopment Authority's (URA) Master Plan 2014 for Regional Centres to serve as vibrant liveable hubs for business and recreation.

Expect enhanced infrastructure following the growth of the North Region into a conduit for increased economic and human activity.

Synthesize the business capabilities of the modern factory and sleek character of modern office-like spaces – Nordcom 1 offers 130 factory spaces, with a unique product mix of ramp-up, flatted and 3-storey units. Unit sizes are from 1,658 to 6,039 sq ft, with high floor-to-floor heights of up to 6m. Loading & unloading access is also catered for 40-foot trucks.

Nordcom 2

Tap on Nordcom 2's excellent locational advantages with its strategic location and enhanced connectivity to Sembawang and Admiralty MRT stations, major expressways and the upcoming North-South Corridor.

Welcome guests and clients alike to a space you're proud of. These B1-type units* support clean & light industries, and can be used for office-like operations such as design and development, as well as manufacturing, assembly and associated storage. Choose from ramp-up, flatted and 3-storey factory units with sizes from 1,636 sq ft to 5,888 sq ft. All 347 ensuite units are built to suit your requirements and designed with natural lighting and ventilation in mind.

The B1 industrial development is ready for immediate occupation.

* B1-type units are areas used or intended to be used for industry, warehouse, utilities and telecommunication uses for which the relevant authority does not impose a nuisance buffer (i.e. distance between industry and residential areas) greater than 50m.

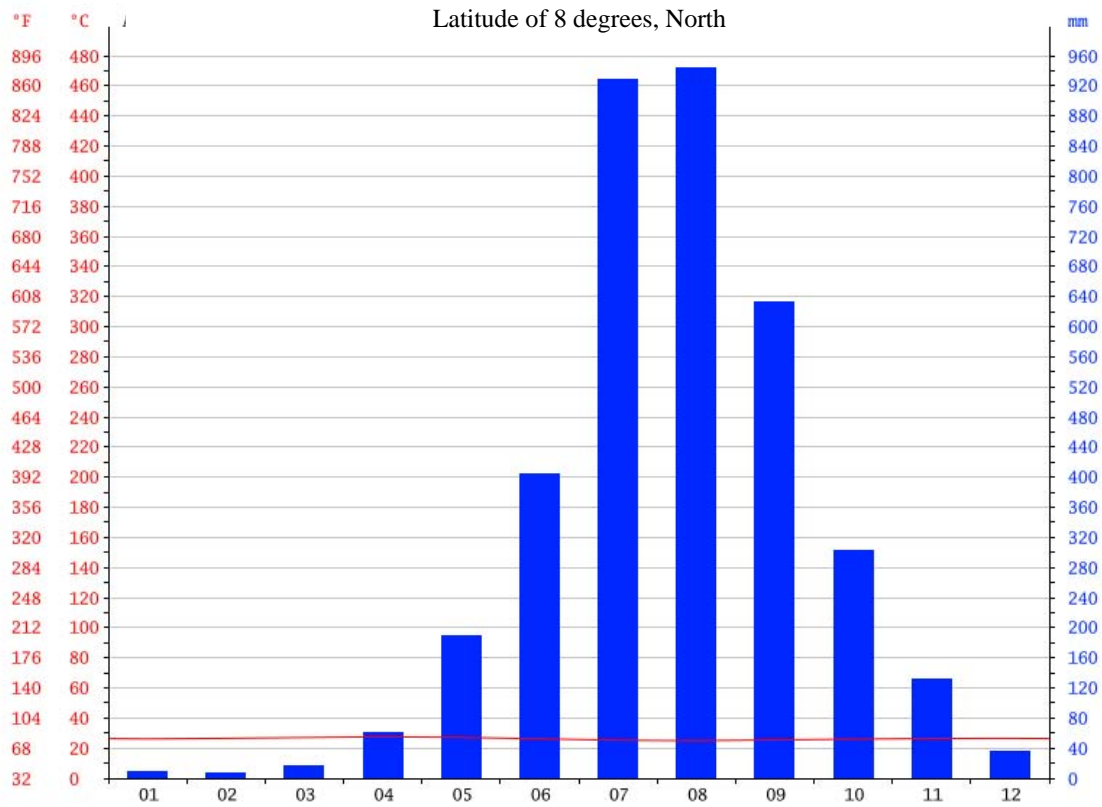
Source: Far East Organisation website for Nordcom 1 and 2

Resource 3 for Question 1

Collated results from survey conducted with 50 residents at HDB Sun Breeze and HDB Sun Natura

No	Question	To a large extent	To some extent	No impact
1	To what extent has the setting up of Nordcom 1 and 2 made an impact to your life?	5	20	25
		Positive	Neutral	Negative
2	Has the impact been largely positive or negative?	12	30	13
		Yes	No	Not Sure
3	Has the presence of Nordcom 1 and 2 brought more income to the area?	1	4	45
		Yes	No	Not Sure
4	Are you affected by the noise or pollution generated from Nordcom 1 or 2?	7	25	18

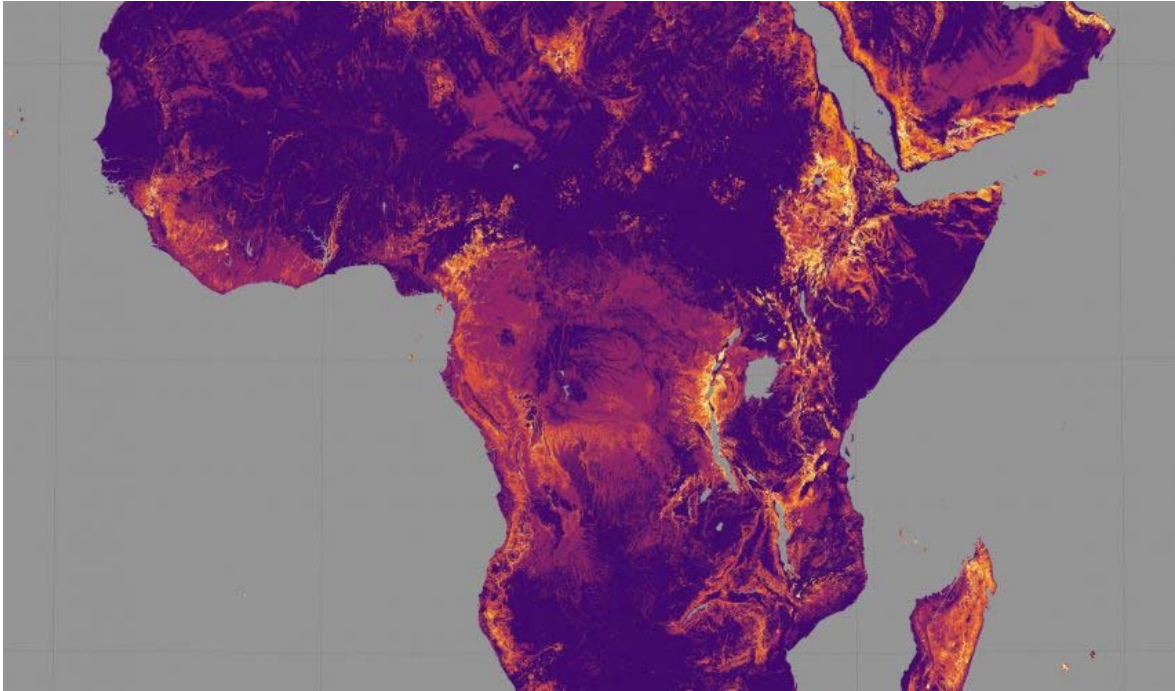
Resource 4 for Question 2
Climate graph of Freetown, Sierra Leone



Source : <https://en.climate-data.org/location/526/>

Resource 5 for Question 2**Mass movements across the African Continent**

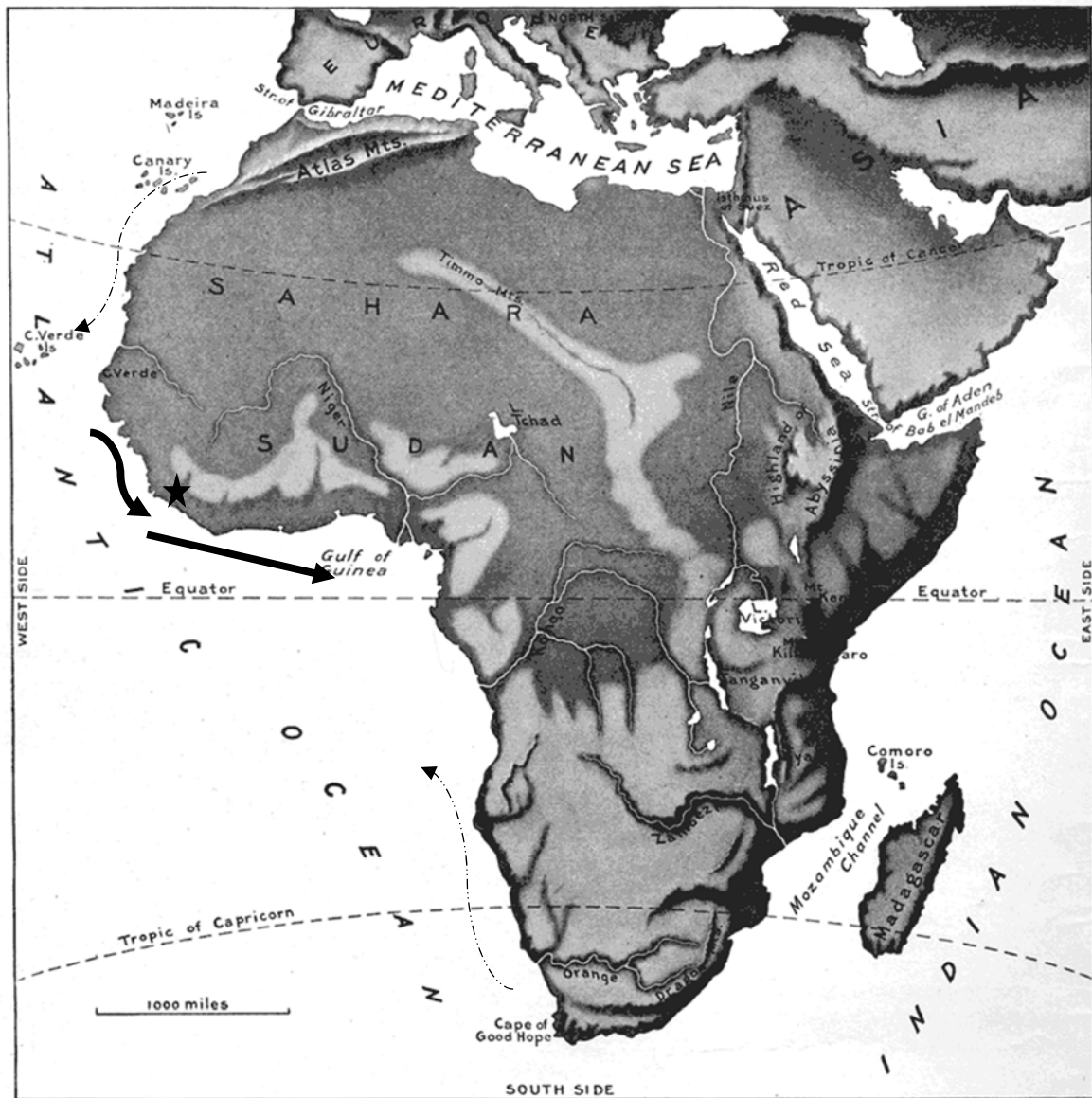
The areas shaded in purple experience a “slight” mass movement potential, red and orange areas experience “moderate” potential, and yellow areas experience “severe” potential.



Source : <https://www.earth.com/image/dangerous-massmovements-africa/>




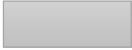
Resource 6 for Question 2

Location of Mass Movement that occurred in Sierra Leone



AFRICA. (Same scale as maps of North America, South America, Eurasia, and Australia.)

Legend

-  Warm Ocean Current
-  Cold Ocean Current
-  Sierra Leone
-  Steeper Regions in the African Continent

Resource 7 for Question 2
Mass Movement in Sierra Leone, 2017

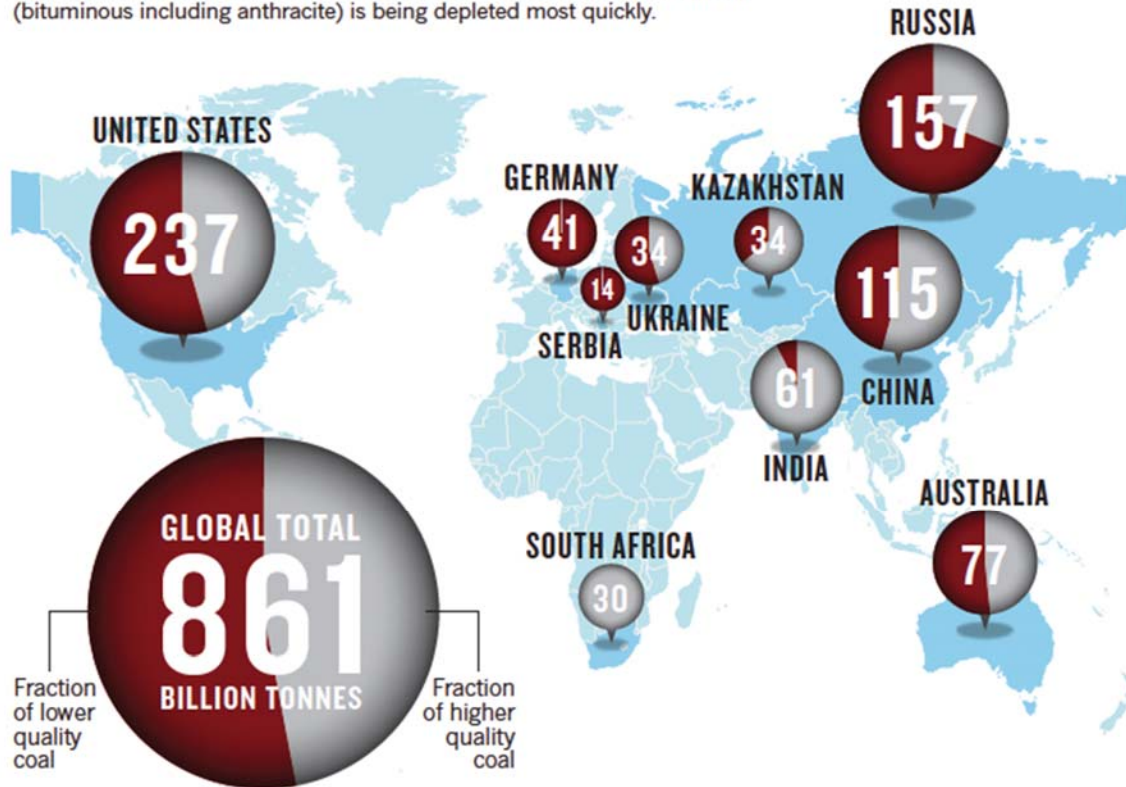


Source : CNN news, Freetown, Sierra Leone

Resource 8 for Question 3

World Distribution of Coal Resources

Proven recoverable coal reserves reported to the World Energy Council by the top-ten coal-producing countries at the end of 2008. Coal of higher quality (bituminous including anthracite) is being depleted most quickly.

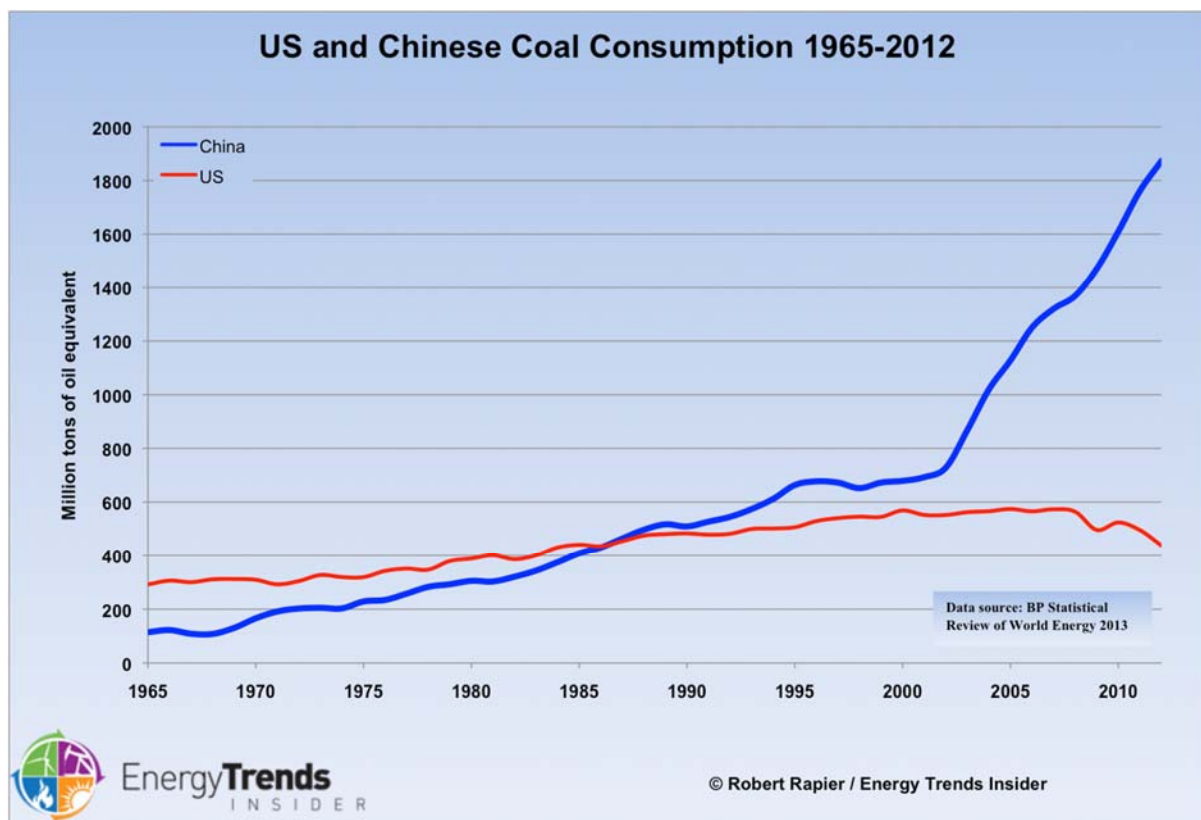


Source : World Energy Council

Resource 9 for Question 3

9A : Coal Production in Million Tons between 1960 and 2010 in the US and China

Year	Coal Production(US)	Coal Production (China)
1960	410	500
1970	600	480
1980	800	600
1990	1100	1000
2000	1050	1100
2010	1050	3000

9B : Coal Consumption between US and China between 1965 to 2012

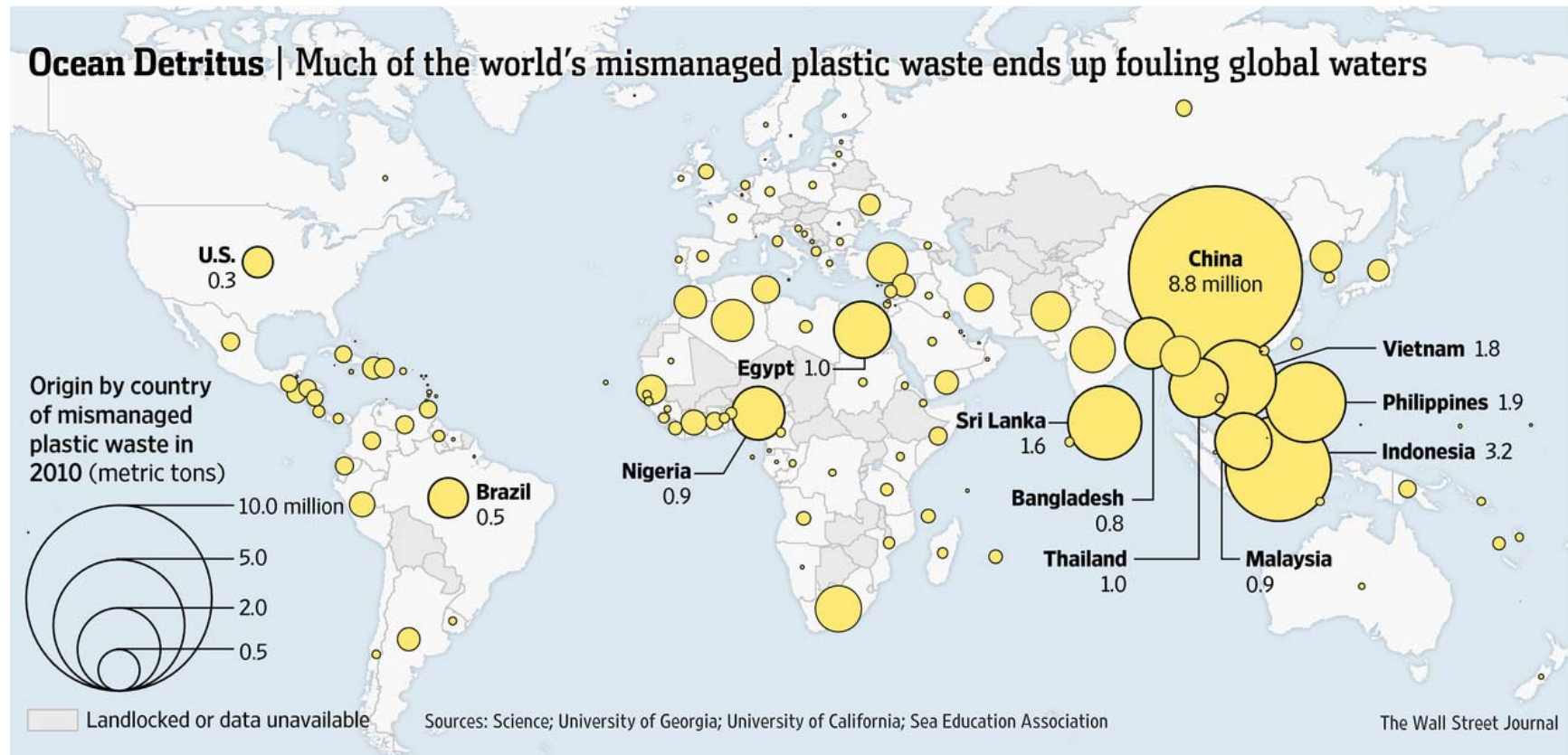
Resource 10 for Question 3

Degradation caused by coal mining in China



Resource 11 for Question 4

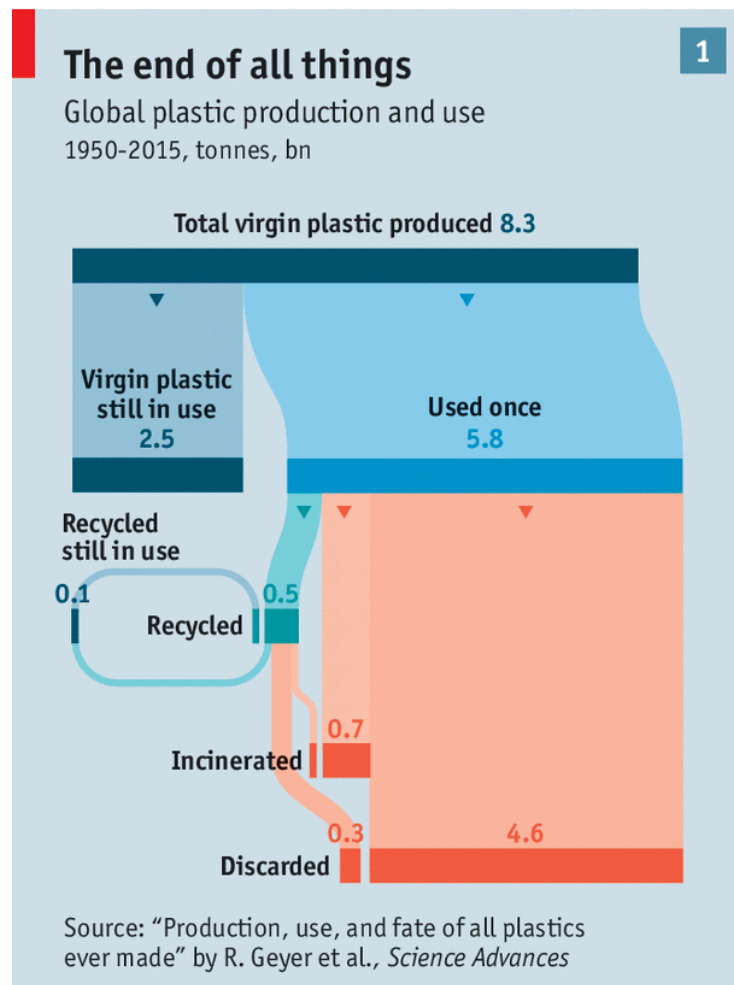
Map showing sources of world's mismanaged plastic waste*



*Mismanaged waste means the material is littered or not properly disposed of. This can usually be attributed shortcomings in the waste management system.

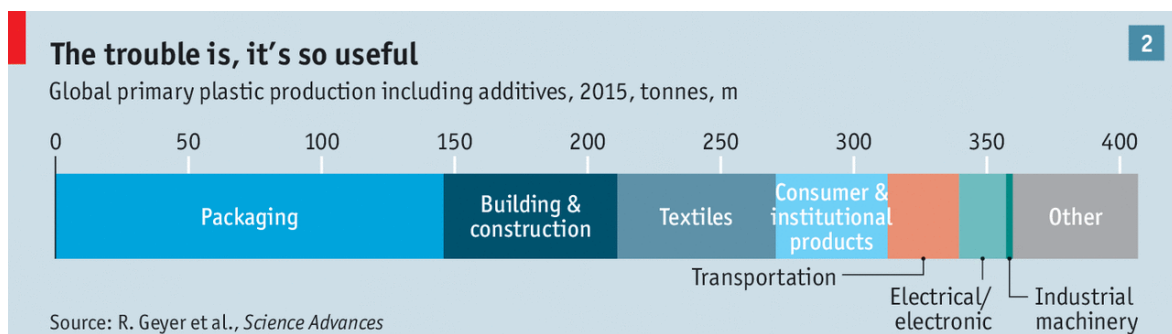
Resource 12 for Question 4

Global plastic production and use



Economist.com

How plastic is used globally



Economist.com

Resource 13 for Question 4**News Article on Starbucks' plan to eliminate plastic straws****Starbucks to eliminate plastic straws in stores globally by 2020**

SEATTLE: By 2020, consumers will no longer be able to get single-use plastic straws at all Starbucks stores globally. This would apply to its more than 28,000 company operated and licensed stores, the coffee giant announced on Monday (Jul 9).

Starbucks said it will make available strawless lids or straws made of other materials instead.

"Starbucks has designed, developed and manufactured a strawless lid, which will become the standard for all iced coffee, tea and espresso beverages," the company said in a news release. "The lid is currently available in more than 8,000 stores in the United States and Canada for select beverages including Starbucks Draft Nitro and Cold Foam." In Asia, the lid is being piloted for Nitro beverages in markets such as China, Japan, Singapore, Thailand and Vietnam.

For customers who prefer to have or need a straw, Starbucks said straws made of paper or compostable plastic will be available upon request - for their Frappuccino blended beverages.

Source: Channel News Asia